

Chart 193

Name	M	Const.	Mag.	Type	Size	R.A.	Decl.	C	R	S	O	# Stars	B
<b>Common</b>					<b>Notes</b>								
NGC 210		CET	10.9	GAL	4.6m x 3.2m	0h 40.6m	-13° 52.0'						
					B,pS,R,psbM,r,* 11 p 2' - H II 452;F outer arms form encircling ring								
NGC 246		CET	8.5	PN	240s x 210s	0h 47.1m	-11° 52.0'	C56	R15	S23	O		
					H V 25;PK118-74.1;Galaxy NGC 255 15' NNE								
NGC 247		CET	9.1	GAL	21m x 5.6m	0h 47.1m	-20° 46.0'	C62			O		
					F,eL,vmE 172 degrees - H V 20								
NGC 253		SCL	7.2	GAL	26.4m x 6m	0h 47.6m	-25° 18.0'	C65	R13	S86	O		B
					!!vvB,vvL,vmE 54 degrees.gbM - H V 1;Sandage-arms are more defined by dust than *								
NGC 578		CET	10.9	GAL	4.8m x 3m	1h 30.5m	-22° 40.0'						
					B,L,pmE,gpmbM								
NGC 584		CET	10.5	GAL	3.3m x 1.9m	1h 31.3m	-6° 52.0'				O		
					vB,pL,R,mbM,p of 2								
NGC 596		CET	10.9	GAL	2.8m x 2.1m	1h 32.9m	-7° 02.0'						
					pB,R,bM,r,*6f12' - H II 4								
NGC 720		CET	10.2	GAL	4.4m x 2.2m	1h 53.0m	-13° 44.0'						
					cB,pL,IE,psmbM - H I 105								

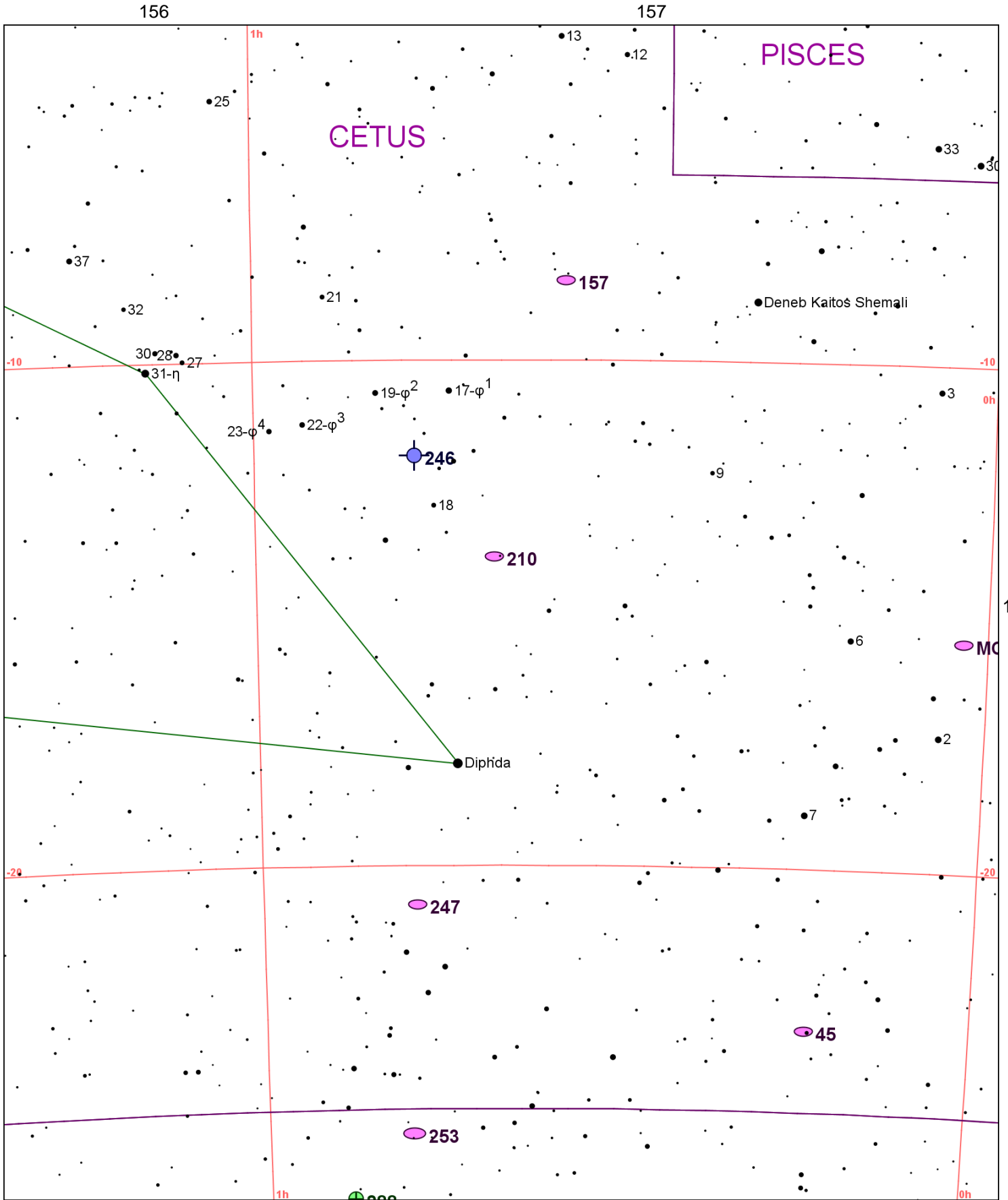


Chart 194													
Name	M	Const.	Mag.	Type	Size	R.A.	Decl.	C	R	S	O	# Stars	B
<b>Common</b>					<b>Notes</b>								
MCG -03-01-015		CET	10.6	GAL	11m x 4m	0h 02.0m	-15° 27.0'						
Appr. 50/50 Face & Edge On; Local Group; Low Surf Br													
NGC 45		CET	10.6	GAL	7.6m x 5.4m	0h 14.1m	-23° 11.0'						
eF,L,vgvlbM,L*cont f - Loose struct;Spiral pattern dim													
NGC 157		CET	10.4	GAL	4.1m x 2.7m	0h 34.8m	-8° 24.0'						
pB,L,E,bet 2 cB st - H II 3													
NGC 210		CET	10.9	GAL	4.6m x 3.2m	0h 40.6m	-13° 52.0'						
B,pS,R,psbM,r,* 11 p 2' - H II 452;F outer arms form encircling ring													
NGC 246		CET	8.5	PN	240s x 210s	0h 47.1m	-11° 52.0'	C56	R15	S23	O		
H V 25;PK118-74.1;Galaxy NGC 255 15' NNE													
NGC 247		CET	9.1	GAL	21m x 5.6m	0h 47.1m	-20° 46.0'	C62			O		
F,eL,vmE 172 degrees - H V 20													
NGC 253		SCL	7.2	GAL	26.4m x 6m	0h 47.6m	-25° 18.0'	C65	R13	S86	O		B
!!vvB,vvL,vmE 54 degrees,gbM - H V 1;Sandage-arms are more defined by dust than *													
NGC 288		SCL	8.1	GC	13.8m	0h 52.8m	-26° 35.0'				O		
B,L,IE,st 12...16 - H VI 20;loose structured globular													

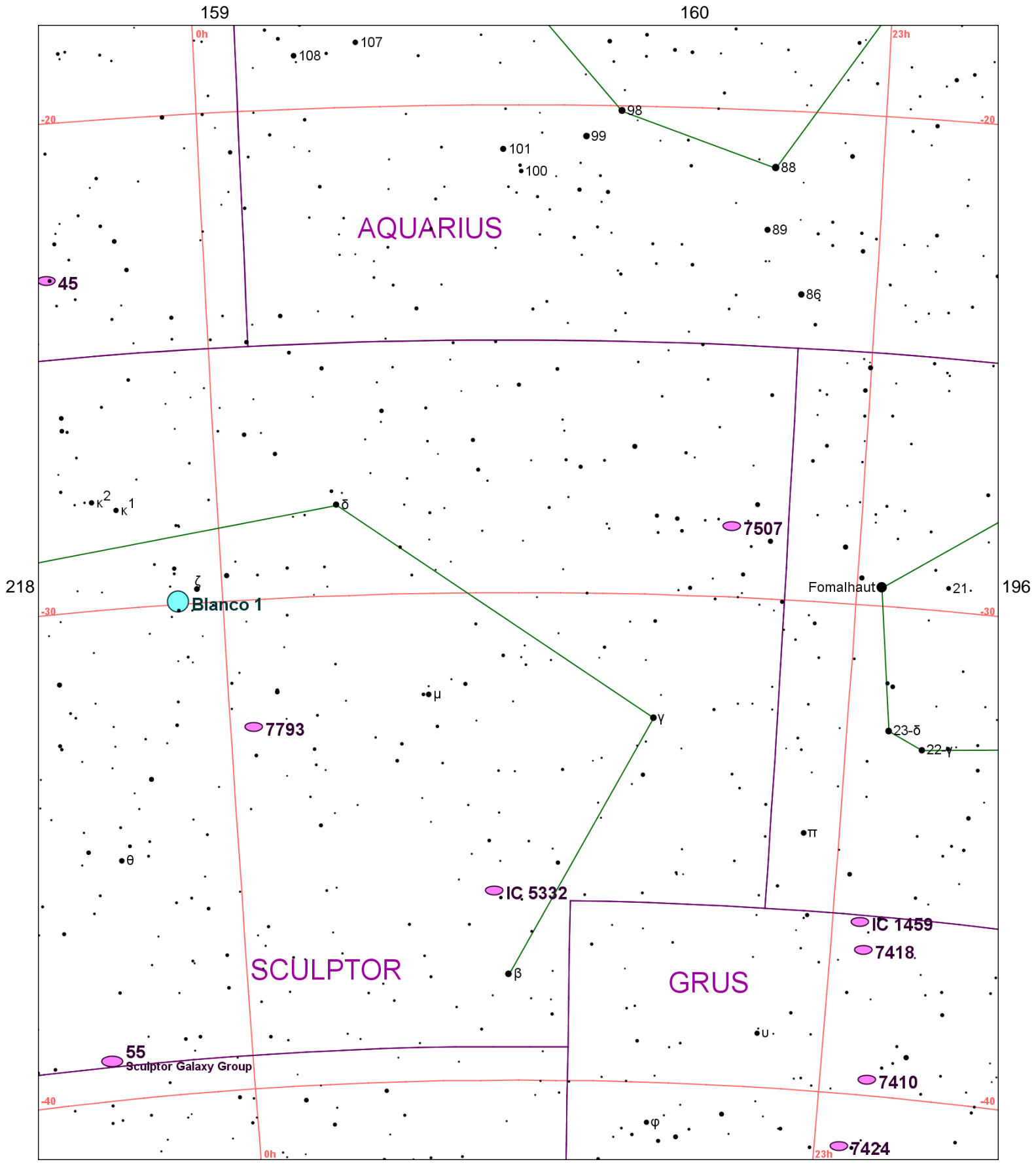


Chart 195													
Name	M	Const.	Mag.	Type	Size	R.A.	Decl.	C	R	S	O	# Stars	B
<b>Common</b>					<b>Notes</b>								
Blanco 1		SCL	4.5	OC	90m	0h 04.3m	-29° 56.0'					30	
					Zeta Sculptoris cluster								
IC 1459		GRU	10.0	GAL	5.1m x 3.7m	22h 57.2m	-36° 28.0'				O		
					F,pS,com,N=12 m								
IC 5332		SCL	10.5	GAL	8.4m x 7.6m	23h 34.5m	-36° 06.0'						
					eF,vL,bM,bet 2 *,D* p 45 deg								
NGC 45		CET	10.6	GAL	7.6m x 5.4m	0h 14.1m	-23° 11.0'						
					eF,L,vqvlbM,L*cont f - Loose struct;Spiral pattern dim								
NGC 55		SCL	7.9	GAL	31.2m x 5.9m	0h 14.9m	-39° 11.0'	C72			O		
Sculptor Galaxy Group					vB,vL,vmE,triN								
NGC 7410		GRU	10.3	GAL	5.5m x 1.5m	22h 55.0m	-39° 40.0'				O		
					cB,L,vmE43,mbM - Nearly edge-on								
NGC 7418		GRU	10.9	GAL	3.8m x 2.7m	22h 56.6m	-37° 02.0'						
					cB,vL,vIE,vglbM								
NGC 7424		GRU	10.5	GAL	10m x 8.2m	22h 57.3m	-41° 04.0'						
					F,cL,vIE,vgmbM								
NGC 7507		SCL	10.4	GAL	2.8m x 2.7m	23h 12.1m	-28° 32.0'				O		
					pB,cS,R,psvmbM,*10 np - H II 2								
NGC 7793		SCL	9.1	GAL	9.6m x 6.4m	23h 57.8m	-32° 36.0'				O		
					Like a comet (1850)								

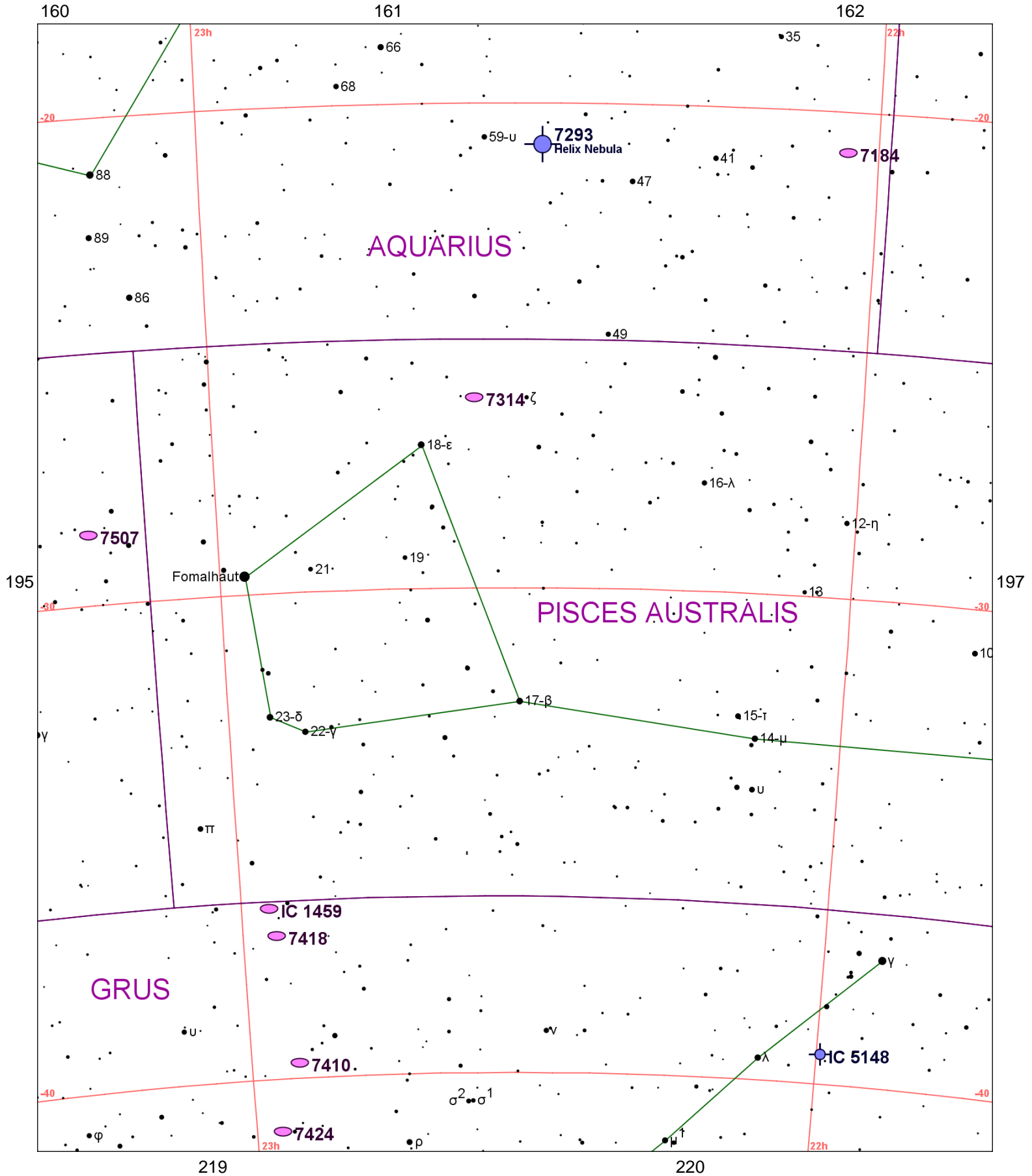
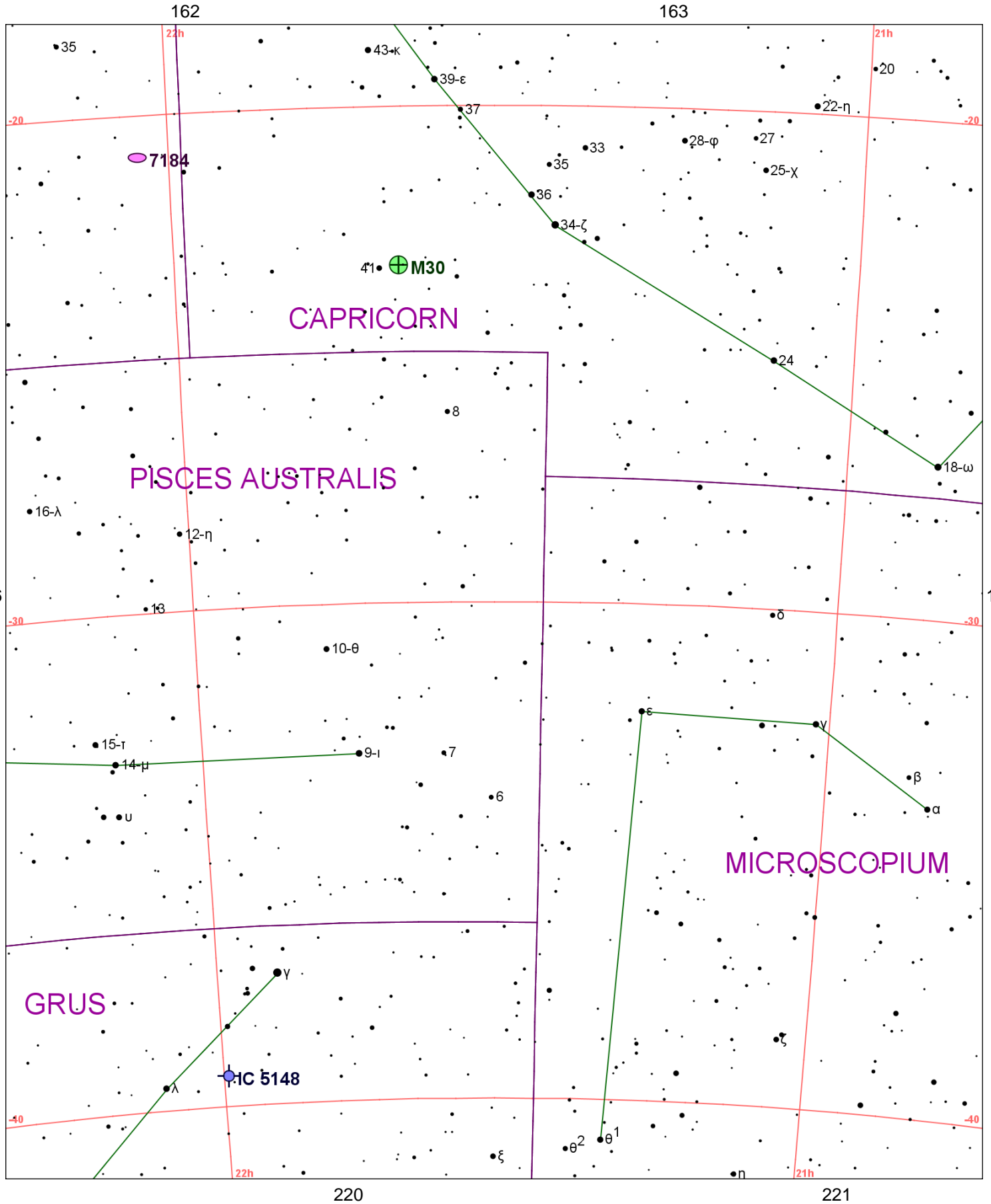


Chart 196													
Name	M	Const.	Mag.	Type	Size	R.A.	Decl.	C	R	S	O	# Stars	B
<b>Common</b>					<b>Notes</b>								
IC 1459		GRU	10.0	GAL	5.1m x 3.7m	22h 57.2m	-36° 28.0'				O		
					F,pS,com,N=12 m								
IC 5148		GRU	11.0	PN	120s	21h 59.6m	-39° 23.0'						
					pB,L,IE,* att,annular - Also IC 5149 and IC 5150;called IC 5150 in Hartung								
NGC 7184		AQR	10.9	GAL	5.9m x 1.3m	22h 02.7m	-20° 49.0'				O		
					pB,pL,mE64,bet 3*,er - H II 1;With Saturn-like inner ring								
NGC 7293		AQR	6.3	PN	960s x 720s	22h 29.6m	-20° 50.0'	C63	R2	S5	O		
Helix Nebula					!;pF,vL,E or biN - low surf brightness								
NGC 7314		PSA	11.0	GAL	4.6m x 2m	22h 35.8m	-26° 03.0'						
					cF,L,mE0,vlbM								
NGC 7410		GRU	10.3	GAL	5.5m x 1.5m	22h 55.0m	-39° 40.0'				O		
					cB,L,vmE43,mbM - Nearly edge-on								
NGC 7418		GRU	10.9	GAL	3.8m x 2.7m	22h 56.6m	-37° 02.0'						
					cB,vL,vIE,vglbM								
NGC 7424		GRU	10.5	GAL	10m x 8.2m	22h 57.3m	-41° 04.0'						
					F,cL,vIE,vgmbM								
NGC 7507		SCL	10.4	GAL	2.8m x 2.7m	23h 12.1m	-28° 32.0'				O		
					pB,cS,R,psvmbM,*10 np - H II 2								





**Chart 197**

Name	M	Const.	Mag.	Type	Size	R.A.	Decl.	C	R	S	O	# Stars	B
<b>Common</b>					<b>Notes</b>								
IC 5148		GRU	11.0	PN	120s	21h 59.6m	-39° 23.0'						
					pB,L,IE,* att,annular - Also IC 5149 and IC 5150;called IC 5150 in Hartung								
NGC 7099	M30	CAP	7.5	GC	8.9m	21h 40.4m	-23° 11.0'				O		B
					!,B,L,IE,gpmbM,st 12...16 - Wm. Herschel saw very elliptical shape								
NGC 7184		AQR	10.9	GAL	5.9m x 1.3m	22h 02.7m	-20° 49.0'				O		
					pB,pL,mE64,bet 3*,er - H II 1;With Saturn-like inner ring								

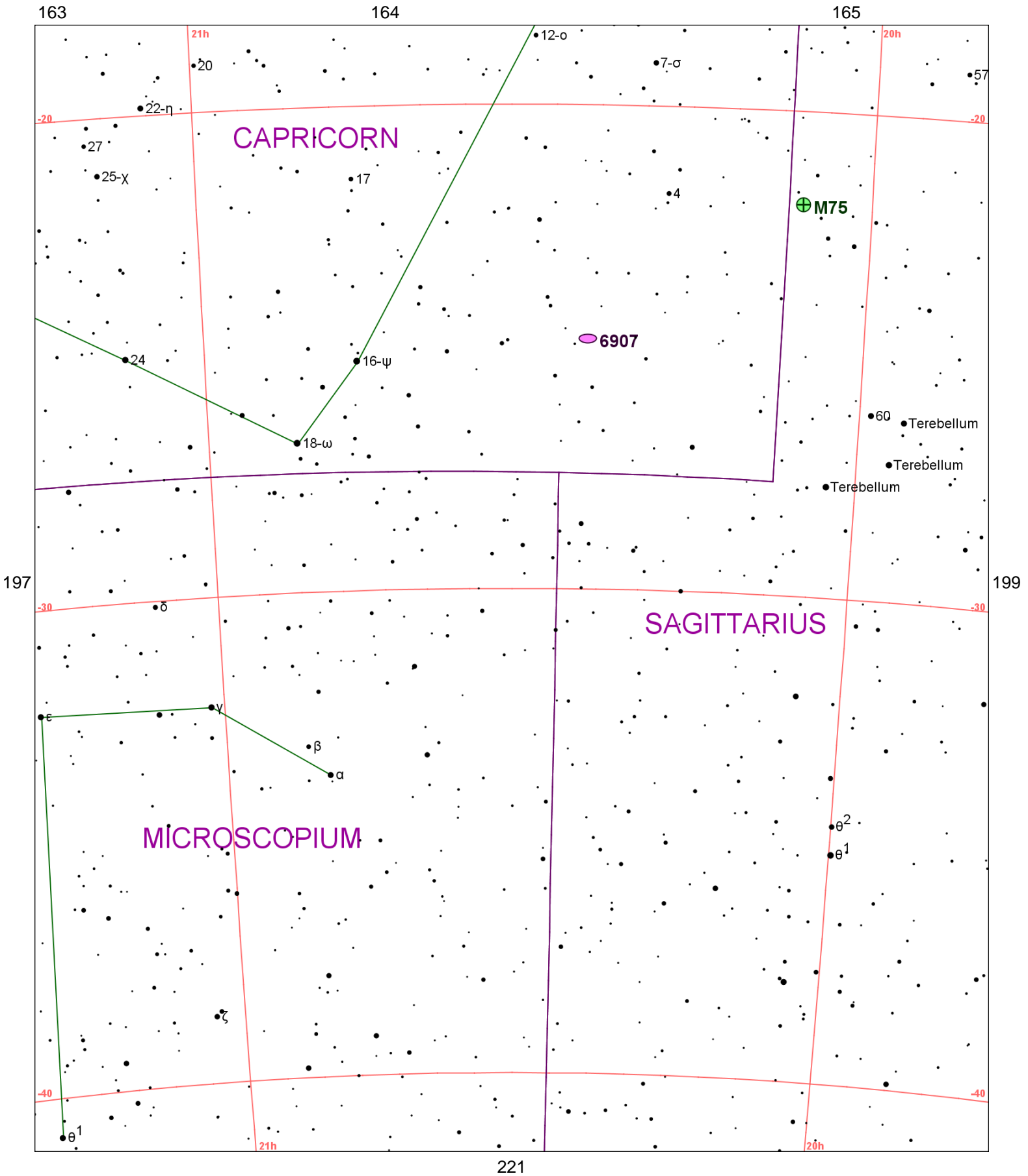
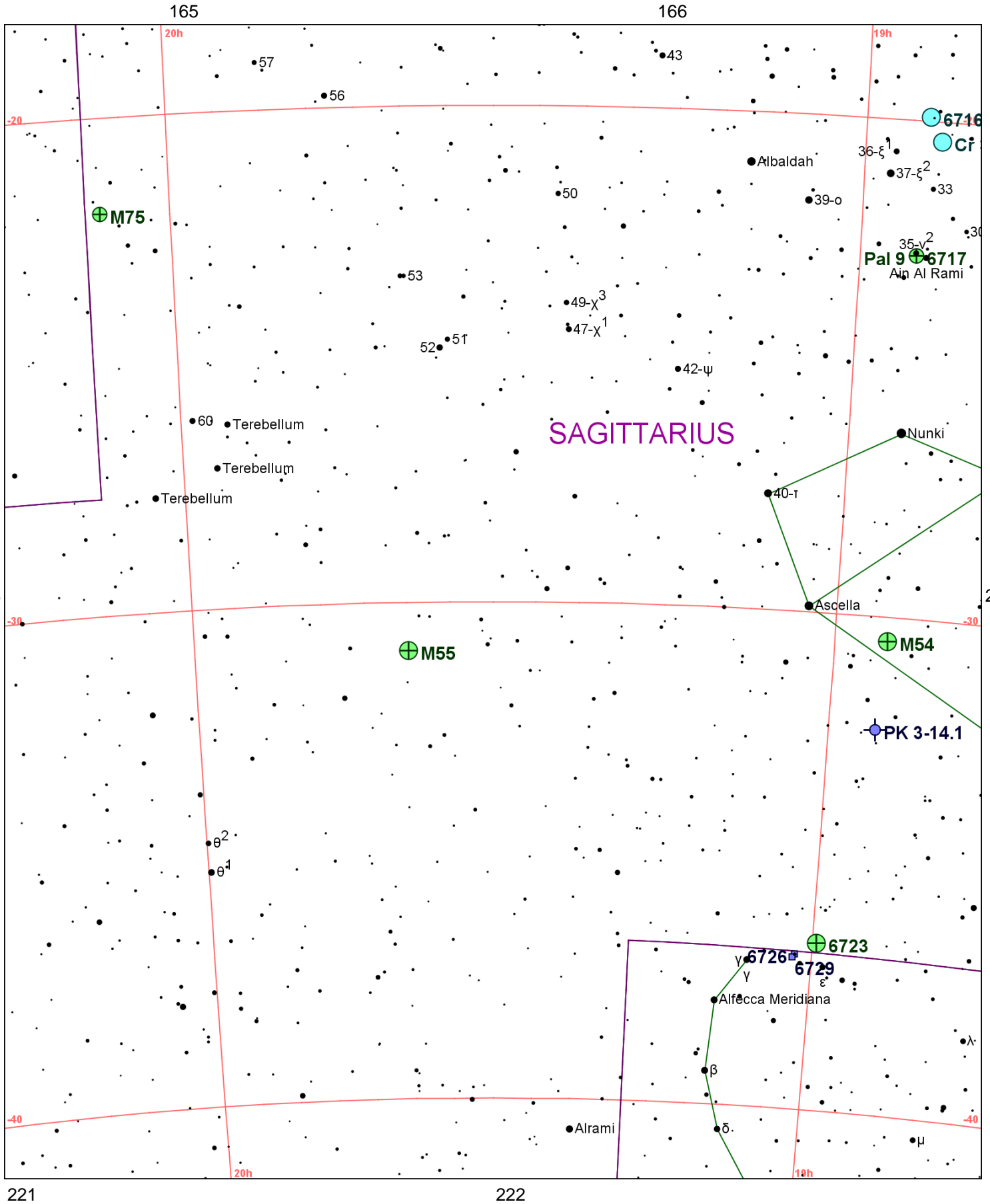


Chart 198													
Name	M	Const.	Mag.	Type	Size	R.A.	Decl.	C	R	S	O	# Stars	B
<b>Common</b>					<b>Notes</b>								
NGC 6864	M75	SGR	8.6	GC	6.0m	20h 06.1m	-21° 55.0'				O		B
					B,pL,R,vmbMBN,rr - * mags 17...								
NGC 6907		CAP	11.2	GAL	3.4m x 2.6m	20h 25.1m	-24° 49.0'				O		
					cF,cL,vIE,vglbM,3st p - H III 141;S shaped spiral								



## Chart 199

Name	M	Const.	Mag.	Type	Size	R.A.	Decl.	C	R	S	O	# Stars	B
<b>Common</b>					<b>Notes</b>								
Cr 394		SGR	6.3	OC	22.0m	18h 53.5m	-20° 23.0'						
NGC 6715	M54	SGR	7.7	GC	9.1m	18h 55.1m	-30° 29.0'				O		B
					vB,L,R,g,smbM - * mags 15...								
NGC 6716		SGR	7.5	OC	7.0m	18h 54.6m	-19° 54.0'					20	B
					Cl,pRi,st9...13								
NGC 6717		SGR	9.3	GC	3.9m	18h 55.1m	-22° 42.0'						
					F,S,rr,Cl+neb - H III 143								
NGC 6723		SGR	7.3	GC	11.0m	18h 59.6m	-36° 38.0'				O		
					vL,vIE,vgbM,rrr								
NGC 6726		CRA		DN	2m x 2m	19h 01.7m	-36° 53.0'				O		
					*6,7 in F,pL_neb - Complex neb region w var* TY & R CrA invl								
NGC 6729		CRA		DN	25m x 20m	19h 01.9m	-36° 57.0'	C68					
					Var*(11...) w neb - P w NGC 6726-7								
NGC 6809	M55	SGR	7.0	GC	19.0m	19h 40.0m	-30° 58.0'				O		B
					pB,L,R,vRi,vgbM - * mags 15...								
NGC 6864	M75	SGR	8.6	GC	6.0m	20h 06.1m	-21° 55.0'				O		B
					B,pL,R,vmbMBN,rr - * mags 17...								
PK 3-14.1		SGR	10.9	PN	4s	18h 55.6m	-32° 16.0'						
Pal 9		SGR	9.2	GC	3.9m	18h 55.1m	-22° 42.0'						



Chart 200													
Name	M	Const.	Mag.	Type	Size	R.A.	Decl.	C	R	S	O	# Stars	B
<b>Common</b>					<b>Notes</b>								
B 86		SGR		DN	4m	18h 02.7m	-27° 50.0'				O		
Ink Spot Nebula					very distinct Dneb - On Sgr star cloud preceding cluster NGC 6520								
Bochum 14		SGR	9.3	OC		18h 02.0m	-23° 42.0'					10	
Cr 345		SCO	10.9	OC	6.0m	17h 44.6m	-33° 45.0'						
Cr 351		SGR	9.3	OC	9.0m	17h 49.4m	-28° 44.0'					30	
Cr 367		SGR	6.4	OC	37.0m	18h 09.6m	-23° 59.0'					30	
Cr 394		SGR	6.3	OC	22.0m	18h 53.5m	-20° 23.0'						
IC 4715	M24	SGR	3.1	OC	95m x 35m	18h 26.6m	-18° 23.0'				O		B
Small Sagittarius Star Cloud					eeL cloud of st and neb - sev dark neb and NGC 6603 invl								
IC 4725	M25	SGR	4.6	OC	29m	18h 31.8m	-19° 07.0'				O	30	B
					Cl,pC - Contains U Sgr;Stars mags 6...10								
NGC 6425		SCO	7.2	OC	10m	17h 47.0m	-31° 32.0'					35	
					Cl,pS,iRi,IC,*10..12								
NGC 6441		SCO	7.4	GC	7.8m	17h 50.2m	-37° 03.0'				O		
					vB,pL,R,vgmbM								
NGC 6451		SCO	8.2	OC	8.0m	17h 50.7m	-30° 13.0'					80	
Tom Thumb cluster					Cl,pL,pRi,bifid,st12 - H VI 13;Dark lane down center								
NGC 6453		SCO	9.9	GC	3.5m	17h 50.9m	-34° 36.0'						
					Cl,iR,pmbM,r								
NGC 6469		SGR	8.2	OC	12.0m	17h 53.2m	-22° 17.0'					50	
					Cl,pRi,in Milky Way								
NGC 6475	M7	SCO	3.3	OC	80.0m	17h 53.9m	-34° 48.0'				O	80	B
Ptolemy's Cluster					Cl,vB,pRi,IC,*7...12 - 80 members to 10th mag;Fine naked eye cluster								
NGC 6494	M23	SGR	5.5	OC	27.0m	17h 57.1m	-18° 59.0'				O	150	B
					Cl,B,vL,pRi,IC,*10.. - 100 members to 13th mag								
NGC 6514	M20	SGR	6.3	DN	28.0m	18h 02.7m	-22° 58.0'				O	67	
Trifid Nebula					vB,vL,Trifid,D* inv - sev dark lanes;H IV 41 & V 10;D* HN 40 invl								
NGC 6520		SGR	7.6	OC	6.0m	18h 03.4m	-27° 53.0'		R103	S90	O	60	B
					Cl,pS,Ri,IC,st9...13 - H VII 7;Dark neb B86 on W edge								
NGC 6522		SGR	8.6	GC	5.6m	18h 03.6m	-30° 02.0'				O		
					B,pL,R,gvmBM,rrr - H I 49								
NGC 6523	M8	SGR	5.0	DN	45m x 30m	18h 03.7m	-24° 23.0'				O		B
Lagoon Nebula					!!!vB,eL,eIF,w L Cl - Cl NGC 6530 invl;dark lane crosses neb								
NGC 6528		SGR	9.5	GC	3.7m	18h 04.8m	-30° 03.0'						
					pF,cS,R,gbM,rrr - H II 200;* mags 16...;Gamma Sgr in field								
NGC 6530	M19	SGR	4.6	OC	15.0m	18h 04.5m	-24° 21.0'				O		B
					Cl,B,L,pRi,f M8 - In Lagoon nebula M8;25* mags 7...								
NGC 6531	M21	SGR	5.9	OC	13.0m	18h 04.2m	-22° 29.0'				O	70	
					Cl,pRi,IC,st9...12 - In Sgr OB1;36 members to 12th mag								
NGC 6544		SGR	8.3	GC	8.4m	18h 07.3m	-25° 00.0'				O		
					cF,pL,iR,r - H II 197								
NGC 6546		SGR	8.0	OC	13.0m	18h 07.4m	-23° 18.0'				O	150	
					Cl,vL,vRi								
NGC 6553		SGR	8.3	GC	3.2m	18h 09.3m	-25° 54.0'						
					F,L,IE,vglbM,rr - H IV 12;* mags 20...								
NGC 6558		SGR	9.3	GC	3.7m	18h 10.3m	-31° 46.0'						
					pB,pL,R,glbM,rrr								
NGC 6563		SGR	13.0	PN	54s x 41s	18h 12.0m	-33° 52.0'				O		
					F,L,cE,hazy edge								
NGC 6568		SGR	8.6	OC	13.0m	18h 12.8m	-21° 35.0'					50	
					Cl,vL,IC - H VII 30								
NGC 6569		SGR	8.7	GC	5.8m	18h 13.6m	-31° 50.0'						
					cB,L,R,rrr,*15.. - H II 201;D* Burnham 1353 in field								
NGC 6583		SGR	10.0	OC	2.8m	18h 15.8m	-22° 08.0'					35	
					Cl,pRi,pC,cE,st13... - H VII 31								
NGC 6595		SGR	7.0	OC	11.0m	18h 17.1m	-19° 52.0'					30	
					F,pL,cE,** inv								



Chart 200													
Name	M	Const.	Mag.	Type	Size	R.A.	Decl.	C	R	S	O	# Stars	B
<b>Common</b>					<b>Notes</b>								
NGC 6603		SGR	11.1	OC	5.0m	18h 18.4m	-18° 24.0'				O	100	
Cl,vRi,vmC,R - Within star cloud Messier 24													
NGC 6624		SGR	8.3	GC	5.9m	18h 23.7m	-30° 22.0'						
vB,pL,R,rrr,st16.. - H I 50													
NGC 6626	M28	SGR	6.9	GC	15m	18h 24.5m	-24° 52.0'				O		B
vB,L,R,geCM,rrr - 45' NW from Lambda Sgr;* mags 14...													
NGC 6629		SGR	10.5	PN	16s x 14s	18h 25.7m	-23° 12.0'				O		
pB,eeS,R													
NGC 6637	M69	SGR	7.7	GC	7.1m	18h 31.4m	-32° 21.0'				O		
B,L,R,rrr,*14..16													
NGC 6638		SGR	9.2	GC	2.2m	18h 30.9m	-25° 30.0'						
B,S,R,rr - H I 51													
NGC 6642		SGR	8.8	GC	0.8m	18h 31.9m	-23° 29.0'				O		
pB,pL,iR,gpmbM - H II 205;* mags 15...													
NGC 6652		SGR	8.9	GC	3.5m	18h 35.8m	-32° 59.0'						
B,S,IE,rrr,st15													
NGC 6656	M22	SGR	5.1	GC	24.0m	18h 36.4m	-23° 54.0'				O		B
vB,vL,R,vRi,vmC - Stars mags 11....;one of finest globs													
NGC 6681	M70	SGR	8.1	GC	7.8m	18h 43.2m	-32° 18.0'				O		
B,pL,R,gbM - Curved arc of stars to NE;* mags 14...													
NGC 6715	M54	SGR	7.7	GC	9.1m	18h 55.1m	-30° 29.0'				O		B
vB,L,R,g,smbM - * mags 15...													
NGC 6716		SGR	7.5	OC	7.0m	18h 54.6m	-19° 54.0'					20	B
Cl,pRi,st9...13													
NGC 6717		SGR	9.3	GC	3.9m	18h 55.1m	-22° 42.0'						
F,S,rr,Cl+neb - H III 143													
NGC 6723		SGR	7.3	GC	11.0m	18h 59.6m	-36° 38.0'				O		
vL,vIE,vgbM,rrr													
NGC 6726		CRA		DN	2m x 2m	19h 01.7m	-36° 53.0'				O		
*6,7 in F,pL neb - Complex neb region w var* TY & R CrA invl													
NGC 6729		CRA		DN	25m x 20m	19h 01.9m	-36° 57.0'	C68					
Var*(11...) w neb - P w NGC 6726-7													
PK 3- 4.7		SGR	11.0	PN	12s	18h 11.6m	-28° 22.0'						
PK 3-14.1		SGR	10.9	PN	4s	18h 55.6m	-32° 16.0'						
PK 7+ 1.1		SGR	11.0	PN	6.6s	17h 55.1m	-21° 45.0'						
Pal 9		SGR	9.2	GC	3.9m	18h 55.1m	-22° 42.0'						
Tr 29		SCO	7.5	OC	9.0m	17h 41.6m	-40° 06.0'					30	
Tr 30		SCO	8.8	OC	10.0m	17h 56.5m	-35° 19.0'					80	
F,pL,lrr - In field of M 7													
Tr 31		SGR	9.8	OC	8.0m	17h 59.9m	-28° 11.0'					25	
Tr 33		SGR	7.8	OC	7.0m	18h 24.8m	-19° 41.0'					20	