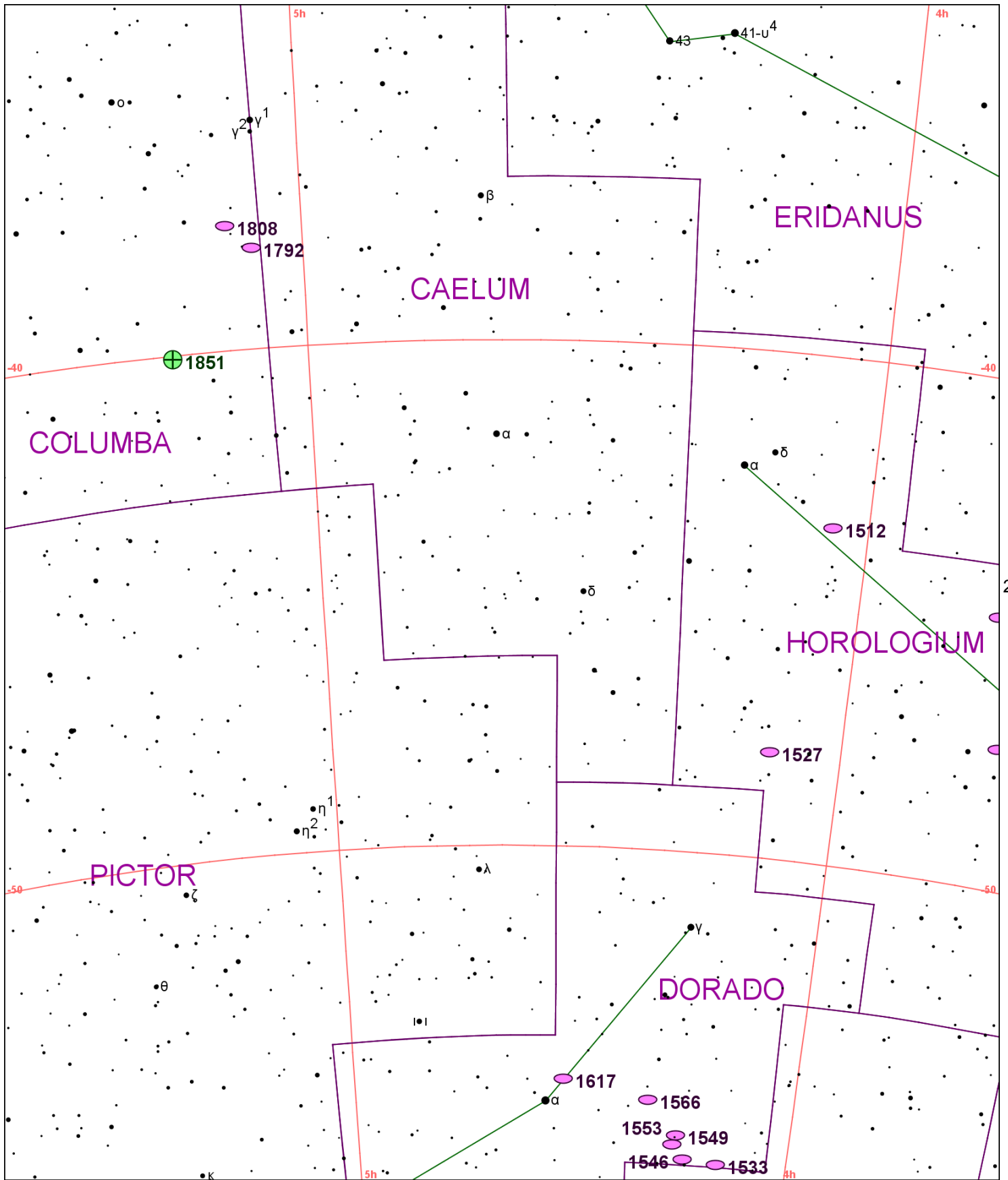


213

214

215



232

234

Chart 233													
Name	M	Const.	Mag.	Type	Size	R.A.	Decl.	C	R	S	O	# Stars	B
Common					Notes								
NGC 1433		HOR	9.9	GAL	6.1m x 5.7m	3h 42.0m	-47° 13.0'						
					vB,L,pmE,vsmbM*10								
NGC 1448		HOR	10.7	GAL	7.5m x 2m	3h 44.5m	-44° 39.0'						
					pB,L,vmE222 - Nearly edge-on								
NGC 1512		HOR	10.3	GAL	9.7m x 5.3m	4h 03.9m	-43° 21.0'						
					B,cL,R,bM - lenticular								
NGC 1527		HOR	10.8	GAL	3.9m x 1.5m	4h 08.4m	-47° 54.0'						
					pB,pS,E77,vsmbMRN								
NGC 1533		DOR	10.7	GAL	2.5m x 2.1m	4h 09.9m	-56° 07.0'						
					vB,vL,R,smbM,2*10 nf								
NGC 1546		DOR	10.9	GAL	3.2m x 1.9m	4h 14.6m	-56° 04.0'						
					pB,IE,gbMEN,**p								
NGC 1549		DOR	9.8	GAL	4.4m x 3.6m	4h 15.8m	-55° 36.0'						
					B,pS,R - P w NGC 1553								
NGC 1553		DOR	9.4	GAL	5m x 3m	4h 16.2m	-55° 47.0'						
					vB,pS,R,gmbM,am 3*;a Dneb								
NGC 1566		DOR	9.7	GAL	8.2m x 6.5m	4h 20.0m	-54° 56.0'				O		
					B,vL,vg,svmbM,15d in RA								
NGC 1617		DOR	10.4	GAL	4.8m x 2.4m	4h 31.7m	-54° 36.0'						
					B,L,mE106,vg,vsmbMN 5"								
NGC 1792		COL	10.2	GAL	5.6m x 2.9m	5h 05.2m	-37° 59.0'				O		
					vB,vL,mE314,glbM,rr								
NGC 1808		COL	9.9	GAL	6.3m x 4.3m	5h 07.7m	-37° 31.0'				O		
					B,L,E,psbM - F outer arms								
NGC 1851		COL	7.3	GC	11m	5h 14.1m	-40° 03.0'	C73			O		B
					!vB,vL,R,vsvvbM,rrr - X-ray source;vRi w F*								

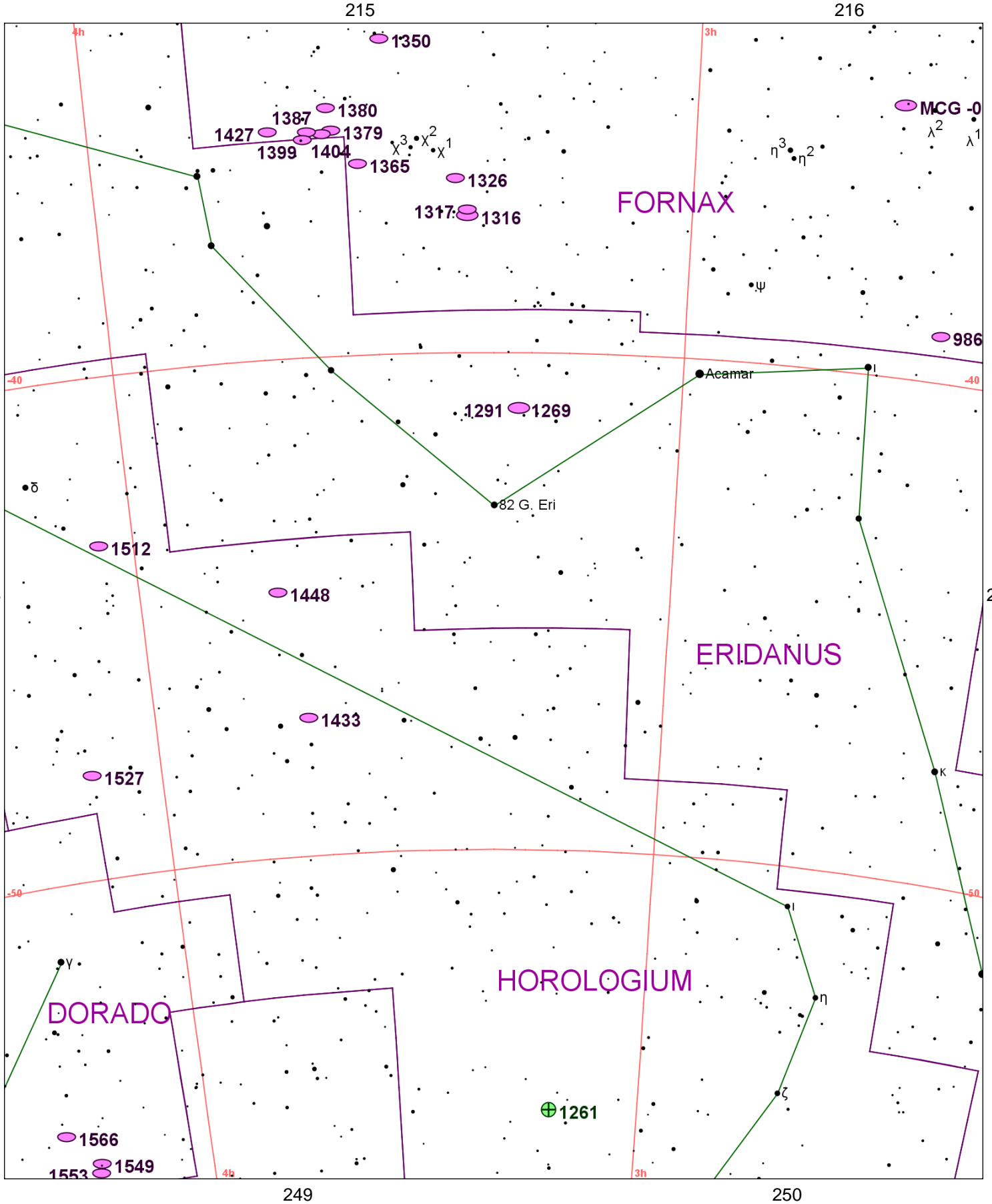


Chart 234													
Name	M	Const.	Mag.	Type	Size	R.A.	Decl.	C	R	S	O	# Stars	B
Common					Notes								
MCG -06-07-001		FOR	8.1	GAL	17m x 12m	2h 39.9m	-34° 32.0'						
					vF,vvL,R,Low Surface Brightness - Invl GLOCL NGC 1049;Memb Local Grp;Brightest * = 19mag								
NGC 986		FOR	10.9	GAL	4m x 3.2m	2h 33.6m	-39° 03.0'						
					pB,L,pmE,sbM,BI-N								
NGC 1261		HOR	8.4	GC	6.9m	3h 12.3m	-55° 13.0'	C87			O		B
					B,L,R,rr								
NGC 1269		ERI	9.4	GAL	9.7m x 8.4m	3h 17.3m	-41° 06.0'						
					vB,R,gmbM								
NGC 1291		ERI	8.5	GAL	9.7m x 8.4m	3h 17.3m	-41° 06.0'				O		
					vB,pL,R,mbM,er - comp 2;2;PA138;UGC 2666								
NGC 1316		FOR	8.5	GAL	11.2m x 7.7m	3h 22.7m	-37° 13.0'				O		
					vB,cL,vIE,vsmbMN - Fornax Galaxy Cluster member								
NGC 1317		FOR	11.0	GAL	2.8m x 2.4m	3h 22.7m	-37° 06.0'						
					pB,pS,psbM - Fornax Galaxy Cluster member								
NGC 1326		FOR	10.5	GAL	4.3m x 2.9m	3h 23.9m	-36° 28.0'						
					pS,vsmbMN - Fornax Galaxy Cluster member								
NGC 1350		FOR	10.3	GAL	5.4m x 2.9m	3h 31.1m	-33° 38.0'				O		
					B,L,mE,vmbMRN - Fornax Galaxy Cluster member								
NGC 1365		FOR	9.6	GAL	11m x 6.2m	3h 33.6m	-36° 08.0'				O		
					!!,vB,vL,mE,BN - Best example of barred spiral;Fornax Galaxy Cluster member								
NGC 1379		FOR	10.9	GAL	2.4m x 2.3m	3h 36.1m	-35° 26.0'						
					B,pL,R,gpmbM - Fornax Galaxy Cluster member								
NGC 1380		FOR	9.9	GAL	4.8m x 2.9m	3h 36.5m	-34° 59.0'				O		
					vB,L,R,psbM - Fornax Galaxy Cluster member								
NGC 1387		FOR	10.7	GAL	3.2m x 3.1m	3h 37.0m	-35° 30.0'						
					vB,pL,R,gmbM - Fornax Galaxy Cluster member								
NGC 1399		FOR	9.6	GAL	6.6m x 6.1m	3h 38.5m	-35° 27.0'				O		
					vB,pL,psbM,rr - Fornax Galaxy Cluster member								
NGC 1404		FOR	10.0	GAL	3.9m x 3.3m	3h 38.9m	-35° 36.0'						
					vB,pL,R,psmbM - Fornax Galaxy Cluster member								
NGC 1427		FOR	10.9	GAL	3.8m x 2.6m	3h 42.3m	-35° 24.0'						
					pF,S,R,psmbM - Fornax Galaxy Cluster member								
NGC 1433		HOR	9.9	GAL	6.1m x 5.7m	3h 42.0m	-47° 13.0'						
					vB,L,pmE,vsmbM*10								
NGC 1448		HOR	10.7	GAL	7.5m x 2m	3h 44.5m	-44° 39.0'						
					pB,L,vmE222 - Nearly edge-on								
NGC 1512		HOR	10.3	GAL	9.7m x 5.3m	4h 03.9m	-43° 21.0'						
					B,cL,R,bM - lenticular								
NGC 1527		HOR	10.8	GAL	3.9m x 1.5m	4h 08.4m	-47° 54.0'						
					pB,pS,E77,vsmbMRN								
NGC 1549		DOR	9.8	GAL	4.4m x 3.6m	4h 15.8m	-55° 36.0'						
					B,pS,R - P w NGC 1553								
NGC 1553		DOR	9.4	GAL	5m x 3m	4h 16.2m	-55° 47.0'						
					vB,pS,R,gmbM,am 3*;a Dneb								
NGC 1566		DOR	9.7	GAL	8.2m x 6.5m	4h 20.0m	-54° 56.0'				O		
					B,vL,vg,svmbM,15d in RA								

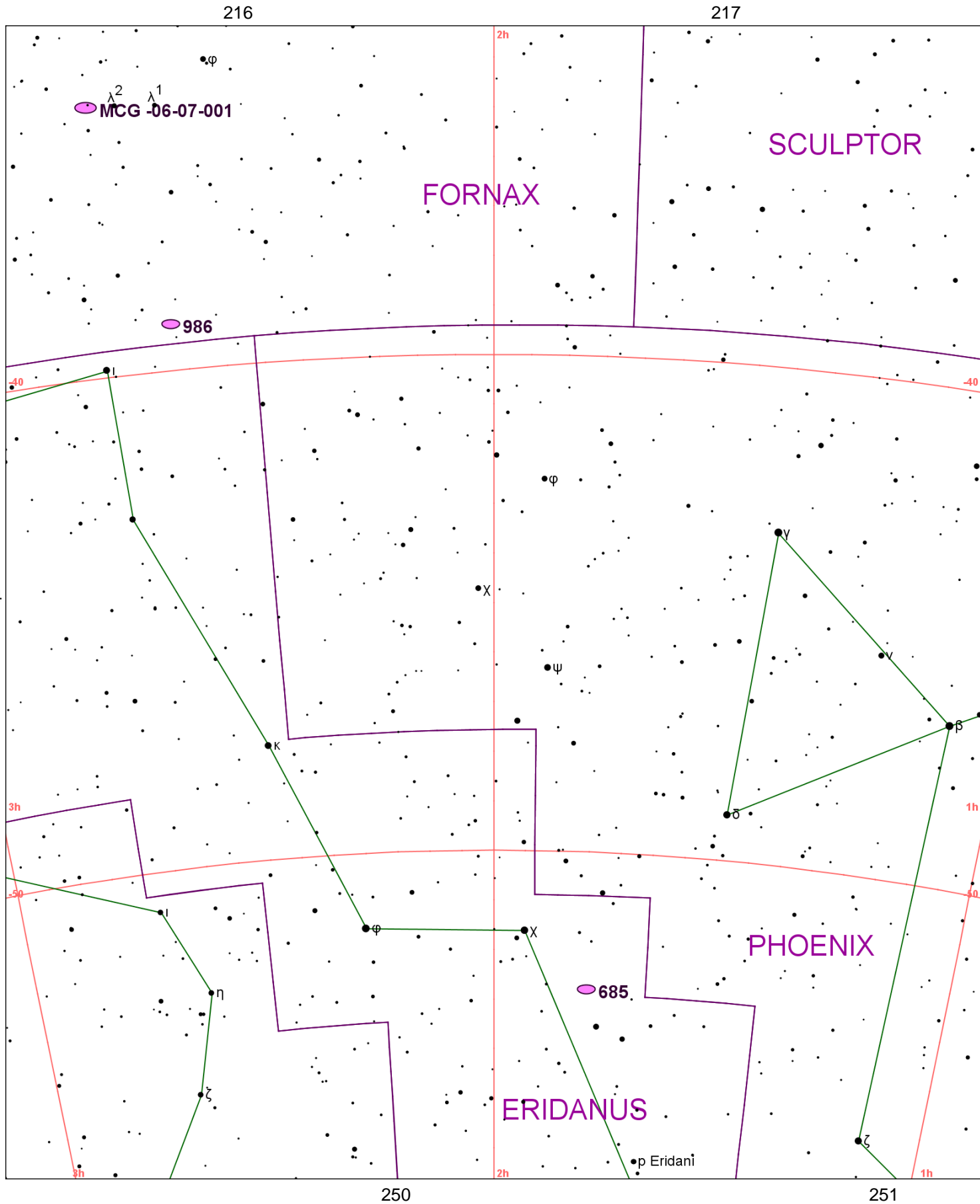
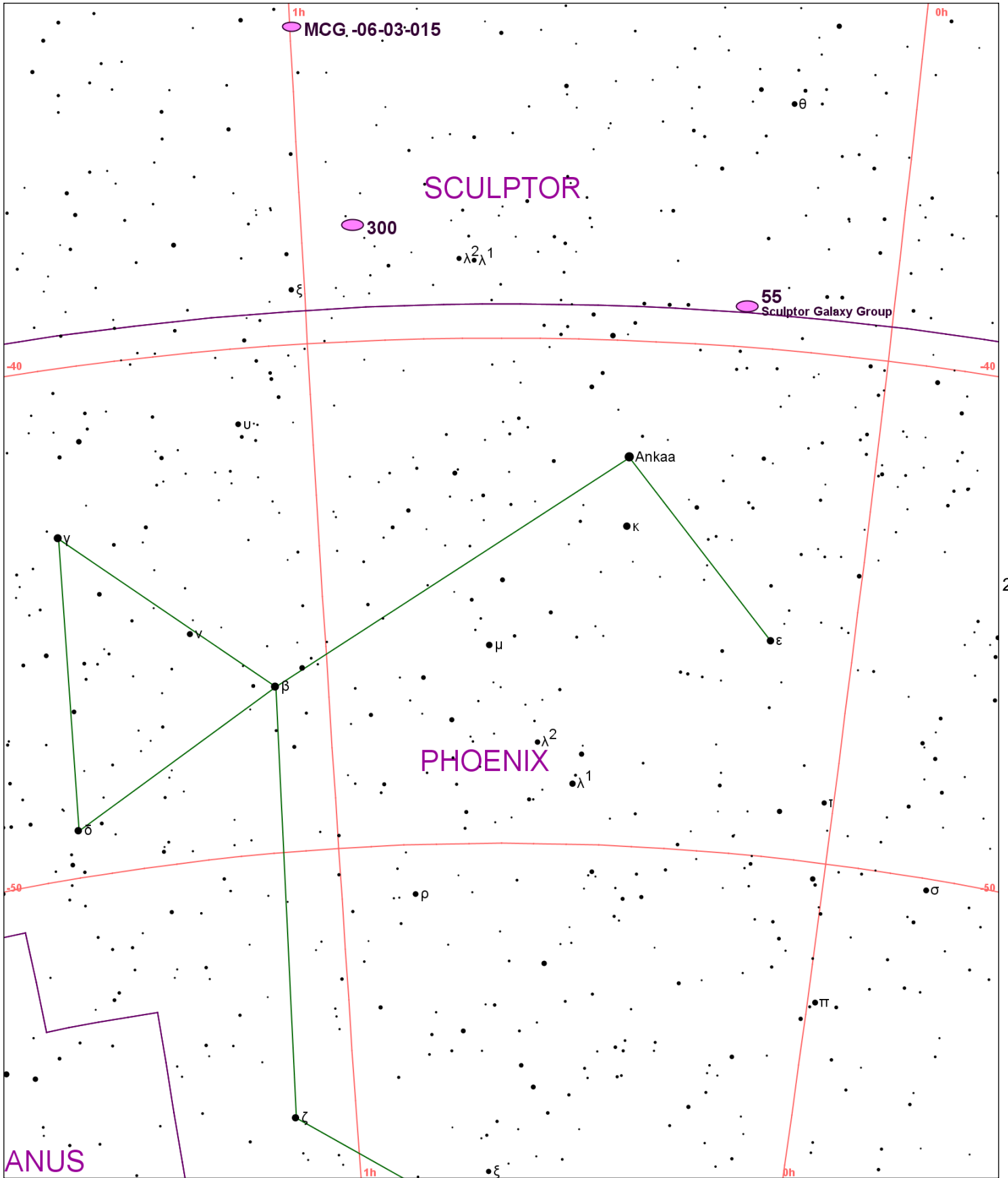


Chart 235

Name	M	Const.	Mag.	Type	Size	R.A.	Decl.	C	R	S	O	# Stars	B
Common					Notes								
MCG -06-07-001		FOR	8.1	GAL	17m x 12m	2h 39.9m	-34° 32.0'						
					vF,vvL,R,Low Surface Brightness - Invl GLOCL NGC 1049;Memb Local Grp;Brightest * = 19mag								
NGC 685		ERI	11.0	GAL	3.6m x 3.1m	1h 47.7m	-52° 46.0'						
					F,vL,R,vgvlbM								
NGC 986		FOR	10.9	GAL	4m x 3.2m	2h 33.6m	-39° 03.0'						
					pB,L,pmE,sbM,BI-N								

217

218



235

219

-50

-50

ANUS

1h

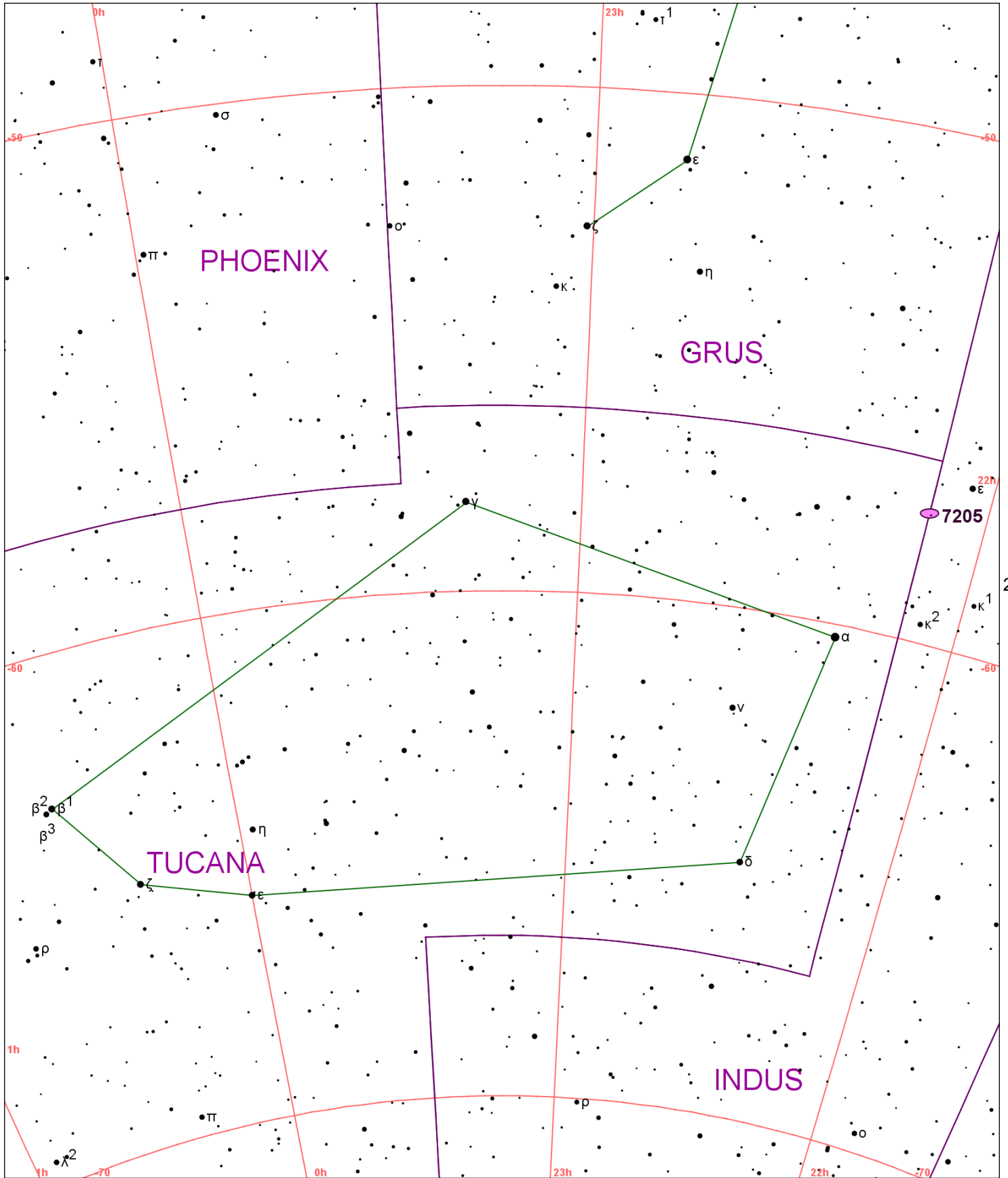
0h

251

Chart 236													
Name	M	Const.	Mag.	Type	Size	R.A.	Decl.	C	R	S	O	# Stars	B
Common					Notes								
MCG -06-03-015		SCL	10.5	GAL	40m x 31m	0h 59.9m	-33° 42.0'						
					vvL,eeF,IE - ESO 351-G030;Member of Local Group;large and dim								
NGC 55		SCL	7.9	GAL	31.2m x 5.9m	0h 14.9m	-39° 11.0'	C72			O		
Sculptor Galaxy Group					vB,vL,vmE,triN								
NGC 300		SCL	8.1	GAL	19.3m x 13.3m	0h 54.9m	-37° 41.0'	C70			O		
					pB,vL,vmiE,vgpmbM - Large S-shaped;loose structured spiral								

219

220



251

238

252

Chart 237

Name	M	Const.	Mag.	Type	Size	R.A.	Decl.	C	R	S	O	# Stars	B
Common					Notes								
NGC 7205		IND	10.9	GAL	4m x 2m	22h 08.6m	-57° 27.0'						
					pB,L,cE,gpslbM								

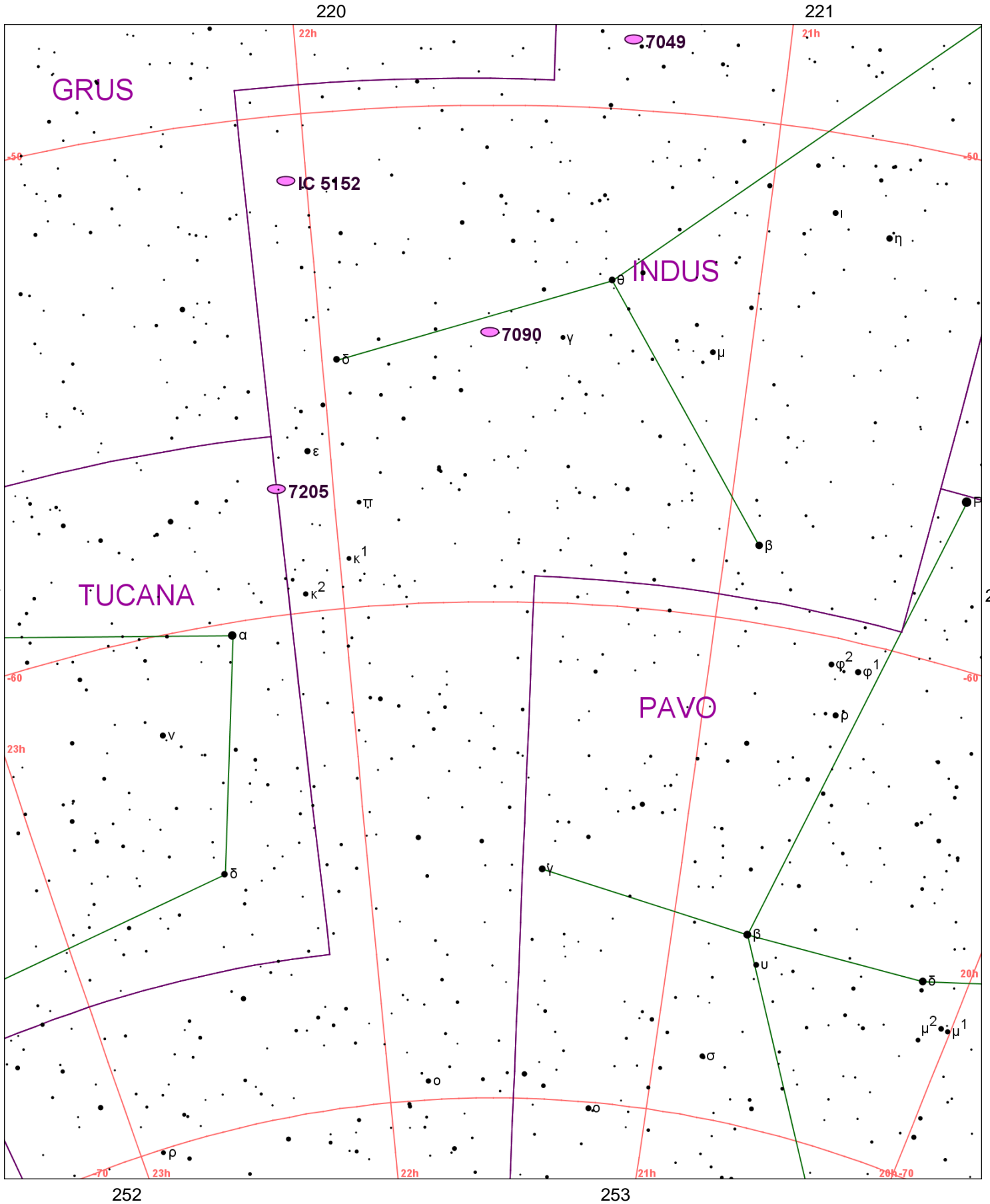


Chart 238

Name	M	Const.	Mag.	Type	Size	R.A.	Decl.	C	R	S	O	# Stars	B
Common					Notes								
IC 5152		IND	10.6	GAL	5.5m x 4m	22h 02.7m	-51° 18.0'						
					F,cL,cE 150 degrees, cbM - Member of Local Group								
NGC 7049		IND	10.7	GAL	4.5m x 3m	21h 19.0m	-48° 34.0'						
					vB,pS,E,mbM								
NGC 7090		IND	10.7	GAL	7.3m x 1.2m	21h 36.5m	-54° 33.0'				O		
					pB,pL,vmE127,g,pslbM								
NGC 7205		IND	10.9	GAL	4m x 2m	22h 08.6m	-57° 27.0'						
					pB,L,cE,gpslbM								

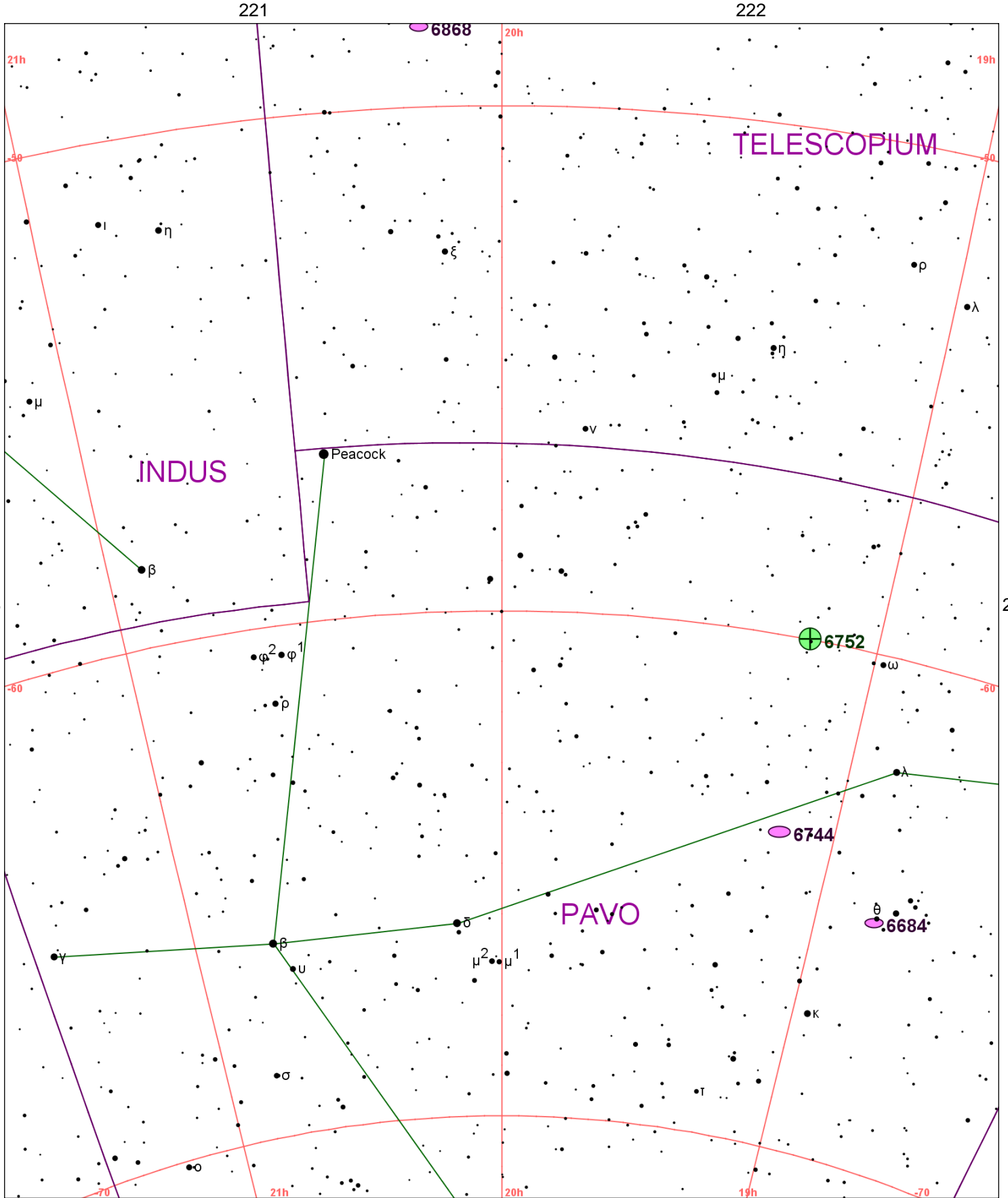


Chart 239

Name	M	Const.	Mag.	Type	Size	R.A.	Decl.	C	R	S	O	# Stars	B
Common					Notes								
NGC 6684		PAV	10.4	GAL	4.1m x 2.6m	18h 49.0m	-65° 10.0'						
					vB,pL,R,vg,psvmbM								
NGC 6744		PAV	8.3	GAL	20.2m x 13.2m	19h 09.8m	-63° 51.0'	C101					
					cB,cL,R,vg,svmbM,r								
NGC 6752		PAV	5.4	GC	20.4m	19h 10.9m	-59° 59.0'	C93			O		B
					B,vL,iR,st11..16 - Fine cluster								
NGC 6868		TEL	10.6	GAL	3.6m x 2.8m	20h 09.9m	-48° 23.0'						
					vB,S,R,pgvmbM								

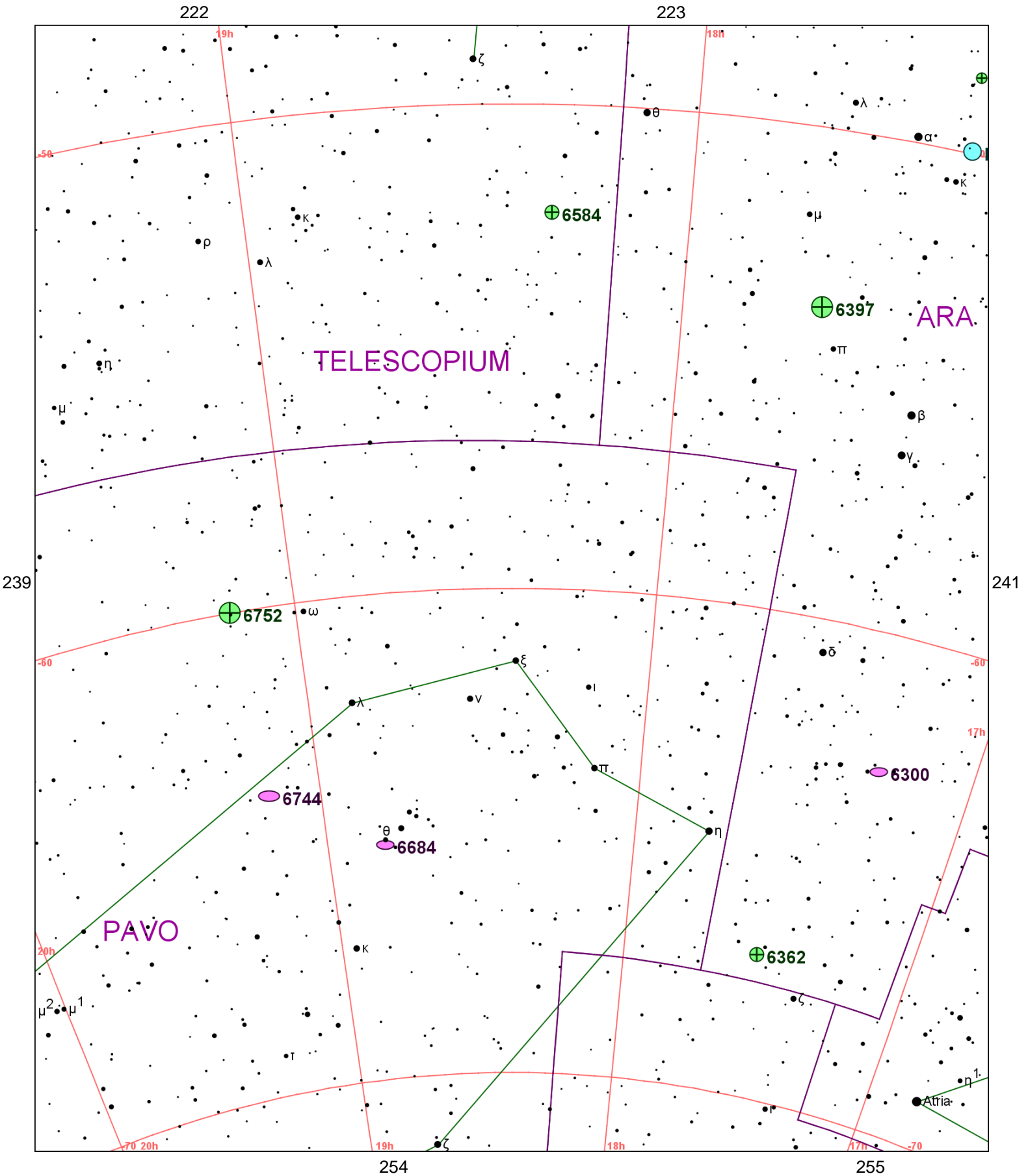


Chart 240													
Name	M	Const.	Mag.	Type	Size	R.A.	Decl.	C	R	S	O	# Stars	B
Common					Notes								
IC 4651		ARA	6.9	OC	10m	17h 24.8m	-49° 56.0'					80	B
					Cl,pC - Not much condensation--Hartung;70 * mags 10..14								
NGC 6300		ARA	10.2	GAL	4.7m x 2.9m	17h 17.0m	-62° 49.0'						
					F,vL,vIE,am st,2* inv								
NGC 6352		ARA	10.7	GC	7.1m	17h 25.5m	-48° 25.0'	C81			O		B
					pF,L - globular ESO 228-SC003								
NGC 6362		ARA	8.3	GC	10.7m	17h 31.9m	-67° 03.0'						B
					B,L,vgmbM,rrr								
NGC 6397		ARA	5.7	GC	25.7m	17h 40.7m	-53° 40.0'	C86			O		B
					B,vL,Ri,st 10.. - Poss nearest glob								
NGC 6584		TEL	9.2	GC	7.9m	18h 18.6m	-52° 13.0'						B
					cB,cL,R,gmbM,rrr								
NGC 6684		PAV	10.4	GAL	4.1m x 2.6m	18h 49.0m	-65° 10.0'						
					vB,pL,R,v,psvmbM								
NGC 6744		PAV	8.3	GAL	20.2m x 13.2m	19h 09.8m	-63° 51.0'	C101					
					cB,cL,R,v,svmbM,r								
NGC 6752		PAV	5.4	GC	20.4m	19h 10.9m	-59° 59.0'	C93			O		B
					B,vL,iR,st11..16 - Fine cluster								