

Chart 217													
Name	M	Const.	Mag.	Type	Size	R.A.	Decl.	C	R	S	O	# Stars	B
Common					Notes								
MCG -06-03-015		SCL	10.5	GAL	40m x 31m	0h 59.9m	-33° 42.0'						
					vvL,eeF,IE - ESO 351-G030;Member of Local Group;large and dim								
NGC 288		SCL	8.1	GC	13.8m	0h 52.8m	-26° 35.0'				O		
					B,L,IE,st 12...16 - H VI 20;loose structured globular								
NGC 289		SCL	11.0	GAL	5.4m x 3.8m	0h 52.7m	-31° 12.0'		R10				
					vB,L,pmE,gbM,* 11 np								
NGC 300		SCL	8.1	GAL	19.3m x 13.3m	0h 54.9m	-37° 41.0'	C70			O		
					pB,vL,vmiE,vgpmbM - Large S-shaped;loose structured spiral								
NGC 578		CET	10.9	GAL	4.8m x 3m	1h 30.5m	-22° 40.0'						
					B,L,pmE,gpmbM								
NGC 613		SCL	10.1	GAL	5.2m x 4.3m	1h 34.3m	-29° 25.0'				O		
					vB,vL,vmE118,sbM,* nf - H I 281								

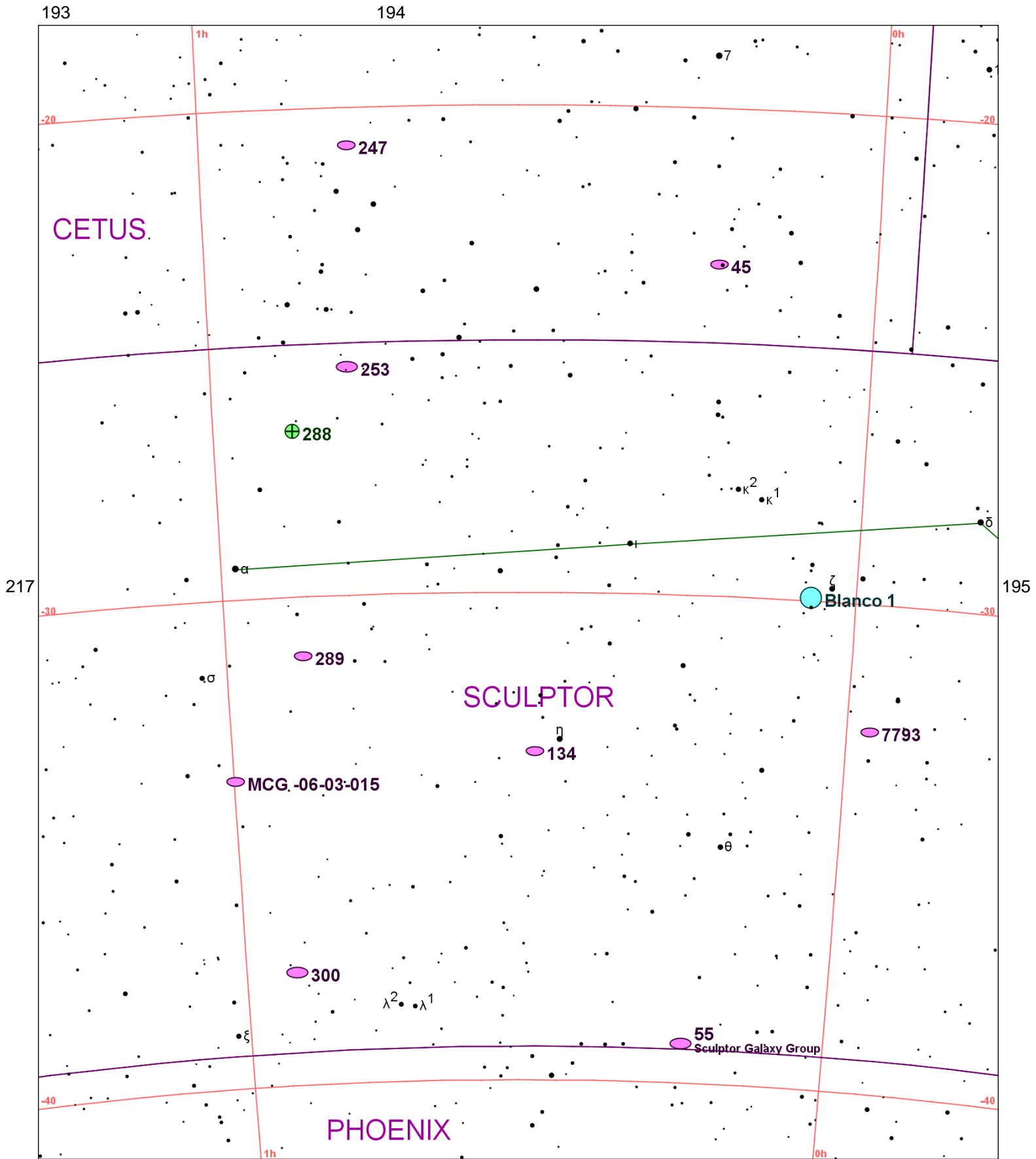


Chart 218													
Name	M	Const.	Mag.	Type	Size	R.A.	Decl.	C	R	S	O	# Stars	B
Common					Notes								
Blanco 1		SCL	4.5	OC	90m	0h 04.3m	-29° 56.0'					30	
Zeta Sculptoris cluster													
MCG -06-03-015		SCL	10.5	GAL	40m x 31m	0h 59.9m	-33° 42.0'						
vvL,eeF,IE - ESO 351-G030;Member of Local Group;large and dim													
NGC 45		CET	10.6	GAL	7.6m x 5.4m	0h 14.1m	-23° 11.0'						
eF,L,vgvlbM,L*cont f - Loose struct;Spiral pattern dim													
NGC 55		SCL	7.9	GAL	31.2m x 5.9m	0h 14.9m	-39° 11.0'	C72			O		
Sculptor Galaxy Group					vB,vL,vmE,triN								
NGC 134		SCL	10.4	GAL	8.4m x 1.8m	0h 30.4m	-33° 15.0'				O		
vB,L,vmE 47 degrees,psbM,f of 2,*10 np 45" - Nearly edge-on													
NGC 247		CET	9.1	GAL	21m x 5.6m	0h 47.1m	-20° 46.0'	C62			O		
F,eL,vmE 172 degrees - H V 20													
NGC 253		SCL	7.2	GAL	26.4m x 6m	0h 47.6m	-25° 18.0'	C65	R13	S86	O		B
!!vvB,vvL,vmE 54 degrees,gbM - H V 1;Sandage-arms are more defined by dust than *													
NGC 288		SCL	8.1	GC	13.8m	0h 52.8m	-26° 35.0'				O		
B,L,IE,st 12...16 - H VI 20;loose structured globular													
NGC 289		SCL	11.0	GAL	5.4m x 3.8m	0h 52.7m	-31° 12.0'		R10				
vB,L,pmE,gbM,* 11 np													
NGC 300		SCL	8.1	GAL	19.3m x 13.3m	0h 54.9m	-37° 41.0'	C70			O		
pB,vL,vmiE,vgpmbM - Large S-shaped;loose structured spiral													
NGC 7793		SCL	9.1	GAL	9.6m x 6.4m	23h 57.8m	-32° 36.0'				O		
Like a comet (1850)													

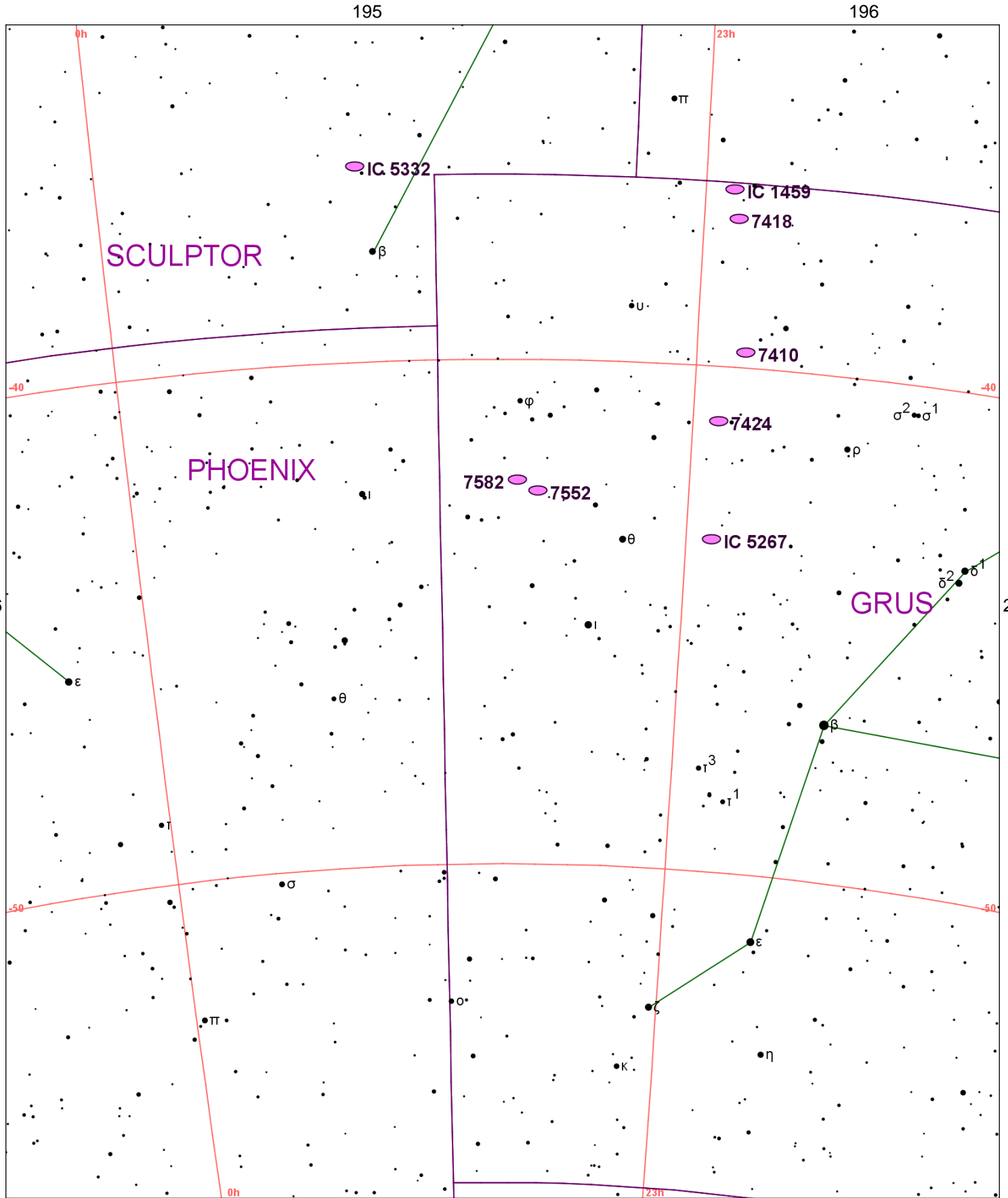
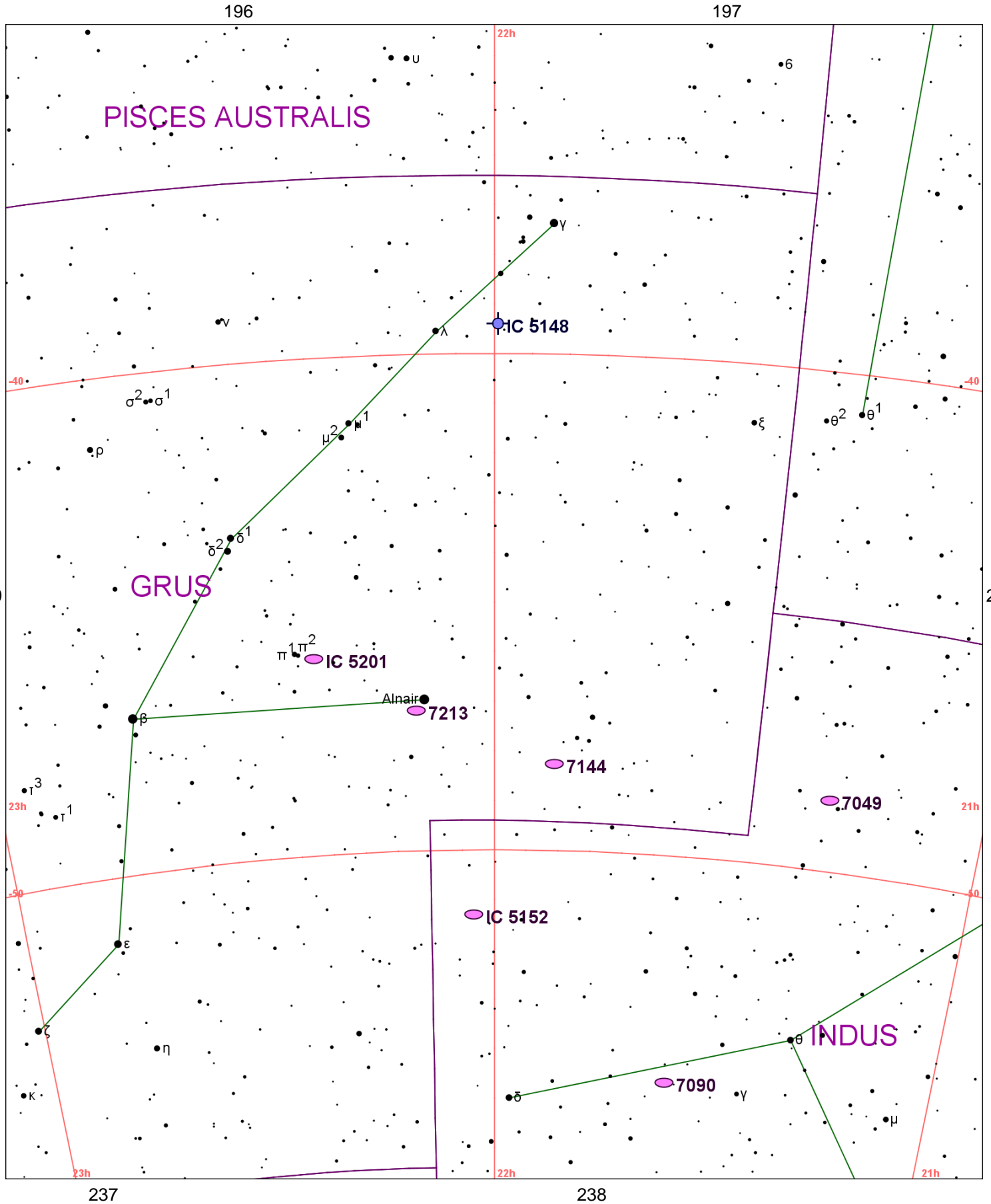


Chart 219

Name	M	Const.	Mag.	Type	Size	R.A.	Decl.	C	R	S	O	# Stars	B
Common					Notes								
IC 1459		GRU	10.0	GAL	5.1m x 3.7m	22h 57.2m	-36° 28.0'				O		
					F,pS,com,N=12 m								
IC 5267		GRU	10.5	GAL	5.4m x 3.5m	22h 57.2m	-43° 24.0'						
					pB,S,R,mbM - Brightest in group								
IC 5332		SCL	10.5	GAL	8.4m x 7.6m	23h 34.5m	-36° 06.0'						
					eF,vL,bM,bet 2 *,D* p 45 deg								
NGC 7410		GRU	10.3	GAL	5.5m x 1.5m	22h 55.0m	-39° 40.0'				O		
					cB,L,vmE43,mbM - Nearly edge-on								
NGC 7418		GRU	10.9	GAL	3.8m x 2.7m	22h 56.6m	-37° 02.0'						
					cB,vL,vIE,vglbM								
NGC 7424		GRU	10.5	GAL	10m x 8.2m	22h 57.3m	-41° 04.0'						
					F,cL,vIE,vgmbM								
NGC 7552		GRU	10.6	GAL	3.4m x 3m	23h 16.2m	-42° 35.0'						
					B,S,mE90,vsbM *13								
NGC 7582		GRU	10.6	GAL	5m x 2.3m	23h 18.4m	-42° 22.0'						
					pB,L,pmE,gbM - Group w NGC 7590 & 7599								



PISCES AUSTRALIS

GRUS

INDUS

IC 5148

IC 5201

Alnair 7213

7144

7049

IC 5152

7090

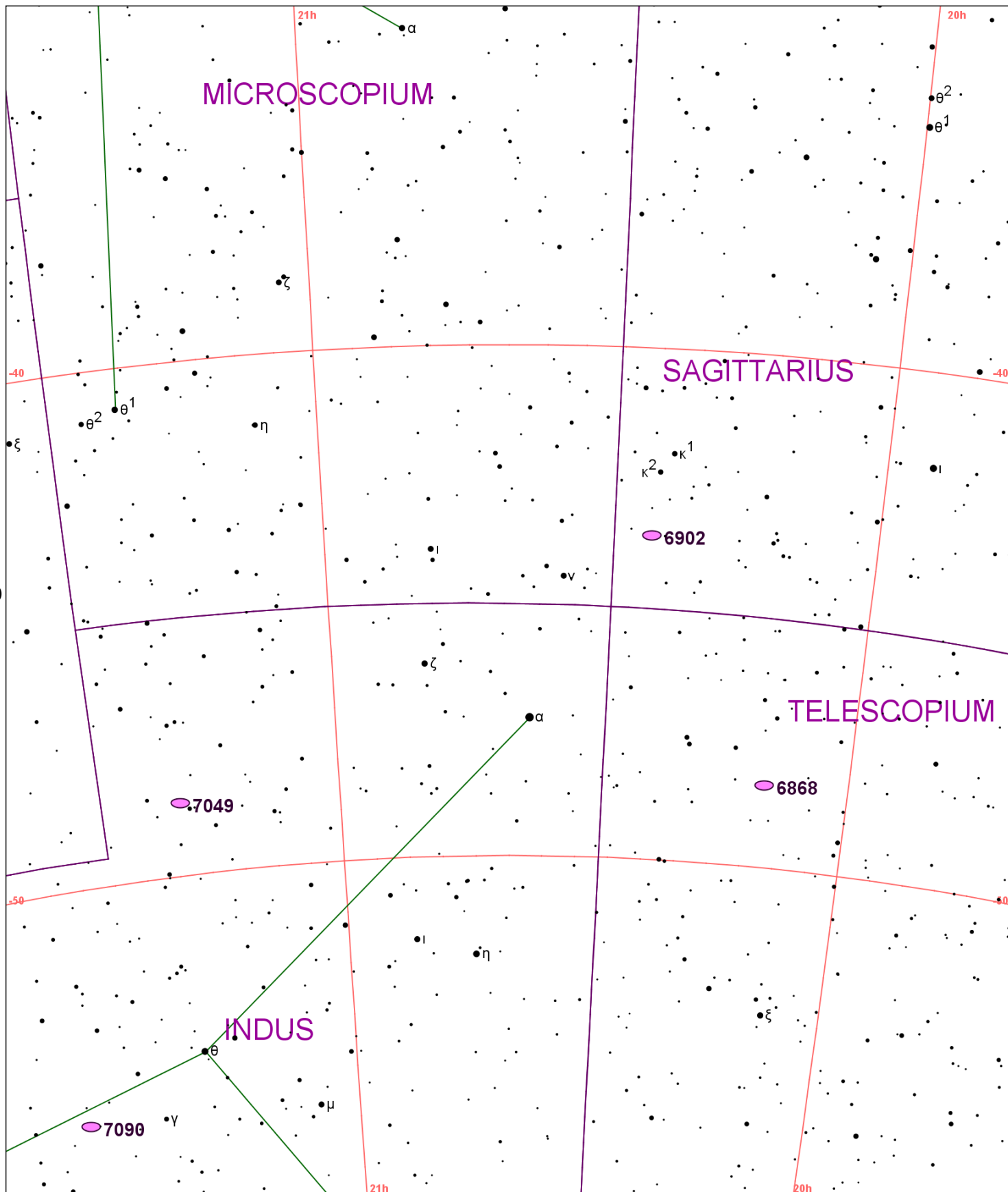
Chart 220

Name	M	Const.	Mag.	Type	Size	R.A.	Decl.	C	R	S	O	# Stars	B
Common					Notes								
IC 5148		GRU	11.0	PN	120s	21h 59.6m	-39° 23.0'						
					pB,L,IE,* att,annular - Also IC 5149 and IC 5150;called IC 5150 in Hartung								
IC 5152		IND	10.6	GAL	5.5m x 4m	22h 02.7m	-51° 18.0'						
					F,cL,cE 150 degrees, cbM - Member of Local Group								
IC 5201		GRU	10.6	GAL	7.8m x 4m	22h 21.0m	-46° 02.0'						
NGC 7049		IND	10.7	GAL	4.5m x 3m	21h 19.0m	-48° 34.0'						
					vB,pS,E,mbM								
NGC 7090		IND	10.7	GAL	7.3m x 1.2m	21h 36.5m	-54° 33.0'				O		
					pB,pL,vmE127,g,pslbM								
NGC 7144		GRU	10.8	GAL	3.7m x 3.6m	21h 52.7m	-48° 15.0'						
					vB,pS,R,mbMN								
NGC 7213		GRU	10.1	GAL	3.7m x 3.4m	22h 09.3m	-47° 10.0'						
					vB,pS,R,gbM - 16' SE from Alpha Gru								

197

198

199



220

222

Chart 221

Name	M	Const.	Mag.	Type	Size	R.A.	Decl.	C	R	S	O	# Stars	B
Common					Notes								
NGC 6868		TEL	10.6	GAL	3.6m x 2.8m	20h 09.9m	-48° 23.0'						
					vB,S,R,pgymbM								
NGC 6902		SGR	10.9	GAL	6.1m x 4.1m	20h 24.5m	-43° 39.0'						
					F,cS,R,bM								
NGC 7049		IND	10.7	GAL	4.5m x 3m	21h 19.0m	-48° 34.0'						
					vB,pS,E,mbM								
NGC 7090		IND	10.7	GAL	7.3m x 1.2m	21h 36.5m	-54° 33.0'				O		
					pB,pL,vmE127,g,pslbM								

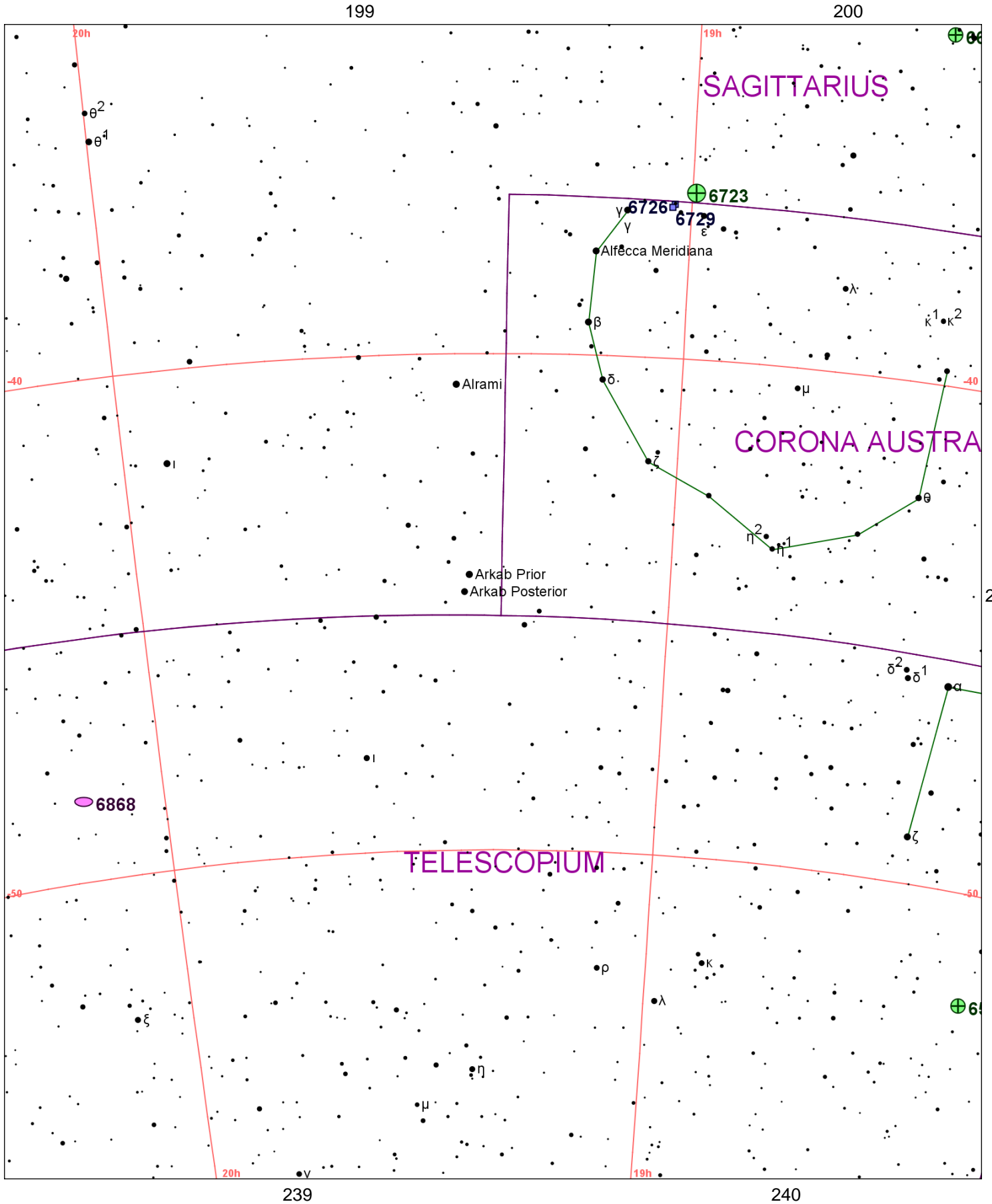


Chart 222

Name	M	Const.	Mag.	Type	Size	R.A.	Decl.	C	R	S	O	# Stars	B
Common					Notes								
NGC 6584		TEL	9.2	GC	7.9m	18h 18.6m	-52° 13.0'						B
					cB,cL,R,gmbM,rrr								
NGC 6652		SGR	8.9	GC	3.5m	18h 35.8m	-32° 59.0'						
					B,S,IE,rrr,st15								
NGC 6723		SGR	7.3	GC	11.0m	18h 59.6m	-36° 38.0'				O		
					vL,vIE,vgbM,rrr								
NGC 6726		CRA		DN	2m x 2m	19h 01.7m	-36° 53.0'				O		
					6,7 in F,pL neb - Complex neb region w var TY & R CrA invl								
NGC 6729		CRA		DN	25m x 20m	19h 01.9m	-36° 57.0'	C68					
					Var*(11...) w neb - P w NGC 6726-7								
NGC 6868		TEL	10.6	GAL	3.6m x 2.8m	20h 09.9m	-48° 23.0'						
					vB,S,R,pgvmbM								

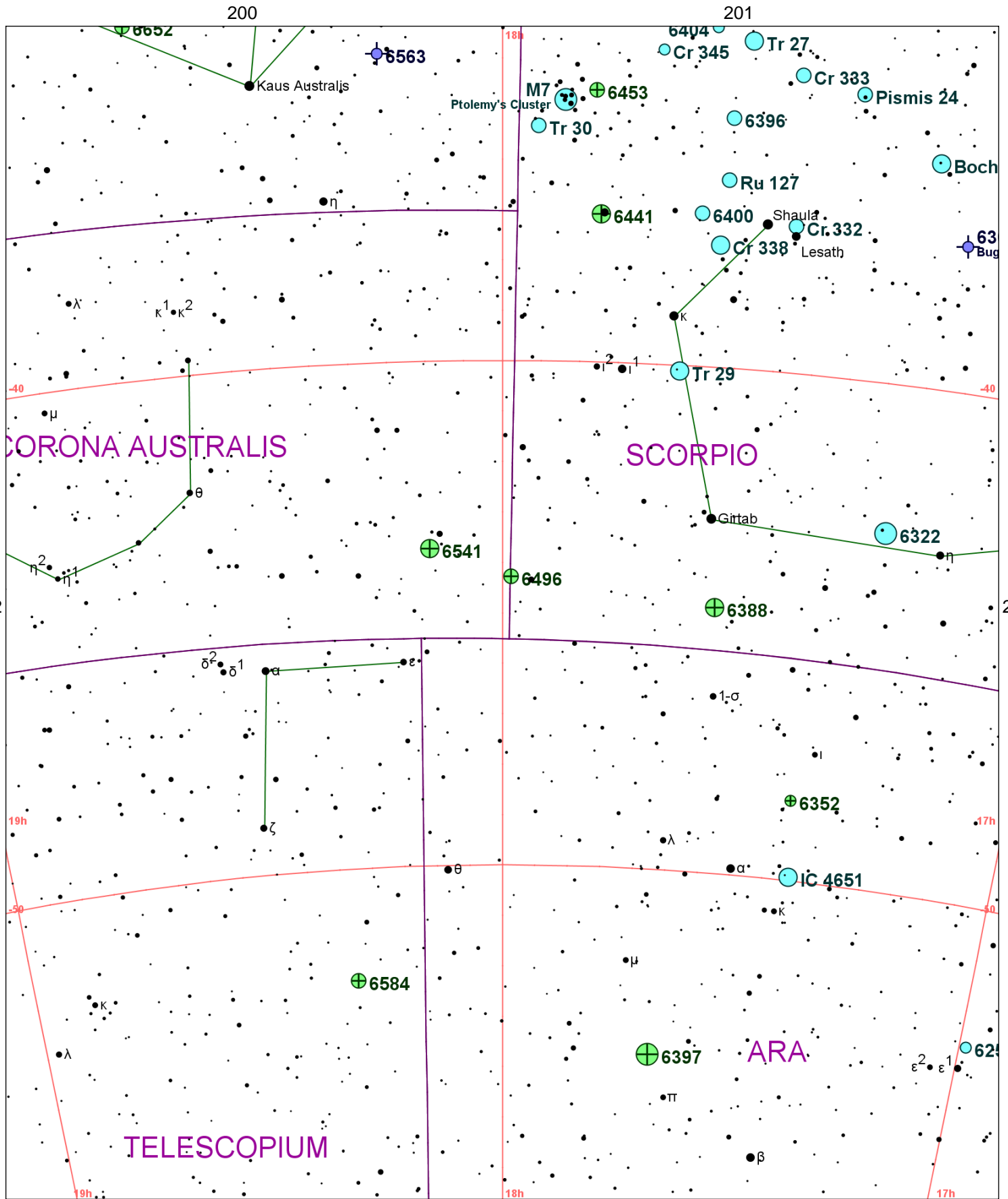
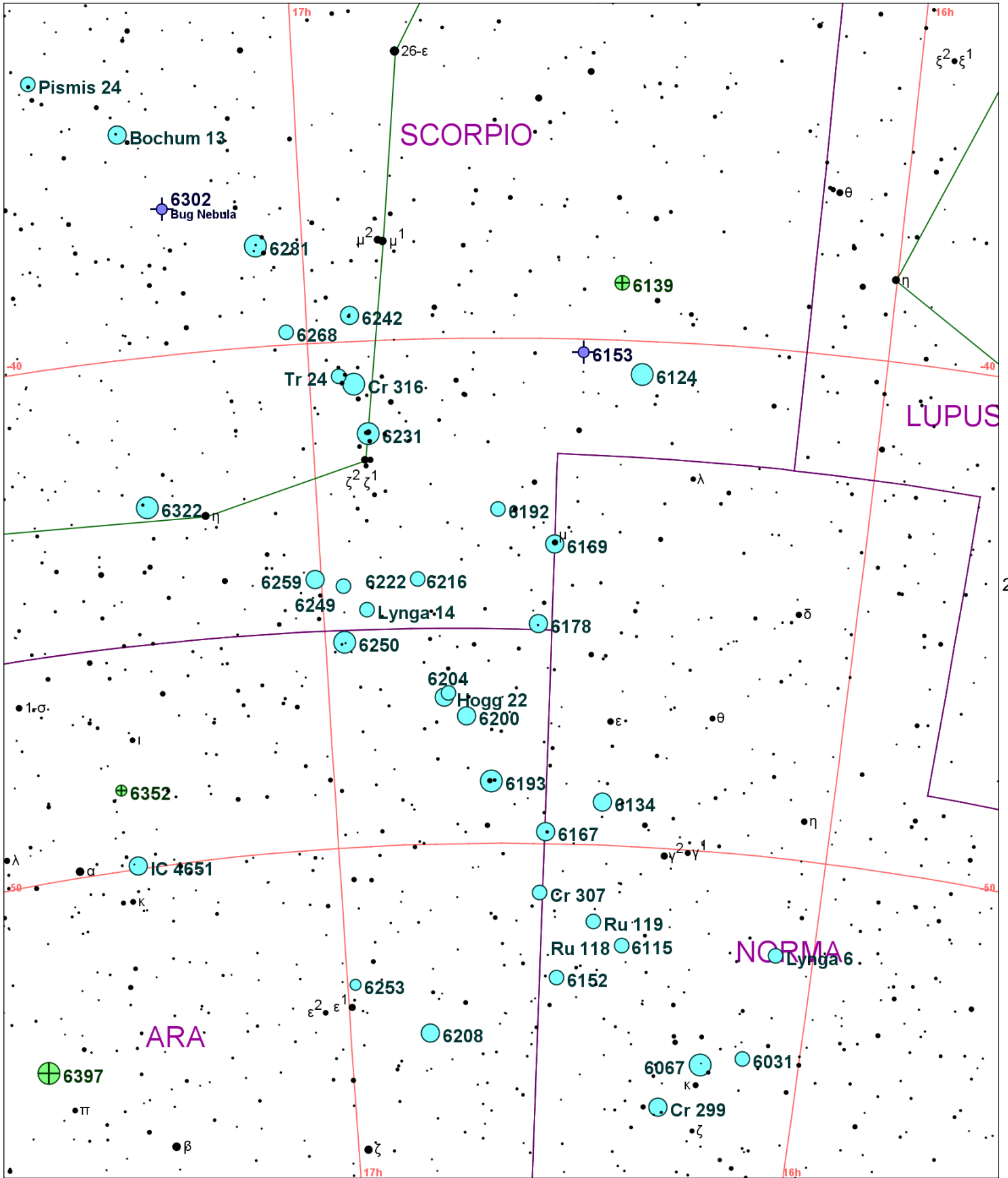


Chart 223													
Name	M	Const.	Mag.	Type	Size	R.A.	Decl.	C	R	S	O	# Stars	B
Common					Notes								
Bochum 13		SCO	7.2	OC		17h 17.3m	-35° 33.0'					35	
Cr 332		SCO	8.9	OC	10.0m	17h 30.8m	-37° 05.0'					12	
Cr 333		SCO	9.8	OC	5.0m	17h 31.3m	-34° 05.0'					30	
Cr 338		SCO	8.0	OC	25.0m	17h 38.2m	-37° 34.0'					40	
Cr 345		SCO	10.9	OC	6.0m	17h 44.6m	-33° 45.0'						
IC 4651		ARA	6.9	OC	10m	17h 24.8m	-49° 56.0'					80	B
					Cl,pC - Not much condensation--Hartung;70 * mags 10..14								
NGC 6253		ARA	10.2	OC	4m	16h 59.1m	-52° 43.0'					30	
					Cl,S,triangular,st13								
NGC 6302		SCO	12.8	PN	72s x 30s	17h 13.7m	-37° 06.0'	C69			O		
Bug Nebula					pB,E pf - aka Bipolar Nebula; much flattened figure 8 shape								
NGC 6322		SCO	6.0	OC	10.0m	17h 18.4m	-42° 56.0'					30	
					Cl,vL,pRi,IC								
NGC 6352		ARA	10.7	GC	7.1m	17h 25.5m	-48° 25.0'	C81			O		B
					pF,L - globular ESO 228-SC003								
NGC 6388		SCO	6.9	GC	8.7m	17h 36.3m	-44° 44.0'				O		
					vB,L,R,pg,psvmbM								
NGC 6396		SCO	8.5	OC	3.0m	17h 37.6m	-35° 02.0'					30	
					Cl,pL,iRi,IC								
NGC 6397		ARA	5.7	GC	25.7m	17h 40.7m	-53° 40.0'	C86			O		B
					B,vL,Ri,st 10.. - Poss nearest glob								
NGC 6400		SCO	8.8	OC	12m	17h 40.2m	-36° 57.0'					60	
					Cl,pL,pRi,iR,*9...10								
NGC 6404		SCO	10.6	OC	5.0m	17h 39.6m	-33° 15.0'					50	
					Cl,F,L,pRi,IC,*13..15								
NGC 6441		SCO	7.4	GC	7.8m	17h 50.2m	-37° 03.0'				O		
					vB,pL,R,vgmbM								
NGC 6453		SCO	9.9	GC	3.5m	17h 50.9m	-34° 36.0'						
					Cl,iR,pmbM,r								
NGC 6475	M7	SCO	3.3	OC	80.0m	17h 53.9m	-34° 48.0'				O	80	B
Ptolemy's Cluster					Cl,vB,pRi,IC,*7...12 - 80 members to 10th mag;Fine naked eye cluster								
NGC 6496		SCO	9.2	GC	6.9m	17h 59.0m	-44° 16.0'						
					neb+Cl,pL,mE,qvlbM								
NGC 6541		CRA	6.6	GC	13.1m	18h 08.0m	-43° 42.0'	C78			O		B
					B,R,eC,gbM,rrr - Stars mags 13...								
NGC 6563		SGR	13.0	PN	54s x 41s	18h 12.0m	-33° 52.0'				O		
					F,L,cE,hazy edge								
NGC 6584		TEL	9.2	GC	7.9m	18h 18.6m	-52° 13.0'						B
					cB,cL,R,gmbM,rrr								
NGC 6652		SGR	8.9	GC	3.5m	18h 35.8m	-32° 59.0'						
					B,S,IE,rrr,st15								
Pismis 24		SCO	9.6	OC	4.0m	17h 25.3m	-34° 21.0'					15	
Ru 127		SCO	8.8	OC	8.0m	17h 37.7m	-36° 16.0'					20	
Tr 27		SCO	6.7	OC	7.0m	17h 36.2m	-33° 29.0'					35	
					Extinction varies from 3 to 8 mags across face of cluster								
Tr 29		SCO	7.5	OC	9.0m	17h 41.6m	-40° 06.0'					30	
Tr 30		SCO	8.8	OC	10.0m	17h 56.5m	-35° 19.0'					80	
					F,pL,Irr - In field of M 7								

201

202

203



223

225

241

Chart 224													
Name	M	Const.	Mag.	Type	Size	R.A.	Decl.	C	R	S	O	# Stars	B
Common					Notes								
Bochum 13		SCO	7.2	OC		17h 17.3m	-35° 33.0'					35	
Cr 299		NOR	6.9	OC	20.0m	16h 18.4m	-55° 07.0'						
Cr 307		ARA	9.2	OC	6.0m	16h 35.2m	-50° 58.0'						
Cr 316		SCO	3.4	OC	105m	16h 55.5m	-40° 50.0'						
Hogg 22		ARA	6.7	OC	1.5m	16h 46.7m	-47° 06.0'					8	
IC 4651		ARA	6.9	OC	10m	17h 24.8m	-49° 56.0'					80	B
					Cl,pC - Not much condensation--Hartung;70 * mags 10..14								
Lynga 6		NOR	9.5	OC	5.0m	16h 04.8m	-51° 55.0'						
Lynga 14		SCO	9.7	OC	2.0m	16h 55.2m	-45° 19.0'					15	
NGC 6031		NOR	8.5	OC	2.0m	16h 07.6m	-54° 01.0'					20	
					Cl,S,mC,st11...14 - In Nor OB1?								
NGC 6067		NOR	5.6	OC	13.0m	16h 13.2m	-54° 13.0'	C89			O	100	B
					Cl,vB,vL,vRi,IC,*10... - Fine field								
NGC 6115		NOR	11.0	OC	3m	16h 24.4m	-51° 57.0'						
					Cl,eL,eRi								
NGC 6124		SCO	5.8	OC	29.0m	16h 25.3m	-40° 39.0'	C75			O	100	B
					Cl,B,L,pRi,ICM,*9..11								
NGC 6134		NOR	7.2	OC	7.0m	16h 27.8m	-49° 09.0'						B
					Cl,cL,pRi,ICM,st13..								
NGC 6139		SCO	9.2	GC	5.5m	16h 27.7m	-38° 51.0'						
					B,pL,R,psbM,rr								
NGC 6152		NOR	8.1	OC	25m	16h 32.8m	-52° 39.0'					70	B
					Cl,L,IC,st L								
NGC 6153		SCO	11.5	PN	25s	16h 31.5m	-40° 15.0'				O		
					Planetary,stellar								
NGC 6167		NOR	6.7	OC	8.0m	16h 34.6m	-49° 46.0'						B
					Cl,L,IC,iF								
NGC 6169		NOR	6.6	OC	12m	16h 34.1m	-44° 03.0'					40	
					Cl,Mu Normae inv - Mu Nor cluster. In Ara OB1								
NGC 6178		SCO	7.2	OC	4.0m	16h 35.8m	-45° 39.0'					12	
					Cl,B,S,st pL								
NGC 6192		SCO	8.5	OC	9m	16h 40.4m	-43° 22.0'					60	
					Cl,pL,pRi,iR,st11..14								
NGC 6193		ARA	5.2	OC	15.0m	16h 41.3m	-48° 46.0'	C82			O		
					Cl,vL,iRi,IC,F neb inv - In Ara OB1;30* mags 6...								
NGC 6200		ARA	7.4	OC	12.0m	16h 44.1m	-47° 28.0'					40	
					Cl,in Milky Way - In Ara OB2								
NGC 6204		ARA	8.2	OC	5.0m	16h 46.2m	-47° 01.0'					45	
					Cl,pRi,eICM,st11..12 - In Ara OB2								
NGC 6208		ARA	7.2	OC	18m	16h 49.5m	-53° 44.0'					60	B
					Cl,L,Ri,ICM,st9...12								
NGC 6216		SCO	10.1	OC	4.0m	16h 49.4m	-44° 44.0'					40	
					Cl,pS,pRi,pC,*12..15								
NGC 6222		SCO	10.0	OC	4m	16h 49.4m	-44° 44.0'						
					Cl,vL,vRi,lbM,*12..13								
NGC 6231		SCO	2.6	OC	15.0m	16h 54.2m	-41° 49.0'	C76			O		B
					Cl,B,cL,pRi,st10..13 - Table of Scorpius;If at dist of Pleiades 8 Bri *s =Sirius								
NGC 6242		SCO	6.4	OC	9.0m	16h 55.6m	-39° 28.0'				O		
					Cl,B,L,Ri,st8...11								
NGC 6249		SCO	8.2	OC	6.0m	16h 57.7m	-44° 49.0'					30	
					Cl,pRi,vIC,iF,st L&S								
NGC 6250		ARA	5.9	OC	10m	16h 57.9m	-45° 56.0'					60	
					Cl,L,iRi,IC,*8...12								
NGC 6253		ARA	10.2	OC	4m	16h 59.1m	-52° 43.0'					30	
					Cl,S,triangular,st13								
NGC 6259		SCO	8.0	OC	10.0m	17h 00.8m	-44° 39.0'					120	
					Cl,B,vL,vRi,st11...								

Chart 224													
Name	M	Const.	Mag.	Type	Size	R.A.	Decl.	C	R	S	O	# Stars	B
Common					Notes								
NGC 6268		SCO	9.5	OC	6.0m	17h 02.2m	-39° 44.0'						
					Cl,B,pL,cRi,st10...								
NGC 6281		SCO	5.4	OC	200m x 150m	17h 04.7m	-37° 59.0'						
					Cl,L,pRi,IC,st9...11								
NGC 6302		SCO	12.8	PN	72s x 30s	17h 13.7m	-37° 06.0'	C69			O		
Bug Nebula					pB,E pf - aka Bipolar Nebula; much flattened figure 8 shape								
NGC 6322		SCO	6.0	OC	10.0m	17h 18.4m	-42° 56.0'					30	
					Cl,vL,pRi,IC								
NGC 6352		ARA	10.7	GC	7.1m	17h 25.5m	-48° 25.0'	C81			O		B
					pF,L - globular ESO 228-SC003								
NGC 6397		ARA	5.7	GC	25.7m	17h 40.7m	-53° 40.0'	C86			O		B
					B,vL,Ri,st 10.. - Poss nearest glob								
Pismis 24		SCO	9.6	OC	4.0m	17h 25.3m	-34° 21.0'					15	
Ru 118		NOR	9.8	OC	3.4m	16h 24.6m	-51° 58.0'						
Ru 119		NOR	8.8	OC	8.0m	16h 28.3m	-51° 31.0'						
Tr 24		SCO	8.6	OC	60.0m	16h 57.0m	-40° 40.0'				O		
					vvL,B,E,Irr - 200 * in rich Milky field;nebula IC 4628 invl								