

Chart 209													
Name	M	Const.	Mag.	Type	Size	R.A.	Decl.	C	R	S	O	# Stars	B
Common					Notes								
NGC 2663		PYX	10.9	GAL	3.5m x 2.4m	8h 45.1m	-33° 48.0'						
					pF,pS,IE								
NGC 2784		HYA	10.2	GAL	5.7m x 2.5m	9h 12.3m	-24° 10.0'				O		
					B,L,mE 64 deg,gmbM - H I 59								
NGC 2818		PYX	8.2	OC	0.6m	9h 16.0m	-36° 38.0'				O	40	B
					30 F* mags 12...								
NGC 2835		HYA	10.5	GAL	6.3m x 4.2m	9h 17.9m	-22° 21.0'						
					F,*10 inv f,bet 2 st 9 - Fine multi arm spiral								
NGC 2986		HYA	10.8	GAL	3.5m x 3m	9h 44.3m	-21° 17.0'						
					pB,pS,iR,mbM - H II 311								
NGC 2997		ANT	9.4	GAL	9.2m x 6.6m	9h 45.6m	-31° 11.0'				O		B
					! vF,vL,vqvsbMN 4",19s.5 d - H V 50								
NGC 3109		HYA	9.9	GAL	19.7m x 3.4m	10h 03.1m	-26° 10.0'				O		
					cF,vL,vmE 82,lbM								
NGC 3132		VEL	8.2	PN	84s x 53s	10h 07.0m	-40° 26.0'	C74			O		
Eight-Burst Nebula					!! Planetary,vB,vL,IE *9m - actual central star is 15.8 mag								

Chart 210													
Name	M	Const.	Mag.	Type	Size	R.A.	Decl.	C	R	S	O	# Stars	B
Common					Notes								
Cr 185		PUP	7.8	OC	9.0m	8h 22.5m	-36° 10.0'					35	
					13'-pF,pS,nC,nRi 18* at 135X								
Cr 187		PUP	9.6	OC	7.0m	8h 24.2m	-29° 09.0'					20	
Cr 196		PYX	10.5	OC	5.0m	8h 45.0m	-31° 38.0'					12	
Cr 197		VEL	6.7	OC	17.0m	8h 44.7m	-41° 22.0'					40	
Haffner 15		PUP	9.4	OC	3.5m	7h 45.3m	-32° 47.0'					35	
					13'-pB,pS,vC,nRi at 165X								
Haffner 16		PUP	10.0	OC	1.1m	7h 50.3m	-25° 27.0'					30	
					13'-pB,S,pRi,vC; 19* mags 11... at 165X								
Haffner 18		PUP	9.3	OC	1.0m	7h 53.3m	-25° 54.0'					25	
Haffner 19		PUP	9.4	OC	1.8m	7h 52.7m	-26° 15.0'					30	
Haffner 20		PUP	11.0	OC	1.8m	7h 56.3m	-30° 24.0'					20	
					13'-F,pS,C; 6* mags 12... at 135X								
Haffner 21		PUP	10.3	OC	1.1m	8h 01.2m	-27° 10.0'					20	
					13'-pF,S,nRi,pC; 12* at 165X - Most of cluster 15 mag and less								
NGC 2451		PUP	2.8	OC	50m	7h 45.3m	-37° 58.0'				O	40	B
					Cl,vL,vIC,one *4.5								
NGC 2467		PUP	7.1	DN	15.0m	7h 52.5m	-26° 26.0'				O	50	
					pB,vL,R,er,*8m - H IV 22;Scattered stars 8..12 w vF haze of nebulosity;in PUP OB1								
NGC 2477		PUP	5.8	OC	27.0m	7h 52.2m	-38° 32.0'	C71			O	200	B
					!,Cl,B,Ri,L,IC,*12 - 300 * to 12 mag;Shapley--richest of OPNCL								
NGC 2482		PUP	7.3	OC	12.0m	7h 55.2m	-24° 15.0'					40	
					Cl,L,cRi,vIC - H VII 10								
NGC 2483		PUP	7.6	OC	10.0m	7h 55.6m	-27° 53.0'					30	
					Cl,L,IC								
NGC 2489		PUP	7.9	OC	8.0m	7h 56.3m	-30° 04.0'					45	
					Cl,pL,cRi,pC,* 11..13 - H VII 23								
NGC 2509		PUP	9.3	OC	8.0m	8h 00.8m	-19° 03.0'					70	
					Cl,B,pRi,IC,st S - H VIII 1								
NGC 2520		PUP	6.5	OC	22m	8h 05.0m	-28° 09.0'						
					Cl,B,pRi,pC								
NGC 2527		PUP	6.5	OC	22.0m	8h 05.0m	-28° 09.0'				O	40	B
					Cl,vL,pRi,IC,*10..15 - H VIII 30								
NGC 2533		PUP	7.6	OC	3.5m	8h 07.1m	-29° 53.0'					60	
					Cl,pL,Ri,C,*9,13..14								
NGC 2546		PUP	6.3	OC	41.0m	8h 12.3m	-37° 36.0'				O	40	B
					Cl,B,L,IC,IE,*9..12								
NGC 2559		PUP	10.9	GAL	3.7m x 1.7m	8h 17.1m	-27° 27.0'						
					F,pL,gmbM,am 60*								
NGC 2566		PUP	11.0	GAL	3.4m x 2.3m	8h 18.8m	-25° 30.0'						
					vF,cL,eR,vS neg or neb *11 w *12 close								
NGC 2567		PUP	7.4	OC	10.0m	8h 18.5m	-30° 39.0'					40	
					Cl,pL,pRi,IC,iR,*11. - H VII 64								
NGC 2568		PUP	10.0	OC		8h 18.3m	-37° 06.0'						
					vF,pL,F* inv								
NGC 2571		PUP	7.0	OC	13.0m	8h 18.9m	-29° 45.0'					30	B
					Cl,vL,cRi,IC,st9 - H VI 39								
NGC 2579		PUP	7.5	DN	10.0m	8h 20.9m	-36° 13.0'					20	
					D* in pS neb,am 70*								
NGC 2580		PUP	9.7	OC	8.0m	8h 21.5m	-30° 19.0'					50	
					Cl,cL,pRi,pC,R,st12								
NGC 2587		PUP	9.2	OC	9.0m	8h 23.4m	-29° 31.0'					40	
					Cl,pmCM,iF,st9..13								
NGC 2613		PYX	10.3	GAL	7.1m x 1.6m	8h 33.4m	-22° 58.0'						
					cB,L,vmE 110 deg - H II 266;1.2 deg W from D* Burnham 208;Nearly edge-on								
NGC 2627		PYX	8.4	OC	11.0m	8h 37.2m	-29° 57.0'				O	60	B
					Cl,cL,pRi,pC,*11..13 - H VII 63								

Chart 210													
Name	M	Const.	Mag.	Type	Size	R.A.	Decl.	C	R	S	O	# Stars	B
Common					Notes								
NGC 2658		PYX	9.2	OC	10m	8h 43.5m	-32° 39.0'					80	
					Cl,pS,IRi,IC,IF,st12-13								
NGC 2663		PYX	10.9	GAL	3.5m x 2.4m	8h 45.1m	-33° 48.0'						
					pF,pS,IE								
NGC 2784		HYA	10.2	GAL	5.7m x 2.5m	9h 12.3m	-24° 10.0'				O		
					B,L,mE 64 deg,gmbM - H I 59								
NGC 2818		PYX	8.2	OC	0.6m	9h 16.0m	-36° 38.0'				O	40	B
					30 F* mags 12...								
PK 254+ 5.1		PYX	11.0	PN	11s x 6s	8h 40.7m	-32° 23.0'						
Pismis 1		PUP	10.7	OC	4.6m	8h 17.8m	-37° 05.0'					30	
Pismis 5		VEL	9.9	OC	2.0m	8h 37.5m	-39° 40.0'					10	
Ru 36		PUP	9.6	OC	4.0m	7h 48.5m	-26° 18.0'					30	
Ru 44		PUP	7.2	OC	5.0m	7h 59.0m	-28° 35.0'					40	
					13"-B,L,Ri at 100X; 52* ; seen in 11X80 findr - About 100 O or B * of 12 mag and less								
Ru 46		PUP	9.1	OC	2.0m	8h 02.1m	-19° 28.0'					15	
Ru 47		PUP	9.6	OC	5.0m	8h 02.3m	-31° 06.0'					20	
Ru 49		PUP	9.6	OC	2.5m	8h 03.1m	-26° 47.0'					10	
Ru 55		PUP	7.8	OC	17.0m	8h 12.3m	-32° 36.0'					12	
Ru 59		PUP	9.0	OC	5.0m	8h 19.1m	-34° 27.0'					20	
Tr 9		PUP	8.7	OC	6.0m	7h 55.3m	-25° 56.0'					20	
					13"-pB,pL,nRi,nC at 100X; 22* mags 11...13 - 40 * in clumpy groups								

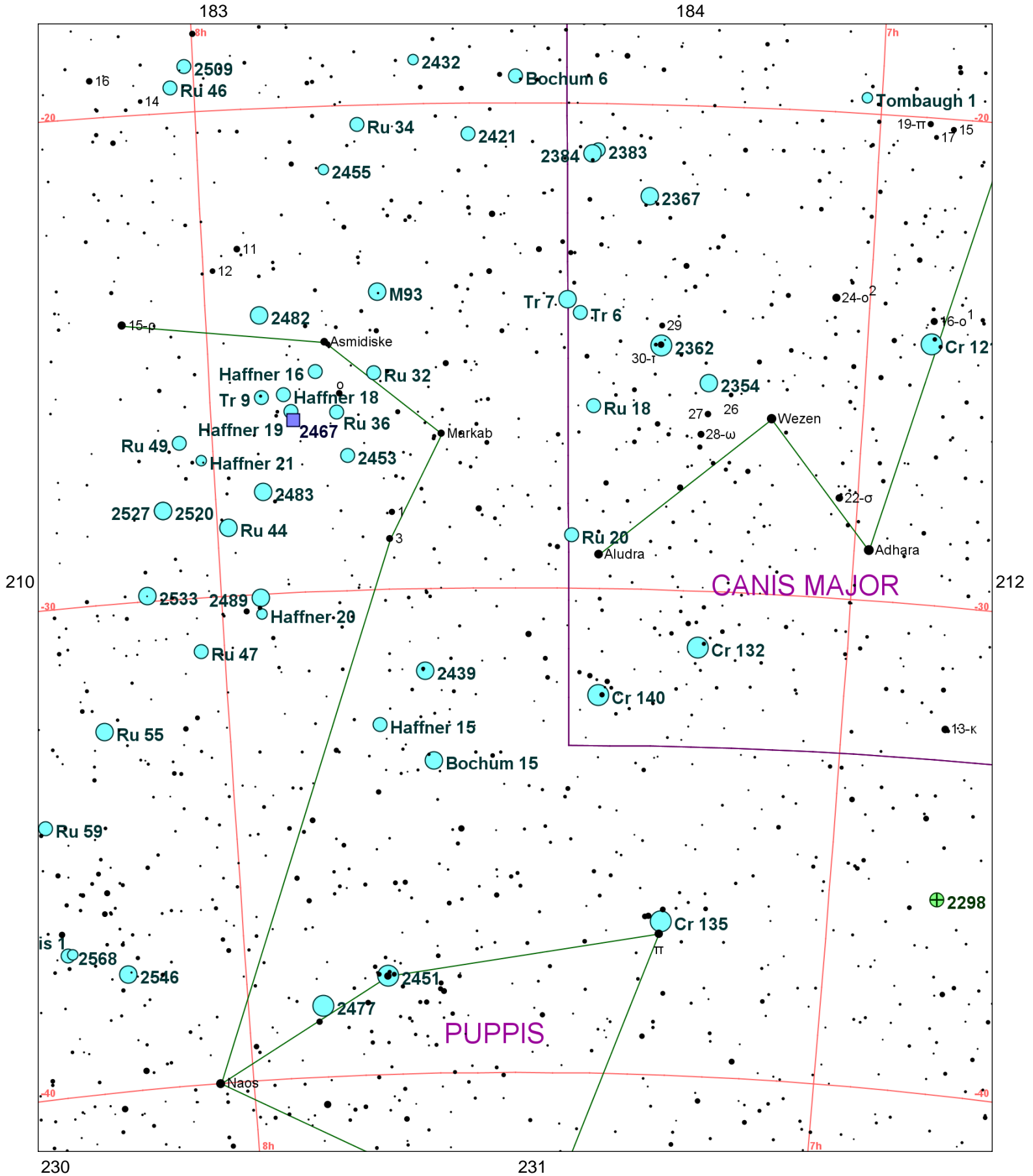


Chart 211													
Name	M	Const.	Mag.	Type	Size	R.A.	Decl.	C	R	S	O	# Stars	B
Common					Notes								
Bochum 6		PUP	9.9	OC		7h 32.0m	-19° 26.0'					40	
					13'-pF,pS; 15* mags 11... at 135X								
Bochum 15		PUP	6.3	OC		7h 40.1m	-33° 33.0'					12	
					13'-F,pS,nRi,C; 6* at 165X								
Cr 121		CMA	2.6	OC	50.0m	6h 54.2m	-24° 38.0'					20	
Cr 132		CMA	3.6	OC	95m	7h 14.4m	-31° 10.0'					25	
Cr 135		PUP	2.1	OC	50.0m	7h 17.0m	-36° 50.0'						
					13'-vB,vvL,nC,scattered 38* at 60X								
Cr 140		CMA	3.5	OC	42.0m	7h 23.9m	-32° 12.0'					30	
					10X50-vB,vL,irR, 18* - The Tuft in the tail of the dog;visible naked eye								
Haffner 15		PUP	9.4	OC	3.5m	7h 45.3m	-32° 47.0'					35	
					13'-pB,pS,vC,nRi at 165X								
Haffner 16		PUP	10.0	OC	1.1m	7h 50.3m	-25° 27.0'					30	
					13'-pB,S,pRi,vC; 19* mags 11... at 165X								
Haffner 18		PUP	9.3	OC	1.0m	7h 53.3m	-25° 54.0'					25	
Haffner 19		PUP	9.4	OC	1.8m	7h 52.7m	-26° 15.0'					30	
Haffner 20		PUP	11.0	OC	1.8m	7h 56.3m	-30° 24.0'					20	
					13'-F,pS,C; 6* mags 12... at 135X								
Haffner 21		PUP	10.3	OC	1.1m	8h 01.2m	-27° 10.0'					20	
					13'-pF,S,nRi,pC; 12* at 165X - Most of cluster 15 mag and less								
NGC 2298		PUP	9.4	GC	6.8m	6h 49.0m	-36° 00.0'						
					B,pL,ir,gbM,rr - Stars eF								
NGC 2354		CMA	6.5	OC	20.0m	7h 14.3m	-25° 42.0'				O	100	
					Cl,cRi,IC - H VII 16								
NGC 2362		CMA	4.1	OC	8.0m	7h 18.7m	-24° 57.0'	C64			O	60	B
					Cl,pL,Ri,(30 CMA) - H VII 17;40 * to 13 mag surround Tau Cma;sev pairs								
NGC 2367		CMA	7.9	OC	3.5m	7h 20.1m	-21° 53.0'					30	
					Cl,S,P,IC - H VIII 28								
NGC 2383		CMA	8.4	OC	6.0m	7h 24.7m	-20° 57.0'				O	40	
					Cl,pS,pmC,st12 - Near cluster NGC 2384								
NGC 2384		CMA	7.4	OC	2.5m	7h 25.2m	-21° 01.0'					15	
					Cl,IC,bifid,** - Near cluster NGC 2383								
NGC 2421		PUP	8.3	OC	10.0m	7h 36.2m	-20° 37.0'					70	
					Cl,L,cRi,*11...13 - H VII 67								
NGC 2432		PUP	10.2	OC	8.0m	7h 40.9m	-19° 05.0'					50	
					Cl,pL,pC,E 0 deg,st L & S - H VI 36								
NGC 2439		PUP	6.9	OC	10.0m	7h 40.8m	-31° 42.0'				O	80	
					Cl,B,pRi,pL,IC,* 9,12...14								
NGC 2447	M93	PUP	6.2	OC	22.0m	7h 44.5m	-23° 51.0'				O	80	B
					Cl,L,pRi,IC,st8...13 - 63 members to 13 mag;wedge shaped center								
NGC 2451		PUP	2.8	OC	50m	7h 45.3m	-37° 58.0'				O	40	B
					Cl,vvL,vIC,one *4.5								
NGC 2453		PUP	8.3	OC	5.0m	7h 47.6m	-27° 12.0'					30	
					Cl,S,pRi,pC								
NGC 2455		PUP	10.2	OC	8.0m	7h 49.0m	-21° 18.0'					50	
					Cl,cL,pRi,IC,st12								
NGC 2467		PUP	7.1	DN	15.0m	7h 52.5m	-26° 26.0'				O	50	
					pB,vL,R,er,*8m - H IV 22;Scattered stars 8..12 w vF haze of nebulosity;in PUP OB1								
NGC 2477		PUP	5.8	OC	27.0m	7h 52.2m	-38° 32.0'	C71			O	200	B
					!,Cl,B,Ri,L,IC,*12 - 300 * to 12 mag;Shapley--richest of OPNCL								
NGC 2482		PUP	7.3	OC	12.0m	7h 55.2m	-24° 15.0'					40	
					Cl,L,cRi,vIC - H VII 10								
NGC 2483		PUP	7.6	OC	10.0m	7h 55.6m	-27° 53.0'					30	
					Cl,L,IC								
NGC 2489		PUP	7.9	OC	8.0m	7h 56.3m	-30° 04.0'					45	
					Cl,pL,cRi,pC,* 11..13 - H VII 23								
NGC 2509		PUP	9.3	OC	8.0m	8h 00.8m	-19° 03.0'					70	

Chart 211													
Name	M	Const.	Mag.	Type	Size	R.A.	Decl.	C	R	S	O	# Stars	B
Common					Notes								
					Cl,B,pRi,IC,st S - H VIII 1								
NGC 2520		PUP	6.5	OC	22m	8h 05.0m	-28° 09.0'						
					Cl,B,pRi,pC								
NGC 2527		PUP	6.5	OC	22.0m	8h 05.0m	-28° 09.0'				O	40	B
					Cl,vL,pRi,IC,*10..15 - H VIII 30								
NGC 2533		PUP	7.6	OC	3.5m	8h 07.1m	-29° 53.0'					60	
					Cl,pL,Ri,C,*9,13..14								
NGC 2546		PUP	6.3	OC	41.0m	8h 12.3m	-37° 36.0'				O	40	B
					Cl,B,L,IC,IE,*9...12								
NGC 2568		PUP	10.0	OC		8h 18.3m	-37° 06.0'						
					vF,pL,F* inv								
Pismis 1		PUP	10.7	OC	4.6m	8h 17.8m	-37° 05.0'					30	
Ru 18		CMA	9.4	OC	4.0m	7h 24.8m	-26° 13.0'					40	
Ru 20		CMA	9.5	OC	10.0m	7h 26.7m	-28° 53.0'					30	
Ru 32		PUP	8.4	OC	6.0m	7h 45.0m	-25° 31.0'					30	
					13"-pB,pL,nRi,nC at 135X; 21* mags 11...								
Ru 34		PUP	9.5	OC	4.0m	7h 45.9m	-20° 23.0'					35	
Ru 36		PUP	9.6	OC	4.0m	7h 48.5m	-26° 18.0'					30	
Ru 44		PUP	7.2	OC	5.0m	7h 59.0m	-28° 35.0'					40	
					13"-B,L,Ri at 100X; 52* ; seen in 11X80 findr - About 100 O or B * of 12 mag and less								
Ru 46		PUP	9.1	OC	2.0m	8h 02.1m	-19° 28.0'					15	
Ru 47		PUP	9.6	OC	5.0m	8h 02.3m	-31° 06.0'					20	
Ru 49		PUP	9.6	OC	2.5m	8h 03.1m	-26° 47.0'					10	
Ru 55		PUP	7.8	OC	17.0m	8h 12.3m	-32° 36.0'					12	
Ru 59		PUP	9.0	OC	5.0m	8h 19.1m	-34° 27.0'					20	
Tombaugh 1		CMA	10.5	OC	5.0m	7h 01.3m	-19° 40.0'					45	
Tr 6		CMA	10.0	OC	6.0m	7h 26.1m	-24° 18.0'						
					13"-pF,pL,sRi,sC at 100X; 16* and fuzzy back								
Tr 7		PUP	7.9	OC	5.0m	7h 27.3m	-24° 02.0'					30	
					13"-pF,pS,nRi,sC at 100X; 17*								
Tr 9		PUP	8.7	OC	6.0m	7h 55.3m	-25° 56.0'					20	
					13"-pB,pL,nRi,nC at 100X; 22* mags 11...13 - 40 * in clumpy groups								

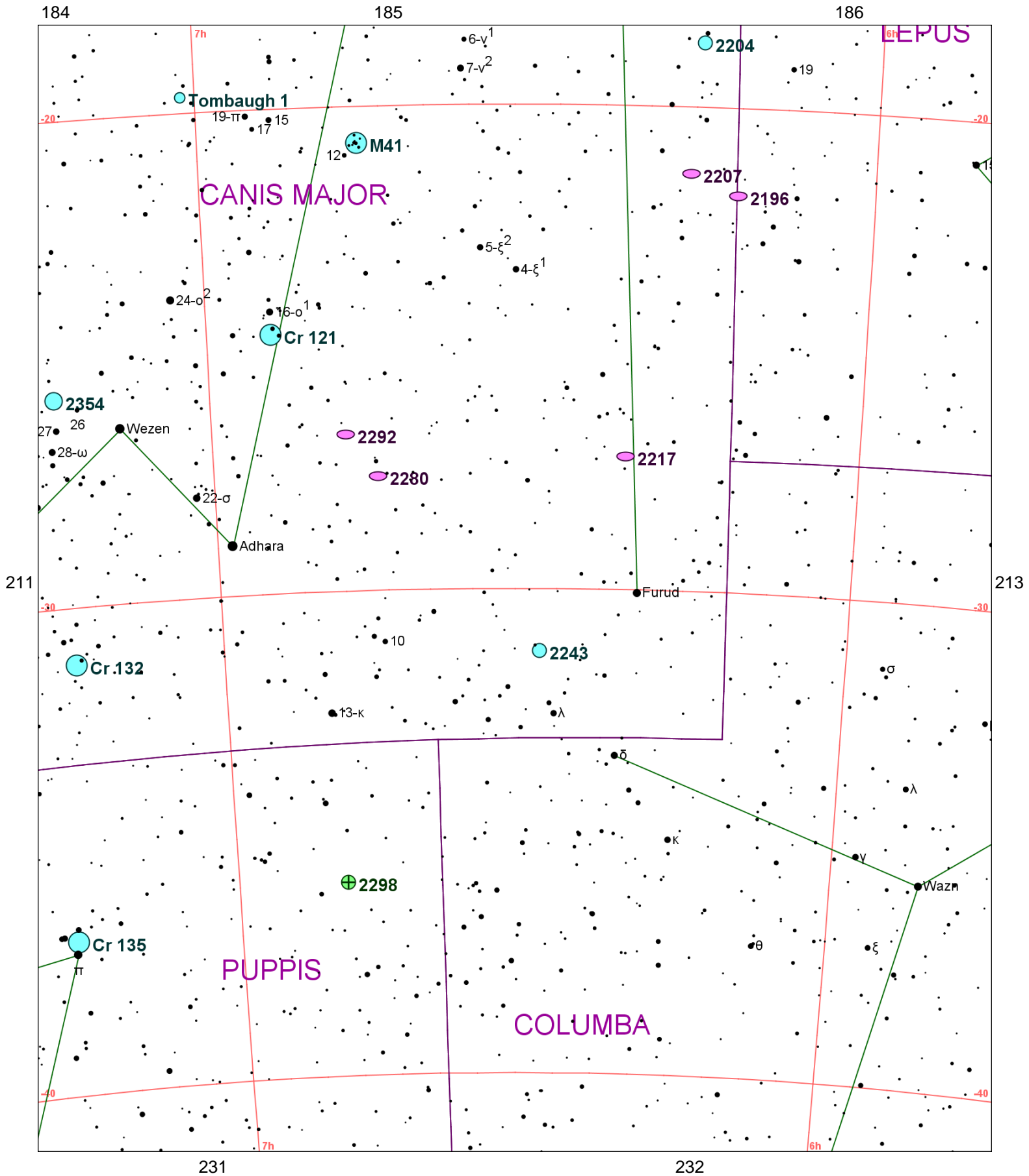


Chart 212

Name	M	Const.	Mag.	Type	Size	R.A.	Decl.	C	R	S	O	# Stars	B
Common					Notes								
Cr 121		CMA	2.6	OC	50.0m	6h 54.2m	-24° 38.0'					20	
Cr 132		CMA	3.6	OC	95m	7h 14.4m	-31° 10.0'					25	
Cr 135		PUP	2.1	OC	50.0m	7h 17.0m	-36° 50.0'						
					13"-vB,vvL,nC,scattered 38* at 60X								
NGC 2196		LEP	11.0	GAL	2.8m x 2.2m	6h 12.2m	-21° 48.0'						
					pF,pS,vIE,pmbM,st nr - H II 265								
NGC 2204		CMA	8.6	OC	13.0m	6h 15.5m	-18° 40.0'					80	
					Cl,L,pRi,IC - H VII 13;About 20 F *								
NGC 2207		CMA	10.8	GAL	4.2m x 2.6m	6h 16.4m	-21° 22.0'						
					pB,pL,mE87,pslbMRN,biN,ring surrounding - Double galaxy or interacting pair								
NGC 2217		CMA	10.7	GAL	4.7m x 4.3m	6h 21.7m	-27° 14.0'						
					vB,S,R,psmbM,r								
NGC 2243		CMA	9.4	OC	5.0m	6h 29.6m	-31° 17.0'					100	
					pB,cL,R,vglbM								
NGC 2280		CMA	10.3	GAL	6.6m x 3.2m	6h 44.8m	-27° 38.0'						
					pF,pL,IE,gbM								
NGC 2287	M41	CMA	4.5	OC	38.0m	6h 46.0m	-20° 45.0'				O	80	B
					Cl,vL,B,IC,st 8... - 150 members to 13 mag;orange * near center								
NGC 2292		CMA	10.8	GAL	4m x 3.5m	6h 47.7m	-26° 45.0'						
					eF,R,gbM,P w 2293,am st								
NGC 2298		PUP	9.4	GC	6.8m	6h 49.0m	-36° 00.0'						
					B,pL,iR,gbM,rr - Stars eF								
NGC 2354		CMA	6.5	OC	20.0m	7h 14.3m	-25° 42.0'				O	100	
					Cl,cRi,IC - H VII 16								
Tombaugh 1		CMA	10.5	OC	5.0m	7h 01.3m	-19° 40.0'					45	

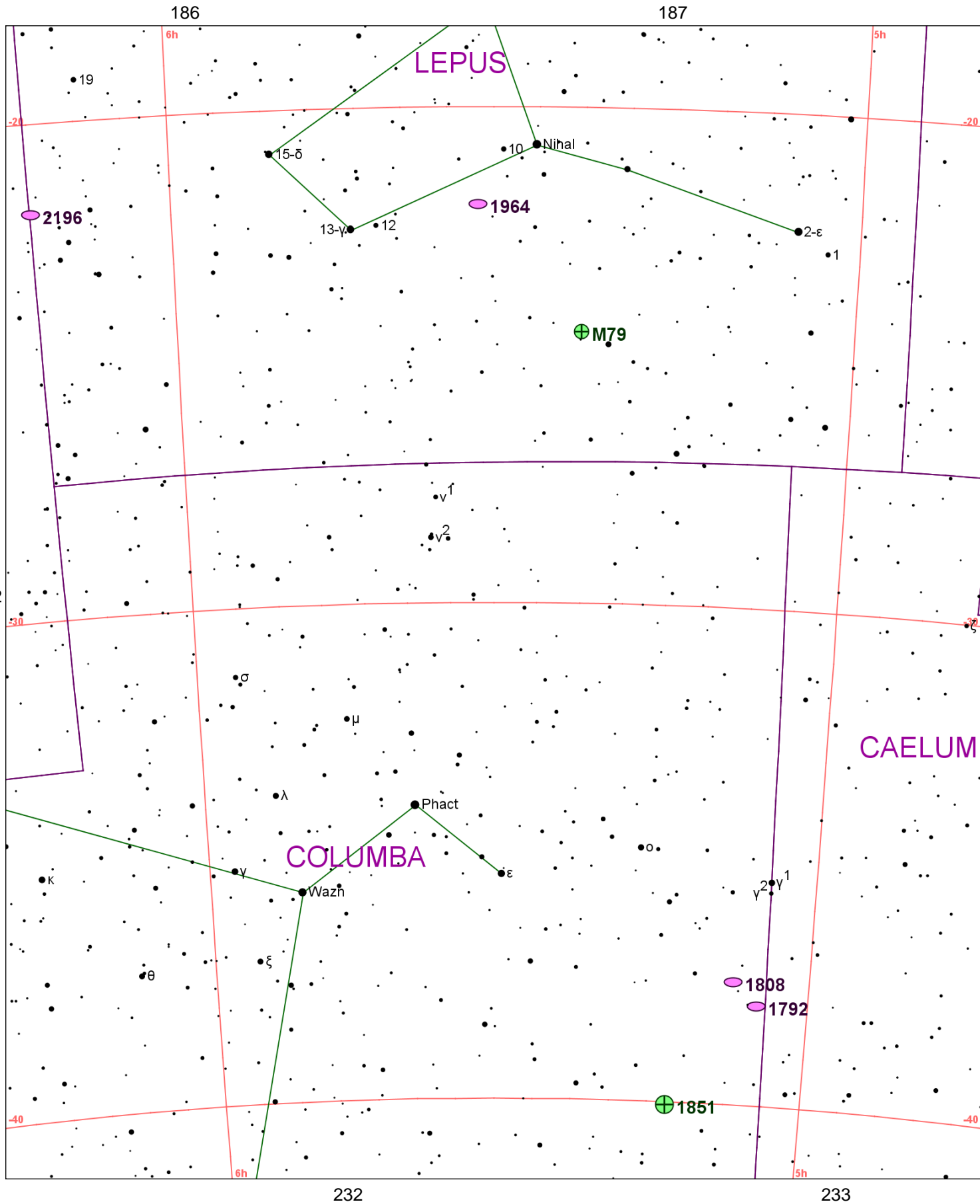


Chart 213

Name	M	Const.	Mag.	Type	Size	R.A.	Decl.	C	R	S	O	# Stars	B
Common					Notes								
NGC 1792		COL	10.2	GAL	5.6m x 2.9m	5h 05.2m	-37° 59.0'				O		
					vB,vL,mE314,glbM,rr								
NGC 1808		COL	9.9	GAL	6.3m x 4.3m	5h 07.7m	-37° 31.0'				O		
					B,L,E,psbM - F outer arms								
NGC 1851		COL	7.3	GC	11m	5h 14.1m	-40° 03.0'	C73			O		B
					!vB,vL,R,vsvvbM,rrr - X-ray source;vRi w F*								
NGC 1904	M79	LEP	8.4	GC	7.8m	5h 24.2m	-24° 31.0'				O		B
					pL,eRi,eC,rrr - Stars vF								
NGC 1964		LEP	10.8	GAL	5.5m x 2.1m	5h 33.4m	-21° 57.0'						
					F,L,R,vsvmbM,*12,3 st inv - H IV 21								
NGC 2196		LEP	11.0	GAL	2.8m x 2.2m	6h 12.2m	-21° 48.0'						
					pF,pS,vIE,pmbM,st nr - H II 265								

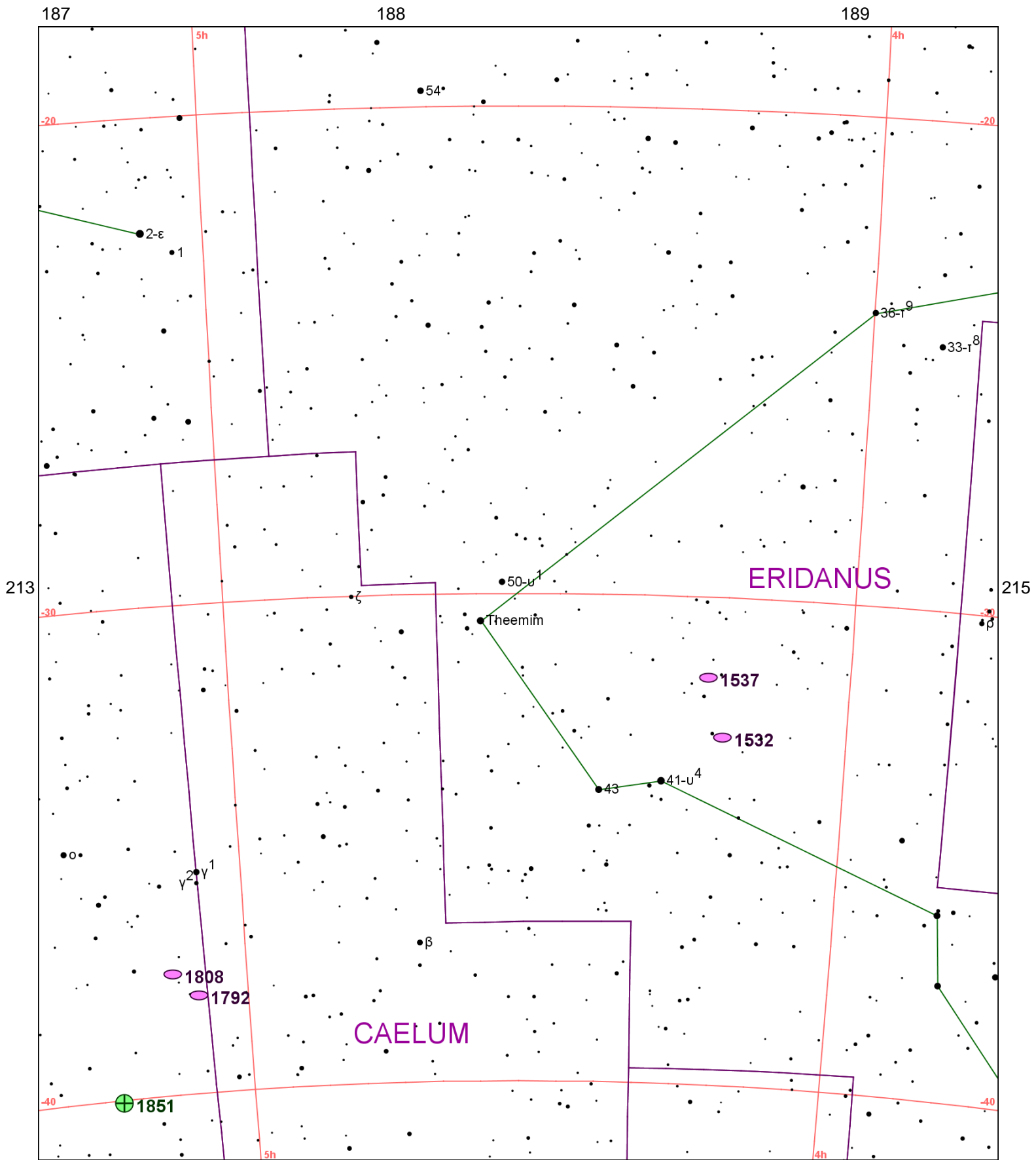


Chart 214

Name	M	Const.	Mag.	Type	Size	R.A.	Decl.	C	R	S	O	# Stars	B
Common					Notes								
NGC 1532		ERI	9.9	GAL	11.6m x 3.4m	4h 12.1m	-32° 52.0'				O		
B,vL,vmE32,psmbM - NGC 1531 np 2';Nearly edge-on													
NGC 1537		ERI	10.6	GAL	3.9m x 2.6m	4h 13.7m	-31° 39.0'						
vB,pS,IE,psvmbM													
NGC 1792		COL	10.2	GAL	5.6m x 2.9m	5h 05.2m	-37° 59.0'				O		
vB,vL,mE314,glbM,rr													
NGC 1808		COL	9.9	GAL	6.3m x 4.3m	5h 07.7m	-37° 31.0'				O		
B,L,E,psbM - F outer arms													
NGC 1851		COL	7.3	GC	11m	5h 14.1m	-40° 03.0'	C73			O		B
!vB,vL,R,vsvbm,rrr - X-ray source;vRi w F*													

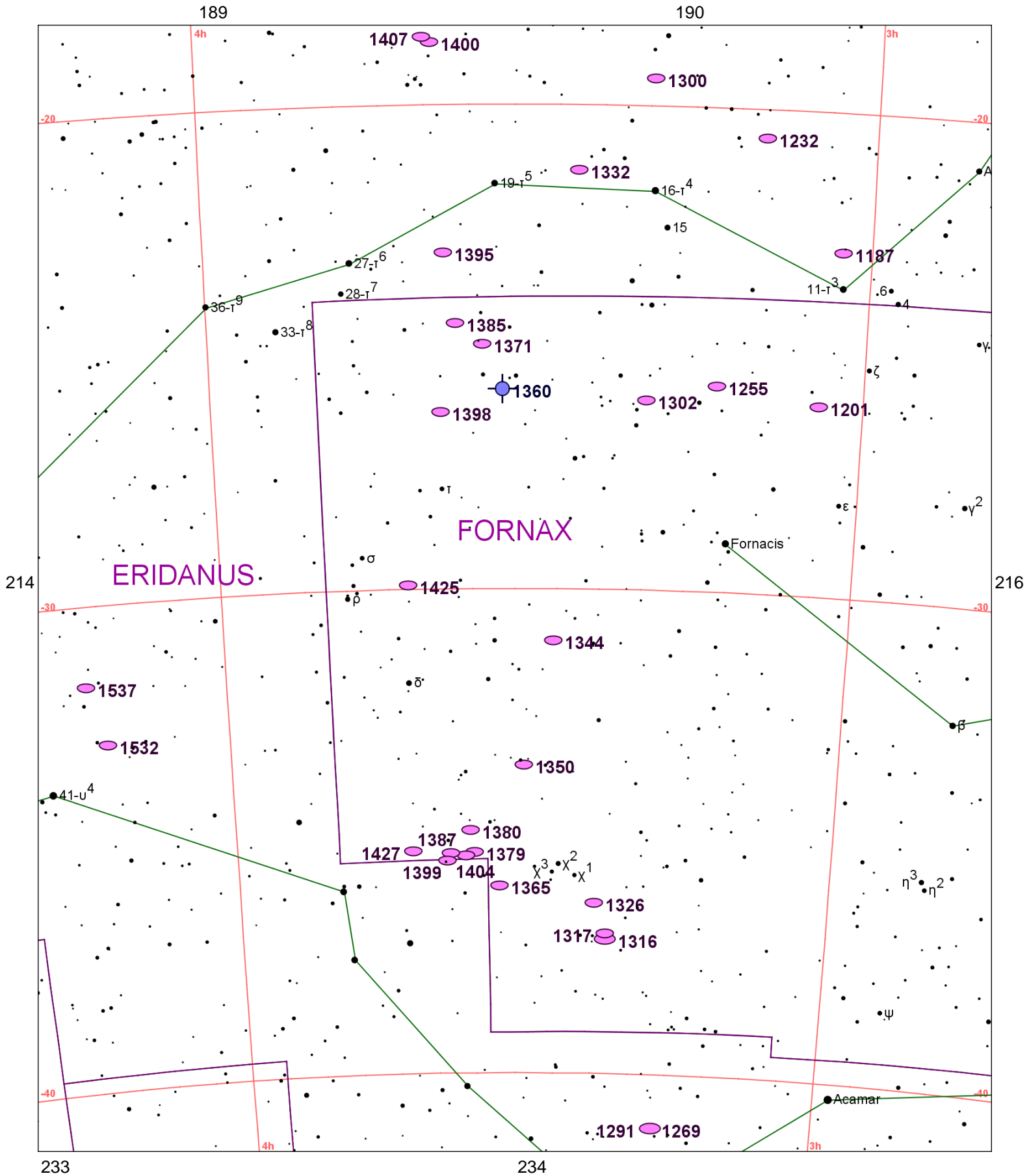


Chart 215

Name	M	Const.	Mag.	Type	Size	R.A.	Decl.	C	R	S	O	# Stars	B
Common					Notes								
NGC 1187		ERI	10.8	GAL	5.6m x 3.8m	3h 02.6m	-22° 52.0'						
					pF,cL,pmE,gbM*16,r - H III 245;Multi arm spiral								
NGC 1201		FOR	10.7	GAL	3.3m x 1.9m	3h 04.1m	-26° 04.0'				O		
					cB,pS,vIE,r,S* nr - H I 109								
NGC 1232		ERI	9.9	GAL	7.1m x 6.3m	3h 09.8m	-20° 35.0'		R21	S51	O		B
					pB,cL,R,gbM,r - H II 258;Excellent face-on spiral								
NGC 1255		FOR	10.9	GAL	4.2m x 2.7m	3h 13.5m	-25° 44.0'						
					F,pL,F* close p								
NGC 1269		ERI	9.4	GAL	9.7m x 8.4m	3h 17.3m	-41° 06.0'						
					vB,R,gmbM								
NGC 1291		ERI	8.5	GAL	9.7m x 8.4m	3h 17.3m	-41° 06.0'				O		
					vB,pL,R,mbM,er - comp 2;2;PA138;UGC 2666								
NGC 1300		ERI	10.4	GAL	5.9m x 4.1m	3h 19.7m	-19° 25.0'				O		
					cB,vL,vmE,psvmbM								
NGC 1302		FOR	10.7	GAL	4.1m x 3.7m	3h 19.9m	-26° 04.0'						
					S,R,psvmbM,*9 np 1'								
NGC 1316		FOR	8.5	GAL	11.2m x 7.7m	3h 22.7m	-37° 13.0'				O		
					vB,cL,vIE,vsmbMN - Fornax Galaxy Cluster member								
NGC 1317		FOR	11.0	GAL	2.8m x 2.4m	3h 22.7m	-37° 06.0'						
					pB,pS,psbM - Fornax Galaxy Cluster member								
NGC 1326		FOR	10.5	GAL	4.3m x 2.9m	3h 23.9m	-36° 28.0'						
					pS,vsmbMN - Fornax Galaxy Cluster member								
NGC 1332		ERI	10.3	GAL	4m x 1.5m	3h 26.3m	-21° 20.0'				O		
					vB,S,E114,smbMN - H I 60								
NGC 1344		FOR	10.4	GAL	6.1m x 3.8m	3h 28.3m	-31° 04.0'						
					cB,pL,iR,vgbM - H I 257								
NGC 1350		FOR	10.3	GAL	5.4m x 2.9m	3h 31.1m	-33° 38.0'				O		
					B,L,mE,vmbMRN - Fornax Galaxy Cluster member								
NGC 1360		FOR	9.4	PN	360s x 270s	3h 33.2m	-25° 52.0'				O		
					*8in B,L neb,E ns								
NGC 1365		FOR	9.6	GAL	11m x 6.2m	3h 33.6m	-36° 08.0'				O		
					!!vB,vL,mE,BN - Best example of barred spiral;Fornax Galaxy Cluster member								
NGC 1371		FOR	10.7	GAL	5.9m x 3.8m	3h 35.0m	-24° 56.0'						
					pB,pL,vIE,psbM - H II 262								
NGC 1379		FOR	10.9	GAL	2.4m x 2.3m	3h 36.1m	-35° 26.0'						
					B,pL,R,gpmB - Fornax Galaxy Cluster member								
NGC 1380		FOR	9.9	GAL	4.8m x 2.9m	3h 36.5m	-34° 59.0'				O		
					vB,L,R,psbM - Fornax Galaxy Cluster member								
NGC 1385		FOR	10.9	GAL	3.6m x 2.2m	3h 37.5m	-24° 30.0'						
					pB,pS,R,gpmB - H II 263								
NGC 1387		FOR	10.7	GAL	3.2m x 3.1m	3h 37.0m	-35° 30.0'						
					vB,pL,R,gmbM - Fornax Galaxy Cluster member								
NGC 1395		ERI	9.6	GAL	5.6m x 4.6m	3h 38.5m	-23° 02.0'				O		
					B,pS,E,psmbM - H I 58								
NGC 1398		FOR	9.7	GAL	7.2m x 5.2m	3h 38.9m	-26° 20.0'				O		
					cB,cL,R,vmbM								
NGC 1399		FOR	9.6	GAL	6.6m x 6.1m	3h 38.5m	-35° 27.0'				O		
					vB,pL,psbM,rr - Fornax Galaxy Cluster member								
NGC 1400		ERI	11.0	GAL	2.5m x 2.1m	3h 39.5m	-18° 41.0'						
					cB,pS,R,psmbM - H II 593;P w NGC 1407 nf								
NGC 1404		FOR	10.0	GAL	3.9m x 3.3m	3h 38.9m	-35° 36.0'						
					vB,pL,R,psmbM - Fornax Galaxy Cluster member								
NGC 1407		ERI	9.7	GAL	4.9m x 4.5m	3h 40.2m	-18° 35.0'						
					vB,L,R,svmbMN - H I 107								
NGC 1425		FOR	10.6	GAL	5.8m x 2.5m	3h 42.2m	-29° 54.0'						
					F,pL,iR,gbM - H II 852								
NGC 1427		FOR	10.9	GAL	3.8m x 2.6m	3h 42.3m	-35° 24.0'						

Chart 215

Name	M	Const.	Mag.	Type	Size	R.A.	Decl.	C	R	S	O	# Stars	B
Common					Notes								
					pF,S,R,psmbM - Fornax Galaxy Cluster member								
NGC 1532		ERI	9.9	GAL	11.6m x 3.4m	4h 12.1m	-32° 52.0'				O		
					B,vL,vmE32,psmbM - NGC 1531 np 2';Nearly edge-on								
NGC 1537		ERI	10.6	GAL	3.9m x 2.6m	4h 13.7m	-31° 39.0'						
					vB,pS,IE,psvmbM								

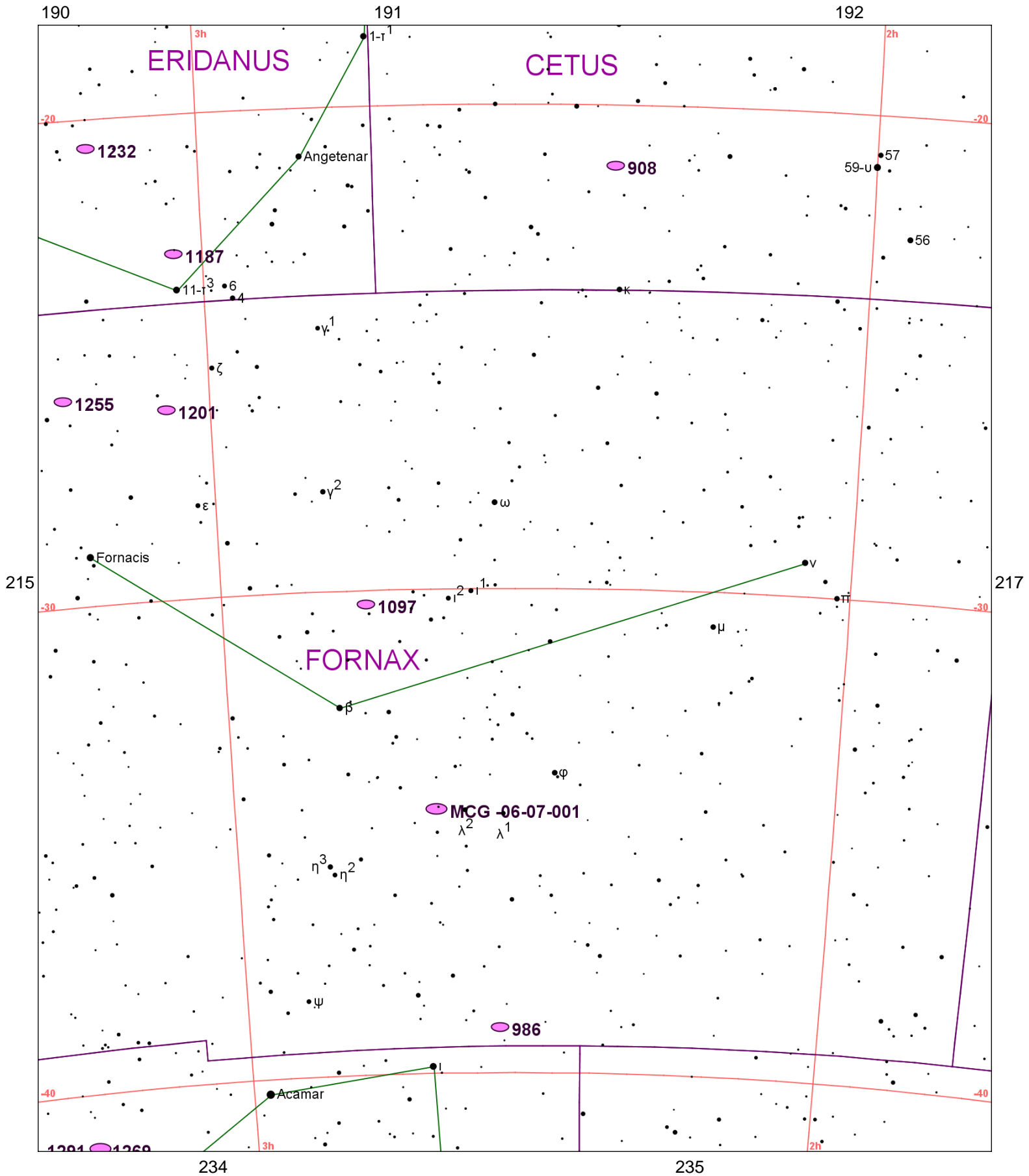


Chart 216

Name	M	Const.	Mag.	Type	Size	R.A.	Decl.	C	R	S	O	# Stars	B
Common					Notes								
MCG -06-07-001		FOR	8.1	GAL	17m x 12m	2h 39.9m	-34° 32.0'						
					vF,vvL,R,Low Surface Brightness - Invl GLOCL NGC 1049;Memb Local Grp;Brightest * = 19mag								
NGC 908		CET	10.2	GAL	6.1m x 2.7m	2h 23.1m	-21° 14.0'						
					cB,vL,E - H I 153								
NGC 986		FOR	10.9	GAL	4m x 3.2m	2h 33.6m	-39° 03.0'						
					pB,L,pmE,sbM,BI-N								
NGC 1097		FOR	9.5	GAL	9.4m x 6.6m	2h 46.3m	-30° 17.0'	C67			O		B
					vB,L,vmE151,vbMN - H V 48								
NGC 1187		ERI	10.8	GAL	5.6m x 3.8m	3h 02.6m	-22° 52.0'						
					pF,cL,pmE,gbM*16,r - H III 245;Multi arm spiral								
NGC 1201		FOR	10.7	GAL	3.3m x 1.9m	3h 04.1m	-26° 04.0'				O		
					cB,pS,vIE,r,S* nr - H I 109								
NGC 1232		ERI	9.9	GAL	7.1m x 6.3m	3h 09.8m	-20° 35.0'		R21	S51	O		B
					pB,cL,R,gbM,r - H II 258;Excellent face-on spiral								
NGC 1255		FOR	10.9	GAL	4.2m x 2.7m	3h 13.5m	-25° 44.0'						
					F,pL,F* close p								
NGC 1269		ERI	9.4	GAL	9.7m x 8.4m	3h 17.3m	-41° 06.0'						
					vB,R,gmbM								
NGC 1291		ERI	8.5	GAL	9.7m x 8.4m	3h 17.3m	-41° 06.0'				O		
					vB,pL,R,mbM,er - comp 2;2;PA138;UGC 2666								