

Chart 201													
Name	M	Const.	Mag.	Type	Size	R.A.	Decl.	C	R	S	O	# Stars	B
Common					Notes								
Antalova 2		SCO	8.8	OC		17h 29.7m	-32° 30.0'						
B 72		OPH		DN	30m	17h 23.5m	-23° 38.0'						
The Snake					13'-pL,pDark,thin winding Dneb at 100X - 1.5 deg nrf Theta Oph								
B 86		SGR		DN	4m	18h 02.7m	-27° 50.0'				O		
Ink Spot Nebula					very distinct Dneb - On Sgr star cloud preceding cluster NGC 6520								
Bochum 13		SCO	7.2	OC		17h 17.3m	-35° 33.0'					35	
Bochum 14		SGR	9.3	OC		18h 02.0m	-23° 42.0'					10	
Cr 316		SCO	3.4	OC	105m	16h 55.5m	-40° 50.0'						
Cr 332		SCO	8.9	OC	10.0m	17h 30.8m	-37° 05.0'					12	
Cr 333		SCO	9.8	OC	5.0m	17h 31.3m	-34° 05.0'					30	
Cr 338		SCO	8.0	OC	25.0m	17h 38.2m	-37° 34.0'					40	
Cr 345		SCO	10.9	OC	6.0m	17h 44.6m	-33° 45.0'						
Cr 347		SGR	8.8	OC	4.0m	17h 46.4m	-29° 18.0'					40	
					In nebula Sh2-16								
Cr 351		SGR	9.3	OC	9.0m	17h 49.4m	-28° 44.0'					30	
Cr 367		SGR	6.4	OC	37.0m	18h 09.6m	-23° 59.0'					30	
NGC 6235		OPH	10.2	GC	1.9m	16h 53.4m	-22° 11.0'						
					pB,cL,iR,rrr,*14..16 - H II 584								
NGC 6242		SCO	6.4	OC	9.0m	16h 55.6m	-39° 28.0'				O		
					Cl,B,L,Ri,st8...11								
NGC 6266	M62	OPH	6.6	GC	14.1m	17h 01.2m	-30° 07.0'				O		B
					vB,L,gmbM,rrr - Asymmetrical								
NGC 6268		SCO	9.5	OC	6.0m	17h 02.2m	-39° 44.0'						
					Cl,B,pL,cRi,st10...								
NGC 6273	M19	OPH	7.2	GC	5.3m	17h 02.6m	-26° 16.0'				O		B
					vB,L,R,vCM,rrr - One of the most oblate globulars								
NGC 6281		SCO	5.4	OC	200m x 150m	17h 04.7m	-37° 59.0'						
					Cl,L,pRi,IC,st9...11								
NGC 6284		OPH	9.0	GC	2.7m	17h 04.5m	-24° 46.0'						
					B,L,R,CM,st16... - H VI 11								
NGC 6287		OPH	9.2	GC	2.7m	17h 05.2m	-22° 42.0'						
					cB,L,R,gpmCM,rrr - H II 195								
NGC 6293		OPH	8.2	GC	3.5m	17h 10.2m	-26° 35.0'				O		B
					vB,L,R,psbM,st16 - H VI 12								
NGC 6302		SCO	12.8	PN	72s x 30s	17h 13.7m	-37° 06.0'	C69			O		
Bug Nebula					pB,E pf - aka Bipolar Nebula; much flattened figure 8 shape								
NGC 6304		OPH	8.4	GC	3.8m	17h 14.5m	-29° 28.0'						
					B,cL,R,lbM,rrr - H I 147								
NGC 6316		OPH	9.0	GC	4.9m	17h 16.6m	-28° 08.0'						
					cB,pS,R,gvmBM - H I 45								
NGC 6325		OPH	10.7	GC	1.6m	17h 18.0m	-23° 46.0'						
					pF,L,R,rr								
NGC 6333	M9	OPH	7.9	GC	5.5m	17h 19.2m	-18° 31.0'				O		B
					B,L,R,eCM,rrr - Dark neb B64 prominent to west								
NGC 6342		OPH	9.9	GC	3.0m	17h 21.2m	-19° 35.0'						
					cB,pS,IE,eR - H I 149								
NGC 6355		OPH	9.6	GC	6.1m	17h 24.0m	-26° 21.0'						
					cF,L,R,gbM,rrr - H I 46								
NGC 6369		OPH	11.0	PN	30s x 29s	17h 29.3m	-23° 46.0'		R91	S70	O		
Little Ghost Nebula					Annular,pB,S,R								
NGC 6374		SCO	9.0	OC	20m	17h 34.7m	-32° 35.0'						
					Cl,S,P,B* inv								
NGC 6383		SCO	5.5	OC	20m	17h 34.7m	-32° 35.0'				O	40	
					Cl,st13,*6,7 in mag								
NGC 6396		SCO	8.5	OC	3.0m	17h 37.6m	-35° 02.0'					30	
					Cl,pL,IRi,IC								
NGC 6400		SCO	8.8	OC	12m	17h 40.2m	-36° 57.0'					60	

Chart 201													
Name	M	Const.	Mag.	Type	Size	R.A.	Decl.	C	R	S	O	# Stars	B
Common					Notes								
					Cl,pL,pRi,iR,*9...10								
NGC 6401		OPH	9.5	GC	1m	17h 38.6m	-23° 55.0'						
					pB,pL,R,*12F inv - H I 44								
NGC 6404		SCO	10.6	OC	5.0m	17h 39.6m	-33° 15.0'					50	
					Cl,F,L,pRi,iC,*13..15								
NGC 6405	M6	SCO	4.2	OC	20m	17h 40.3m	-32° 15.0'				O	80	B
Butterfly Cluster					Cl,L,iR,iC,st7,10... - 51 members to 10.5 mag incl var* BM Sco								
NGC 6416		SCO	5.7	OC	14m	17h 44.3m	-32° 22.0'					40	
					Cl,vL,Ri,iC								
NGC 6425		SCO	7.2	OC	10m	17h 47.0m	-31° 32.0'					35	
					Cl,pS,iRi,iC,*10..12								
NGC 6440		SGR	9.7	GC	1.7m	17h 48.9m	-20° 22.0'						
					pB,pL,R,bM - H I 150;* eF								
NGC 6441		SCO	7.4	GC	7.8m	17h 50.2m	-37° 03.0'				O		
					vB,pL,R,vgmbM								
NGC 6445		SGR	13.0	PN	35s x 30s	17h 49.3m	-20° 01.0'		R102	S89	O		
					pB,pS,R,gbM,r,*15 np - Little Gem								
NGC 6451		SCO	8.2	OC	8.0m	17h 50.7m	-30° 13.0'					80	
Tom Thumb cluster					Cl,pL,pRi,bifid,st12 - H VI 13;Dark lane down center								
NGC 6453		SCO	9.9	GC	3.5m	17h 50.9m	-34° 36.0'						
					Cl,iR,pmbM,r								
NGC 6469		SGR	8.2	OC	12.0m	17h 53.2m	-22° 17.0'					50	
					Cl,pRi,in Milky Way								
NGC 6475	M7	SCO	3.3	OC	80.0m	17h 53.9m	-34° 48.0'				O	80	B
Ptolemy's Cluster					Cl,vB,pRi,iC,*7...12 - 80 members to 10th mag;Fine naked eye cluster								
NGC 6494	M23	SGR	5.5	OC	27.0m	17h 57.1m	-18° 59.0'				O	150	B
					Cl,B,vL,pRi,iC,*10.. - 100 members to 13th mag								
NGC 6514	M20	SGR	6.3	DN	28.0m	18h 02.7m	-22° 58.0'				O	67	
Trifid Nebula					vB,vL,Trifid,D* inv - sev dark lanes;H IV 41 & V 10;D* HN 40 invl								
NGC 6520		SGR	7.6	OC	6.0m	18h 03.4m	-27° 53.0'		R103	S90	O	60	B
					Cl,pS,Ri,iC,st9...13 - H VII 7;Dark neb B86 on W edge								
NGC 6522		SGR	8.6	GC	5.6m	18h 03.6m	-30° 02.0'				O		
					B,pL,R,gvmBM,rrr - H I 49								
NGC 6523	M8	SGR	5.0	DN	45m x 30m	18h 03.7m	-24° 23.0'				O		B
Lagoon Nebula					!!!vB,eL,eIF,w L Cl - Cl NGC 6530 invl;dark lane crosses neb								
NGC 6528		SGR	9.5	GC	3.7m	18h 04.8m	-30° 03.0'						
					pF,cS,R,gbM,rrr - H II 200;* mags 16...;Gamma Sgr in field								
NGC 6530	M19	SGR	4.6	OC	15.0m	18h 04.5m	-24° 21.0'				O		B
					Cl,B,L,pRi,f M8 - In Lagoon nebula M8;25* mags 7...								
NGC 6531	M21	SGR	5.9	OC	13.0m	18h 04.2m	-22° 29.0'				O	70	
					Cl,pRi,iC,st9...12 - In Sgr OB1;36 members to 12th mag								
NGC 6544		SGR	8.3	GC	8.4m	18h 07.3m	-25° 00.0'				O		
					cF,pL,iR,r - H II 197								
NGC 6546		SGR	8.0	OC	13.0m	18h 07.4m	-23° 18.0'				O	150	
					Cl,vL,vRi								
NGC 6553		SGR	8.3	GC	3.2m	18h 09.3m	-25° 54.0'						
					F,L,IE,vglbM,rr - H IV 12;* mags 20...								
NGC 6558		SGR	9.3	GC	3.7m	18h 10.3m	-31° 46.0'						
					pB,pL,R,glbM,rrr								
NGC 6563		SGR	13.0	PN	54s x 41s	18h 12.0m	-33° 52.0'				O		
					F,L,cE,hazy edge								
NGC 6568		SGR	8.6	OC	13.0m	18h 12.8m	-21° 35.0'					50	
					Cl,vL,iC - H VII 30								
NGC 6569		SGR	8.7	GC	5.8m	18h 13.6m	-31° 50.0'						
					cB,L,R,rrr,*15.. - H II 201;D* Burnham 1353 in field								
PK 3- 4.7		SGR	11.0	PN	12s	18h 11.6m	-28° 22.0'						
PK 7+ 1.1		SGR	11.0	PN	6.6s	17h 55.1m	-21° 45.0'						

Chart 201													
Name	M	Const.	Mag.	Type	Size	R.A.	Decl.	C	R	S	O	# Stars	B
Common					Notes								
PK 355+ 3.2		SCO	10.0	PN	<10s	17h 21.5m	-30° 21.0'						
Pismis 24		SCO	9.6	OC	4.0m	17h 25.3m	-34° 21.0'					15	
Ru 127		SCO	8.8	OC	8.0m	17h 37.7m	-36° 16.0'					20	
Tr 24		SCO	8.6	OC	60.0m	16h 57.0m	-40° 40.0'				O		
vvL,B,E,Irr - 200 * in rich Milky field;nebula IC 4628 invl													
Tr 26		OPH	9.5	OC	7.0m	17h 28.5m	-29° 29.0'					40	
13"-pB,L,nC,sRi at 100X; 32*													
Tr 27		SCO	6.7	OC	7.0m	17h 36.2m	-33° 29.0'					35	
Extinction varies from 3 to 8 mags across face of cluster													
Tr 28		SCO	7.7	OC	8.0m	17h 36.8m	-32° 39.0'					30	
Tr 29		SCO	7.5	OC	9.0m	17h 41.6m	-40° 06.0'					30	
Tr 30		SCO	8.8	OC	10.0m	17h 56.5m	-35° 19.0'					80	
F,pL,Irr - In field of M 7													
Tr 31		SGR	9.8	OC	8.0m	17h 59.9m	-28° 11.0'					25	

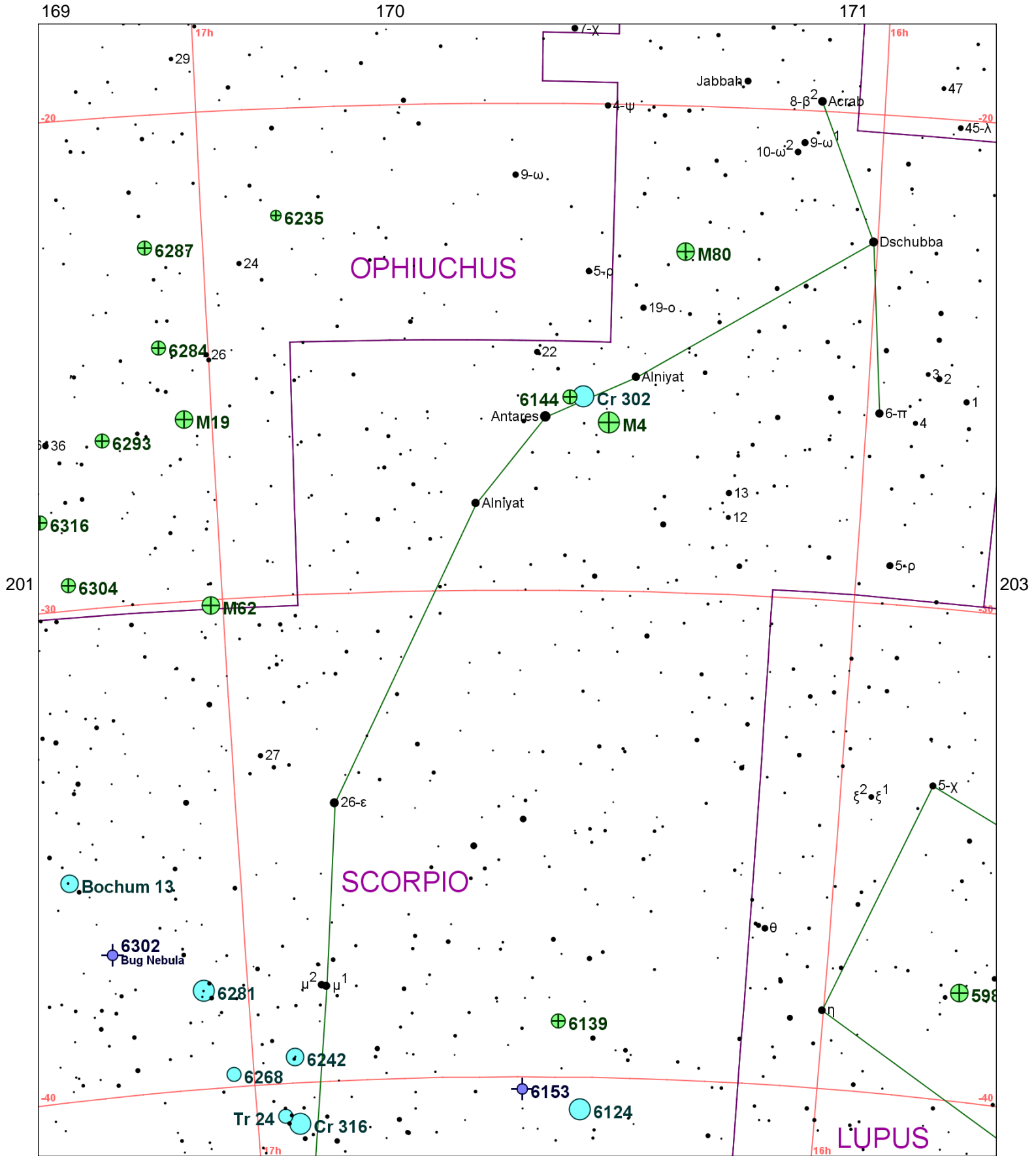


Chart 202													
Name	M	Const.	Mag.	Type	Size	R.A.	Decl.	C	R	S	O	# Stars	B
Common					Notes								
Bochum 13		SCO	7.2	OC		17h 17.3m	-35° 33.0'					35	
Cr 302		SCO	1.0	OC	500m	16h 26.0m	-26° 00.0'						
Antares moving cluster													
Cr 316		SCO	3.4	OC	105m	16h 55.5m	-40° 50.0'						
NGC 5986		LUP	7.1	GC	9.8m	15h 46.1m	-37° 47.0'				O		
!,vB,L,R,vgbM,st 13...15													
NGC 6093	M80	SCO	7.2	GC	5.1m	16h 17.0m	-22° 59.0'				O		B
vB,L,vmbM,rrr,st 14... - Extremely rich and compressed													
NGC 6121	M4	SCO	5.9	GC	26.3m	16h 23.6m	-26° 32.0'				O		B
Cl,8 or 10 B* in line,rrr - Look for central bar structure													
NGC 6124		SCO	5.8	OC	29.0m	16h 25.3m	-40° 39.0'	C75			O	100	B
Cl,B,L,pRi,ICM,*9..11													
NGC 6139		SCO	9.2	GC	5.5m	16h 27.7m	-38° 51.0'						
B,pL,R,psbM,rr													
NGC 6144		SCO	9.1	GC	6.2m	16h 27.2m	-26° 01.0'						
Cl,cL,mC,gbM,rrr - H VI 10													
NGC 6153		SCO	11.5	PN	25s	16h 31.5m	-40° 15.0'				O		
Planetary,stellar													
NGC 6235		OPH	10.2	GC	1.9m	16h 53.4m	-22° 11.0'						
pB,cL,iR,rrr,*14..16 - H II 584													
NGC 6242		SCO	6.4	OC	9.0m	16h 55.6m	-39° 28.0'				O		
Cl,B,L,Ri,st8...11													
NGC 6266	M62	OPH	6.6	GC	14.1m	17h 01.2m	-30° 07.0'				O		B
vB,L,gmbM,rrr - Asymmetrical													
NGC 6268		SCO	9.5	OC	6.0m	17h 02.2m	-39° 44.0'						
Cl,B,pL,cRi,st10...													
NGC 6273	M19	OPH	7.2	GC	5.3m	17h 02.6m	-26° 16.0'				O		B
vB,L,R,vCM,rrr - One of the most oblate globulars													
NGC 6281		SCO	5.4	OC	200m x 150m	17h 04.7m	-37° 59.0'						
Cl,L,pRi,IC,st9...11													
NGC 6284		OPH	9.0	GC	2.7m	17h 04.5m	-24° 46.0'						
B,L,R,CM,st16... - H VI 11													
NGC 6287		OPH	9.2	GC	2.7m	17h 05.2m	-22° 42.0'						
cB,L,R,gpmCM,rrr - H II 195													
NGC 6293		OPH	8.2	GC	3.5m	17h 10.2m	-26° 35.0'				O		B
vB,L,R,psbM,st16 - H VI 12													
NGC 6302		SCO	12.8	PN	72s x 30s	17h 13.7m	-37° 06.0'	C69			O		
Bug Nebula													
NGC 6304		OPH	8.4	GC	3.8m	17h 14.5m	-29° 28.0'						
B,cL,R,lbM,rrr - H I 147													
NGC 6316		OPH	9.0	GC	4.9m	17h 16.6m	-28° 08.0'						
cB,pS,R,gvmBM - H I 45													
Tr 24		SCO	8.6	OC	60.0m	16h 57.0m	-40° 40.0'				O		
vvL,B,E,lrr - 200 * in rich Milky field;nebula IC 4628 invl													

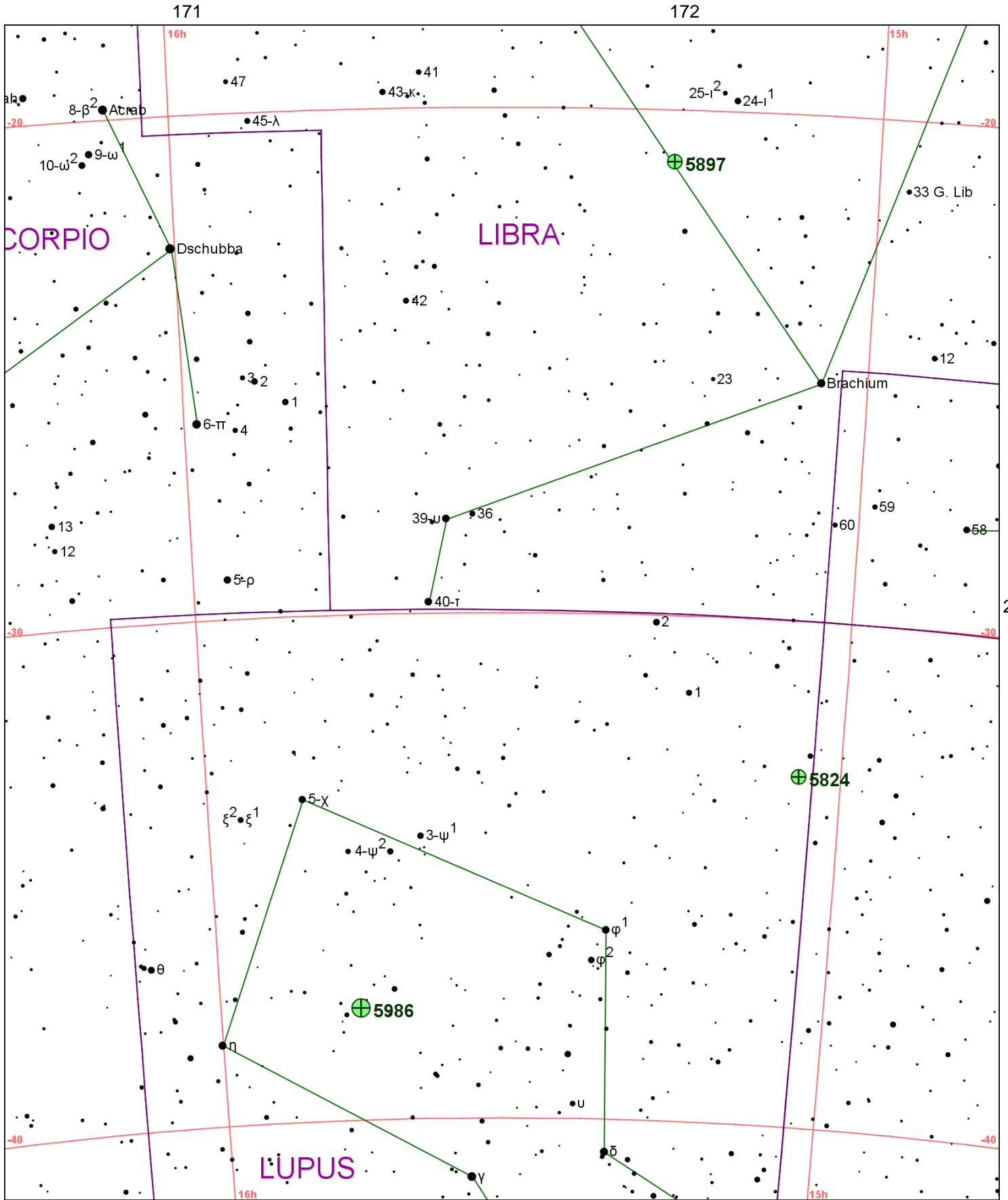


Chart 203

Name	M	Const.	Mag.	Type	Size	R.A.	Decl.	C	R	S	O	# Stars	B
Common					Notes								
NGC 5824		LUP	9.0	GC	6.2m	15h 04.0m	-33° 04.0'						
					pB,S,Stell Nuc								
NGC 5897		LIB	8.6	GC	8.7m	15h 17.4m	-21° 01.0'				O		
					pF,L,viR,vgbM,rrr - H VI 19								
NGC 5986		LUP	7.1	GC	9.8m	15h 46.1m	-37° 47.0'				O		
					!,vB,L,R,vgbM,st 13...15								

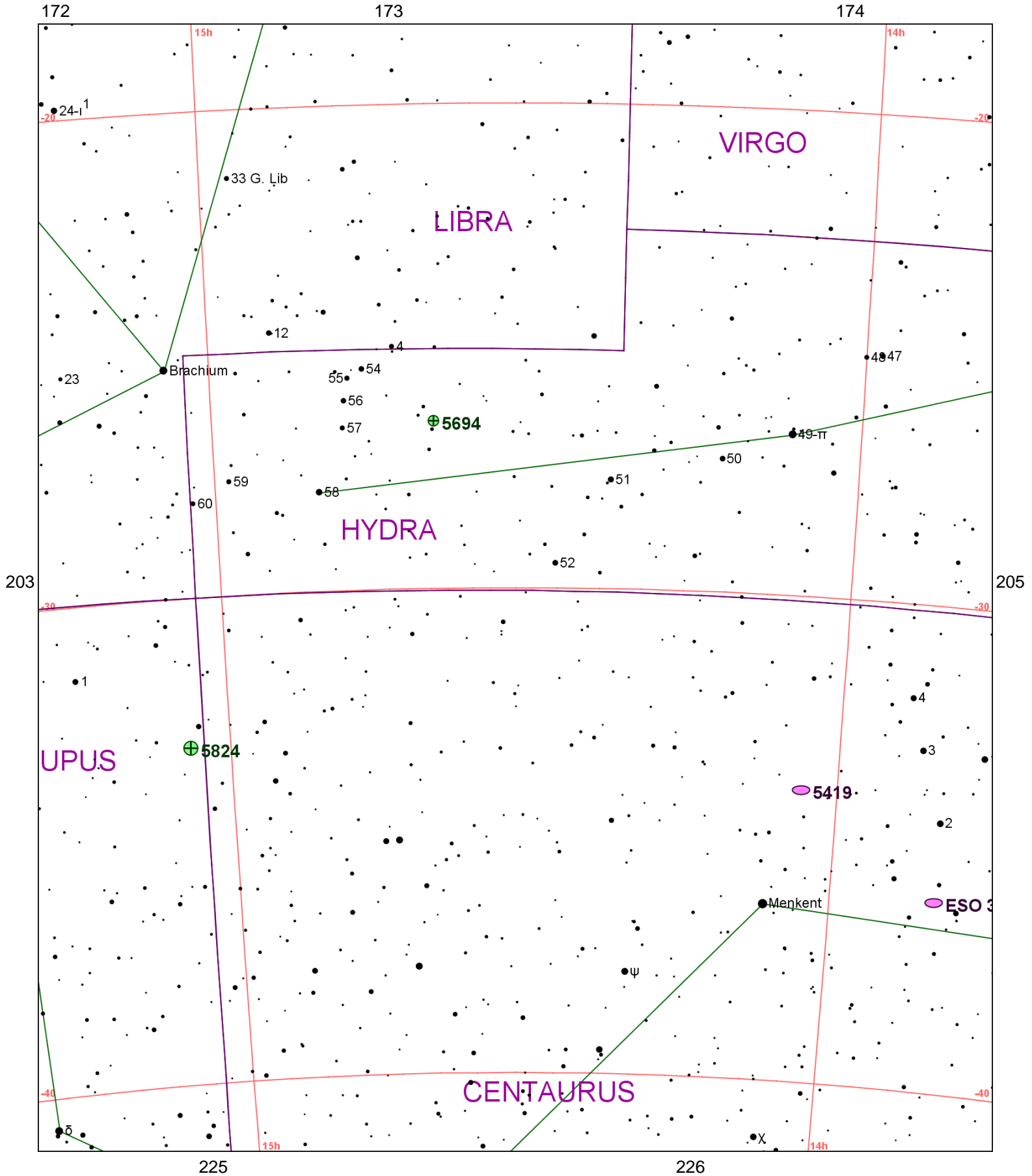


Chart 204

Name	M	Const.	Mag.	Type	Size	R.A.	Decl.	C	R	S	O	# Stars	B
Common					Notes								
ESO 383-G087		CEN	10.5	GAL	4.5m x 3.6m	13h 49.3m	-36° 04.0'						
NGC 5419		CEN	10.9	GAL	4.1m x 3.3m	14h 03.6m	-33° 59.0'						
					pB,pL,R,gpmbM								
NGC 5694		HYA	10.2	GC	3.6m	14h 39.6m	-26° 32.0'	C66					
					cB,cS,R,psbM,r,* 9.5 sp - H II 196;Rich w eF stars;distant globular								
NGC 5824		LUP	9.0	GC	6.2m	15h 04.0m	-33° 04.0'						
					pB,S,Stell Nuc								

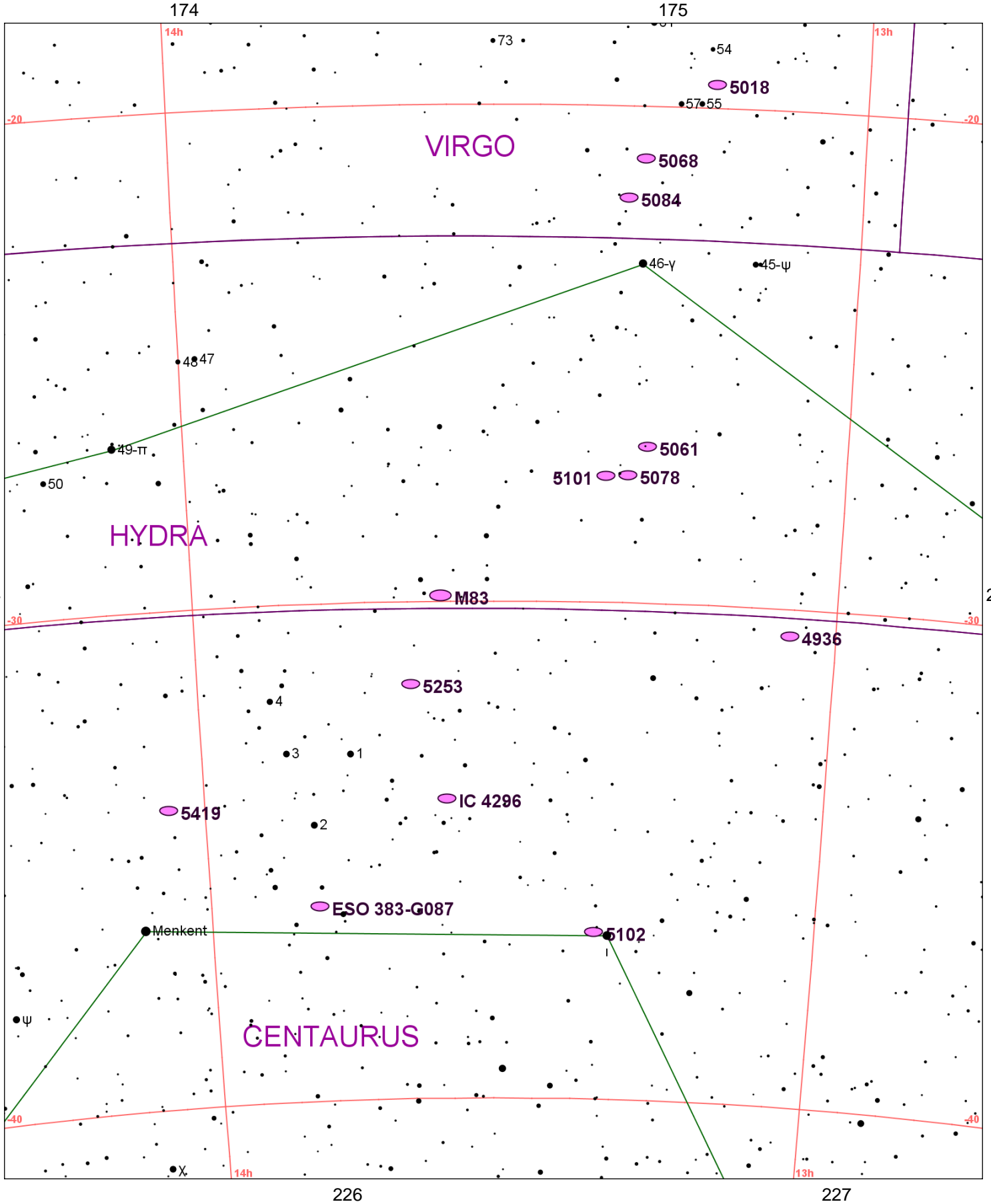


Chart 205

Name	M	Const.	Mag.	Type	Size	R.A.	Decl.	C	R	S	O	# Stars	B
Common					Notes								
ESO 383-G087		CEN	10.5	GAL	4.5m x 3.6m	13h 49.3m	-36° 04.0'						
IC 4296		CEN	10.6	GAL	3.4m x 3.3m	13h 36.6m	-33° 58.0'						
					pF,pS,R								
NGC 4936		CEN	10.8	GAL	3.2m x 2.6m	13h 04.3m	-30° 32.0'						
					pB,S,R,bM,* f 6sec								
NGC 5018		VIR	10.8	GAL	3.4m x 2.6m	13h 13.0m	-19° 31.0'						
					cB,S,R,mbMpBN - H II 746								
NGC 5061		HYA	10.4	GAL	3.5m x 2.9m	13h 18.1m	-26° 50.0'						
					vB,S,R,vsmbM,*1Of - H I 138								
NGC 5068		VIR	10.0	GAL	7.3m x 6.4m	13h 18.9m	-21° 02.0'						
					F,L,iR,bM - H II 312;Coarse spiral;NGC 5087 in field								
NGC 5078		HYA	11.0	GAL	19.5m x 5.8m	13h 19.8m	-27° 25.0'						
					pB,pS,cE,psbM,*7 8' f - H II 566;Dust lane;Nearly edge-on								
NGC 5084		VIR	10.5	GAL	10.6m x 1.8m	13h 20.3m	-21° 50.0'						
					cB,cS,vIE90 - H II 313								
NGC 5101		HYA	10.6	GAL	5.7m x 4.7m	13h 21.8m	-27° 26.0'						
					cB,pS,IE,psbM* - H II 567								
NGC 5102		CEN	9.6	GAL	8.6m x 2.7m	13h 22.0m	-36° 38.0'						
					vB,pS,R,svmbM - 17' nf Iota CEN								
NGC 5236	M83	HYA	7.5	GAL	13.1m x 12.2m	13h 37.0m	-29° 52.0'				O		B
					vB,vL,E55,esBMN,spir - Fast SupNova producer-4 in 50 yrs								
NGC 5253		CEN	10.4	GAL	4.6m x 1.7m	13h 39.9m	-31° 39.0'				O		
					B,pL,E45,psmbM - H II 638;SN in 1895 & 1975								
NGC 5419		CEN	10.9	GAL	4.1m x 3.3m	14h 03.6m	-33° 59.0'						
					pB,pL,R,gpmbM								

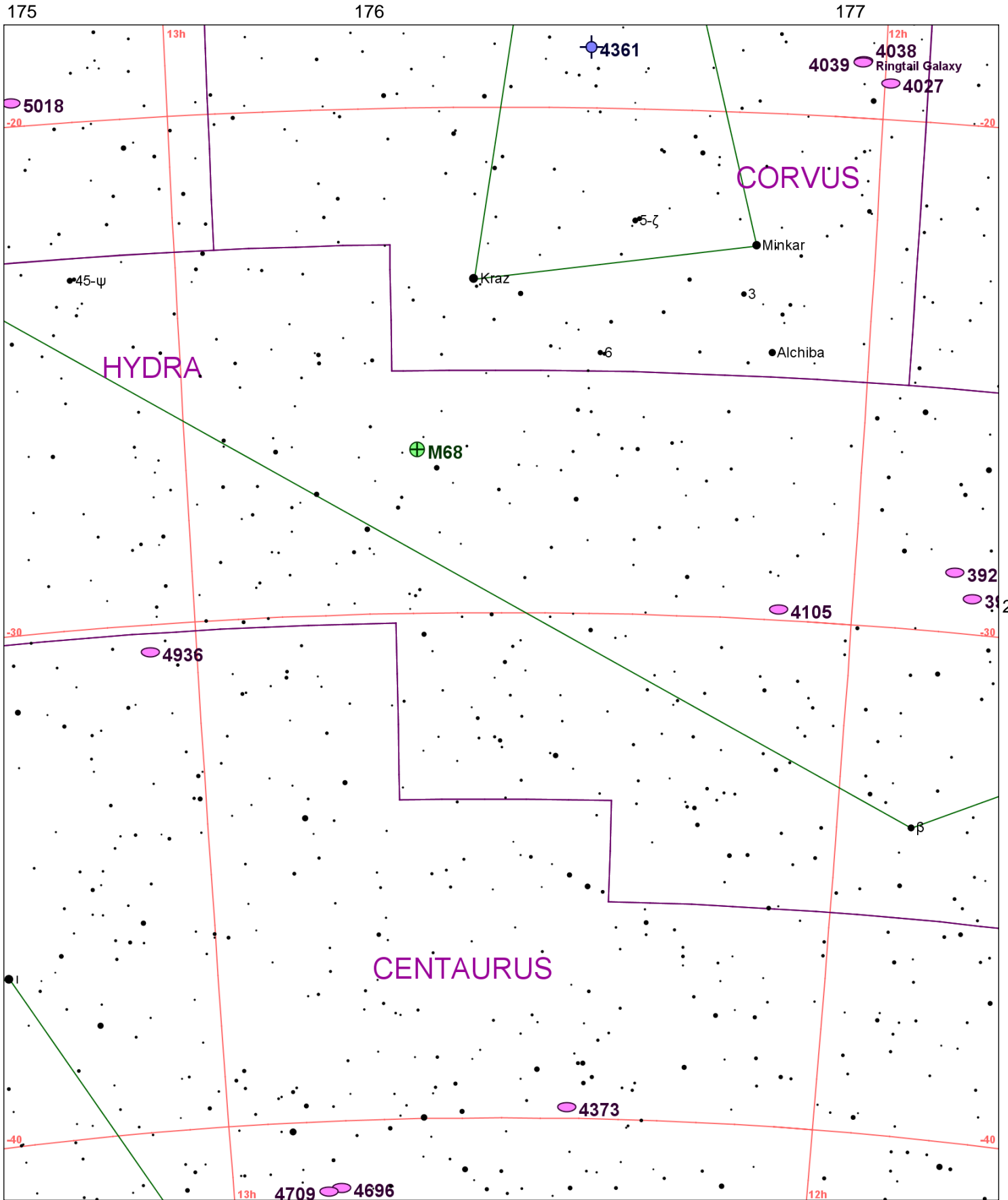


Chart 206

Name	M	Const.	Mag.	Type	Size	R.A.	Decl.	C	R	S	O	# Stars	B
Common					Notes								
NGC 3904		HYA	10.9	GAL	2.7m x 2m	11h 49.2m	-29° 17.0'						
					pB,S,R,mbM - H II 864								
NGC 3923		HYA	9.8	GAL	6.6m x 4.5m	11h 51.0m	-28° 48.0'				O		
					B,pL,IE,gmbM,r,vS* sp inv - H I 259								
NGC 4027		CRV	11.1	GAL	3.3m x 2.4m	11h 59.5m	-19° 16.0'				O		
					pF,pL,R,rr,st16 - H II 296								
NGC 4038		CRV	10.3	GAL	3.4m x 2m	12h 01.9m	-18° 52.0'	C60	R74		O		
Ringtail Galaxy					pB,cL,R,vgbM - H IV 28;two filaments								
NGC 4039		CRV	10.6	GAL	3.3m x 1.7m	12h 01.9m	-18° 53.0'	C61					
					pF,pL - H II 282								
NGC 4105		HYA	10.6	GAL	2.8m x 2.1m	12h 06.7m	-29° 46.0'						
					pF,pS,R,psbM,r,p of 2 - H II 865;Interacting P w NGC 4106								
NGC 4361		CRV	10.9	PN	80s	12h 24.5m	-18° 47.0'		R75	S32	O		
					vB,L,R,vsmbMN,r - H I 65;PK294+43.1								
NGC 4373		CEN	10.9	GAL	3.6m x 2.6m	12h 25.3m	-39° 46.0'						
					pB,S,R,pgvmbM								
NGC 4590	M68	HYA	8.2	GC	9.8m	12h 39.5m	-26° 45.0'				O		B
					L,eRi,vC,iR,rrr,st 13...								
NGC 4696		CEN	10.4	GAL	4.7m x 3.3m	12h 48.8m	-41° 19.0'						
					pB,L,R,gbM,r								
NGC 4709		CEN	10.9	GAL	2.3m x 2m	12h 50.1m	-41° 23.0'						
					pB,cS,R,gbM								
NGC 4936		CEN	10.8	GAL	3.2m x 2.6m	13h 04.3m	-30° 32.0'						
					pB,S,R,bM,* f 6sec								
NGC 5018		VIR	10.8	GAL	3.4m x 2.6m	13h 13.0m	-19° 31.0'						
					cB,S,R,mbMpBN - H II 746								

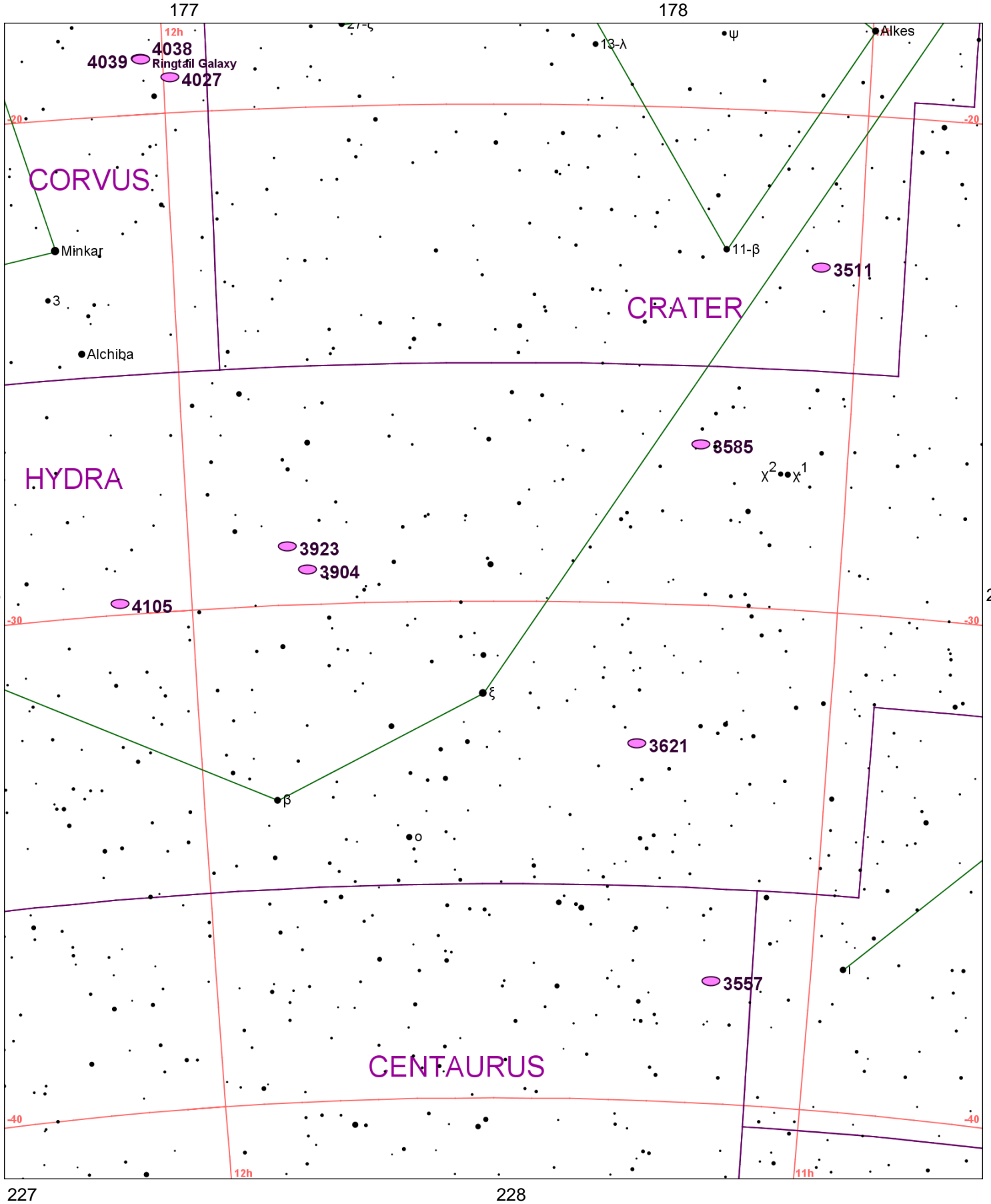


Chart 207

Name	M	Const.	Mag.	Type	Size	R.A.	Decl.	C	R	S	O	# Stars	B
Common					Notes								
NGC 3511		CRT	11.0	GAL	6m x 2.1m	11h 03.4m	-23° 05.0'						
					vF,vL,mE - H V 39								
NGC 3557		CEN	10.4	GAL	4m x 3m	11h 10.0m	-37° 32.0'						
					B,S,R,pgmbM,1st of 3								
NGC 3585		HYA	9.9	GAL	5.2m x 3.1m	11h 13.3m	-26° 45.0'				O		
					B,pL,E,vsmbMN,2 B st tri - H II 269								
NGC 3621		HYA	9.7	GAL	12.4m x 5.7m	11h 18.3m	-32° 49.0'				O		
					cB,vL,E 160,am 4 st - H I 241								
NGC 3904		HYA	10.9	GAL	2.7m x 2m	11h 49.2m	-29° 17.0'						
					pB,S,R,mbM - H II 864								
NGC 3923		HYA	9.8	GAL	6.6m x 4.5m	11h 51.0m	-28° 48.0'				O		
					B,pL,IE,gmbM,r,vS* sp inv - H I 259								
NGC 4027		CRV	11.1	GAL	3.3m x 2.4m	11h 59.5m	-19° 16.0'				O		
					pF,pL,R,rr,st16 - H II 296								
NGC 4038		CRV	10.3	GAL	3.4m x 2m	12h 01.9m	-18° 52.0'	C60	R74		O		
Ringtail Galaxy					pB,cL,R,vgbM - H IV 28;two filaments								
NGC 4039		CRV	10.6	GAL	3.3m x 1.7m	12h 01.9m	-18° 53.0'	C61					
					pF,pL - H II 282								
NGC 4105		HYA	10.6	GAL	2.8m x 2.1m	12h 06.7m	-29° 46.0'						
					pF,pS,R,psbM,r,p of 2 - H II 865;Interacting P w NGC 4106								

Chart 208

Name	M	Const.	Mag.	Type	Size	R.A.	Decl.	C	R	S	O	# Stars	B
Common					Notes								
NGC 3109		HYA	9.9	GAL	19.7m x 3.4m	10h 03.1m	-26° 10.0'				O		
					cF,vL,vmE 82,lbM								
NGC 3132		VEL	8.2	PN	84s x 53s	10h 07.0m	-40° 26.0'	C74			O		
Eight-Burst Nebula					!! Planetary,vB,vL,IE *9m - actual central star is 15.8 mag								
NGC 3223		ANT	11.0	GAL	4.1m x 2.7m	10h 21.6m	-34° 16.0'						
					pB,vL,vIE,pslbMN								
NGC 3242		HYA	8.6	PN	40s x 35s	10h 24.8m	-18° 39.0'	C59	R50	S57	O		
Ghost of Jupiter					! vB,IE 147,45" d,blue - H IV 27								
NGC 3511		CRT	11.0	GAL	6m x 2.1m	11h 03.4m	-23° 05.0'						
					vF,vL,mE - H V 39								
NGC 3557		CEN	10.4	GAL	4m x 3m	11h 10.0m	-37° 32.0'						
					B,S,R,pgmbM,1st of 3								
NGC 3585		HYA	9.9	GAL	5.2m x 3.1m	11h 13.3m	-26° 45.0'				O		
					B,pL,E,vsmbMN,2 B st tri - H II 269								
NGC 3621		HYA	9.7	GAL	12.4m x 5.7m	11h 18.3m	-32° 49.0'				O		
					cB,vL,E 160,am 4 st - H I 241								