

Chart 185

Name	M	Const.	Mag.	Type	Size	R.A.	Decl.	C	R	S	O	# Stars	B
<b>Common</b>					<b>Notes</b>								
Basel 11A		CMA	8.2	OC	9.0m	7h 17.1m	-13° 58.0'					30	
Bochum 3		MON	9.9	OC		7h 03.4m	-5° 04.0'					25	
Cr 121		CMA	2.6	OC	50.0m	6h 54.2m	-24° 38.0'					20	
Cr 465		MON	10.1	OC	9.0m	7h 07.2m	-10° 37.0'						
Haffner 6		CMA	9.2	OC	4.0m	7h 20.1m	-13° 08.0'					60	
NGC 2142		MON	5.0	MISC		6h 01.8m	-10° 36.0'						
					* (3 MON) inv in pL,F,neb								
NGC 2167		MON	6.6	MISC		6h 07.0m	-6° 12.0'						
					nebulous *7,am 3* - H IV 44								
NGC 2196		LEP	11.0	GAL	2.8m x 2.2m	6h 12.2m	-21° 48.0'						
					pF,pS,vIE,pmbM,st nr - H II 265								
NGC 2204		CMA	8.6	OC	13.0m	6h 15.5m	-18° 40.0'					80	
					Cl,L,pRi,IC - H VII 13;About 20 F *								
NGC 2207		CMA	10.8	GAL	4.2m x 2.6m	6h 16.4m	-21° 22.0'						
					pB,pL,mE87,pslbMRN,biN,ring surrounding - Double galaxy or interacting pair								
NGC 2215		MON	8.4	OC	11.0m	6h 20.8m	-7° 17.0'					40	
					Cl,cL,pRi,pC,st11.15 - H VII 20								
NGC 2232		MON	3.9	OC	30m	6h 28.0m	-4° 51.0'				O	20	B
					B* (10 MON) + Cl - H VIII 25								
NGC 2250		MON	8.9	OC	8.0m	6h 33.8m	-5° 05.0'					10	
					Cl,pRi,IC,iF,*8,*12...14								
NGC 2287	M41	CMA	4.5	OC	38.0m	6h 46.0m	-20° 45.0'				O	80	B
					Cl,vL,B,IC,st 8... - 150 members to 13 mag;orange * near center								
NGC 2299		MON	8.9	OC	2.5m	6h 51.9m	-7° 05.0'						
					Cl of 30 or 40 *								
NGC 2302		MON	8.9	OC	2.5m	6h 51.9m	-7° 05.0'					30	
					Cl,L,P,IC - H VIII 39								
NGC 2309		MON	10.5	OC	3.0m	6h 56.1m	-7° 10.0'					40	
					Cl,pL,pRi,mC,st13 - H VI 18								
NGC 2311		MON	9.6	OC	7.0m	6h 57.8m	-4° 37.0'					50	
					Cl,IC,not Ri - H VIII 60								
NGC 2323	M50	MON	5.9	OC	16m	7h 02.5m	-8° 23.0'				O	80	B
					Cl,vL,Ri,pC - About 100 stars mags 9...14								
NGC 2335		MON	7.2	OC	12.0m	7h 06.8m	-10° 02.0'					35	
					Cl,L,IC - H VIII 32;In CMa OB1								
NGC 2343		MON	6.7	OC	7.0m	7h 08.1m	-10° 37.0'					20	B
					Cl,cL,P,IC - H VIII 33								
NGC 2345		CMA	7.7	OC	12.0m	7h 08.3m	-13° 12.0'					70	
					Cl,pL,pRi,gbM,*10.14								
NGC 2353		MON	7.1	OC	20.0m	7h 14.5m	-10° 16.0'				O	30	
					Cl,L,IC,one vB* - H VIII 34;In CMa OB1								
NGC 2354		CMA	6.5	OC	20.0m	7h 14.3m	-25° 42.0'				O	100	
					Cl,cRi,IC - H VII 16								
NGC 2359		CMA		DN	10m x 5m	7h 18.5m	-13° 14.0'		R34	S25	O		
					Duck Nebula								
NGC 2360		CMA	7.2	OC	13.0m	7h 17.7m	-15° 38.0'	C58				80	B
					Cl,vL,Ri,pC,st9...12 - H VII 12								
NGC 2362		CMA	4.1	OC	8.0m	7h 18.7m	-24° 57.0'	C64			O	60	B
					Cl,pL,Ri,(30 CMA) - H VII 17;40 * to 13 mag surround Tau Cma;sev pairs								
NGC 2367		CMA	7.9	OC	3.5m	7h 20.1m	-21° 53.0'					30	
					Cl,S,P,IC - H VIII 28								
Tombaugh 1		CMA	10.5	OC	5.0m	7h 01.3m	-19° 40.0'					45	

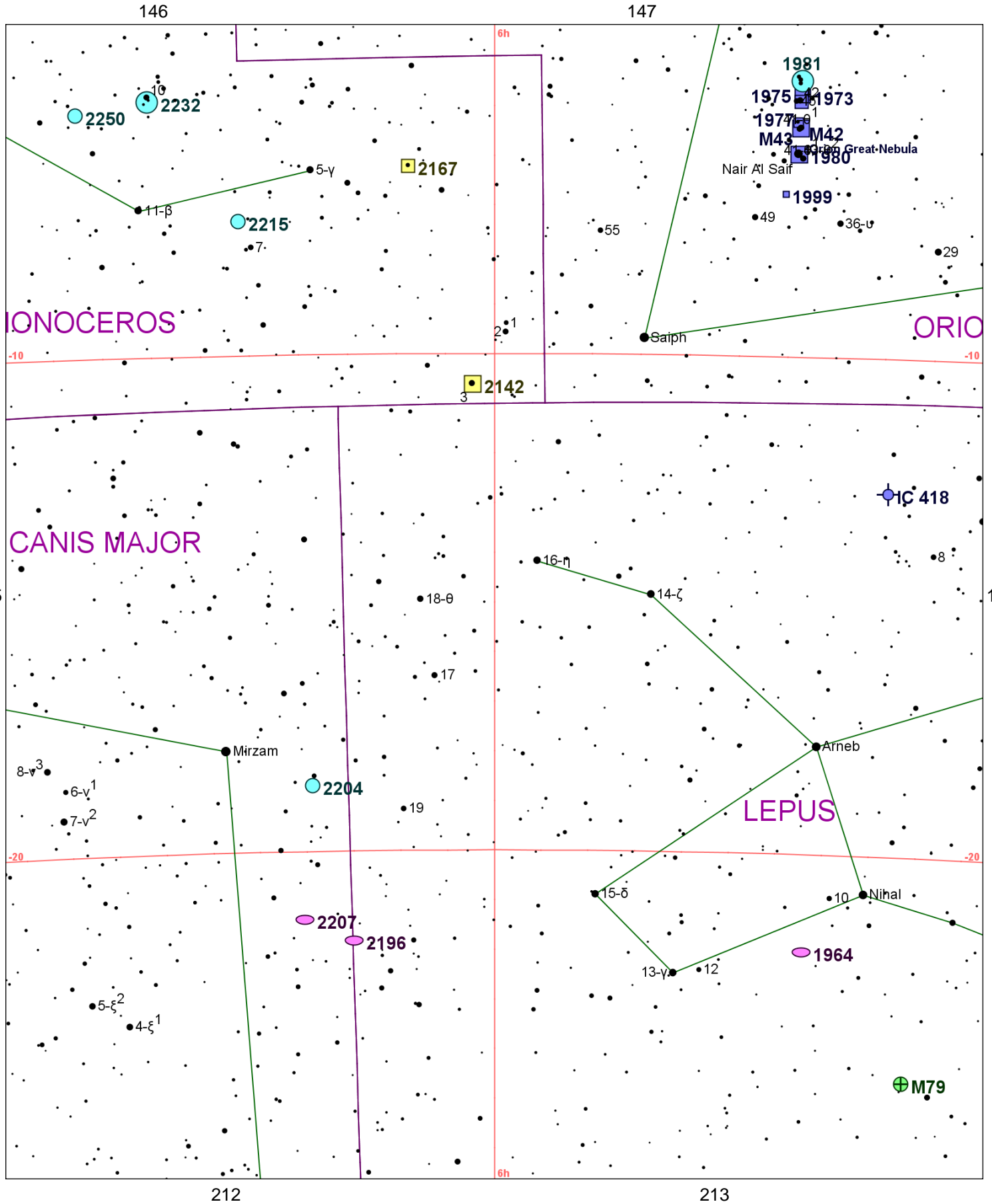


Chart 186													
Name	M	Const.	Mag.	Type	Size	R.A.	Decl.	C	R	S	O	# Stars	B
<b>Common</b>					<b>Notes</b>								
IC 418		LEP	10.7	PN	14s x 11s	5h 27.5m	-12° 42.0'						
					vS,B - 11 mag star in nebulous disk								
NGC 1904	M79	LEP	8.4	GC	7.8m	5h 24.2m	-24° 31.0'				O		B
					pL,eRi,eC,rrr - Stars vF								
NGC 1964		LEP	10.8	GAL	5.5m x 2.1m	5h 33.4m	-21° 57.0'						
					F,L,R,vsymbM,*12,3 st inv - H IV 21								
NGC 1973		ORI	7.0	DN	5m x 5m	5h 35.1m	-4° 44.0'		R26	S74	O		
					*8,9 inv in neb								
NGC 1975		ORI	7.0	DN	10m x 5m	5h 35.3m	-4° 41.0'						
					B** inv in neb								
NGC 1976	M42	ORI	4.0	DN	90m x 60m	5h 35.3m	-5° 23.0'				O		B
					Orion Great Nebula !!!,Theta Orionis and the great nebula M42 - Trapezium* 6.7-7.7m;>50 var* invl;M 43 to NE								
NGC 1977		ORI	7.0	DN	20m x 10m	5h 35.3m	-4° 51.0'						
					42 Orionis neb - H V 30								
NGC 1980		ORI	2.5	DN	14m x 14m	5h 35.4m	-5° 55.0'						
					vF,vvL,44 Ori invl - H V 31								
NGC 1981		ORI	4.2	OC	25.0m	5h 35.2m	-4° 26.0'				O	20	B
					Cl,vB,IRi,st L,sc - In Ori OB1;incl D* Struve 750								
NGC 1982	M43	ORI	9.0	DN	20m x 15m	5h 35.5m	-5° 16.0'				O		B
					!,vB,vL,R w tail,mbM*8 - H III 1 ?;detached part of Orion Nebula								
NGC 1999		ORI		DN	2m x 2m	5h 36.4m	-6° 43.0'				O		
					*10,11 inv in neb - H IV 33								
NGC 2142		MON	5.0	MISC		6h 01.8m	-10° 36.0'						
					* (3 MON) inv in pL,F,neb								
NGC 2167		MON	6.6	MISC		6h 07.0m	-6° 12.0'						
					nebulous *7,am 3* - H IV 44								
NGC 2196		LEP	11.0	GAL	2.8m x 2.2m	6h 12.2m	-21° 48.0'						
					pF,pS,vIE,pmbM,st nr - H II 265								
NGC 2204		CMA	8.6	OC	13.0m	6h 15.5m	-18° 40.0'					80	
					Cl,L,pRi,IC - H VII 13;About 20 F *								
NGC 2207		CMA	10.8	GAL	4.2m x 2.6m	6h 16.4m	-21° 22.0'						
					pB,pL,mE87,pslbMRN,biN,ring surrounding - Double galaxy or interacting pair								
NGC 2215		MON	8.4	OC	11.0m	6h 20.8m	-7° 17.0'					40	
					Cl,cL,pRi,pC,st11.15 - H VII 20								
NGC 2232		MON	3.9	OC	30m	6h 28.0m	-4° 51.0'				O	20	B
					B* (10 MON) + Cl - H VIII 25								
NGC 2250		MON	8.9	OC	8.0m	6h 33.8m	-5° 05.0'					10	
					Cl,pRi,IC,iF,*8,12...14								

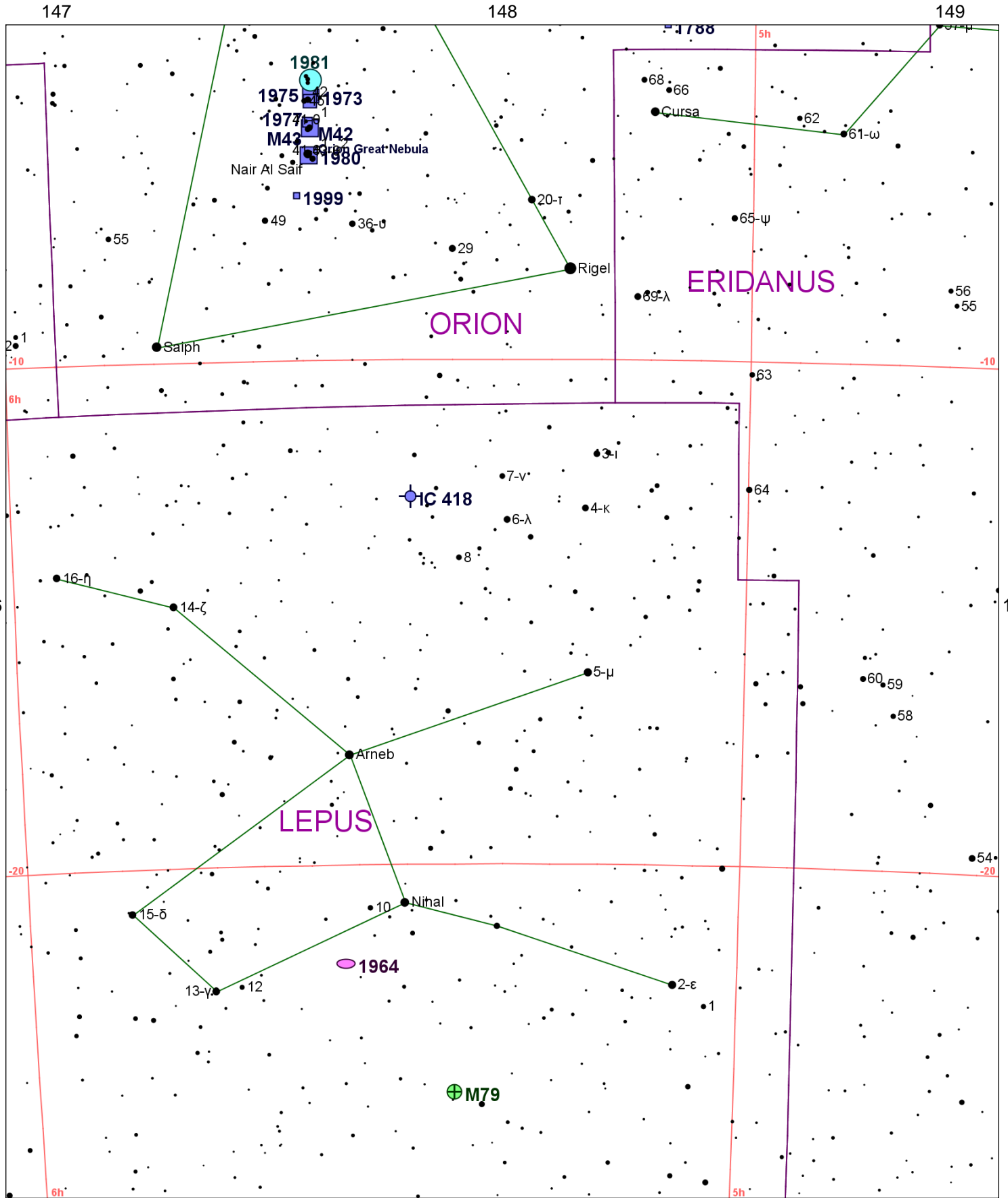
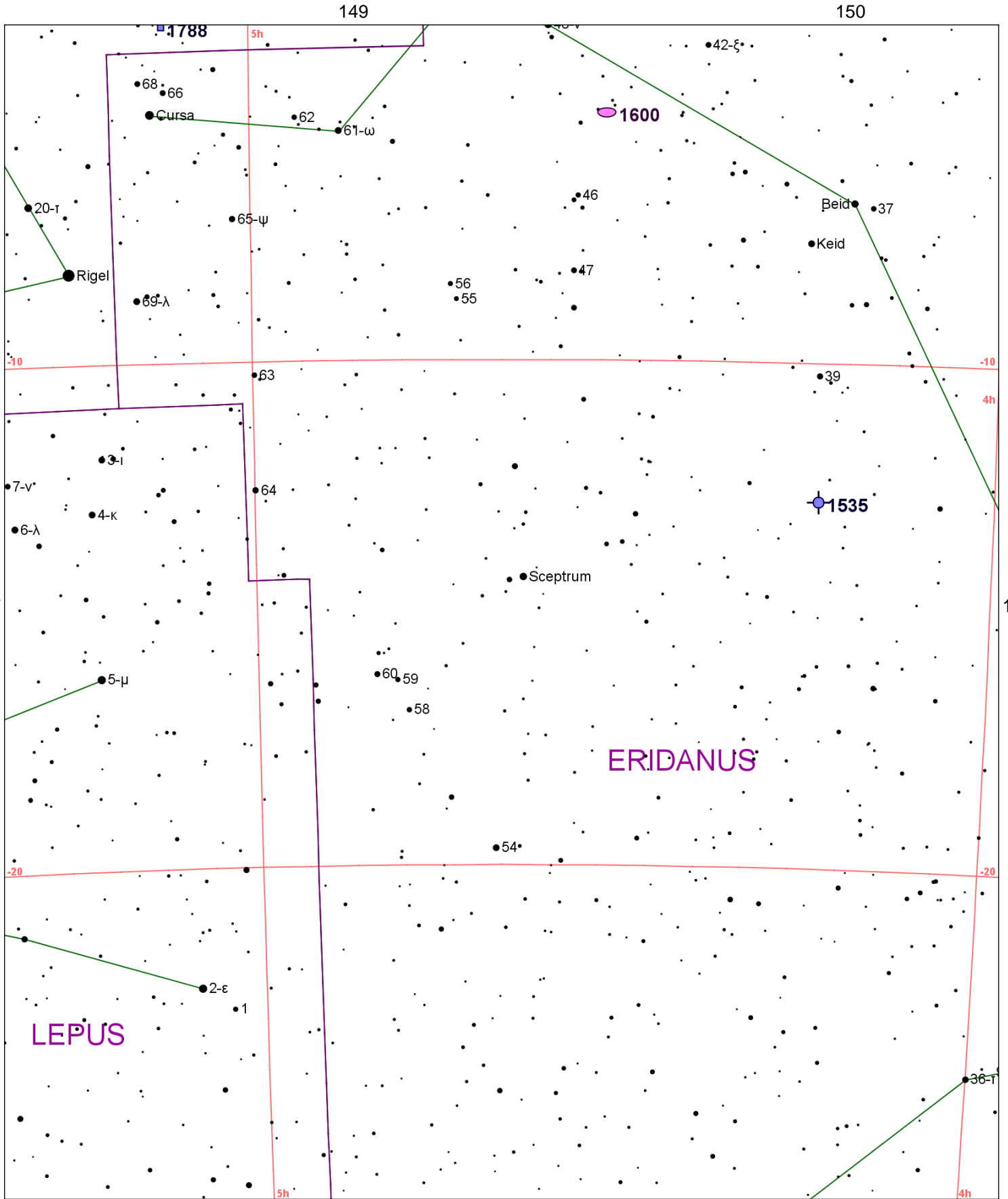


Chart 187													
Name	M	Const.	Mag.	Type	Size	R.A.	Decl.	C	R	S	O	# Stars	B
<b>Common</b>					<b>Notes</b>								
IC 418		LEP	10.7	PN	14s x 11s	5h 27.5m	-12° 42.0'						
					vS,B - 11 mag star in nebulous disk								
NGC 1788		ORI		DN	2m x 2m	5h 06.9m	-3° 20.0'		R25	S73	O		
					B,cL,R,bM,***; * 10 inv in the neby - H V 32								
NGC 1904	M79	LEP	8.4	GC	7.8m	5h 24.2m	-24° 31.0'				O		B
					pL,eRi,eC,rrr - Stars vF								
NGC 1964		LEP	10.8	GAL	5.5m x 2.1m	5h 33.4m	-21° 57.0'						
					F,L,R,vsymbM,*12,3 st inv - H IV 21								
NGC 1973		ORI	7.0	DN	5m x 5m	5h 35.1m	-4° 44.0'		R26	S74	O		
					*8,9 inv in neb								
NGC 1975		ORI	7.0	DN	10m x 5m	5h 35.3m	-4° 41.0'						
					B** inv in neb								
NGC 1976	M42	ORI	4.0	DN	90m x 60m	5h 35.3m	-5° 23.0'				O		B
Orion Great Nebula					!!!,Theta Orionis and the great nebula M42 - Trapezium* 6.7-7.7m;>50 var* inv;M 43 to NE								
NGC 1977		ORI	7.0	DN	20m x 10m	5h 35.3m	-4° 51.0'						
					42 Orionis neb - H V 30								
NGC 1980		ORI	2.5	DN	14m x 14m	5h 35.4m	-5° 55.0'						
					vF,vvL,44 Ori invl - H V 31								
NGC 1981		ORI	4.2	OC	25.0m	5h 35.2m	-4° 26.0'				O	20	B
					Cl,vB,IRi,st L,sc - In Ori OB1;incl D* Struve 750								
NGC 1982	M43	ORI	9.0	DN	20m x 15m	5h 35.5m	-5° 16.0'				O		B
					!,vB,vL,R w tail,mbM*8 - H III 1 ?;detached part of Orion Nebula								
NGC 1999		ORI		DN	2m x 2m	5h 36.4m	-6° 43.0'				O		
					*10,11 inv in neb - H IV 33								



**Chart 188**

Name	M	Const.	Mag.	Type	Size	R.A.	Decl.	C	R	S	O	# Stars	B
<b>Common</b>					<b>Notes</b>								
NGC 1535		ERI	10.4	PN	20s x 17s	4h 14.3m	-12° 44.0'		R22	S52	O		
vB,S,R,pS,vsbM,r - H IV 26;PK206-40.1													
NGC 1600		ERI	10.9	GAL	3.1m x 2.2m	4h 31.7m	-5° 05.0'						
pB,pL,R,gmbM - H I 158;RC1;brtst in grp;P w NGC 1601 at 1'6;NGC 1603 at 2'5													
NGC 1788		ORI		DN	2m x 2m	5h 06.9m	-3° 20.0'		R25	S73	O		
B,c,L,R,bM,***;* 10 inv in the neby - H V 32													



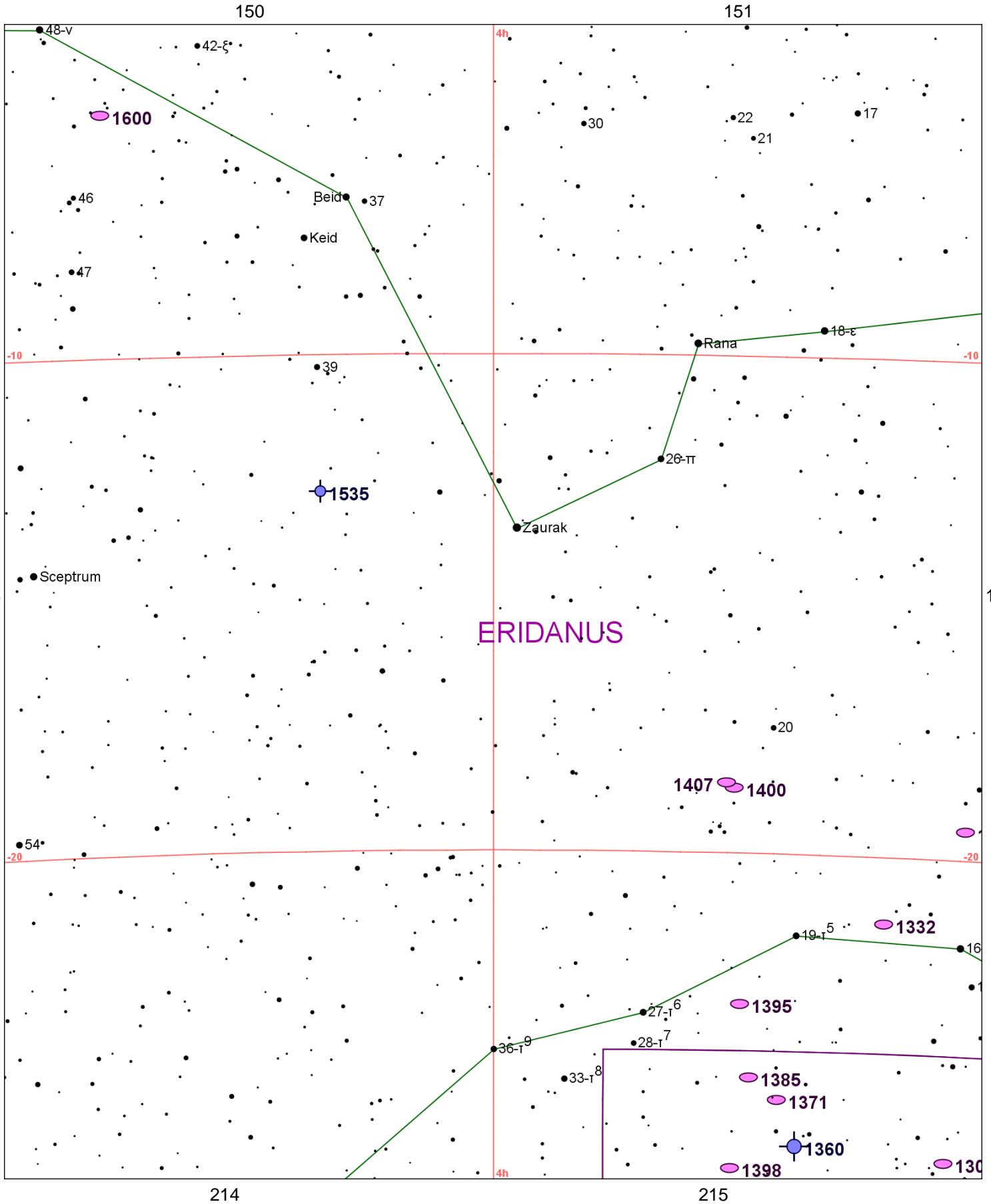
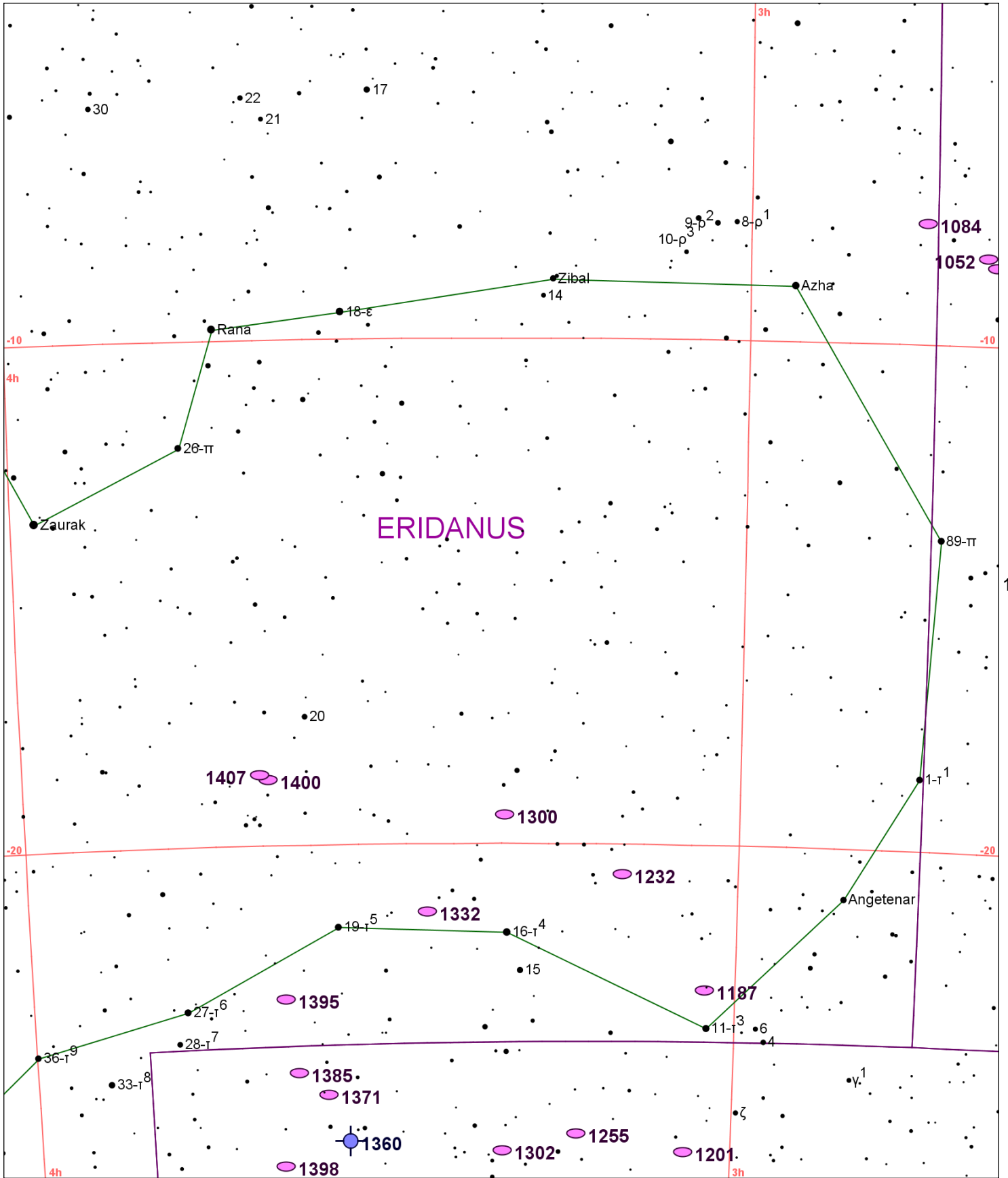


Chart 189

Name	M	Const.	Mag.	Type	Size	R.A.	Decl.	C	R	S	O	# Stars	B
<b>Common</b>					<b>Notes</b>								
NGC 1300		ERI	10.4	GAL	5.9m x 4.1m	3h 19.7m	-19° 25.0'				O		
					cB,vL,vmE,psvmbM								
NGC 1302		FOR	10.7	GAL	4.1m x 3.7m	3h 19.9m	-26° 04.0'						
					S,R,psvmbM,*9 np 1'								
NGC 1332		ERI	10.3	GAL	4m x 1.5m	3h 26.3m	-21° 20.0'				O		
					vB,S,E114,smbMN - H I 60								
NGC 1360		FOR	9.4	PN	360s x 270s	3h 33.2m	-25° 52.0'				O		
					*8in B,L neb,E ns								
NGC 1371		FOR	10.7	GAL	5.9m x 3.8m	3h 35.0m	-24° 56.0'						
					pB,pL,vIE,psbM - H II 262								
NGC 1385		FOR	10.9	GAL	3.6m x 2.2m	3h 37.5m	-24° 30.0'						
					pB,pS,R,gpmbM - H II 263								
NGC 1395		ERI	9.6	GAL	5.6m x 4.6m	3h 38.5m	-23° 02.0'				O		
					B,pS,E,psmbM - H I 58								
NGC 1398		FOR	9.7	GAL	7.2m x 5.2m	3h 38.9m	-26° 20.0'				O		
					cB,cL,R,vmbM								
NGC 1400		ERI	11.0	GAL	2.5m x 2.1m	3h 39.5m	-18° 41.0'						
					cB,pS,R,psmbM - H II 593;P w NGC 1407 nf								
NGC 1407		ERI	9.7	GAL	4.9m x 4.5m	3h 40.2m	-18° 35.0'						
					vB,L,R,svmbMN - H I 107								
NGC 1535		ERI	10.4	PN	20s x 17s	4h 14.3m	-12° 44.0'		R22	S52	O		
					vB,S,R,pS,vsbM,r - H IV 26;PK206-40.1								
NGC 1600		ERI	10.9	GAL	3.1m x 2.2m	4h 31.7m	-5° 05.0'						
					pB,pL,R,gmbM - H I 158;RC1;brtst in grp;P w NGC 1601 at 1'6;NGC 1603 at 2'5								

151

152



189

191

-20

-20

-10

-10

215

216

Chart 190													
Name	M	Const.	Mag.	Type	Size	R.A.	Decl.	C	R	S	O	# Stars	B
<b>Common</b>					<b>Notes</b>								
NGC 1042		CET	11.0	GAL	4.9m x 4m	2h 40.4m	-8° 26.0'						
					F,L,R,np of 2 - Spiral arms well defined								
NGC 1052		CET	10.5	GAL	2.8m x 2m	2h 41.1m	-8° 15.0'				O		
					B,p,L,R,mbM*12 - H I 63								
NGC 1084		ERI	10.7	GAL	3.5m x 2.1m	2h 46.0m	-7° 35.0'				O		
					vB,p,L,E,gpmbM - H I 64								
NGC 1187		ERI	10.8	GAL	5.6m x 3.8m	3h 02.6m	-22° 52.0'						
					pF,c,L,pmE,gbM*16,r - H III 245;Multi arm spiral								
NGC 1201		FOR	10.7	GAL	3.3m x 1.9m	3h 04.1m	-26° 04.0'				O		
					cB,p,S,vIE,r,S* nr - H I 109								
NGC 1232		ERI	9.9	GAL	7.1m x 6.3m	3h 09.8m	-20° 35.0'		R21	S51	O		B
					pB,c,L,R,gbM,r - H II 258;Excellent face-on spiral								
NGC 1255		FOR	10.9	GAL	4.2m x 2.7m	3h 13.5m	-25° 44.0'						
					F,p,L,F* close p								
NGC 1300		ERI	10.4	GAL	5.9m x 4.1m	3h 19.7m	-19° 25.0'				O		
					cB,v,L,vmE,psvmbM								
NGC 1302		FOR	10.7	GAL	4.1m x 3.7m	3h 19.9m	-26° 04.0'						
					S,R,psvmbM,*9 np 1'								
NGC 1332		ERI	10.3	GAL	4m x 1.5m	3h 26.3m	-21° 20.0'				O		
					vB,S,E114,smbMN - H I 60								
NGC 1360		FOR	9.4	PN	360s x 270s	3h 33.2m	-25° 52.0'				O		
					*8in B,L neb,E ns								
NGC 1371		FOR	10.7	GAL	5.9m x 3.8m	3h 35.0m	-24° 56.0'						
					pB,p,L,vIE,psbM - H II 262								
NGC 1385		FOR	10.9	GAL	3.6m x 2.2m	3h 37.5m	-24° 30.0'						
					pB,p,S,R,gpmbM - H II 263								
NGC 1395		ERI	9.6	GAL	5.6m x 4.6m	3h 38.5m	-23° 02.0'				O		
					B,p,S,E,psmbM - H I 58								
NGC 1398		FOR	9.7	GAL	7.2m x 5.2m	3h 38.9m	-26° 20.0'				O		
					cB,c,L,R,vmbM								
NGC 1400		ERI	11.0	GAL	2.5m x 2.1m	3h 39.5m	-18° 41.0'						
					cB,p,S,R,psmbM - H II 593;P w NGC 1407 nf								
NGC 1407		ERI	9.7	GAL	4.9m x 4.5m	3h 40.2m	-18° 35.0'						
					vB,L,R,svmbMN - H I 107								

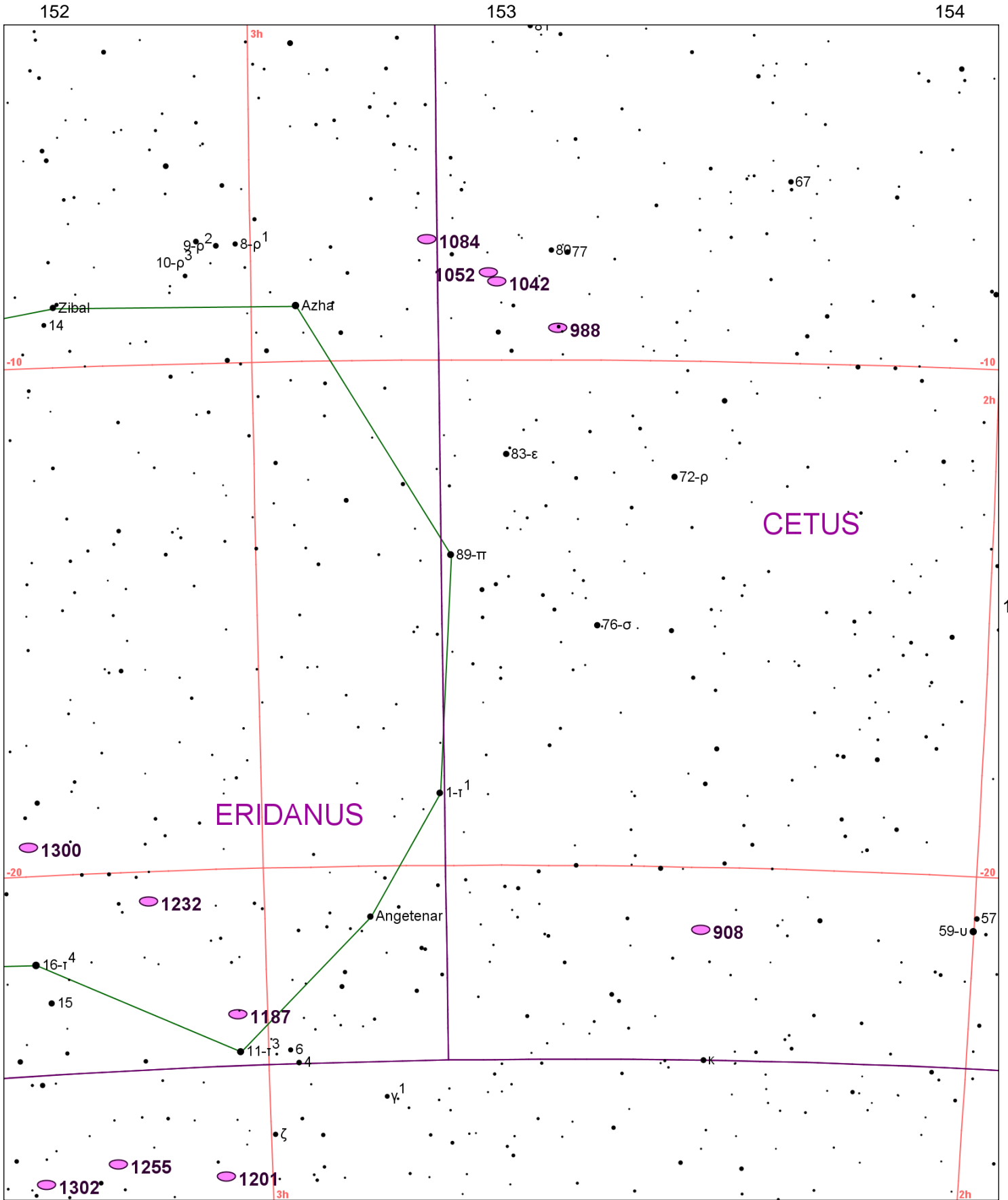


Chart 191													
Name	M	Const.	Mag.	Type	Size	R.A.	Decl.	C	R	S	O	# Stars	B
<b>Common</b>					<b>Notes</b>								
NGC 908		CET	10.2	GAL	6.1m x 2.7m	2h 23.1m	-21° 14.0'						
					cB,vL,E - H I 153								
NGC 988		CET	11.0	GAL	4.6m x 2.5m	2h 35.5m	-9° 21.0'						
					neb *7.5m								
NGC 1042		CET	11.0	GAL	4.9m x 4m	2h 40.4m	-8° 26.0'						
					F,L,R,np of 2 - Spiral arms well defined								
NGC 1052		CET	10.5	GAL	2.8m x 2m	2h 41.1m	-8° 15.0'				O		
					B,pL,R,mbM*12 - H I 63								
NGC 1084		ERI	10.7	GAL	3.5m x 2.1m	2h 46.0m	-7° 35.0'				O		
					vB,pL,E,gpmbM - H I 64								
NGC 1187		ERI	10.8	GAL	5.6m x 3.8m	3h 02.6m	-22° 52.0'						
					pF,cL,pmE,gbM*16,r - H III 245;Multi arm spiral								
NGC 1201		FOR	10.7	GAL	3.3m x 1.9m	3h 04.1m	-26° 04.0'				O		
					cB,pS,vIE,r,S* nr - H I 109								
NGC 1232		ERI	9.9	GAL	7.1m x 6.3m	3h 09.8m	-20° 35.0'		R21	S51	O		B
					pB,cL,R,gbM,r - H II 258;Excellent face-on spiral								
NGC 1255		FOR	10.9	GAL	4.2m x 2.7m	3h 13.5m	-25° 44.0'						
					F,pL,F* close p								
NGC 1300		ERI	10.4	GAL	5.9m x 4.1m	3h 19.7m	-19° 25.0'				O		
					cB,vL,vmE,psvmbM								
NGC 1302		FOR	10.7	GAL	4.1m x 3.7m	3h 19.9m	-26° 04.0'						
					S,R,psvmbM,*9 np 1'								

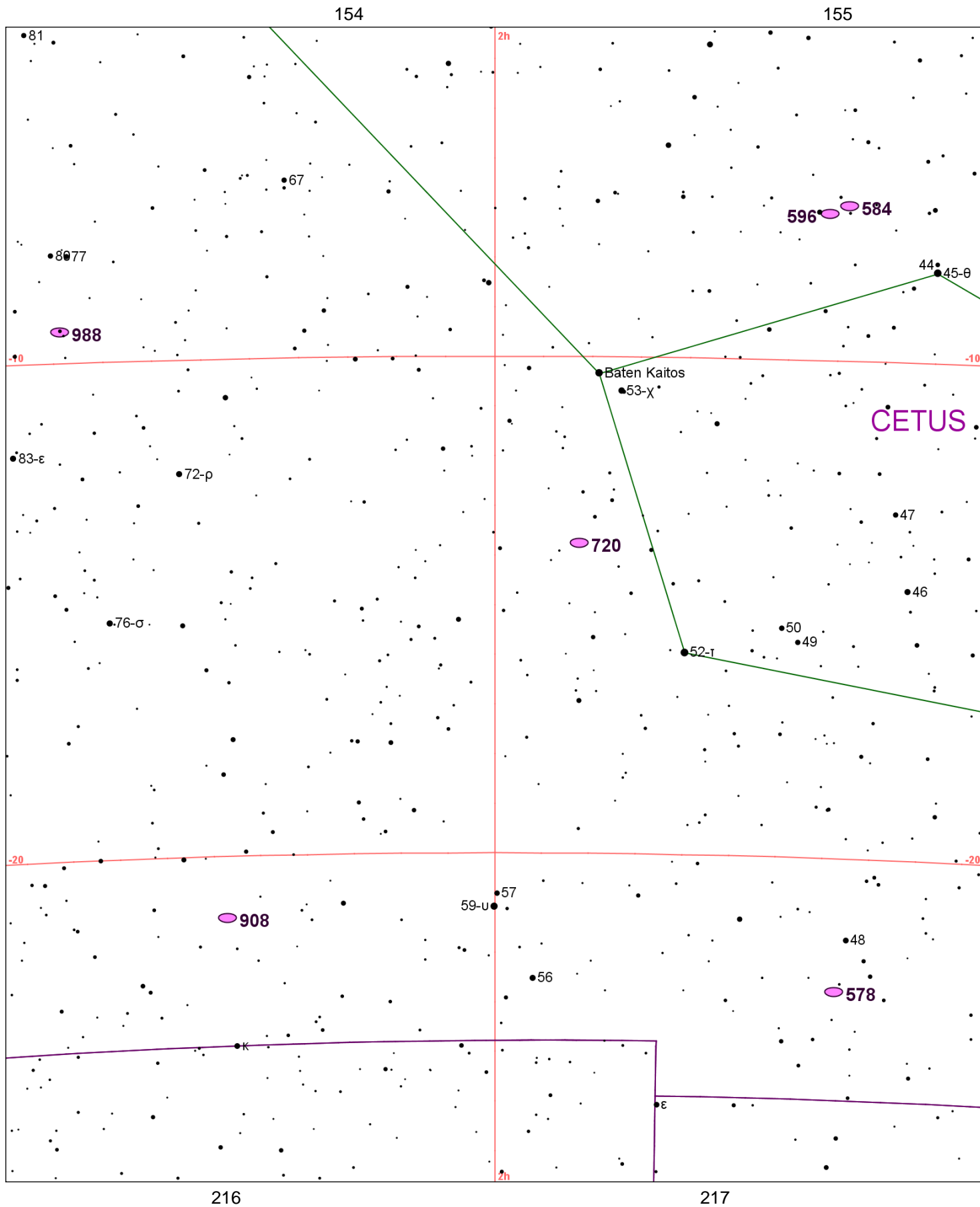


Chart 192

Name	M	Const.	Mag.	Type	Size	R.A.	Decl.	C	R	S	O	# Stars	B
<b>Common</b>					<b>Notes</b>								
NGC 578		CET	10.9	GAL	4.8m x 3m	1h 30.5m	-22° 40.0'						
					B,L,pmE,gpmbM								
NGC 584		CET	10.5	GAL	3.3m x 1.9m	1h 31.3m	-6° 52.0'				O		
					vB,pL,R,mbM,p of 2								
NGC 596		CET	10.9	GAL	2.8m x 2.1m	1h 32.9m	-7° 02.0'						
					pB,R,bM,r,*6f12' - H II 4								
NGC 720		CET	10.2	GAL	4.4m x 2.2m	1h 53.0m	-13° 44.0'						
					cB,pL,lE,psmbM - H I 105								
NGC 908		CET	10.2	GAL	6.1m x 2.7m	2h 23.1m	-21° 14.0'						
					cB,vL,E - H I 153								
NGC 988		CET	11.0	GAL	4.6m x 2.5m	2h 35.5m	-9° 21.0'						
					neb *7.5m								