

Chart 169													
Name	M	Const.	Mag.	Type	Size	R.A.	Decl.	C	R	S	O	# Stars	B
<b>Common</b>					<b>Notes</b>								
B 72		OPH		DN	30m	17h 23.5m	-23° 38.0'						
The Snake					13"-pL,pDark,thin winding Dneb at 100X - 1.5 deg nnf Theta Oph								
Bochum 14		SGR	9.3	OC		18h 02.0m	-23° 42.0'					10	
NGC 6235		OPH	10.2	GC	1.9m	16h 53.4m	-22° 11.0'						
					pB,cL,iR,rrr,*14..16 - H II 584								
NGC 6254	M10	OPH	6.6	GC	12.2m	16h 57.1m	-4° 06.0'				O		B
					B,vL,R,gvmBM,rrr - Lord Rosse reported dark lane in cluster								
NGC 6273	M19	OPH	7.2	GC	5.3m	17h 02.6m	-26° 16.0'				O		B
					vB,L,R,vCM,rrr - One of the most oblate globulars								
NGC 6284		OPH	9.0	GC	2.7m	17h 04.5m	-24° 46.0'						
					B,L,R,CM,st16... - H VI 11								
NGC 6287		OPH	9.2	GC	2.7m	17h 05.2m	-22° 42.0'						
					cB,L,R,gpmCM,rrr - H II 195								
NGC 6293		OPH	8.2	GC	3.5m	17h 10.2m	-26° 35.0'				O		B
					vB,L,R,psbM,st16 - H VI 12								
NGC 6309		OPH	11.6	PN	20s x 10s	17h 14.1m	-12° 55.0'				O		
Box Nebula					B,S,bet 2*v nr								
NGC 6325		OPH	10.7	GC	1.6m	17h 18.0m	-23° 46.0'						
					pF,L,R,rr								
NGC 6333	M9	OPH	7.9	GC	5.5m	17h 19.2m	-18° 31.0'				O		B
					B,L,R,eCM,rrr - Dark neb B64 prominent to west								
NGC 6342		OPH	9.9	GC	3.0m	17h 21.2m	-19° 35.0'						
					cB,pS,IE,eR - H I 149								
NGC 6355		OPH	9.6	GC	6.1m	17h 24.0m	-26° 21.0'						
					cF,L,R,gbM,rrr - H I 46								
NGC 6356		OPH	8.4	GC	3.5m	17h 23.6m	-17° 49.0'						
					vB,cL,vqvmBM,rrr - H I 48								
NGC 6366		OPH	10.0	GC	5.8m	17h 27.7m	-5° 05.0'						
					F,L,vlbM								
NGC 6369		OPH	11.0	PN	30s x 29s	17h 29.3m	-23° 46.0'		R91	S70	O		
Little Ghost Nebula					Annular,pB,S,R								
NGC 6401		OPH	9.5	GC	1m	17h 38.6m	-23° 55.0'						
					pB,pL,R,*12F inv - H I 44								
NGC 6440		SGR	9.7	GC	1.7m	17h 48.9m	-20° 22.0'						
					pB,pL,R,bM - H I 150;* eF								
NGC 6445		SGR	13.0	PN	35s x 30s	17h 49.3m	-20° 01.0'		R102	S89	O		
					pB,pS,R,gbM,r,*15 np - Little Gem								
NGC 6469		SGR	8.2	OC	12.0m	17h 53.2m	-22° 17.0'					50	
					Cl,pRi,in Milky Way								
NGC 6494	M23	SGR	5.5	OC	27.0m	17h 57.1m	-18° 59.0'				O	150	B
					Cl,B,vL,pRi,IC,*10.. - 100 members to 13th mag								
NGC 6507		SGR	9.6	OC	7.0m	17h 59.8m	-17° 27.0'					35	
					Cl,pS,IRi,IC - H VIII 53								
NGC 6514	M20	SGR	6.3	DN	28.0m	18h 02.7m	-22° 58.0'				O	67	
Trifid Nebula					vB,vL,Trifid,D* inv - sev dark lanes;H IV 41 & V 10;D* HN 40 invl								
PK 7+ 1.1		SGR	11.0	PN	6.6s	17h 55.1m	-21° 45.0'						
PK 8+ 6.1		OPH	11.0	PN	<10s	17h 38.9m	-18° 18.0'						

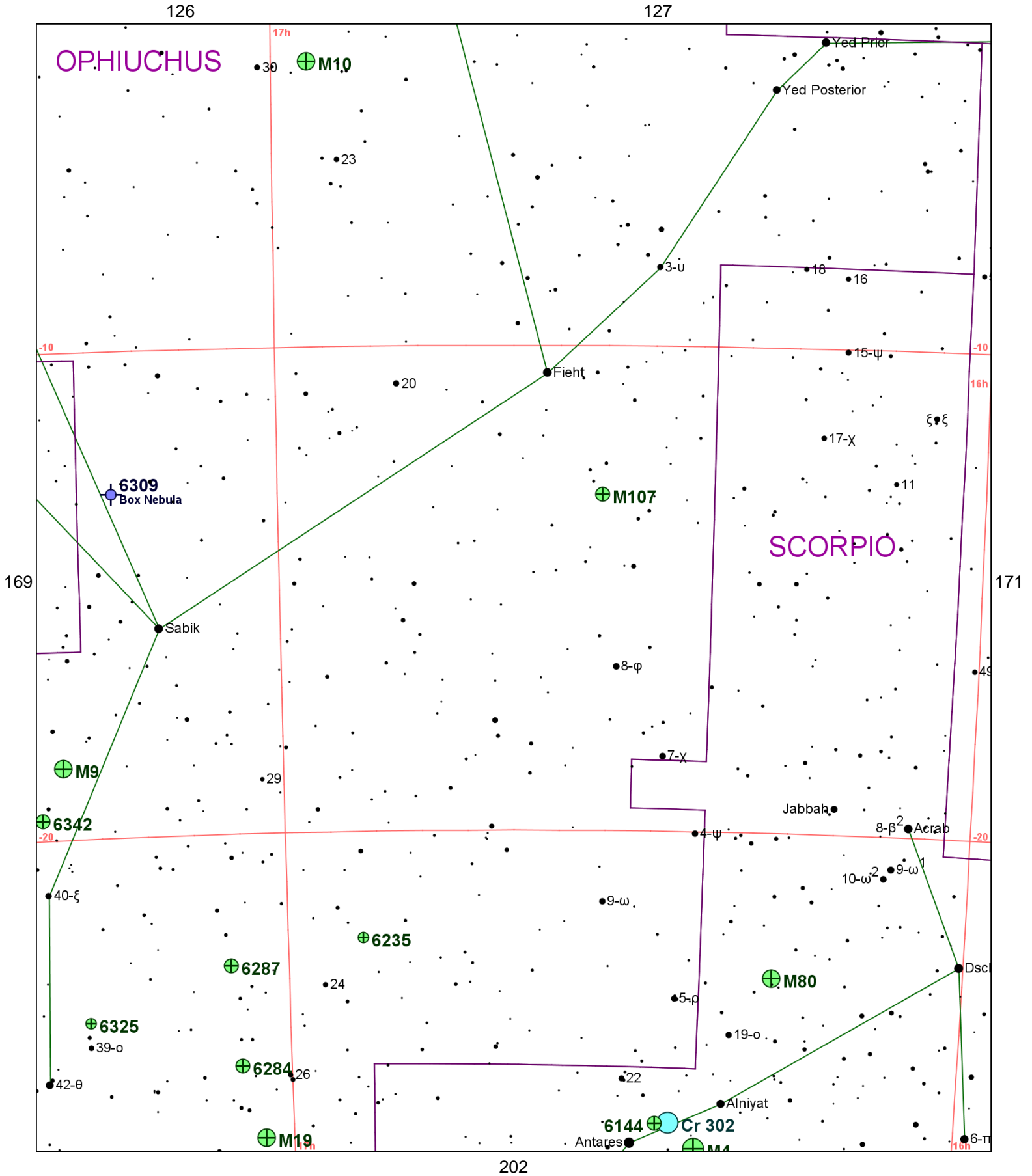


Chart 170													
Name	M	Const.	Mag.	Type	Size	R.A.	Decl.	C	R	S	O	# Stars	B
<b>Common</b>					<b>Notes</b>								
Cr 302		SCO	1.0	OC	500m	16h 26.0m	-26° 00.0'						
					Antares moving cluster								
NGC 6093	M80	SCO	7.2	GC	5.1m	16h 17.0m	-22° 59.0'				O		B
					vB,L,vmbM,rrr,st 14... - Extremely rich and compressed								
NGC 6121	M4	SCO	5.9	GC	26.3m	16h 23.6m	-26° 32.0'				O		B
					Cl,8 or 10 B* in line,rrr - Look for central bar structure								
NGC 6144		SCO	9.1	GC	6.2m	16h 27.2m	-26° 01.0'						
					Cl,cL,mC,gbM,rrr - H VI 10								
NGC 6171	M107	OPH	8.1	GC	3.3m	16h 32.5m	-13° 03.0'				O		
					L,vRI,vmC,R,rrr - H VI 40								
NGC 6235		OPH	10.2	GC	1.9m	16h 53.4m	-22° 11.0'						
					pB,cL,iR,rrr,*14..16 - H II 584								
NGC 6254	M10	OPH	6.6	GC	12.2m	16h 57.1m	-4° 06.0'				O		B
					B,vL,R,gvmBM,rrr - Lord Rosse reported dark lane in cluster								
NGC 6273	M19	OPH	7.2	GC	5.3m	17h 02.6m	-26° 16.0'				O		B
					vB,L,R,vCM,rrr - One of the most oblate globulars								
NGC 6284		OPH	9.0	GC	2.7m	17h 04.5m	-24° 46.0'						
					B,L,R,CM,st16... - H VI 11								
NGC 6287		OPH	9.2	GC	2.7m	17h 05.2m	-22° 42.0'						
					cB,L,R,gpmCM,rrr - H II 195								
NGC 6309		OPH	11.6	PN	20s x 10s	17h 14.1m	-12° 55.0'				O		
					Box Nebula B,S,bet 2*v nr								
NGC 6325		OPH	10.7	GC	1.6m	17h 18.0m	-23° 46.0'						
					pF,L,R,rr								
NGC 6333	M9	OPH	7.9	GC	5.5m	17h 19.2m	-18° 31.0'				O		B
					B,L,R,eCM,rrr - Dark neb B64 prominent to west								
NGC 6342		OPH	9.9	GC	3.0m	17h 21.2m	-19° 35.0'						
					cB,pS,IE,eR - H I 149								

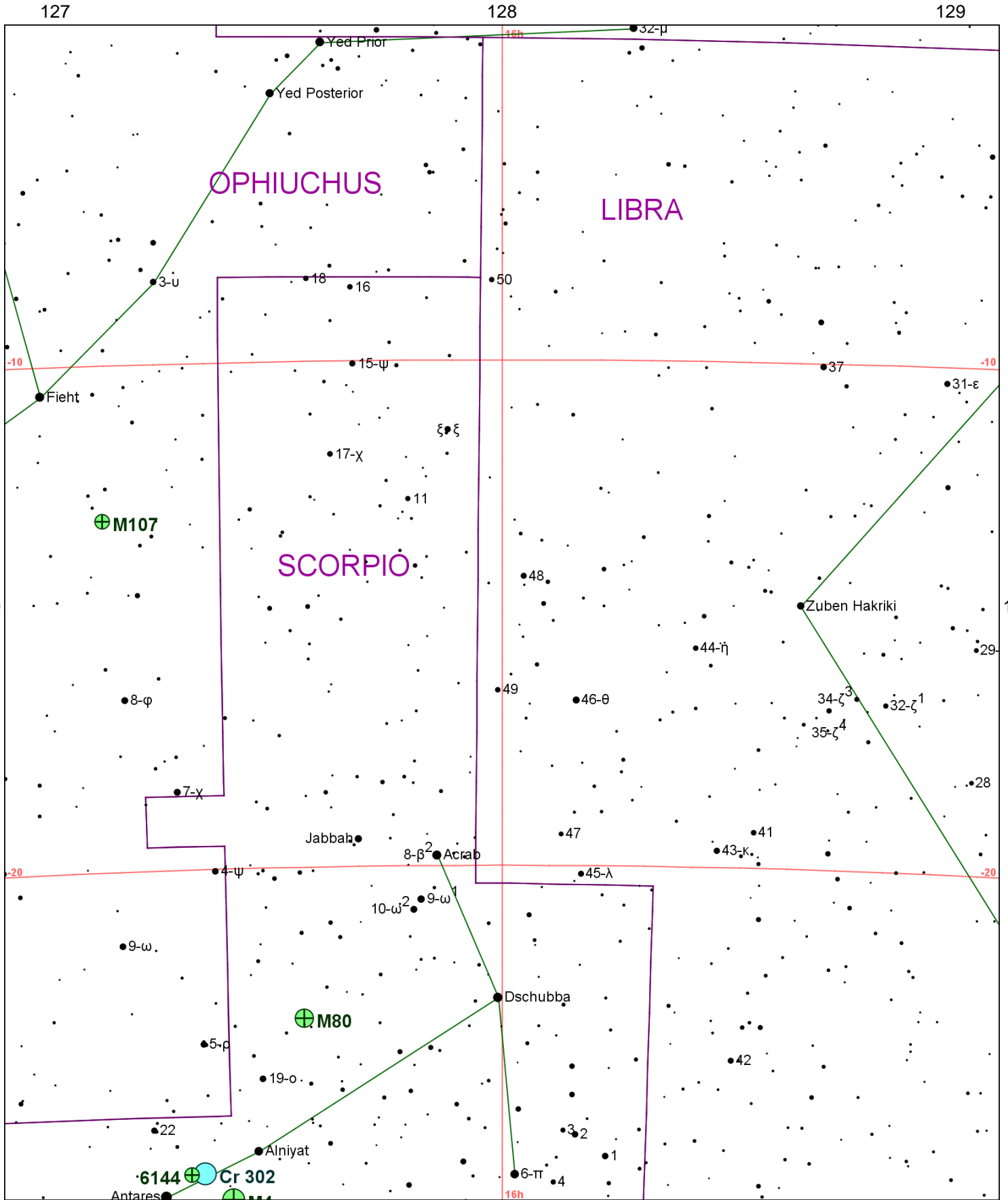
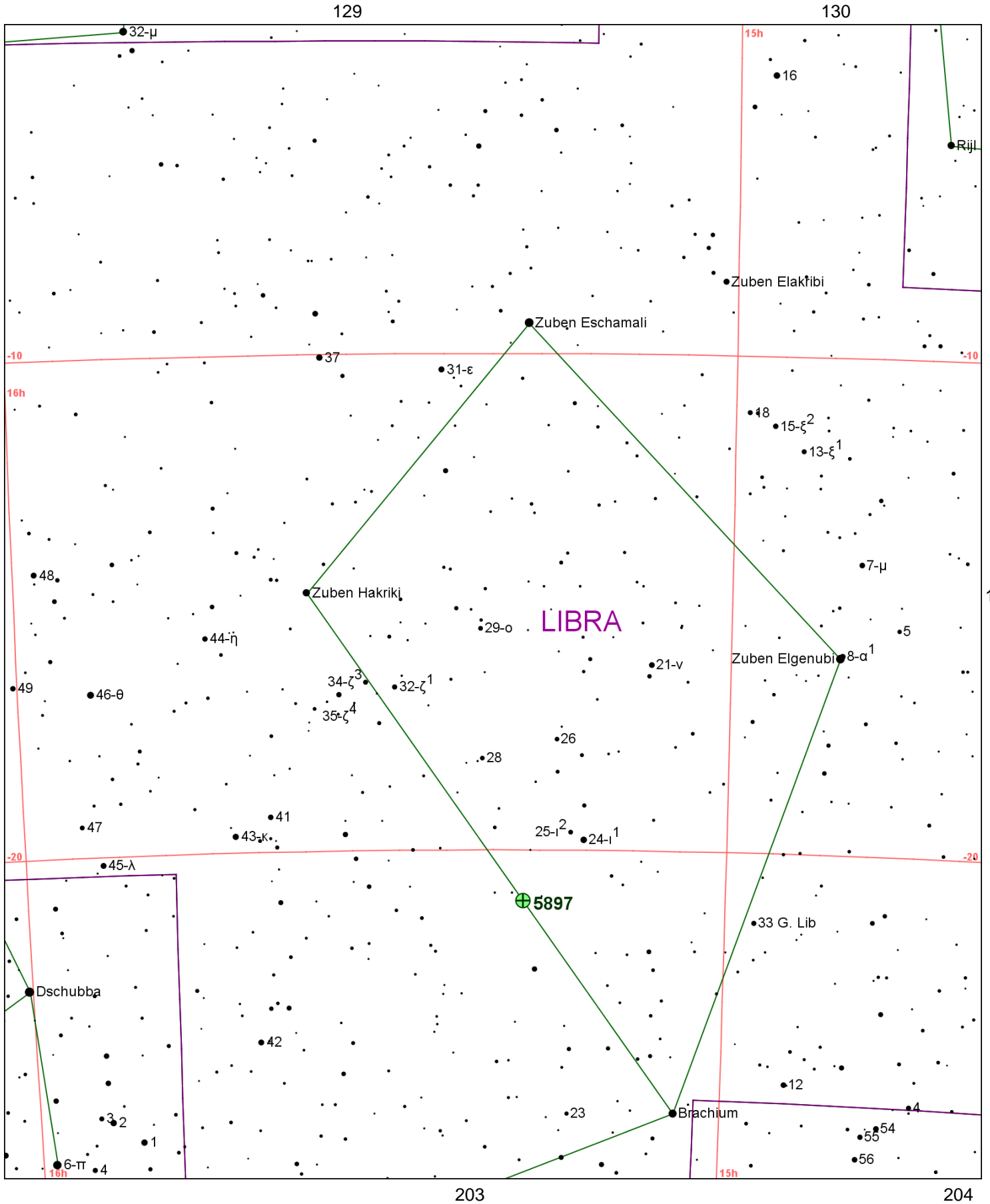


Chart 171

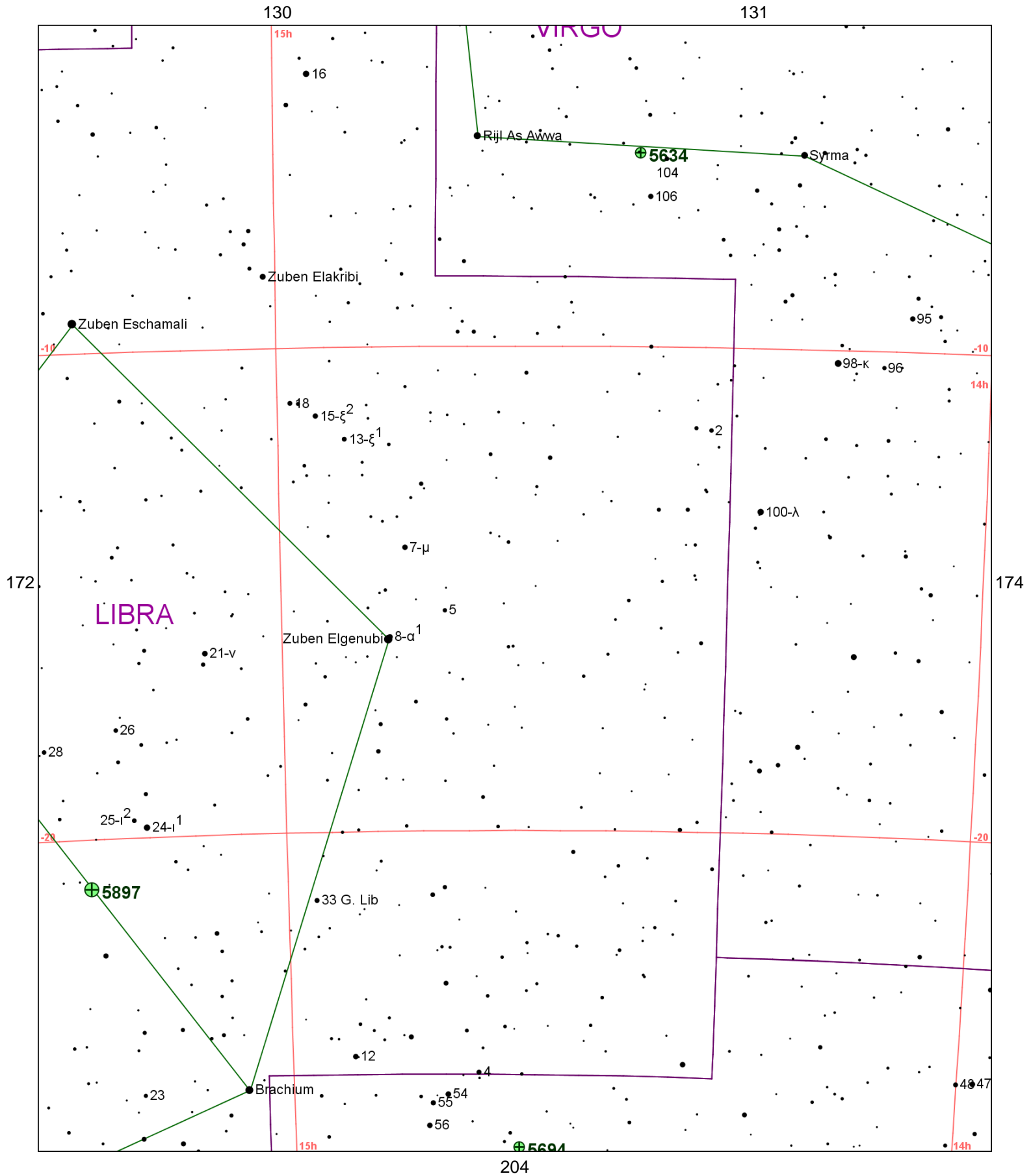
Name	M	Const.	Mag.	Type	Size	R.A.	Decl.	C	R	S	O	# Stars	B
<b>Common</b>					<b>Notes</b>								
Cr 302		SCO	1.0	OC	500m	16h 26.0m	-26° 00.0'						
Antares moving cluster													
NGC 6093	M80	SCO	7.2	GC	5.1m	16h 17.0m	-22° 59.0'				O		B
vB,L,vmbM,rrr,st 14... - Extremely rich and compressed													
NGC 6121	M4	SCO	5.9	GC	26.3m	16h 23.6m	-26° 32.0'				O		B
Cl,8 or 10 B* in line,rrr - Look for central bar structure													
NGC 6144		SCO	9.1	GC	6.2m	16h 27.2m	-26° 01.0'						
Cl,cL,mC,gbM,rrr - H VI 10													
NGC 6171	M107	OPH	8.1	GC	3.3m	16h 32.5m	-13° 03.0'				O		
L,vRi,vmC,R,rrr - H VI 40													



**Chart 172**

Name	M	Const.	Mag.	Type	Size	R.A.	Decl.	C	R	S	O	# Stars	B
<b>Common</b>					<b>Notes</b>								
NGC 5897		LIB	8.6	GC	8.7m	15h 17.4m	-21° 01.0'				O		
					pF,L,viR,vgbM,rrr - H VI 19								



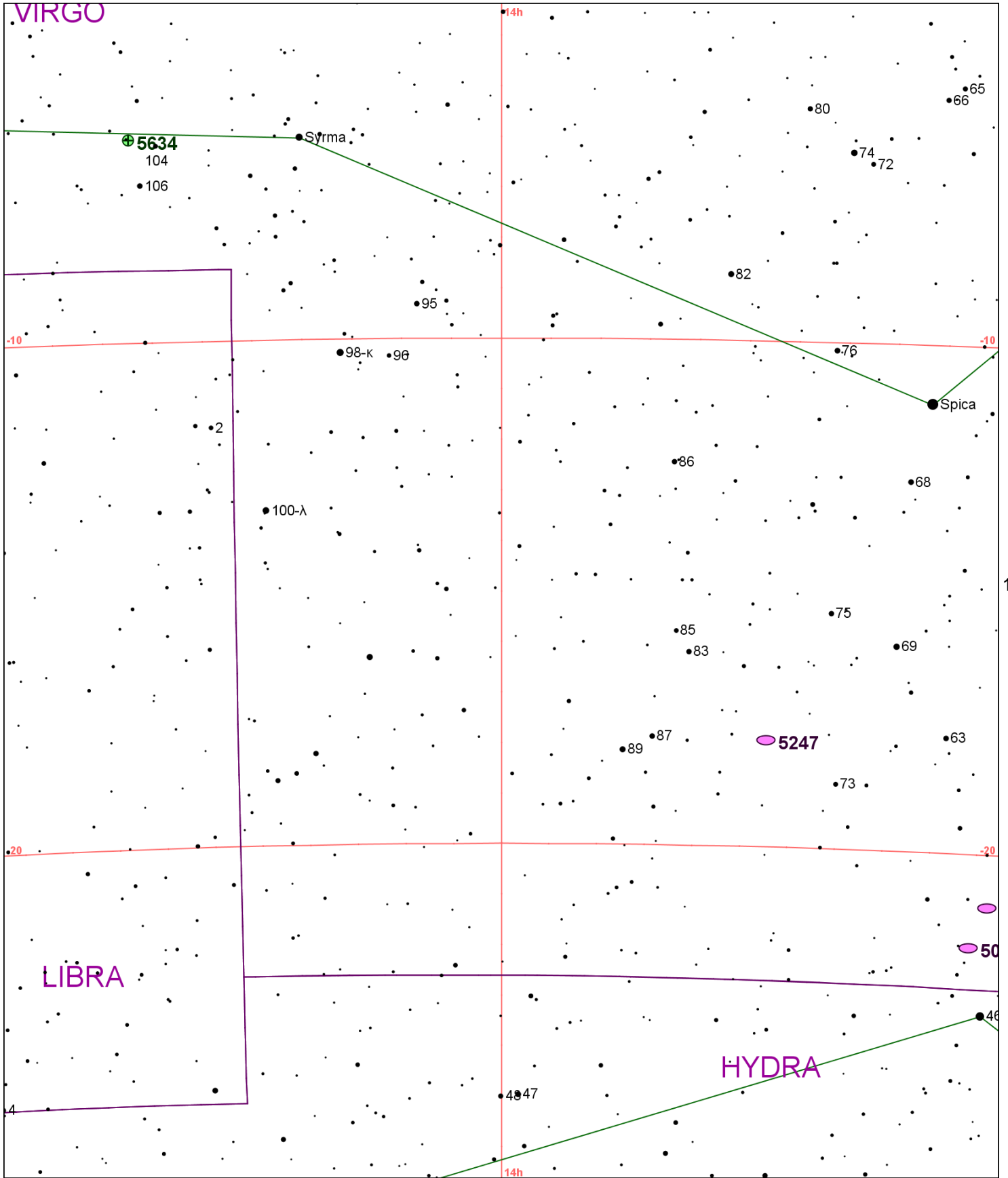


**Chart 173**

Name	M	Const.	Mag.	Type	Size	R.A.	Decl.	C	R	S	O	# Stars	B
<b>Common</b>					<b>Notes</b>								
NGC 5634		VIR	11.0	GC	4.9m	14h 29.6m	-5° 59.0'				O		
					vB,cL,R,gbM,rrr,st 19...,*8 sf - H I 70;11 mag star on E edge								
NGC 5694		HYA	10.2	GC	3.6m	14h 39.6m	-26° 32.0'	C66					
					cB,cS,R,psbM,r,* 9.5 sp - H II 196;Rich w eF stars;distant globular								
NGC 5897		LIB	8.6	GC	8.7m	15h 17.4m	-21° 01.0'				O		
					pF,L,viR,vgbM,rrr - H VI 19								

131

132



173

175

204

205

**Chart 174**

Name	M	Const.	Mag.	Type	Size	R.A.	Decl.	C	R	S	O	# Stars	B
<b>Common</b>					<b>Notes</b>								
NGC 5068		VIR	10.0	GAL	7.3m x 6.4m	13h 18.9m	-21° 02.0'						
					F,L,iR,bM - H II 312;Coarse spiral;NGC 5087 in field								
NGC 5084		VIR	10.5	GAL	10.6m x 1.8m	13h 20.3m	-21° 50.0'						
					cB,cS,vIE90 - H II 313								
NGC 5247		VIR	10.0	GAL	5.4m x 4.9m	13h 38.0m	-17° 53.0'						
					cF,vL,vg,psmbM,LN - H II 297;Fine S-shaped double arm spiral								
NGC 5634		VIR	11.0	GC	4.9m	14h 29.6m	-5° 59.0'				O		
					vB,cL,R,gbM,rrr,st 19....,*8 sf - H I 70;11 mag star on E edge								

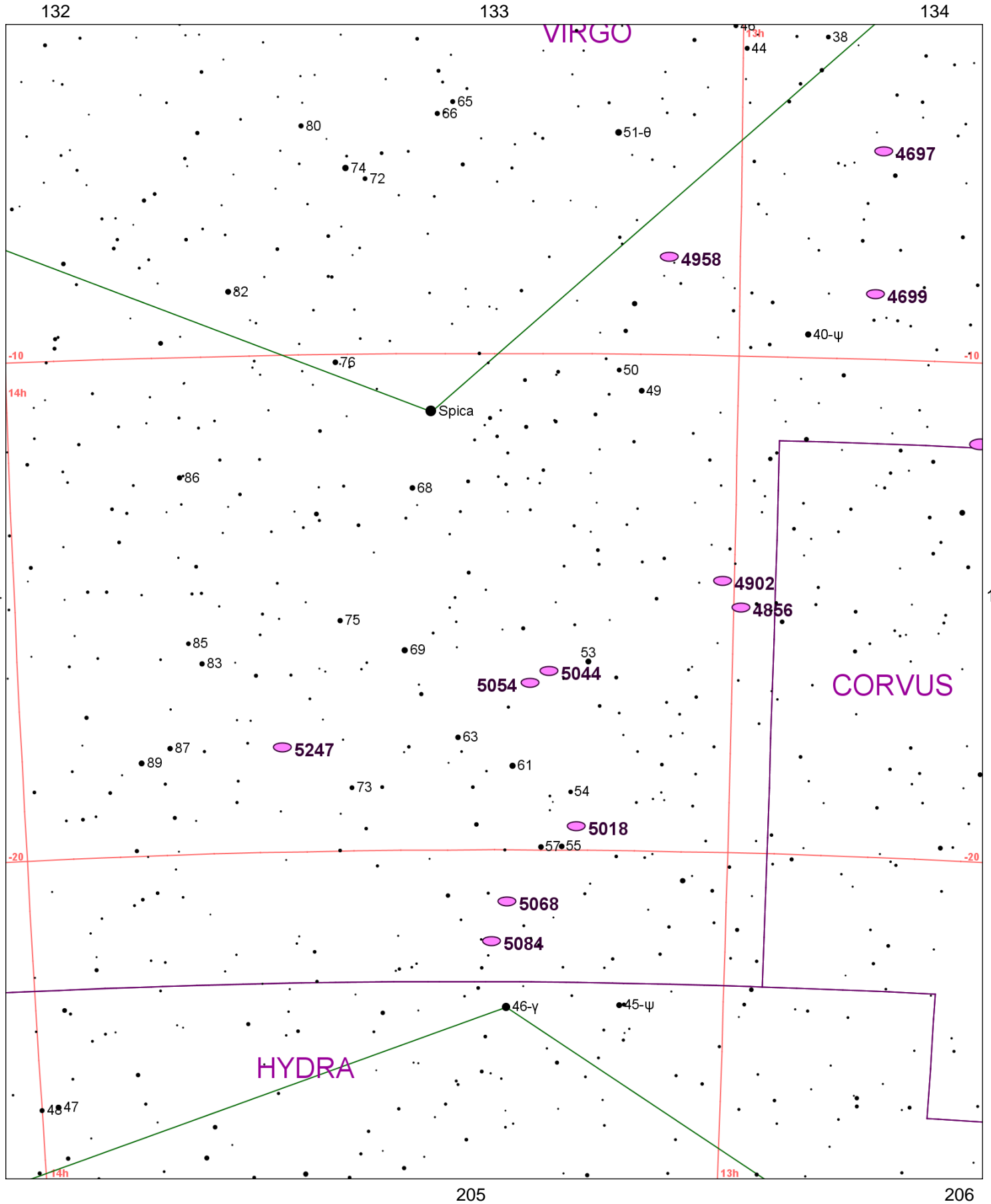


Chart 175

Name	M	Const.	Mag.	Type	Size	R.A.	Decl.	C	R	S	O	# Stars	B
<b>Common</b>					<b>Notes</b>								
NGC 4594	M104	VIR	8.0	GAL	8.6m x 4.2m	12h 40.0m	-11° 37.0'				O		B
Sombrero Galaxy					!vB,vL,eE92,vsmbMN - H I 43;dark equatorial lane								
NGC 4697		VIR	9.2	GAL	6.2m x 4.5m	12h 48.6m	-5° 48.0'	C52			O		
					vB,L,IE45,smbMN - H I 39								
NGC 4699		VIR	9.5	GAL	3.8m x 2.8m	12h 49.0m	-8° 40.0'		R83	S108	O		
					vB,R,vmbMrN,r - H I 129								
NGC 4856		VIR	10.5	GAL	3.9m x 1.4m	12h 59.4m	-15° 03.0'				O		
					B,R,psmbM,*13 np - H I 68								
NGC 4902		VIR	10.9	GAL	2.9m x 2.6m	13h 01.0m	-14° 31.0'						
					pB,pL,iR,st nr - H I 69;Theta shaped center;triskelion arm pattern								
NGC 4958		VIR	10.7	GAL	3.9m x 1.4m	13h 05.8m	-8° 01.0'				O		
					vB,pS,E,bMBN - H I 130;Lenticular								
NGC 5018		VIR	10.8	GAL	3.4m x 2.6m	13h 13.0m	-19° 31.0'						
					cB,S,R,mbMpBN - H II 746								
NGC 5044		VIR	10.8	GAL	2.6m x 2.6m	13h 15.4m	-16° 23.0'						
					pB,pL,R,bM - H II 511;NGC 5037 and two other F galaxies in field								
NGC 5054		VIR	10.9	GAL	5.1m x 2.8m	13h 17.0m	-16° 38.0'						
					F,pS,iR - H II 513;Three branch spiral								
NGC 5068		VIR	10.0	GAL	7.3m x 6.4m	13h 18.9m	-21° 02.0'						
					F,L,iR,bM - H II 312;Coarse spiral;NGC 5087 in field								
NGC 5084		VIR	10.5	GAL	10.6m x 1.8m	13h 20.3m	-21° 50.0'						
					cB,cS,vIE90 - H II 313								
NGC 5247		VIR	10.0	GAL	5.4m x 4.9m	13h 38.0m	-17° 53.0'						
					cF,vL,vg,psmbM,LN - H II 297;Fine S-shaped double arm spiral								

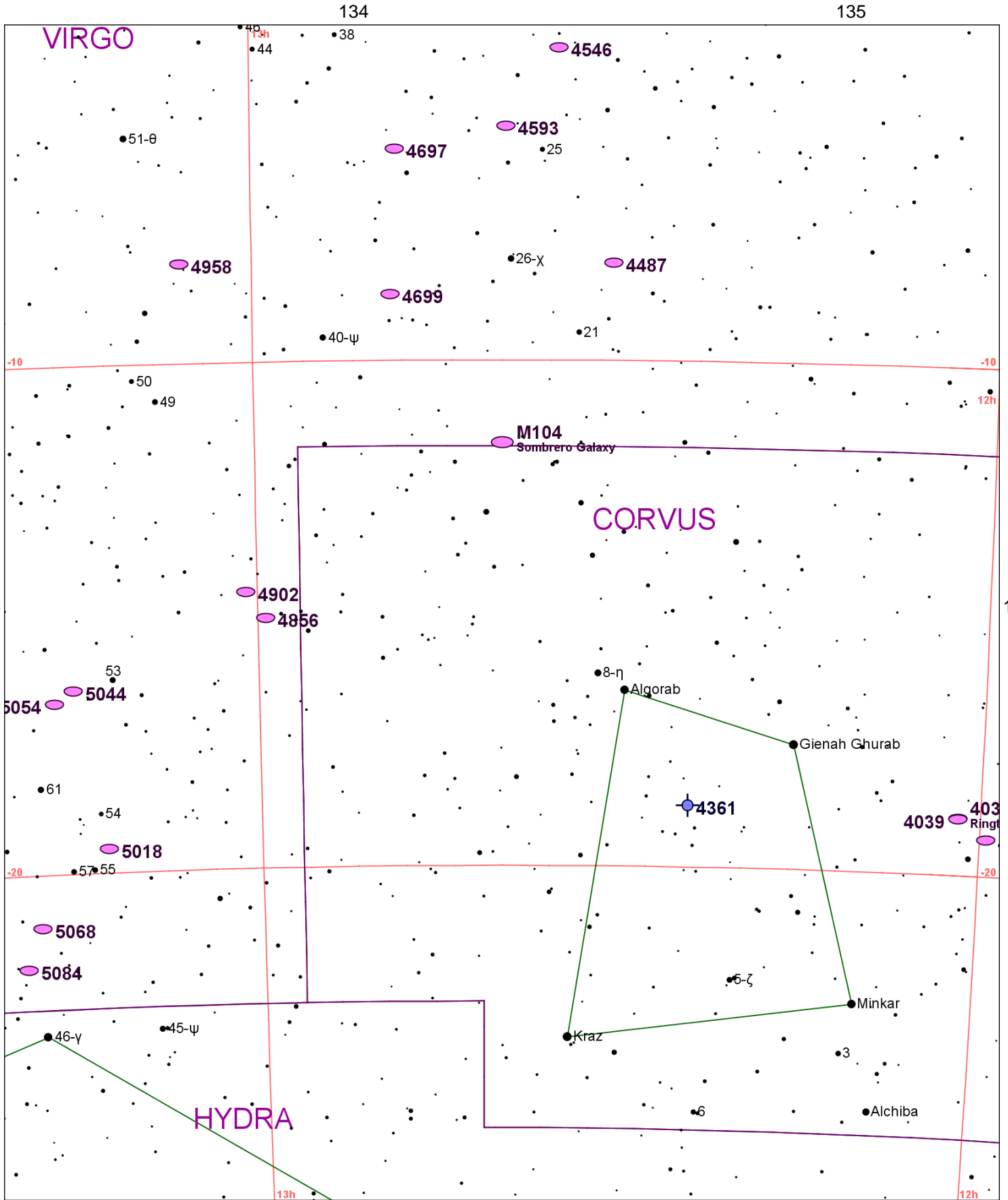


Chart 176													
Name	M	Const.	Mag.	Type	Size	R.A.	Decl.	C	R	S	O	# Stars	B
<b>Common</b>					<b>Notes</b>								
NGC 4027		CRV	11.1	GAL	3.3m x 2.4m	11h 59.5m	-19° 16.0'				O		
					pF,pL,R,rr,st16 - H II 296								
NGC 4038		CRV	10.3	GAL	3.4m x 2m	12h 01.9m	-18° 52.0'	C60	R74		O		
Ringtail Galaxy					pB,cL,R,vgbM - H IV 28;two filaments								
NGC 4039		CRV	10.6	GAL	3.3m x 1.7m	12h 01.9m	-18° 53.0'	C61					
					pF,pL - H II 282								
NGC 4361		CRV	10.9	PN	80s	12h 24.5m	-18° 47.0'		R75	S32	O		
					vB,L,R,vsmbMN,r - H I 65;PK294+43.1								
NGC 4487		VIR	10.9	GAL	4m x 2.8m	12h 31.1m	-8° 03.0'						
					F,vL,er - H II 776;Coarse structured spiral								
NGC 4546		VIR	10.3	GAL	3.3m x 1.6m	12h 35.5m	-3° 48.0'				O		
					vB,cL,pmE78,vsmbMN - H I 160								
NGC 4593		VIR	10.9	GAL	3.7m x 2.6m	12h 39.7m	-5° 21.0'						
					pB,cL,E,sbMN=*,vBN in smooth bar - H II 183;Extended central mass w extensive outer arms;NGC 4602 nr								
NGC 4594	M104	VIR	8.0	GAL	8.6m x 4.2m	12h 40.0m	-11° 37.0'				O		B
Sombrero Galaxy					lvB,vL,eE92,vsmbMN - H I 43;dark equatorial lane								
NGC 4697		VIR	9.2	GAL	6.2m x 4.5m	12h 48.6m	-5° 48.0'	C52			O		
					vB,L,IE45,smbMN - H I 39								
NGC 4699		VIR	9.5	GAL	3.8m x 2.8m	12h 49.0m	-8° 40.0'		R83	S108	O		
					vB,R,vmbMrN,r - H I 129								
NGC 4856		VIR	10.5	GAL	3.9m x 1.4m	12h 59.4m	-15° 03.0'				O		
					B,R,psmbM,*13 np - H I 68								
NGC 4902		VIR	10.9	GAL	2.9m x 2.6m	13h 01.0m	-14° 31.0'						
					pB,pL,iR,st nr - H I 69;Theta shaped center;triskelion arm pattern								
NGC 4958		VIR	10.7	GAL	3.9m x 1.4m	13h 05.8m	-8° 01.0'				O		
					vB,pS,E,bMBN - H I 130;Lenticular								
NGC 5018		VIR	10.8	GAL	3.4m x 2.6m	13h 13.0m	-19° 31.0'						
					cB,S,R,mbMpBN - H II 746								
NGC 5044		VIR	10.8	GAL	2.6m x 2.6m	13h 15.4m	-16° 23.0'						
					pB,pL,R,bM - H II 511;NGC 5037 and two other F galaxies in field								
NGC 5054		VIR	10.9	GAL	5.1m x 2.8m	13h 17.0m	-16° 38.0'						
					F,pS,iR - H II 513;Three branch spiral								
NGC 5068		VIR	10.0	GAL	7.3m x 6.4m	13h 18.9m	-21° 02.0'						
					F,L,iR,bM - H II 312;Coarse spiral;NGC 5087 in field								
NGC 5084		VIR	10.5	GAL	10.6m x 1.8m	13h 20.3m	-21° 50.0'						
					cB,cS,vIE90 - H II 313								