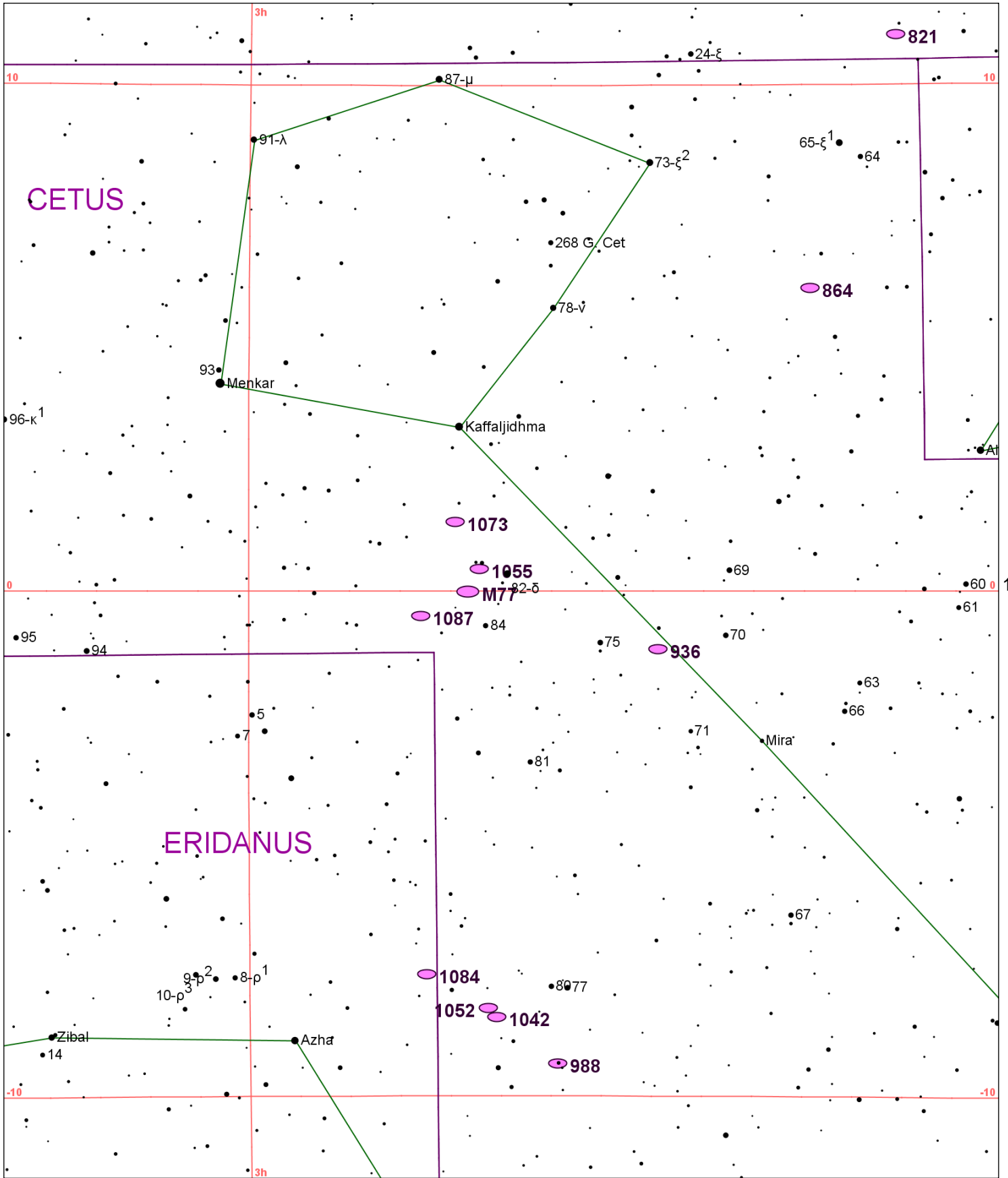


110



191

Chart 153

Name	M	Const.	Mag.	Type	Size	R.A.	Decl.	C	R	S	O	# Stars	B
Common					Notes								
NGC 821		ARI	10.7	GAL	2.4m x 1.7m	2h 08.4m	11° 00.0'						
pB,vS,vIE,svmbM,* np - H I 152;UGC 1631													
NGC 864		CET	10.9	GAL	4.7m x 3.2m	2h 15.5m	6° 00.0'						
eF,cL,R,gbM - H III 457;* 12m sf nucl 35"													
NGC 936		CET	10.1	GAL	4.3m x 3.8m	2h 27.6m	-1° 09.0'		R16	S24	O		
vB,vL,R,mbMN,p of 2 - H IV 23;Thick central bar;P w NGC 941 12' foll													
NGC 988		CET	11.0	GAL	4.6m x 2.5m	2h 35.5m	-9° 21.0'						
neb *7.5m													
NGC 1042		CET	11.0	GAL	4.9m x 4m	2h 40.4m	-8° 26.0'						
F,L,R,np of 2 - Spiral arms well defined													
NGC 1052		CET	10.5	GAL	2.8m x 2m	2h 41.1m	-8° 15.0'				O		
B,pL,R,mbM*12 - H I 63													
NGC 1055		CET	10.6	GAL	7.6m x 3m	2h 41.8m	0° 27.0'						
pF,cL,IE80,bM,*11n1' - H I 1= II 6;Nearly edge-on spiral w equatorial dust lane													
NGC 1068	M77	CET	8.9	GAL	7.3m x 6.3m	2h 42.7m	-0° 01.0'				O		B
vB,pL,iR,sbMrrN - Seyfert;brtst in NGC 1068 grp													
NGC 1073		CET	11.0	GAL	4.9m x 4.3m	2h 43.7m	1° 23.0'						
vF,L,lbM,er - H III 455;NGC 1068 group													
NGC 1084		ERI	10.7	GAL	3.5m x 2.1m	2h 46.0m	-7° 35.0'				O		
vB,pL,E,gpmbM - H I 64													
NGC 1087		CET	10.9	GAL	3.9m x 2.3m	2h 46.4m	-0° 30.0'						
pB,cL,IE,mbM - H II 466;In NGC1068 grp;P w NGC1090 @15' and NGC1094 @ 20'													

Chart 154													
Name	M	Const.	Mag.	Type	Size	R.A.	Decl.	C	R	S	O	# Stars	B
Common					Notes								
NGC 584		CET	10.5	GAL	3.3m x 1.9m	1h 31.3m	-6° 52.0'				O		
					vB,pL,R,mbM,p of 2								
NGC 596		CET	10.9	GAL	2.8m x 2.1m	1h 32.9m	-7° 02.0'						
					pB,R,bM,r,*6f12' - H II 4								
NGC 676		PSC	10.5	GAL	4.2m x 1.6m	1h 49.0m	5° 54.0'						
					vF,E161,sbM*9 - H IV 42;Brightest in chain including NGC 693;NGC 706								
NGC 821		ARI	10.7	GAL	2.4m x 1.7m	2h 08.4m	11° 00.0'						
					pB,vS,vIE,svmbM,* np - H I 152;UGC 1631								
NGC 864		CET	10.9	GAL	4.7m x 3.2m	2h 15.5m	6° 00.0'						
					eF,cL,R,gbM - H III 457;* 12m sf nucl 35"								
NGC 936		CET	10.1	GAL	4.3m x 3.8m	2h 27.6m	-1° 09.0'		R16	S24	O		
					vB,vL,R,mbMN,p of 2 - H IV 23;Thick central bar;P w NGC 941 12' foll								
NGC 988		CET	11.0	GAL	4.6m x 2.5m	2h 35.5m	-9° 21.0'						
					neb *7.5m								
NGC 1042		CET	11.0	GAL	4.9m x 4m	2h 40.4m	-8° 26.0'						
					F,L,R,np of 2 - Spiral arms well defined								
NGC 1052		CET	10.5	GAL	2.8m x 2m	2h 41.1m	-8° 15.0'				O		
					B,pL,R,mbM*12 - H I 63								
NGC 1055		CET	10.6	GAL	7.6m x 3m	2h 41.8m	0° 27.0'						
					pF,cL,IE80,bM,*11n1' - H I 1= II 6;Nearly edge-on spiral w equatorial dust lane								
NGC 1068	M77	CET	8.9	GAL	7.3m x 6.3m	2h 42.7m	-0° 01.0'				O		B
					vB,pL,iR,sbMrrN - Seyfert;brtst in NGC 1068 grp								
NGC 1073		CET	11.0	GAL	4.9m x 4.3m	2h 43.7m	1° 23.0'						
					vF,L,lbM,er - H III 455;NGC 1068 group								
NGC 1084		ERI	10.7	GAL	3.5m x 2.1m	2h 46.0m	-7° 35.0'				O		
					vB,pL,E,gpmbM - H I 64								
NGC 1087		CET	10.9	GAL	3.9m x 2.3m	2h 46.4m	-0° 30.0'						
					pB,cL,IE,mbM - H II 466;In NGC1068 grp;P w NGC1090 @15' and NGC1094 @ 20'								

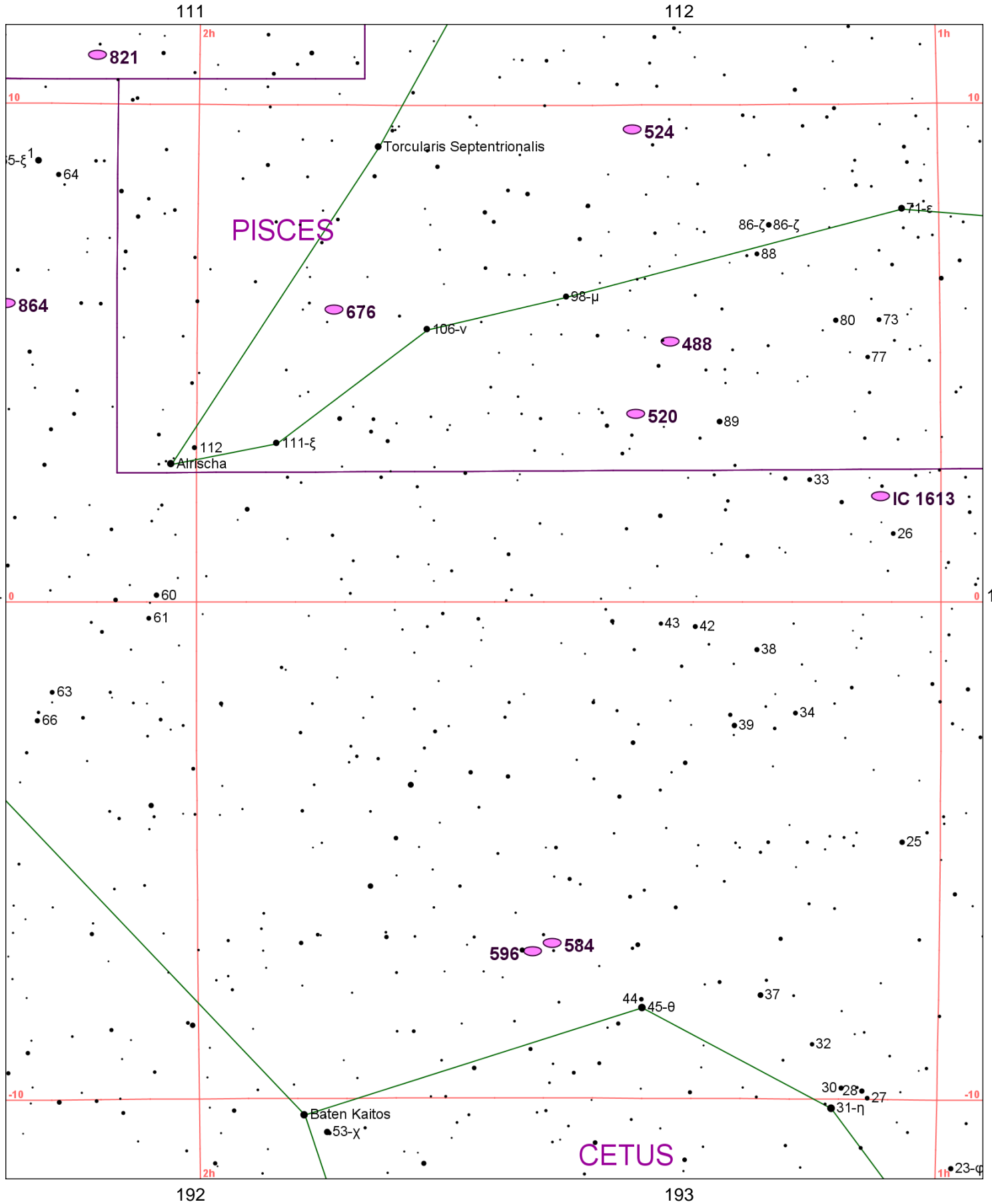


Chart 155

Name	M	Const.	Mag.	Type	Size	R.A.	Decl.	C	R	S	O	# Stars	B
Common					Notes								
IC 1613		CET	9.2	GAL	16.6m x 14.9m	1h 04.9m	2° 08.0'	C51					
					F,eL - Member of Local Group								
NGC 488		PSC	10.3	GAL	5.4m x 3.9m	1h 21.8m	5° 15.0'				O		
					pB,L,R,svmbM,*8F10' - delicate spiral pattern								
NGC 520		PSC	11.4	GAL	3.7m x 1.5m	1h 24.6m	3° 48.0'				O		
					F,cL,E 137 deg - H III 253;Strongly Peculiar;M82 type galaxy;UGC 966								
NGC 524		PSC	10.3	GAL	3.2m x 3.2m	1h 24.8m	9° 32.0'				O		
					vB,pL,mbM,4S* nr - H I 151								
NGC 584		CET	10.5	GAL	3.3m x 1.9m	1h 31.3m	-6° 52.0'				O		
					vB,pL,R,mbM,p of 2								
NGC 596		CET	10.9	GAL	2.8m x 2.1m	1h 32.9m	-7° 02.0'						
					pB,R,bM,r,*6f12' - H II 4								
NGC 676		PSC	10.5	GAL	4.2m x 1.6m	1h 49.0m	5° 54.0'						
					vF,E161,sbM*9 - H IV 42;Brightest in chain including NGC 693;NGC 706								
NGC 821		ARI	10.7	GAL	2.4m x 1.7m	2h 08.4m	11° 00.0'						
					pB,vS,vIE,svmbM,* np - H I 152;UGC 1631								
NGC 864		CET	10.9	GAL	4.7m x 3.2m	2h 15.5m	6° 00.0'						
					eF,cL,R,gbM - H III 457;* 12m sf nucl 35"								

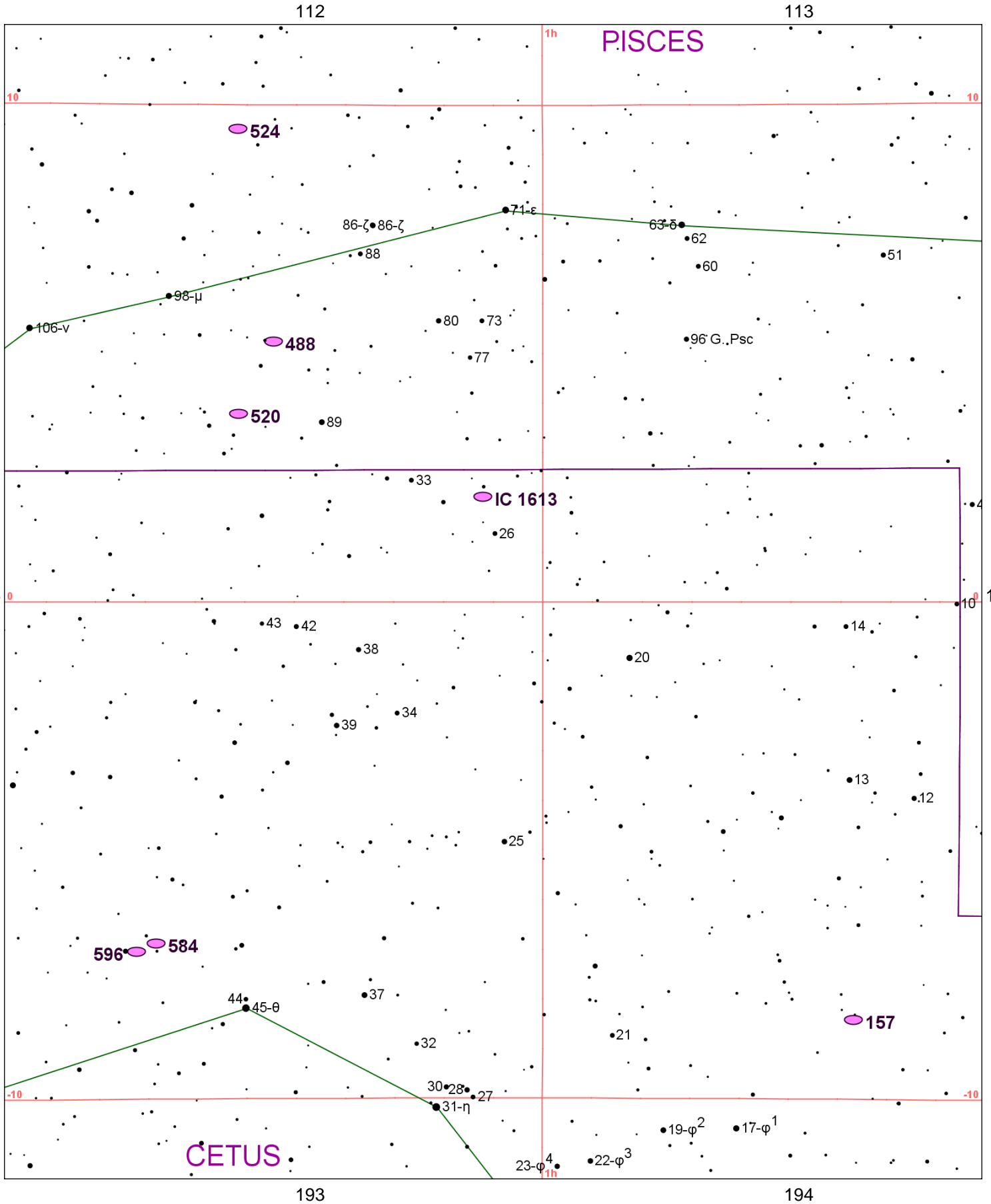
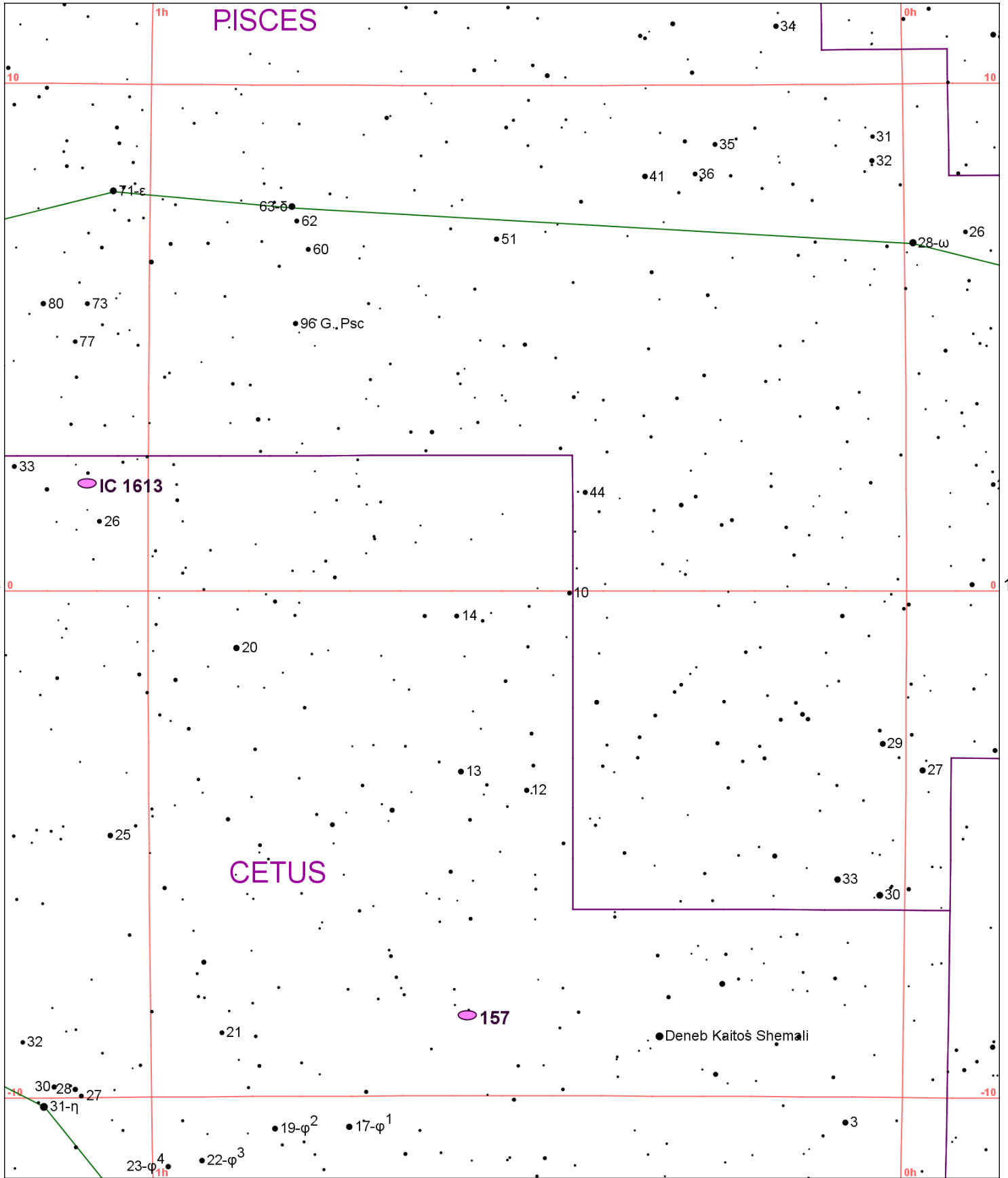


Chart 156

Name	M	Const.	Mag.	Type	Size	R.A.	Decl.	C	R	S	O	# Stars	B
Common					Notes								
IC 1613		CET	9.2	GAL	16.6m x 14.9m	1h 04.9m	2° 08.0'	C51					
					F,eL - Member of Local Group								
NGC 157		CET	10.4	GAL	4.1m x 2.7m	0h 34.8m	-8° 24.0'						
					pB,L,E,bet 2 cB st - H II 3								
NGC 488		PSC	10.3	GAL	5.4m x 3.9m	1h 21.8m	5° 15.0'				O		
					pB,L,R,svmbM,*8F10' - delicate spiral pattern								
NGC 520		PSC	11.4	GAL	3.7m x 1.5m	1h 24.6m	3° 48.0'				O		
					F,cL,E 137 deg - H III 253;Strongly Peculiar;M82 type galaxy;UGC 966								
NGC 524		PSC	10.3	GAL	3.2m x 3.2m	1h 24.8m	9° 32.0'				O		
					vB,pL,mbM,4S* nr - H I 151								
NGC 584		CET	10.5	GAL	3.3m x 1.9m	1h 31.3m	-6° 52.0'				O		
					vB,pL,R,mbM,p of 2								
NGC 596		CET	10.9	GAL	2.8m x 2.1m	1h 32.9m	-7° 02.0'						
					pB,R,bM,r,*6f12' - H II 4								

113



194

Chart 157

Name	M	Const.	Mag.	Type	Size	R.A.	Decl.	C	R	S	O	# Stars	B
Common					Notes								
IC 1613		CET	9.2	GAL	16.6m x 14.9m	1h 04.9m	2° 08.0'	C51					
					F,eL - Member of Local Group								
NGC 157		CET	10.4	GAL	4.1m x 2.7m	0h 34.8m	-8° 24.0'						
					pB,L,E,bet 2 cB st - H II 3								

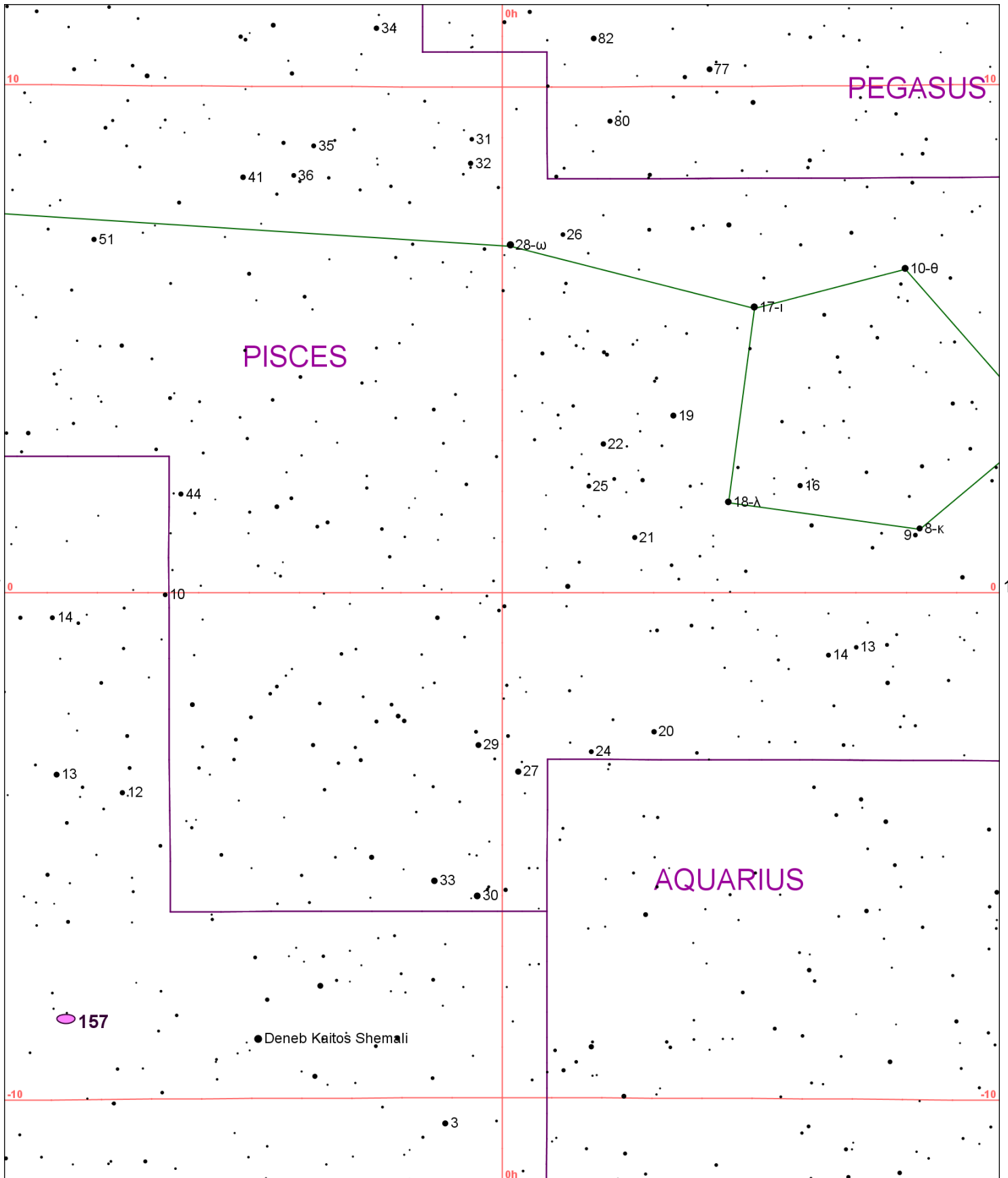


Chart 158

Name	M	Const.	Mag.	Type	Size	R.A.	Decl.	C	R	S	O	# Stars	B
Common					Notes								
NGC 157		CET	10.4	GAL	4.1m x 2.7m	0h 34.8m	-8° 24.0'						
					pB,L,E,bet 2 cB st - H II 3								

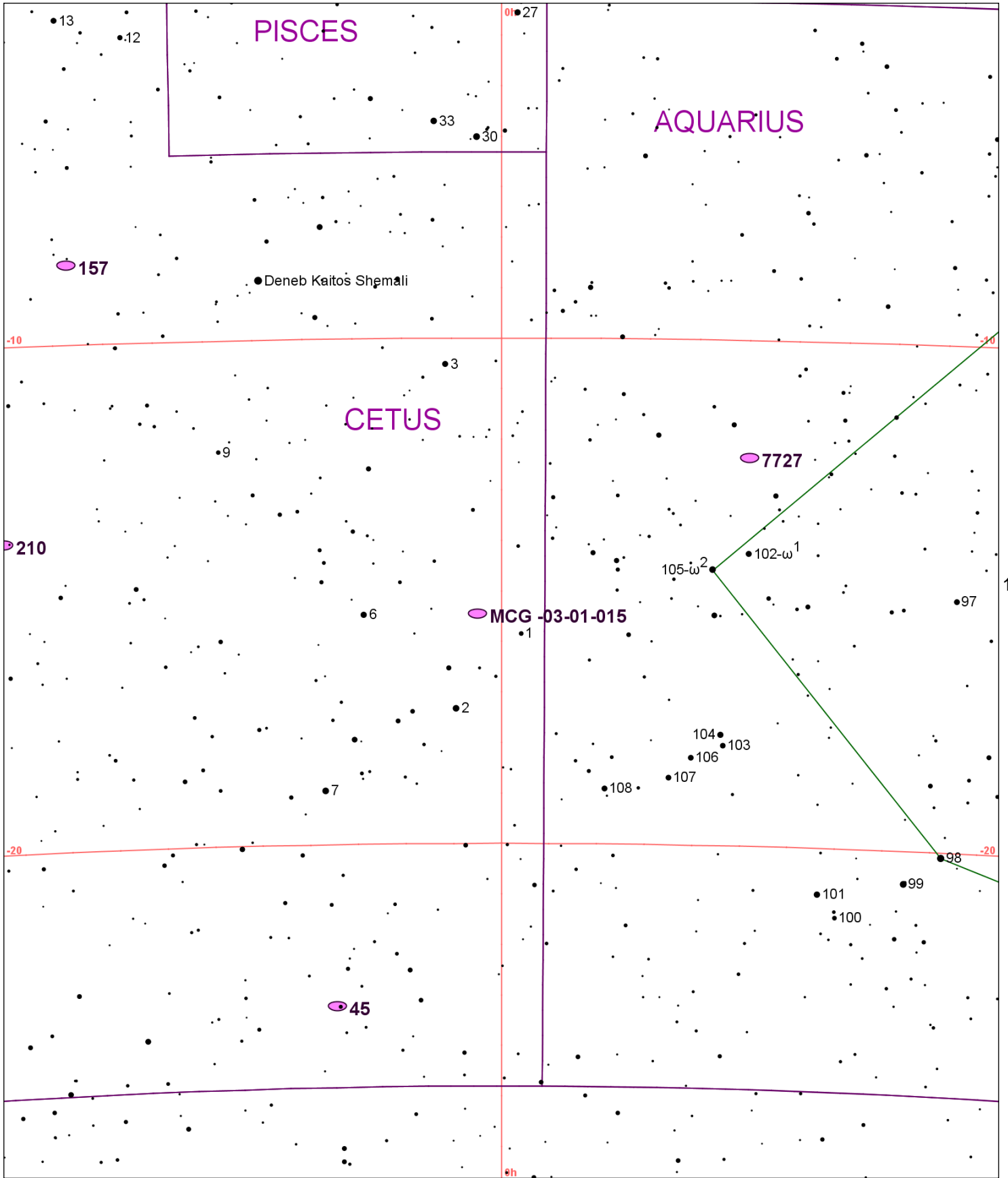


Chart 159													
Name	M	Const.	Mag.	Type	Size	R.A.	Decl.	C	R	S	O	# Stars	B
Common					Notes								
MCG -03-01-015		CET	10.6	GAL	11m x 4m	0h 02.0m	-15° 27.0'						
Appr. 50/50 Face & Edge On; Local Group; Low Surf Br													
NGC 45		CET	10.6	GAL	7.6m x 5.4m	0h 14.1m	-23° 11.0'						
eF,L,vglbM,L*cont f - Loose struct;Spiral pattern dim													
NGC 157		CET	10.4	GAL	4.1m x 2.7m	0h 34.8m	-8° 24.0'						
pB,L,E,bet 2 cB st - H II 3													
NGC 210		CET	10.9	GAL	4.6m x 3.2m	0h 40.6m	-13° 52.0'						
B,pS,R,psbM,r,* 11 p 2' - H II 452;F outer arms form encircling ring													
NGC 7727		AQR	10.6	GAL	4.7m x 4.1m	23h 39.9m	-12° 18.0'						
pB,pL,iR,mbM - H I 111;Faint outer arms ext to 5'													

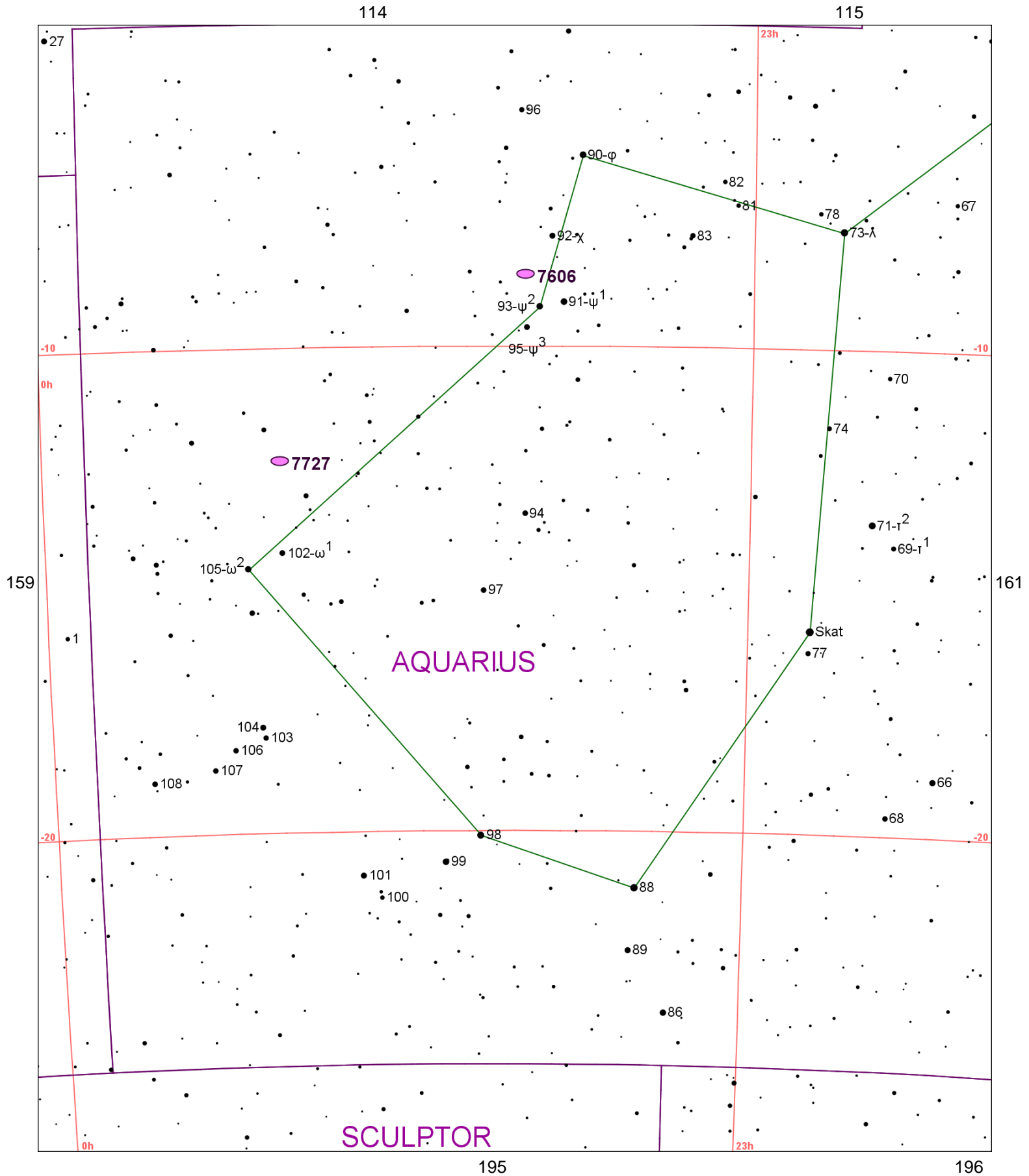


Chart 160

Name	M	Const.	Mag.	Type	Size	R.A.	Decl.	C	R	S	O	# Stars	B
Common					Notes								
NGC 7606		AQR	10.8	GAL	4.2m x 2.3m	23h 19.1m	-8° 29.0'						
					pF,cL,pmE0 - H I 104								
NGC 7727		AQR	10.6	GAL	4.7m x 4.1m	23h 39.9m	-12° 18.0'						
					pB,pL,iR,mbM - H I 111;Faint outer arms ext to 5'								