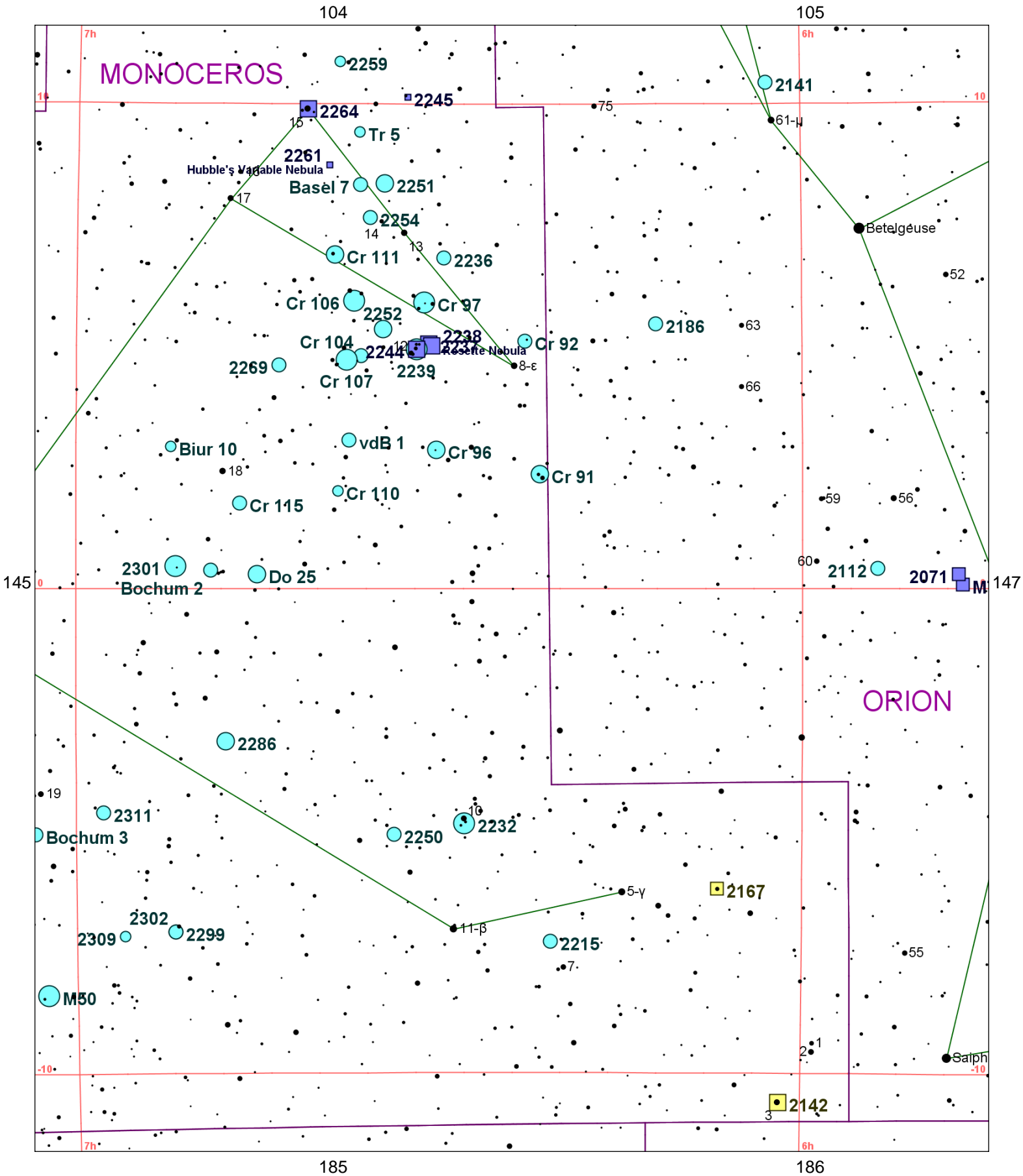


Chart 145													
Name	M	Const.	Mag.	Type	Size	R.A.	Decl.	C	R	S	O	# Stars	B
Common					Notes								
Basel 7		MON	8.5	OC		6h 36.6m	8° 21.0'					15	
Biur 10		MON	10.4	OC	4.0m	6h 52.2m	2° 56.0'					20	
Bochum 2		MON	9.7	OC		6h 48.9m	0° 23.0'					10	
Bochum 3		MON	9.9	OC		7h 03.4m	-5° 04.0'					25	
Cr 91		MON	6.4	OC	17.0m	6h 21.7m	2° 22.0'					20	
Cr 92		MON	8.5	OC	11.0m	6h 22.9m	5° 07.0'						
Cr 96		MON	7.3	OC	8.0m	6h 30.3m	2° 52.0'					15	
Cr 97		MON	5.4	OC	21.0m	6h 31.3m	5° 55.0'					15	
Cr 104		MON	9.6	OC	22.0m	6h 36.5m	4° 49.0'					15	
Cr 106		MON	4.6	OC	45.0m	6h 37.1m	5° 57.0'					20	
Cr 107		MON	5.1	OC	35.0m	6h 37.7m	4° 44.0'					15	
Cr 110		MON	10.5	OC	12.0m	6h 38.4m	2° 01.0'					70	
Cr 111		MON	7.0	OC	3.2m	6h 38.7m	6° 54.0'						
Cr 115		MON	9.1	OC	7.0m	6h 46.5m	1° 46.0'					50	
Cr 465		MON	10.1	OC	9.0m	7h 07.2m	-10° 37.0'						
Do 25		MON	7.6	OC	24.0m	6h 45.1m	0° 18.0'					50	
NGC 2215		MON	8.4	OC	11.0m	6h 20.8m	-7° 17.0'					40	
					Cl,cL,pRi,pC,st11:15 - H VII 20								
NGC 2232		MON	3.9	OC	30m	6h 28.0m	-4° 51.0'				O	20	B
					B* (10 MON) + Cl - H VIII 25								
NGC 2236		MON	8.5	OC	7.0m	6h 29.7m	6° 50.0'					50	
					Cl,pRi,pC,*10,12...15 - H VII 5								
NGC 2237		MON	5.5	DN	80m x 60m	6h 30.9m	5° 03.0'	C49	R32		O		
					pB,vvL,dif,part of eL nebs ring ar 2239 - Rosette nebula								
NGC 2238		MON	6.0	DN	80m x 60m	6h 30.7m	5° 01.0'						
Rosette Nebula					F* in neby,part of eL nebs ring ar 2239								
NGC 2239		MON	4.8	OC	24m	6h 31.9m	4° 57.0'					40	
					*8 in L,P,B Cl								
NGC 2244		MON	4.8	DN	24.0m	6h 31.9m	4° 57.0'	C50		S68	O	100	B
					Cl,beautiful,st sc (12 MON) - H VII 2;In Rosette nebula								
NGC 2245		MON		DN	2m x 2m	6h 32.7m	10° 09.0'				O		
					pL,com,mbN sf alm *,*7-8 nf - H IV 3								
NGC 2250		MON	8.9	OC	8.0m	6h 33.8m	-5° 05.0'					10	
					Cl,pRi,iC,iF,*8,12...14								
NGC 2251		MON	7.3	OC	10.0m	6h 34.6m	8° 22.0'				O	30	B
					Cl,vL,E,Ri,iC - H VIII 3								
NGC 2252		MON	7.7	OC	20.0m	6h 34.7m	5° 22.0'					30	
					Cl,vL,pRi,iC,st S - H VIII 50								
NGC 2254		MON	9.1	OC	4.0m	6h 35.8m	7° 40.0'					50	
					Cl,S,pC,iF,*11...13 - H VII 22								
NGC 2259		MON	10.8	OC	4.5m	6h 38.4m	10° 53.0'					25	
					Cl,cRi,eC,iF,st eS - H VI 28								
NGC 2261		MON		DN	2m x 1m	6h 39.2m	8° 45.0'	C46	R33	S69	O		
Hubble's Variable Nebula					B,vmE 330 deg,N com=*11 - H IV 2; fan-shaped; R Mon invl								
NGC 2264		MON	3.9	DN	20.0m	6h 41.0m	9° 54.0'				O	40	B
					eL neb,3 deg diam,densest 12' sp 15 MON - H V 27=H VIII 5; 20 * mags 6...10 w neby; Near Cone nebula								
NGC 2269		MON	10.0	OC	4.0m	6h 43.3m	4° 37.0'					12	
					Cl,vmC,not Ri,st vS - H VI 3								
NGC 2286		MON	7.5	OC	15.0m	6h 47.7m	-3° 09.0'				O	50	
					Cl,L,C,ab 100* 9...15 - H VIII 31								
NGC 2299		MON	8.9	OC	2.5m	6h 51.9m	-7° 05.0'						
					Cl of 30 or 40 *								
NGC 2301		MON	6.0	OC	12.0m	6h 51.8m	0° 28.0'				O	80	B
					Cl,Ri,L,iF,st L & S - H VI 27;60* 8...;blue&gold D* near center								
NGC 2302		MON	8.9	OC	2.5m	6h 51.9m	-7° 05.0'					30	
					Cl,L,P,iC - H VIII 39								

Chart 145

Name	M	Const.	Mag.	Type	Size	R.A.	Decl.	C	R	S	O	# Stars	B
Common					Notes								
NGC 2309		MON	10.5	OC	3.0m	6h 56.1m	-7° 10.0'					40	
					Cl,pL,pRi,mC,st13 - H VI 18								
NGC 2311		MON	9.6	OC	7.0m	6h 57.8m	-4° 37.0'					50	
					Cl,IC,not Ri - H VIII 60								
NGC 2323	M50	MON	5.9	OC	16m	7h 02.5m	-8° 23.0'				O	80	B
					Cl,vL,Ri,pC - About 100 stars mags 9...14								
NGC 2324		MON	8.4	OC	8.0m	7h 04.1m	1° 03.0'				O	70	
					Cl,L,Ri,cC,st 12...16 - H VII 38								
NGC 2335		MON	7.2	OC	12.0m	7h 06.8m	-10° 02.0'					35	
					Cl,L,IC - H VIII 32;In CMa OB1								
NGC 2343		MON	6.7	OC	7.0m	7h 08.1m	-10° 37.0'					20	B
					Cl,cL,P,IC - H VIII 33								
NGC 2346		MON	12.5	PN	60s x 50s	7h 09.4m	-0° 48.0'				O		
					*10 att w S,vF,neb - H IV 65;PK215+3.1								
NGC 2353		MON	7.1	OC	20.0m	7h 14.5m	-10° 16.0'				O	30	
					Cl,L,IC,one vB* - H VIII 34;In CMa OB1								
Tr 5		MON	10.9	OC	8.0m	6h 36.7m	9° 26.0'					150	
					One member is variable V 493 Mon--a red carbon star								
vdB 1		MON	9.5	OC	5.0m	6h 37.5m	3° 04.0'					39	



MONOCEROS

ORION

Hubble's Variable Nebula

Rosette Nebula

Bochum 2

Bochum 3

Saiph

Chart 146

Name	M	Const.	Mag.	Type	Size	R.A.	Decl.	C	R	S	O	# Stars	B
Common					Notes								
Basel 7		MON	8.5	OC		6h 36.6m	8° 21.0'					15	
Biur 10		MON	10.4	OC	4.0m	6h 52.2m	2° 56.0'					20	
Bochum 2		MON	9.7	OC		6h 48.9m	0° 23.0'					10	
Bochum 3		MON	9.9	OC		7h 03.4m	-5° 04.0'					25	
Cr 91		MON	6.4	OC	17.0m	6h 21.7m	2° 22.0'					20	
Cr 92		MON	8.5	OC	11.0m	6h 22.9m	5° 07.0'						
Cr 96		MON	7.3	OC	8.0m	6h 30.3m	2° 52.0'					15	
Cr 97		MON	5.4	OC	21.0m	6h 31.3m	5° 55.0'					15	
Cr 104		MON	9.6	OC	22.0m	6h 36.5m	4° 49.0'					15	
Cr 106		MON	4.6	OC	45.0m	6h 37.1m	5° 57.0'					20	
Cr 107		MON	5.1	OC	35.0m	6h 37.7m	4° 44.0'					15	
Cr 110		MON	10.5	OC	12.0m	6h 38.4m	2° 01.0'					70	
Cr 111		MON	7.0	OC	3.2m	6h 38.7m	6° 54.0'						
Cr 115		MON	9.1	OC	7.0m	6h 46.5m	1° 46.0'					50	
Do 25		MON	7.6	OC	24.0m	6h 45.1m	0° 18.0'					50	
NGC 2068	M78	ORI	8.0	DN	8m x 6m	5h 46.8m	0° 05.0'				O		B
					B,L,wisp,gmbN,3* inv,r - Comet shaped;2 10mag * invl, 53" sep								
NGC 2071		ORI	8.0	DN	7m x 5m	5h 47.1m	0° 18.0'						
					D*(10 & 14m) w vF,L chev - H IV 36								
NGC 2112		ORI	9.1	OC	11.0m	5h 53.8m	0° 25.0'					50	
					Cl,pL,iRi,pC,st S - H VII 24								
NGC 2141		ORI	9.4	OC	10.0m	6h 02.9m	10° 27.0'					10	
					F,pS,dif								
NGC 2142		MON	5.0	MISC		6h 01.8m	-10° 36.0'						
					* (3 MON) inv in pL,F,neb								
NGC 2167		MON	6.6	MISC		6h 07.0m	-6° 12.0'						
					nebulous *7,am 3* - H IV 44								
NGC 2186		ORI	8.7	OC	4.0m	6h 12.1m	5° 28.0'					30	
					Cl,pL,pRi,pC,st L and S - H VII 25								
NGC 2215		MON	8.4	OC	11.0m	6h 20.8m	-7° 17.0'					40	
					Cl,cL,pRi,pC,st11.15 - H VII 20								
NGC 2232		MON	3.9	OC	30m	6h 28.0m	-4° 51.0'				O	20	B
					B* (10 MON) + Cl - H VIII 25								
NGC 2236		MON	8.5	OC	7.0m	6h 29.7m	6° 50.0'					50	
					Cl,pRi,pC,*10,12...15 - H VII 5								
NGC 2237		MON	5.5	DN	80m x 60m	6h 30.9m	5° 03.0'	C49	R32		O		
					pB,vvL,dif,part of eL nebs ring ar 2239 - Rosette nebula								
NGC 2238		MON	6.0	DN	80m x 60m	6h 30.7m	5° 01.0'						
Rosette Nebula					F* in neby,part of eL nebs ring ar 2239								
NGC 2239		MON	4.8	OC	24m	6h 31.9m	4° 57.0'					40	
					*8 in L,P,B Cl								
NGC 2244		MON	4.8	DN	24.0m	6h 31.9m	4° 57.0'	C50		S68	O	100	B
					Cl,beautiful,st sc (12 MON) - H VII 2;In Rosette nebula								
NGC 2245		MON		DN	2m x 2m	6h 32.7m	10° 09.0'				O		
					pL,com,mbN sf alm *,*7-8 nf - H IV 3								
NGC 2250		MON	8.9	OC	8.0m	6h 33.8m	-5° 05.0'					10	
					Cl,pRi,iC,iF,*8,12...14								
NGC 2251		MON	7.3	OC	10.0m	6h 34.6m	8° 22.0'				O	30	B
					Cl,vL,E,Ri,iC - H VIII 3								
NGC 2252		MON	7.7	OC	20.0m	6h 34.7m	5° 22.0'					30	
					Cl,vL,pRi,iC,st S - H VIII 50								
NGC 2254		MON	9.1	OC	4.0m	6h 35.8m	7° 40.0'					50	
					Cl,S,pC,iF,*11...13 - H VII 22								
NGC 2259		MON	10.8	OC	4.5m	6h 38.4m	10° 53.0'					25	
					Cl,cRi,eC,iF,st eS - H VI 28								
NGC 2261		MON		DN	2m x 1m	6h 39.2m	8° 45.0'	C46	R33	S69	O		
Hubble's Variable Nebula					B,vmE 330 deg,N com=*11 - H IV 2; fan-shaped; R Mon invl								

Chart 146													
Name	M	Const.	Mag.	Type	Size	R.A.	Decl.	C	R	S	O	# Stars	B
Common					Notes								
NGC 2264		MON	3.9	DN	20.0m	6h 41.0m	9° 54.0'				O	40	B
					eL neb,3 deg diam,densest 12' sp 15 MON - H V 27=H VIII 5; 20 * mags 6...10 w neby; Near Cone nebula								
NGC 2269		MON	10.0	OC	4.0m	6h 43.3m	4° 37.0'					12	
					Cl,vmC,not Ri,st vS - H VI 3								
NGC 2286		MON	7.5	OC	15.0m	6h 47.7m	-3° 09.0'				O	50	
					Cl,L,C,ab 100* 9...15 - H VIII 31								
NGC 2299		MON	8.9	OC	2.5m	6h 51.9m	-7° 05.0'						
					Cl of 30 or 40 *								
NGC 2301		MON	6.0	OC	12.0m	6h 51.8m	0° 28.0'				O	80	B
					Cl,Ri,L,iF,st L & S - H VI 27;60* 8...;blue&gold D* near center								
NGC 2302		MON	8.9	OC	2.5m	6h 51.9m	-7° 05.0'					30	
					Cl,L,P,IC - H VIII 39								
NGC 2309		MON	10.5	OC	3.0m	6h 56.1m	-7° 10.0'					40	
					Cl,pL,pRi,mC,st13 - H VI 18								
NGC 2311		MON	9.6	OC	7.0m	6h 57.8m	-4° 37.0'					50	
					Cl,IC,not Ri - H VIII 60								
NGC 2323	M50	MON	5.9	OC	16m	7h 02.5m	-8° 23.0'				O	80	B
					Cl,vL,Ri,pC - About 100 stars mags 9...14								
Tr 5		MON	10.9	OC	8.0m	6h 36.7m	9° 26.0'					150	
					One member is variable V 493 Mon--a red carbon star								
vdB 1		MON	9.5	OC	5.0m	6h 37.5m	3° 04.0'					39	

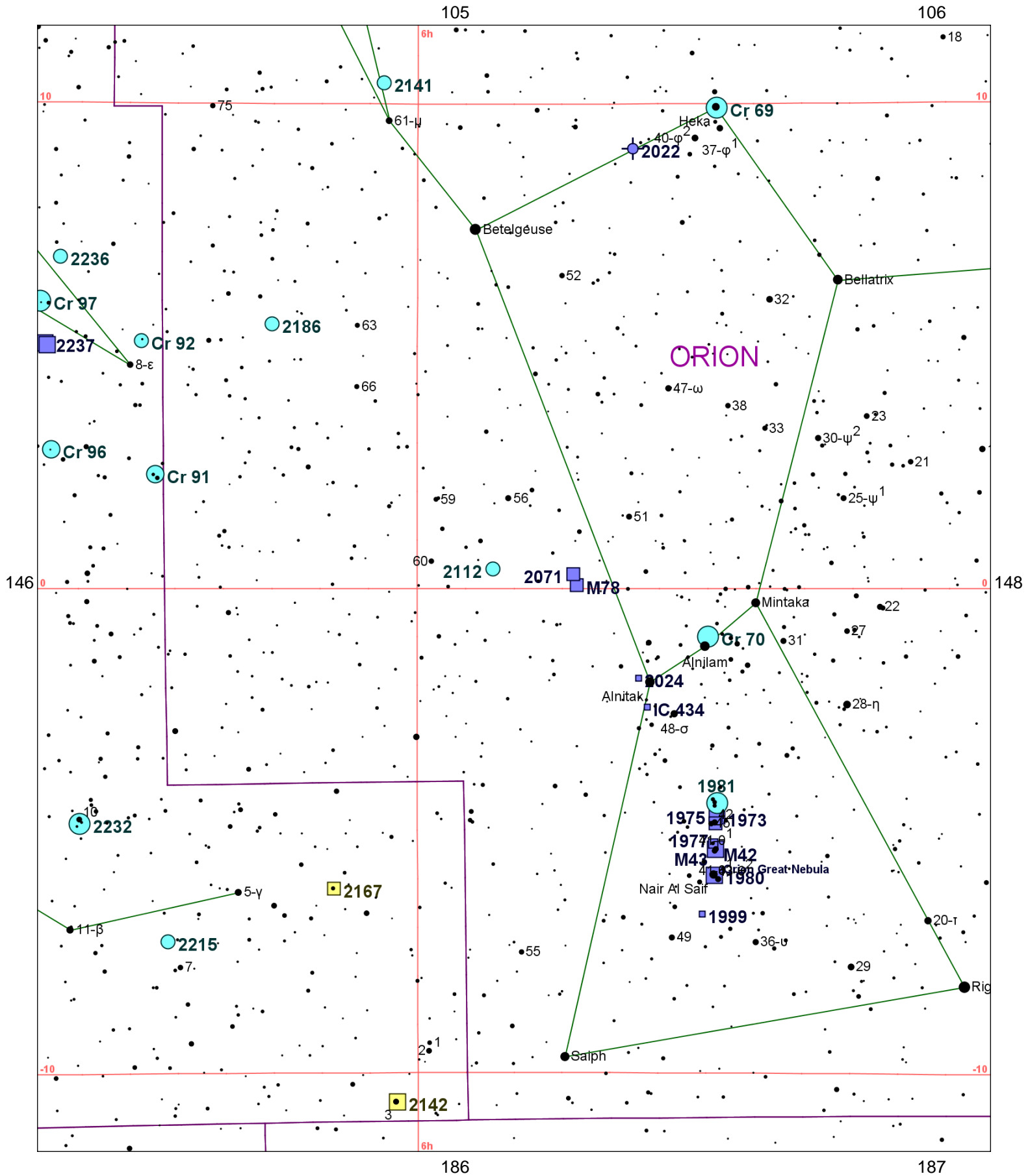


Chart 147													
Name	M	Const.	Mag.	Type	Size	R.A.	Decl.	C	R	S	O	# Stars	B
Common					Notes								
Cr 69		ORI	2.8	OC	65m	5h 35.1m	9° 56.0'					20	
					Lambda Ori cluster								
Cr 70		ORI	0.4	OC	150m	5h 36.0m	-1° 00.0'					100	
					Orion's belt stars								
Cr 91		MON	6.4	OC	17.0m	6h 21.7m	2° 22.0'					20	
Cr 92		MON	8.5	OC	11.0m	6h 22.9m	5° 07.0'						
Cr 96		MON	7.3	OC	8.0m	6h 30.3m	2° 52.0'					15	
Cr 97		MON	5.4	OC	21.0m	6h 31.3m	5° 55.0'					15	
IC 434		ORI	11.0	DN	90m x 30m	5h 41.0m	-2° 27.0'						
					eF,vvL,vmE;1 deg long incl Zeta Ori - Contains Horsehead neb (B33)								
NGC 1973		ORI	7.0	DN	5m x 5m	5h 35.1m	-4° 44.0'		R26	S74	O		
					*8,9 inv in neb								
NGC 1975		ORI	7.0	DN	10m x 5m	5h 35.3m	-4° 41.0'						
					B** inv in neb								
NGC 1976	M42	ORI	4.0	DN	90m x 60m	5h 35.3m	-5° 23.0'				O		B
					Orion Great Nebula								
NGC 1977		ORI	7.0	DN	20m x 10m	5h 35.3m	-4° 51.0'						
					42 Orionis neb - H V 30								
NGC 1980		ORI	2.5	DN	14m x 14m	5h 35.4m	-5° 55.0'						
					vF,vvL,44 Ori invl - H V 31								
NGC 1981		ORI	4.2	OC	25.0m	5h 35.2m	-4° 26.0'				O	20	B
					Cl,vB,IrI,st L,sc - In Ori OB1;incl D* Struve 750								
NGC 1982	M43	ORI	9.0	DN	20m x 15m	5h 35.5m	-5° 16.0'				O		B
					!;vB,vL,R w tail,mbM*8 - H III 1 ?;detached part of Orion Nebula								
NGC 1999		ORI		DN	2m x 2m	5h 36.4m	-6° 43.0'				O		
					*10,11 inv in neb - H IV 33								
NGC 2022		ORI	12.8	PN	28s x 27s	5h 42.1m	9° 05.0'		R27	S76			
					pB,vS,vIE - H IV 34;small;faint and distinct w annular form;PK196-10.1								
NGC 2024		ORI		DN	30m x 30m	5h 41.7m	-1° 51.0'		R28	S75	O		
					! irr,B,vvL,black sp incl - H V 28;Tank Track Neb;bright but masked by glow of Zeta Ori								
NGC 2068	M78	ORI	8.0	DN	8m x 6m	5h 46.8m	0° 05.0'				O		B
					B,L,wisp,gmbN,3* inv,r - Comet shaped;2 10mag * invl, 53" sep								
NGC 2071		ORI	8.0	DN	7m x 5m	5h 47.1m	0° 18.0'						
					D*(10 & 14m) w vF,L chev - H IV 36								
NGC 2112		ORI	9.1	OC	11.0m	5h 53.8m	0° 25.0'					50	
					Cl,pL,IrI,pC,st S - H VII 24								
NGC 2141		ORI	9.4	OC	10.0m	6h 02.9m	10° 27.0'					10	
					F,pS,dif								
NGC 2142		MON	5.0	MISC		6h 01.8m	-10° 36.0'						
					* (3 MON) inv in pL,F,neb								
NGC 2167		MON	6.6	MISC		6h 07.0m	-6° 12.0'						
					nebulous *7,am 3* - H IV 44								
NGC 2186		ORI	8.7	OC	4.0m	6h 12.1m	5° 28.0'					30	
					Cl,pL,pRi,pC,st L and S - H VII 25								
NGC 2215		MON	8.4	OC	11.0m	6h 20.8m	-7° 17.0'					40	
					Cl,cL,pRi,pC,st11.15 - H VII 20								
NGC 2232		MON	3.9	OC	30m	6h 28.0m	-4° 51.0'				O	20	B
					B* (10 MON) + Cl - H VIII 25								
NGC 2236		MON	8.5	OC	7.0m	6h 29.7m	6° 50.0'					50	
					Cl,pRi,pC,*10,12...15 - H VII 5								
NGC 2237		MON	5.5	DN	80m x 60m	6h 30.9m	5° 03.0'	C49	R32		O		
					pB,vvL,dif,part of eL nebs ring ar 2239 - Rosette nebula								
NGC 2238		MON	6.0	DN	80m x 60m	6h 30.7m	5° 01.0'						
Rosette Nebula					F* in neby,part of eL nebs ring ar 2239								

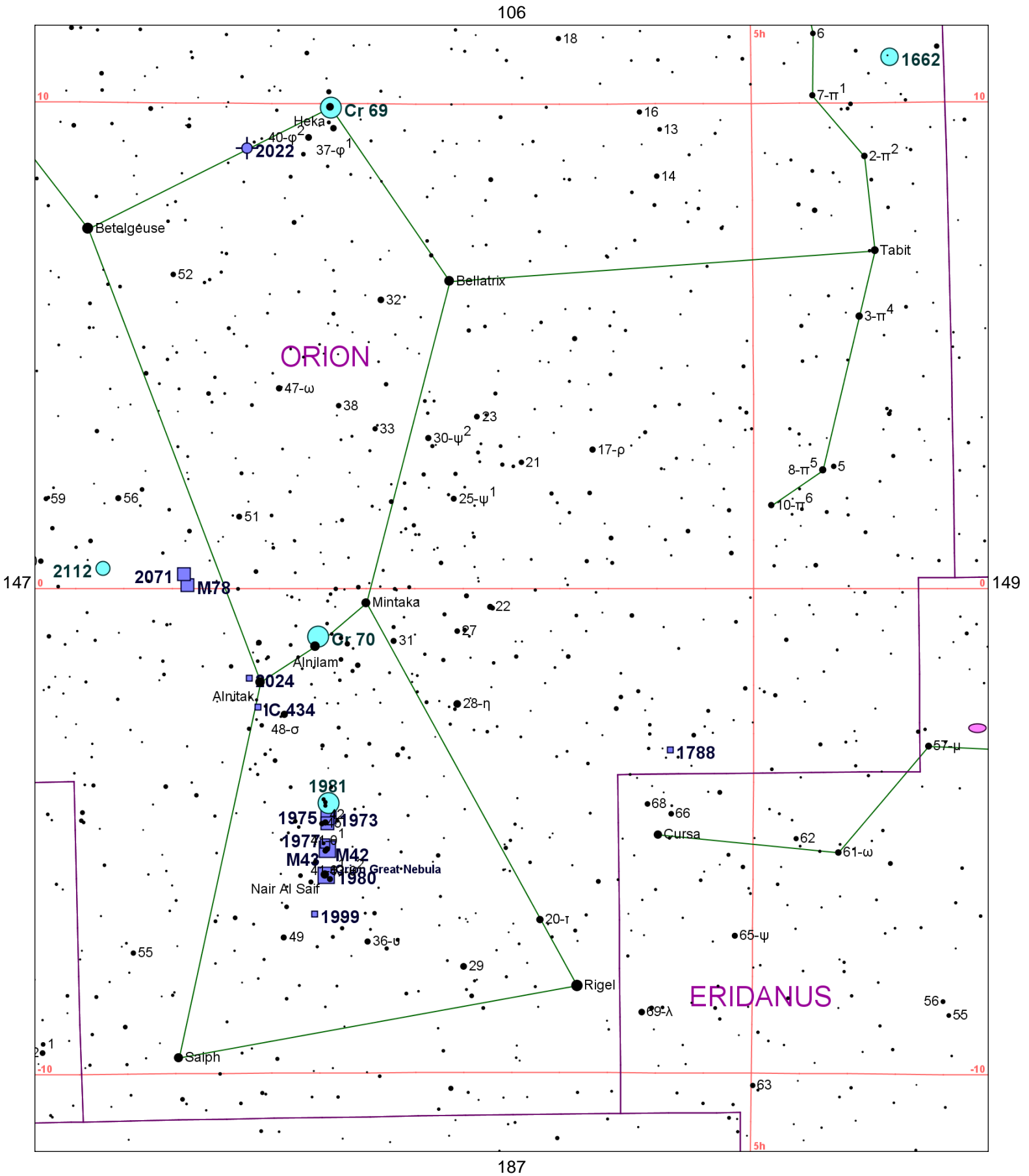


Chart 148													
Name	M	Const.	Mag.	Type	Size	R.A.	Decl.	C	R	S	O	# Stars	B
Common					Notes								
Cr 69		ORI	2.8	OC	65m	5h 35.1m	9° 56.0'					20	
					Lambda Ori cluster								
Cr 70		ORI	0.4	OC	150m	5h 36.0m	-1° 00.0'					100	
					Orion's belt stars								
IC 434		ORI	11.0	DN	90m x 30m	5h 41.0m	-2° 27.0'						
					eF,vvL,vmE;1 deg long incl Zeta Ori - Contains Horsehead neb (B33)								
NGC 1637		ERI	10.8	GAL	3.9m x 3.3m	4h 41.5m	-2° 52.0'						
					cB,L,R,vgbM - H I 122;Strong asymm vF but rrr outer arms								
NGC 1662		ORI	6.4	OC	20.0m	4h 48.4m	10° 57.0'					35	B
					Cl OF L&S sc st - H VII 1								
NGC 1788		ORI		DN	2m x 2m	5h 06.9m	-3° 20.0'		R25	S73	O		
					B,c,L,R,bM,***;* 10 inv in the neby - H V 32								
NGC 1973		ORI	7.0	DN	5m x 5m	5h 35.1m	-4° 44.0'		R26	S74	O		
					*8,9 inv in neb								
NGC 1975		ORI	7.0	DN	10m x 5m	5h 35.3m	-4° 41.0'						
					B** inv in neb								
NGC 1976	M42	ORI	4.0	DN	90m x 60m	5h 35.3m	-5° 23.0'				O		B
					Orion Great Nebula								
NGC 1977		ORI	7.0	DN	20m x 10m	5h 35.3m	-4° 51.0'						
					42 Orionis neb - H V 30								
NGC 1980		ORI	2.5	DN	14m x 14m	5h 35.4m	-5° 55.0'						
					vF,vvL,44 Ori invl - H V 31								
NGC 1981		ORI	4.2	OC	25.0m	5h 35.2m	-4° 26.0'				O	20	B
					Cl,vB,IRi,st L,sc - In Ori OB1;incl D* Struve 750								
NGC 1982	M43	ORI	9.0	DN	20m x 15m	5h 35.5m	-5° 16.0'				O		B
					!,vB,vL,R w tail,mbM*8 - H III 1 ?;detached part of Orion Nebula								
NGC 1999		ORI		DN	2m x 2m	5h 36.4m	-6° 43.0'				O		
					*10,11 inv in neb - H IV 33								
NGC 2022		ORI	12.8	PN	28s x 27s	5h 42.1m	9° 05.0'		R27	S76			
					pB,vS,vIE - H IV 34;small;faint and distinct w annular form;PK196-10.1								
NGC 2024		ORI		DN	30m x 30m	5h 41.7m	-1° 51.0'		R28	S75	O		
					! irr,B,vvL,black sp incl - H V 28;Tank Track Neb;bright but masked by glow of Zeta Ori								
NGC 2068	M78	ORI	8.0	DN	8m x 6m	5h 46.8m	0° 05.0'				O		B
					B,L,wisp,gmbN,3* inv,r - Comet shaped;2 10mag * invl, 53" sep								
NGC 2071		ORI	8.0	DN	7m x 5m	5h 47.1m	0° 18.0'						
					D*(10 & 14m) w vF,L chev - H IV 36								
NGC 2112		ORI	9.1	OC	11.0m	5h 53.8m	0° 25.0'					50	
					Cl,pL,IRi,pC,st S - H VII 24								

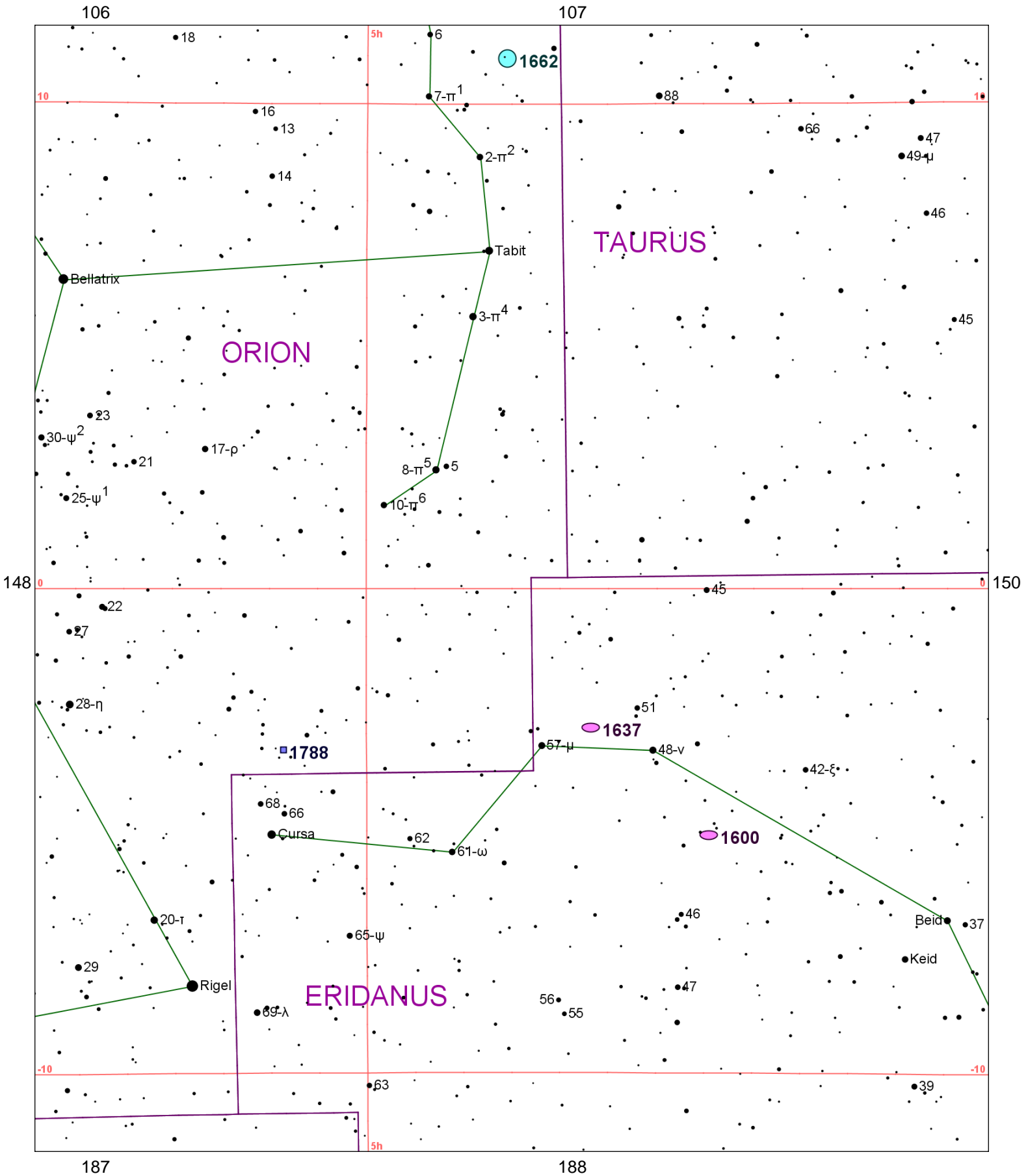


Chart 149

Name	M	Const.	Mag.	Type	Size	R.A.	Decl.	C	R	S	O	# Stars	B
Common					Notes								
NGC 1600		ERI	10.9	GAL	3.1m x 2.2m	4h 31.7m	-5° 05.0'						
pB,pL,R,gmbM - H I 158;RC1;brtst in grp;P w NGC 1601 at 1'6;NGC 1603 at 2'5													
NGC 1637		ERI	10.8	GAL	3.9m x 3.3m	4h 41.5m	-2° 52.0'						
cB,L,R,vgbM - H I 122;Strong asymm vF but rrr outer arms													
NGC 1662		ORI	6.4	OC	20.0m	4h 48.4m	10° 57.0'					35	B
Cl OF L&S sc st - H VII 1													
NGC 1788		ORI		DN	2m x 2m	5h 06.9m	-3° 20.0'		R25	S73	O		
B,cL,R,bM,***;* 10 inv in the neby - H V 32													

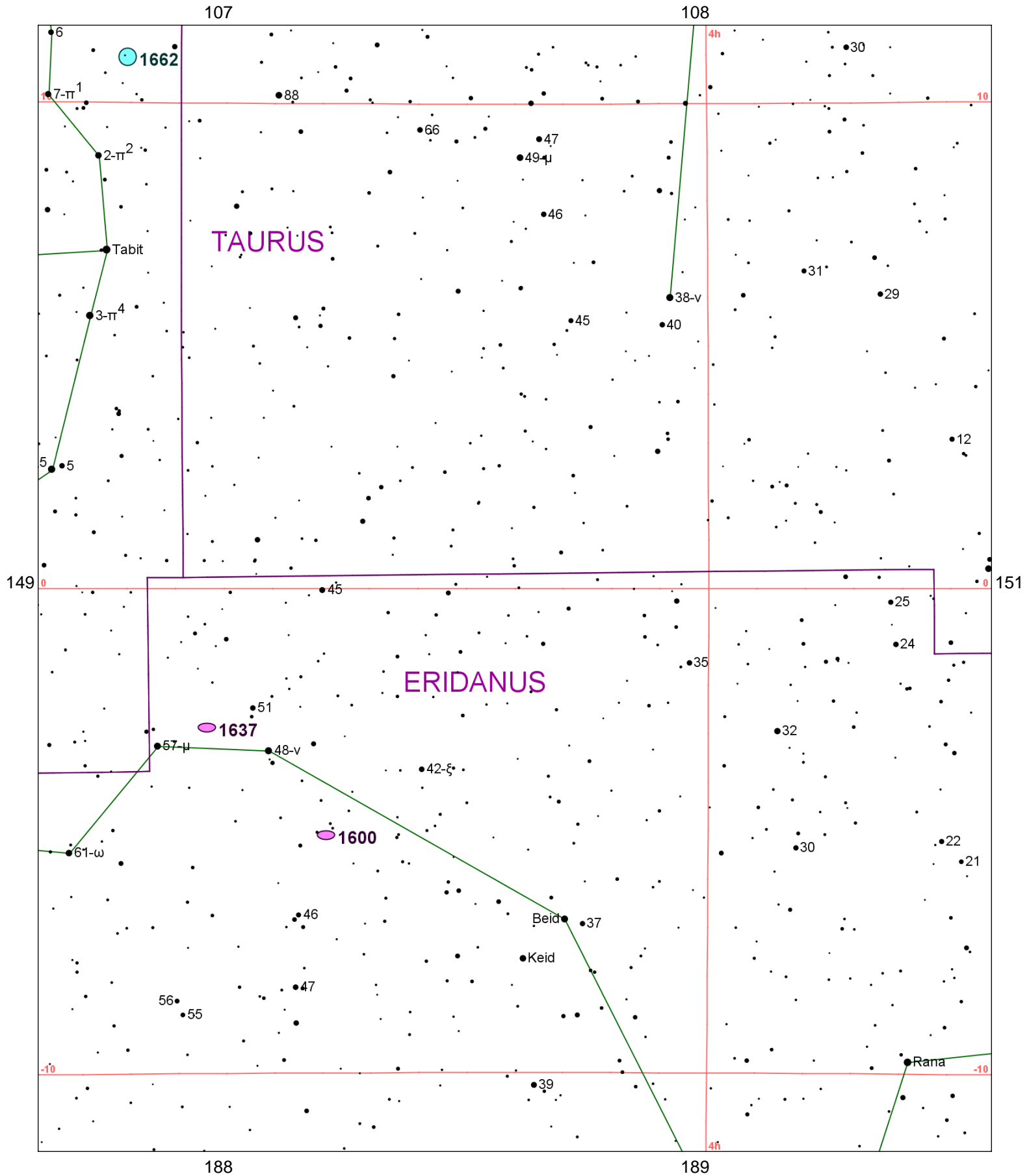
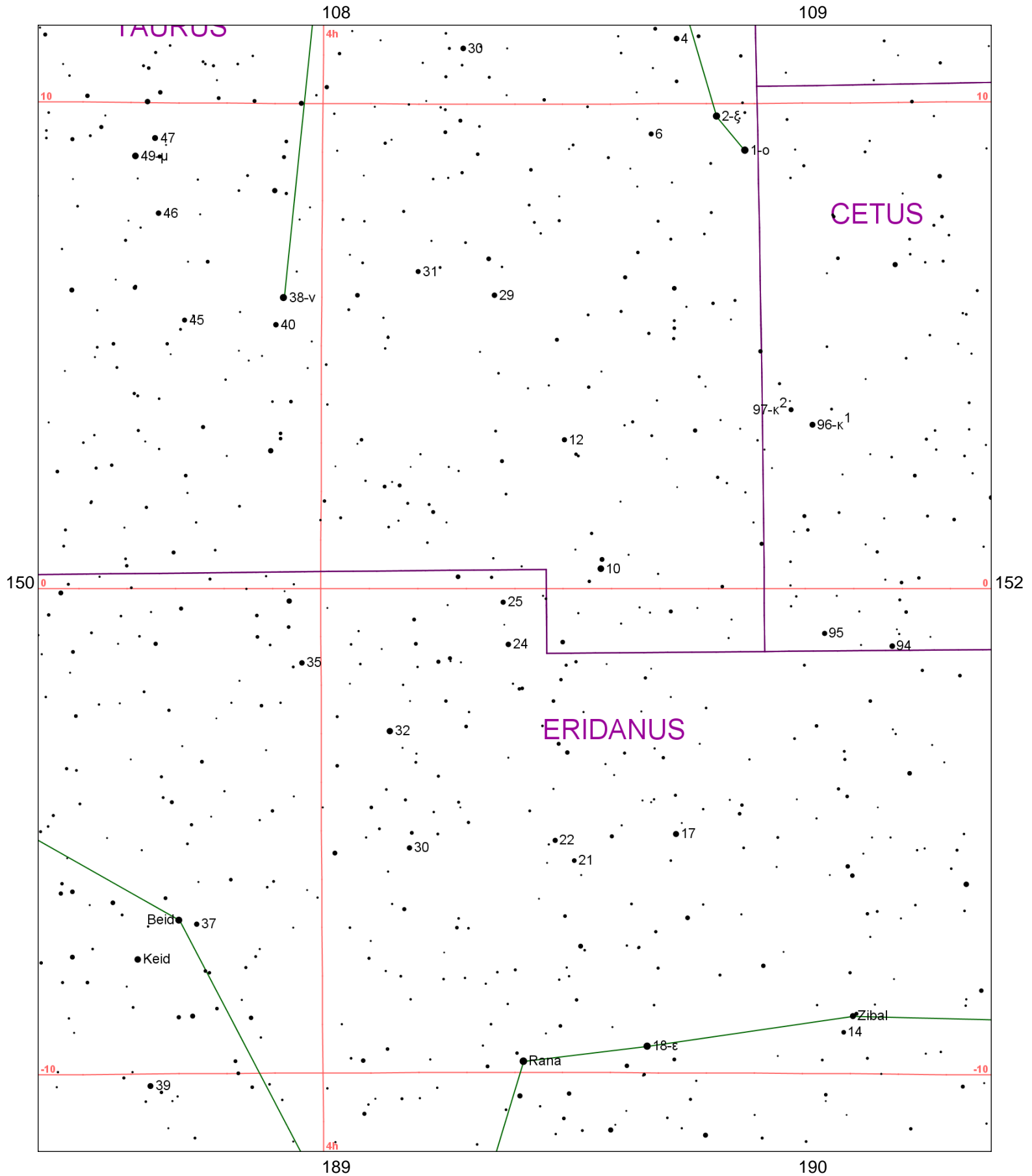
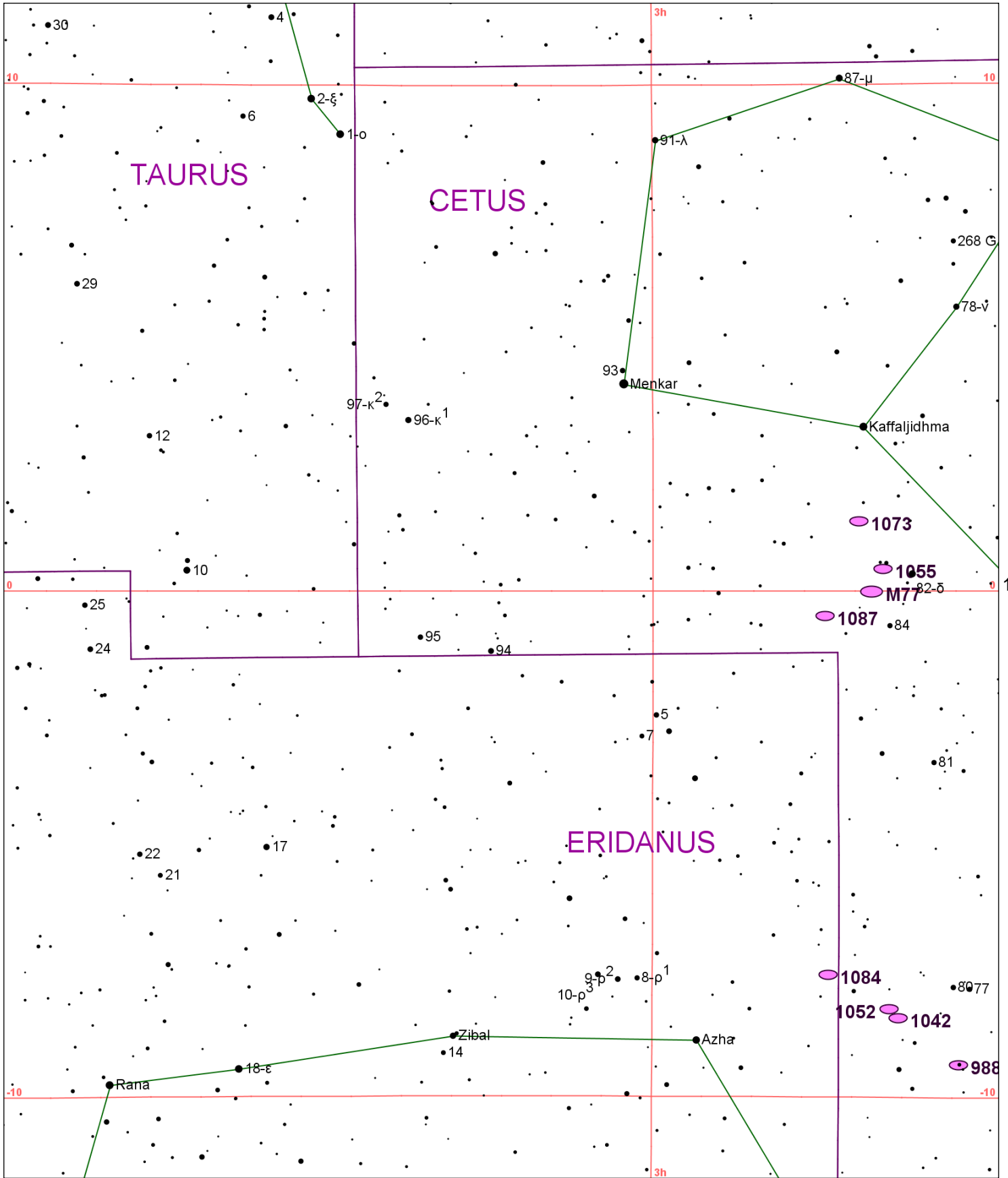


Chart 150													
Name	M	Const.	Mag.	Type	Size	R.A.	Decl.	C	R	S	O	# Stars	B
Common					Notes								
NGC 1600		ERI	10.9	GAL	3.1m x 2.2m	4h 31.7m	-5° 05.0'						
pB,pL,R,gmbM - H I 158;RC1;brtst in grp;P w NGC 1601 at 1'6;NGC 1603 at 2'5													
NGC 1637		ERI	10.8	GAL	3.9m x 3.3m	4h 41.5m	-2° 52.0'						
cB,L,R,vgbM - H I 122;Strong asymm vF but rrr outer arms													
NGC 1662		ORI	6.4	OC	20.0m	4h 48.4m	10° 57.0'					35	B
CI OF L&S sc st - H VII 1													



109

110



TAURUS

CETUS

ERIDANUS

151

153

190

191

Chart 152													
Name	M	Const.	Mag.	Type	Size	R.A.	Decl.	C	R	S	O	# Stars	B
Common					Notes								
NGC 988		CET	11.0	GAL	4.6m x 2.5m	2h 35.5m	-9° 21.0'						
					neb *7.5m								
NGC 1042		CET	11.0	GAL	4.9m x 4m	2h 40.4m	-8° 26.0'						
					F,L,R,np of 2 - Spiral arms well defined								
NGC 1052		CET	10.5	GAL	2.8m x 2m	2h 41.1m	-8° 15.0'				O		
					B,pL,R,mbM*12 - H I 63								
NGC 1055		CET	10.6	GAL	7.6m x 3m	2h 41.8m	0° 27.0'						
					pF,cL,IE80,bM,*11n1' - H I 1= II 6;Nearly edge-on spiral w equatorial dust lane								
NGC 1068	M77	CET	8.9	GAL	7.3m x 6.3m	2h 42.7m	-0° 01.0'				O		B
					vB,pL,iR,sbMrrN - Seyfert;brtst in NGC 1068 grp								
NGC 1073		CET	11.0	GAL	4.9m x 4.3m	2h 43.7m	1° 23.0'						
					vF,L,lbM,er - H III 455;NGC 1068 group								
NGC 1084		ERI	10.7	GAL	3.5m x 2.1m	2h 46.0m	-7° 35.0'				O		
					vB,pL,E,gpmbM - H I 64								
NGC 1087		CET	10.9	GAL	3.9m x 2.3m	2h 46.4m	-0° 30.0'						
					pB,cL,IE,mbM - H II 466;In NGC1068 grp;P w NGC1090 @15' and NGC1094 @ 20'								