

Chart 129													
Name	M	Const.	Mag.	Type	Size	R.A.	Decl.	C	R	S	O	# Stars	B
<b>Common</b>					<b>Notes</b>								
NGC 5813		VIR	10.5	GAL	4m x 2.8m	15h 01.2m	1° 42.0'				O		
					B,pS,R,psmbM - H I 127;In NGC 5846 group;P w NGC 5814 at 5';NGC 8506 at 21'								
NGC 5838		VIR	10.9	GAL	3.7m x 1.6m	15h 05.4m	2° 06.0'				O		
					pB,pS - H II 542;In NGC 5846 grp;P w NGC 5848 at 18'								
NGC 5846		VIR	10.0	GAL	4m x 3.7m	15h 06.5m	1° 36.0'				O		
					vB,pL,R,psbMN,F* inv S,n of 2 - H I 128;Brightest in group;P w NGC 5846A at 1';NGC 5850 10'ESE								
NGC 5850		VIR	10.8	GAL	4.5m x 3.9m	15h 07.1m	1° 33.0'						
					cF,S,IE,psbM - H II 543;In NGC 5846 group;vBN w bar								
NGC 5904	M5	SER	5.8	GC	19.9m	15h 18.6m	2° 05.0'				O		B
					!!;vB,L,eCM,eRi - st mags 11...;superb cluster								
NGC 5921		SER	10.8	GAL	4.8m x 4m	15h 21.9m	5° 04.0'						
					cB,cL,iR,vsbM*12,am * - H I 148;eBN in B bar								

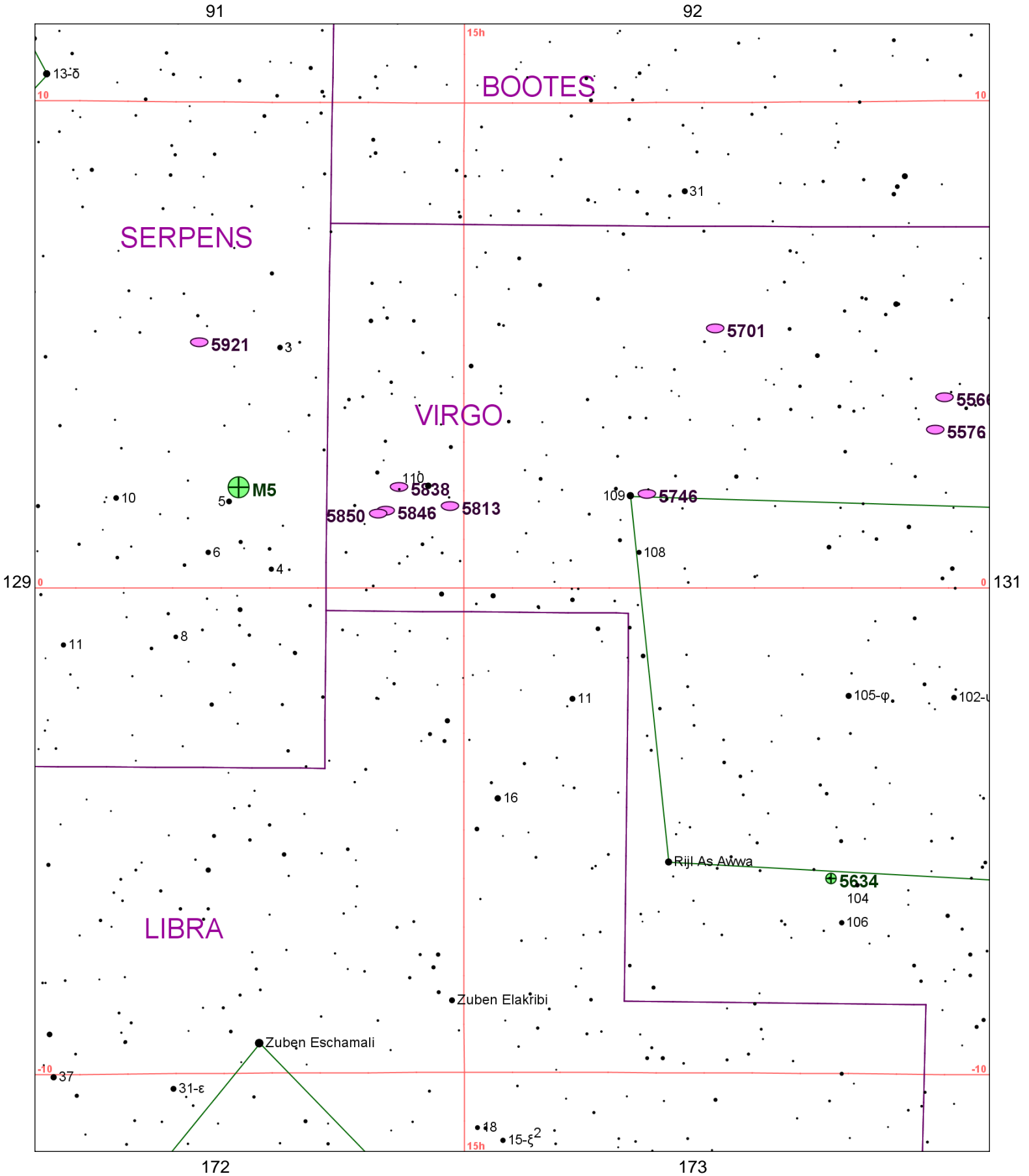


Chart 130													
Name	M	Const.	Mag.	Type	Size	R.A.	Decl.	C	R	S	O	# Stars	B
<b>Common</b>					<b>Notes</b>								
NGC 5566		VIR	10.6	GAL	6.6m x 2.3m	14h 20.3m	3° 56.0'						
					B,p,L,R,psbM,r,*f1.5' - H I 144;double galaxy								
NGC 5576		VIR	11.0	GAL	3m x 2.3m	14h 21.1m	3° 16.0'						
					B,S,R,vsmbM,brightest of 3 - H I 146;triple group w NGC 5574 at 2.9' and NGC 5577 at 10.3'								
NGC 5634		VIR	11.0	GC	4.9m	14h 29.6m	-5° 59.0'				O		
					vB,cL,R,gbM,rrr,st 19...,*8 sf - H I 70;11 mag star on E edge								
NGC 5701		VIR	10.9	GAL	4.7m x 4.6m	14h 39.2m	5° 22.0'				O		
					cB,pS,R,mbM,*11p15" - H II 575;Several vF;vS comps in field								
NGC 5746		VIR	10.3	GAL	6.9m x 1.2m	14h 44.9m	1° 57.0'		R85	S110	O		
					B,L,vmE170,bM,BN - H I 126;vsBN in B cent.bulge;NGC 5740 at 18';edge on								
NGC 5813		VIR	10.5	GAL	4m x 2.8m	15h 01.2m	1° 42.0'				O		
					B,pS,R,psmbM - H I 127;In NGC 5846 group;P w NGC 5814 at 5';NGC 8506 at 21'								
NGC 5838		VIR	10.9	GAL	3.7m x 1.6m	15h 05.4m	2° 06.0'				O		
					pB,pS - H II 542;In NGC 5846 grp;P w NGC 5848 at 18'								
NGC 5846		VIR	10.0	GAL	4m x 3.7m	15h 06.5m	1° 36.0'				O		
					vB,pL,R,psbMN,F* inv S,n of 2 - H I 128;Brightest in group;P w NGC 5846A at 1';NGC 5850 10'ESE								
NGC 5850		VIR	10.8	GAL	4.5m x 3.9m	15h 07.1m	1° 33.0'						
					cF,S,IE,psbM - H II 543;In NGC 5846 group;vBN w bar								
NGC 5904	M5	SER	5.8	GC	19.9m	15h 18.6m	2° 05.0'				O		B
					!!;vB,L,eCM,eRi - st mags 11...;superb cluster								
NGC 5921		SER	10.8	GAL	4.8m x 4m	15h 21.9m	5° 04.0'						
					cB,cL,iR,vsbM*12,am * - H I 148;eBN in B bar								

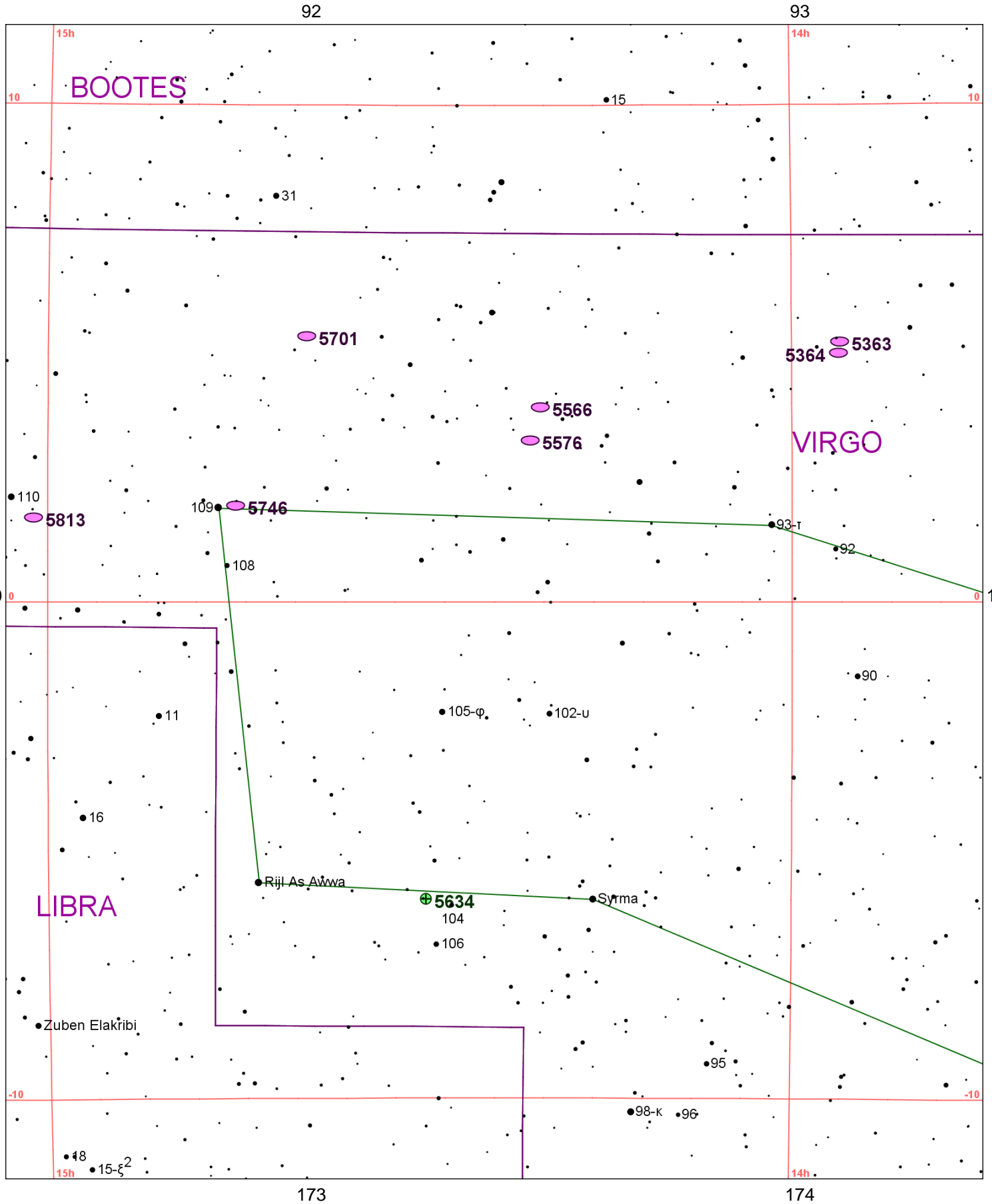


Chart 131

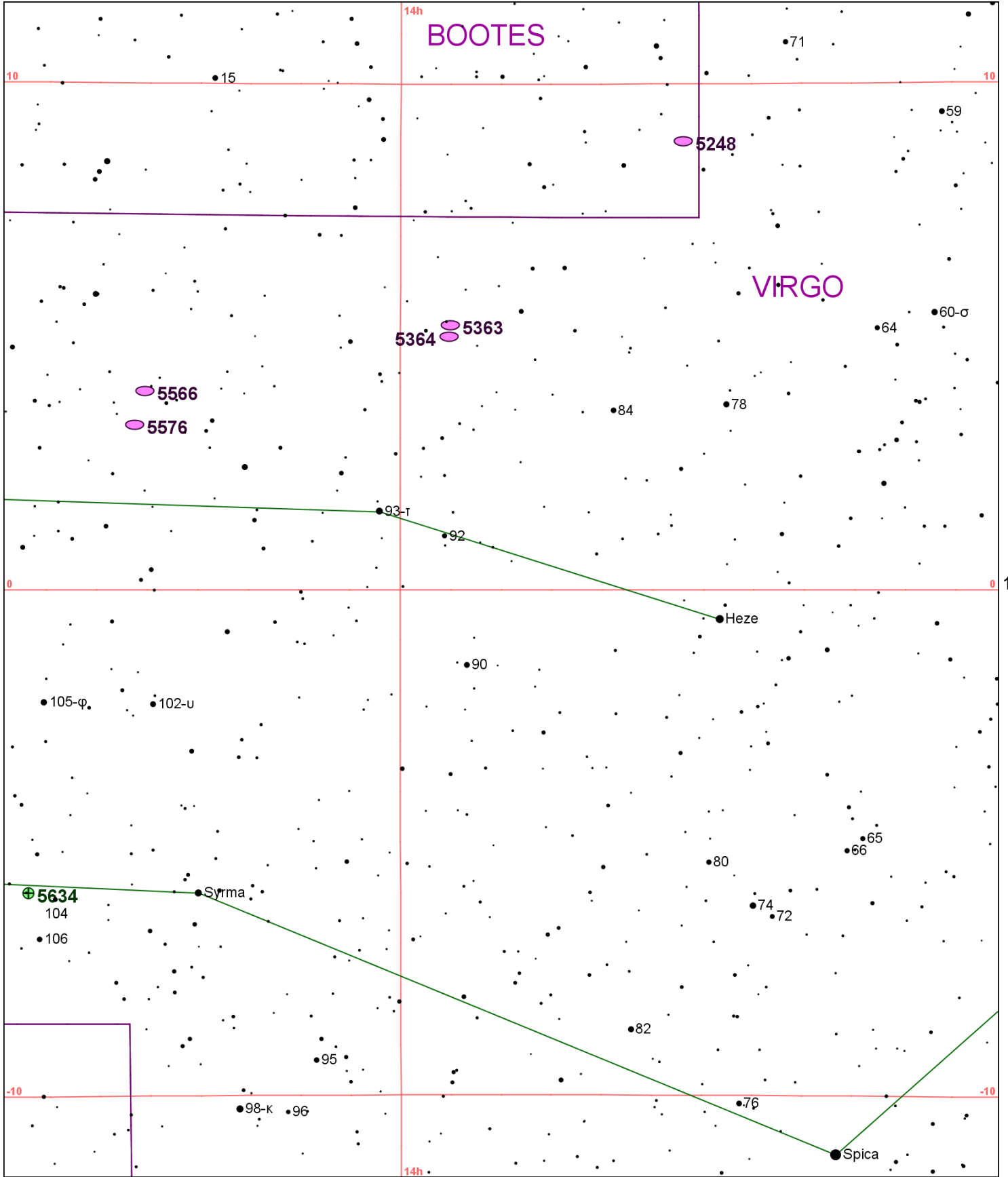
Name	M	Const.	Mag.	Type	Size	R.A.	Decl.	C	R	S	O	# Stars	B
<b>Common</b>					<b>Notes</b>								
NGC 5363		VIR	10.1	GAL	4.6m x 3.1m	13h 56.1m	5° 15.0'				O		
					B,pL,R,psbM,*8 nf - H I 6;P w NGC 5364 at 14.5' 2 B dif N in contact								
NGC 5364		VIR	10.5	GAL	6.1m x 4.2m	13h 56.2m	5° 01.0'						
					cF,L,R,gbM - H II 534;sBN in smooth cent w dk matter								
NGC 5566		VIR	10.6	GAL	6.6m x 2.3m	14h 20.3m	3° 56.0'						
					B,pL,R,psbM,r,*f1.5' - H I 144;double galaxy								
NGC 5576		VIR	11.0	GAL	3m x 2.3m	14h 21.1m	3° 16.0'						
					B,S,R,vsmbM,brightest of 3 - H I 146;triple group w NGC 5574 at 2.9' and NGC 5577 at 10.3'								
NGC 5634		VIR	11.0	GC	4.9m	14h 29.6m	-5° 59.0'				O		
					vB,cL,R,gbM,rrr,st 19...,*8 sf - H I 70;11 mag star on E edge								
NGC 5701		VIR	10.9	GAL	4.7m x 4.6m	14h 39.2m	5° 22.0'				O		
					cB,pS,R,mbM,*11p15" - H II 575;Several vF;vS comps in field								
NGC 5746		VIR	10.3	GAL	6.9m x 1.2m	14h 44.9m	1° 57.0'		R85	S110	O		
					B,L,vmE170,bM,BN - H I 126;vsBN in B cent.bulge;NGC 5740 at 18';edge on								
NGC 5813		VIR	10.5	GAL	4m x 2.8m	15h 01.2m	1° 42.0'				O		
					B,pS,R,psmbM - H I 127;In NGC 5846 group;P w NGC 5814 at 5';NGC 8506 at 21'								

93

94

BOOTES

VIRGO



131

133

174

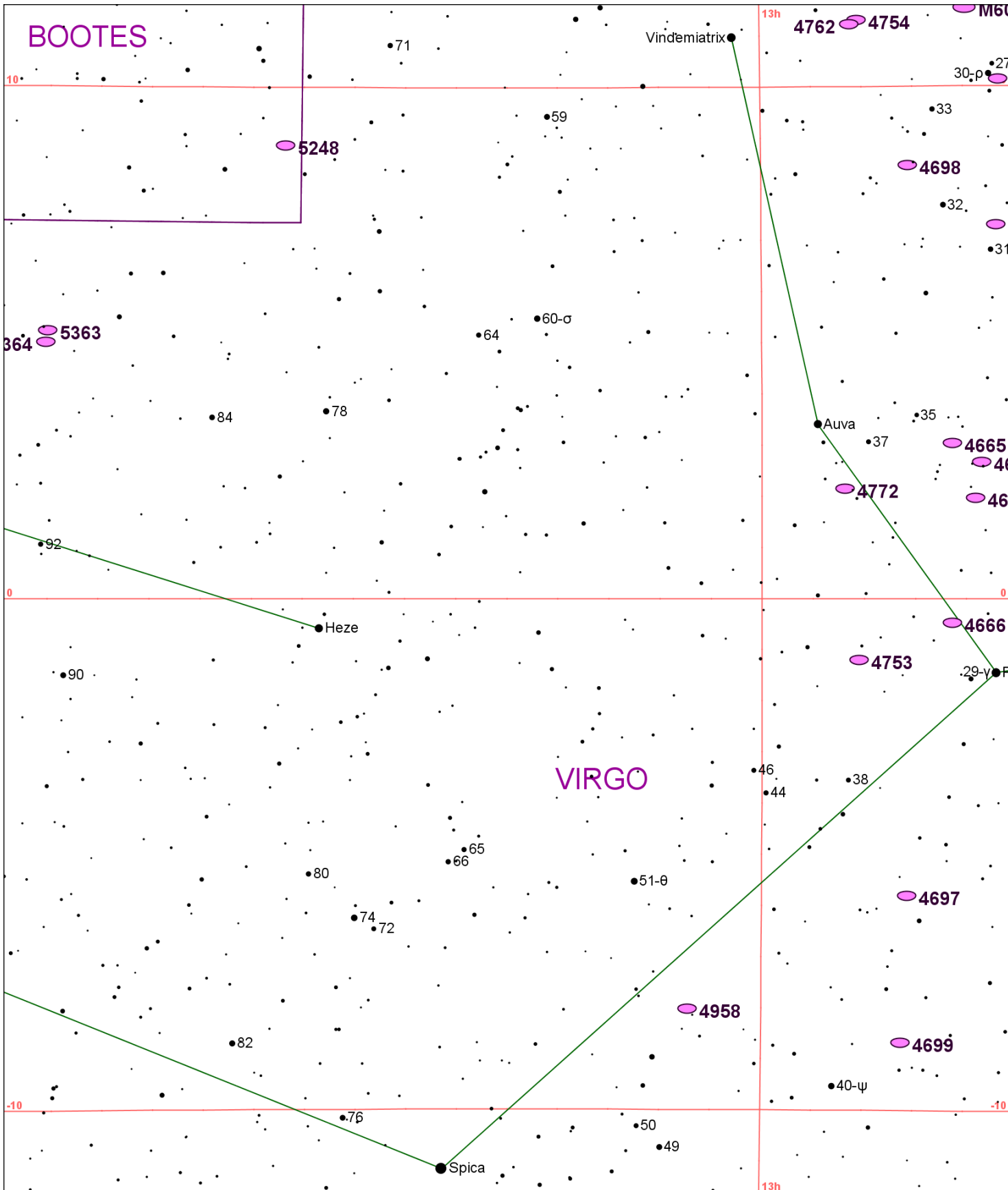
175

Chart 132

Name	M	Const.	Mag.	Type	Size	R.A.	Decl.	C	R	S	O	# Stars	B
<b>Common</b>					<b>Notes</b>								
NGC 5248		BOO	10.3	GAL	5.9m x 4.5m	13h 37.5m	8° 53.0'	C45			O		
					B,L,E150,psbMRN - H I 34;eBN in vB lens w many dk lanes								
NGC 5363		VIR	10.1	GAL	4.6m x 3.1m	13h 56.1m	5° 15.0'				O		
					B,pL,R,psbM,*8 nf - H I 6;P w NGC 5364 at 14.5' 2 B dif N in contact								
NGC 5364		VIR	10.5	GAL	6.1m x 4.2m	13h 56.2m	5° 01.0'						
					cF,L,R,gbM - H II 534;sBN in smooth cent w dk matter								
NGC 5566		VIR	10.6	GAL	6.6m x 2.3m	14h 20.3m	3° 56.0'						
					B,pL,R,psbM,r,*f1.5' - H I 144;double galaxy								
NGC 5576		VIR	11.0	GAL	3m x 2.3m	14h 21.1m	3° 16.0'						
					B,S,R,vsmbM,brightest of 3 - H I 146;triple group w NGC 5574 at 2.9' and NGC 5577 at 10.3'								
NGC 5634		VIR	11.0	GC	4.9m	14h 29.6m	-5° 59.0'				O		
					vB,cL,R,gbM,rrr,st 19....,*8 sf - H I 70;11 mag star on E edge								



94



134

175

Chart 133													
Name	M	Const.	Mag.	Type	Size	R.A.	Decl.	C	R	S	O	# Stars	B
<b>Common</b>					<b>Notes</b>								
NGC 4608		VIR	11.0	GAL	3.3m x 2.9m	12h 41.2m	10° 09.0'				O		
					pB,pL,R,psbM,r,* np 1' - H II 69;NGC 4596 @ 19.0'								
NGC 4612		VIR	10.9	GAL	2.7m x 2m	12h 41.5m	7° 19.0'						
					pB,S,R,psmbM - H II 148								
NGC 4636		VIR	9.5	GAL	5.9m x 4.6m	12h 42.8m	2° 41.0'				O		
					B,L,iR,vgvmbM,r - H II 38								
NGC 4643		VIR	10.8	GAL	3.1m x 2.5m	12h 43.3m	1° 59.0'						
					cB,pS,IE,mbM - H I 10;Saturn-like central mass w projecting ansae								
NGC 4649	M60	VIR	8.8	GAL	7.6m x 6.2m	12h 43.7m	11° 33.0'				O		B
					vB,pL,R,f of Dneb - NGC 4647 @ 2.5'								
NGC 4665		VIR	10.5	GAL	3.5m x 3.5m	12h 45.1m	3° 03.0'						
					B,pL,iR,mbM,*10 sp - H I 142								
NGC 4666		VIR	10.7	GAL	4.5m x 1.4m	12h 45.1m	-0° 28.0'				O		
					B,vL,mE45,psbM - H I 15;NGC 4668 @ 7.3';NGC 4653 @ 20.0';edge on								
NGC 4697		VIR	9.2	GAL	6.2m x 4.5m	12h 48.6m	-5° 48.0'	C52			O		
					vB,L,IE45,smbMN - H I 39								
NGC 4698		VIR	10.6	GAL	4m x 2.9m	12h 48.4m	8° 29.0'						
					cB,pL,iR,bM,r - H I 8								
NGC 4699		VIR	9.5	GAL	3.8m x 2.8m	12h 49.0m	-8° 40.0'		R83	S108	O		
					vB,R,vmbMrN,r - H I 129								
NGC 4753		VIR	9.9	GAL	5.1m x 2.6m	12h 52.4m	-1° 12.0'				O		
					cB,L,vIE,vglbM - H I 16;SN 1965i								
NGC 4754		VIR	10.6	GAL	4.4m x 2.4m	12h 52.3m	11° 19.0'						
					B,pL,R,psbM,p of 2 - H I 25;P w NGC 4762 11' to NW								
NGC 4762		VIR	10.3	GAL	8.6m x 2m	12h 52.9m	11° 14.0'		R84	S109	O		
					pB,vmE31,3 B * s,f of 2 - H II 75;NGC 4754 @ 10.5';thick streak w tufts at ends								
NGC 4772		VIR	11.0	GAL	3.1m x 1.8m	12h 53.5m	2° 10.0'						
					pF,pS,R,mbM - H II 24								
NGC 4958		VIR	10.7	GAL	3.9m x 1.4m	13h 05.8m	-8° 01.0'				O		
					vB,pS,E,bMBN - H I 130;Lenticular								
NGC 5248		BOO	10.3	GAL	5.9m x 4.5m	13h 37.5m	8° 53.0'	C45			O		
					B,L,E150,psbMRN - H I 34;eBN in vB lens w many dk lanes								
NGC 5363		VIR	10.1	GAL	4.6m x 3.1m	13h 56.1m	5° 15.0'				O		
					B,pL,R,psbM,*8 nf - H I 6;P w NGC 5364 at 14.5' 2 B dif N in contact								
NGC 5364		VIR	10.5	GAL	6.1m x 4.2m	13h 56.2m	5° 01.0'						
					cF,L,R,gbM - H II 534;sBN in smooth cent w dk matter								

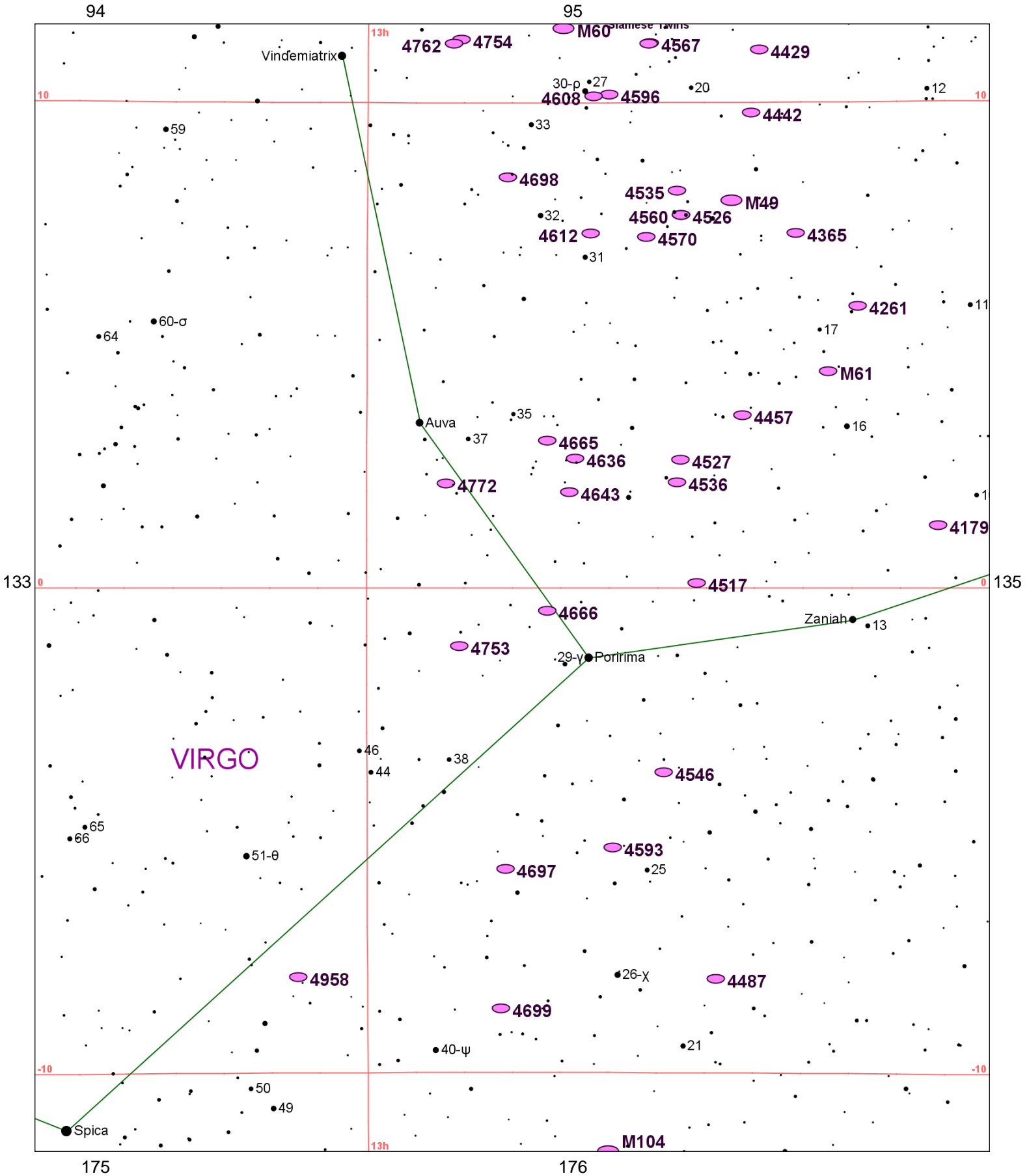


Chart 134													
Name	M	Const.	Mag.	Type	Size	R.A.	Decl.	C	R	S	O	# Stars	B
<b>Common</b>					<b>Notes</b>								
NGC 4179		VIR	11.0	GAL	4.2m x 1.3m	12h 12.9m	1° 18.0'						
					pB,pS,pmE135,bMN - H I 9;edge on spindle shape								
NGC 4261		VIR	10.4	GAL	3.8m x 3.5m	12h 19.4m	5° 49.0'				O		
					pB,pS,R,gbM - H II 139;NGC 4264 @ 3.4';NGC 4257 @ 7.1;UGC 7360;3C270								
NGC 4303	M61	VIR	9.6	GAL	6.5m x 5.9m	12h 21.9m	4° 28.0'				O		B
					vB,vL,vsbM*,biN - SN 1926;1961;1964;NGC 4301 @ 10.0';H I 139:L face-on spiral								
NGC 4365		VIR	9.6	GAL	6.5m x 4.9m	12h 24.5m	7° 19.0'				O		
					cB,pL,vIE,gl,smbM - H I 30;NGC 4370 @ 10.0'								
NGC 4429		VIR	10.0	GAL	5.8m x 2.8m	12h 27.4m	11° 06.0'				O		
					B,L,cE,psbM,*10 nf - H II 65;oval w large outer ring								
NGC 4442		VIR	10.4	GAL	4.5m x 1.8m	12h 28.1m	9° 48.0'				O		
					vB,pL,R,smbM - H II 156								
NGC 4457		VIR	10.9	GAL	2.6m x 2.3m	12h 29.0m	3° 34.0'						
					cB,pS,R,smbMN,vBN - H II 35								
NGC 4472	M49	VIR	8.4	GAL	9.8m x 8.2m	12h 29.8m	8° 00.0'				O		B
					vB,L,R,mbM,r - NGC 4467 @ 4.2';NGC 4470 @ 10.5';NGC 4465 @ 5.8'								
NGC 4487		VIR	10.9	GAL	4m x 2.8m	12h 31.1m	-8° 03.0'						
					F,vL,er - H II 776;Coarse structured spiral								
NGC 4517		VIR	10.4	GAL	10.2m x 1.7m	12h 32.8m	0° 07.0'		R79		O		
					cB,vL,vmE89,pB*in cont - H IV 5;NGC 4517A @ 17.0';long narrow streak w dust patches								
NGC 4526		VIR	9.7	GAL	7m x 2.5m	12h 34.0m	7° 42.0'		R80	S105	O		
					vB,vL,mE120,psmbM - H I 31;lenticular;between two 7th mag stars								
NGC 4527		VIR	10.5	GAL	5.9m x 2.3m	12h 34.1m	2° 39.0'				O		
					pB,L,pmE69,mbM,vseBN or * - H II 37;SN 1915a;NGC 4536 @ 29.0								
NGC 4535		VIR	10.0	GAL	6.9m x 5.4m	12h 34.3m	8° 12.0'		R81	S106	O		
					pF,vL,r,vseBN or * - H II 500;Ho 420b @ 5.0';S-shaped spiral								
NGC 4536		VIR	10.6	GAL	7.1m x 3.1m	12h 34.4m	2° 11.0'				O		
					B,vL,mE110,sbM,er - H V 2;NGC 4533 @ 8.2';high tilt spiral w long curvd arms								
NGC 4546		VIR	10.3	GAL	3.3m x 1.6m	12h 35.5m	-3° 48.0'				O		
					vB,cL,pmE78,vsmbMN - H I 160								
NGC 4560		VIR	10.6	GAL	7m x 2.5m	12h 34.0m	7° 42.0'						
					cB,pL,R,gbM - H I 119								
NGC 4567		VIR	11.3	GAL	3.1m x 2.2m	12h 36.5m	11° 15.0'		R82	S107	O		
					vF,L,np of Dneb - H IV 8;NGC 4568 @ 1.2';Siamese Twins								
NGC 4568		VIR	10.8	GAL	4.6m x 2.2m	12h 36.6m	11° 14.0'						
					Siamese Twins								
					vF,L,sf of Dneb - H IV 9;NGC 4567 @ 1.2';overlaps 4567								
NGC 4570		VIR	10.9	GAL	3.7m x 1.2m	12h 36.9m	7° 15.0'						
					cB,pS,mE0,sbM - H I 32;lens shaped;in field of R VIR								
NGC 4593		VIR	10.9	GAL	3.7m x 2.6m	12h 39.7m	-5° 21.0'						
					pB,cL,E,sbMN=*,vBN in smooth bar - H II 183;Extended central mass w extensive outer arms;NGC 4602 nr								
NGC 4594	M104	VIR	8.0	GAL	8.6m x 4.2m	12h 40.0m	-11° 37.0'				O		B
					Sombrero Galaxy								
					lvB,vL,eE92,vsmbMN - H I 43;dark equatorial lane								
NGC 4596		VIR	10.4	GAL	4m x 3.4m	12h 39.9m	10° 11.0'				O		
					B,pS,R,gmbM,r,3 * f - H I 24;NGC 4608 @ 19.0';disc w projecting ansae								
NGC 4608		VIR	11.0	GAL	3.3m x 2.9m	12h 41.2m	10° 09.0'				O		
					pB,pL,R,psbM,r,* np 1' - H II 69;NGC 4596 @ 19.0'								
NGC 4612		VIR	10.9	GAL	2.7m x 2m	12h 41.5m	7° 19.0'						
					pB,S,R,psmbM - H II 148								
NGC 4636		VIR	9.5	GAL	5.9m x 4.6m	12h 42.8m	2° 41.0'				O		
					B,L,iR,vgvmbM,r - H II 38								
NGC 4643		VIR	10.8	GAL	3.1m x 2.5m	12h 43.3m	1° 59.0'						
					cB,pS,IE,mbM - H I 10;Saturn-like central mass w projecting ansae								
NGC 4649	M60	VIR	8.8	GAL	7.6m x 6.2m	12h 43.7m	11° 33.0'				O		B
					vB,pL,R,f of Dneb - NGC 4647 @ 2.5'								
NGC 4665		VIR	10.5	GAL	3.5m x 3.5m	12h 45.1m	3° 03.0'						
					B,pL,iR,mbM,*10 sp - H I 142								

Chart 134

Name	M	Const.	Mag.	Type	Size	R.A.	Decl.	C	R	S	O	# Stars	B
<b>Common</b>					<b>Notes</b>								
NGC 4666		VIR	10.7	GAL	4.5m x 1.4m	12h 45.1m	-0° 28.0'				O		
					B,vL,mE45,psbM - H I 15;NGC 4668 @ 7.3';NGC 4653 @ 20.0';edge on								
NGC 4697		VIR	9.2	GAL	6.2m x 4.5m	12h 48.6m	-5° 48.0'	C52			O		
					vB,L,IE45,smbMN - H I 39								
NGC 4698		VIR	10.6	GAL	4m x 2.9m	12h 48.4m	8° 29.0'						
					cB,pL,iR,bM,r - H I 8								
NGC 4699		VIR	9.5	GAL	3.8m x 2.8m	12h 49.0m	-8° 40.0'		R83	S108	O		
					vB,R,vmbMrN,r - H I 129								
NGC 4753		VIR	9.9	GAL	5.1m x 2.6m	12h 52.4m	-1° 12.0'				O		
					cB,L,vIE,vglbM - H I 16;SN 1965i								
NGC 4754		VIR	10.6	GAL	4.4m x 2.4m	12h 52.3m	11° 19.0'						
					B,pL,R,psbM,p of 2 - H I 25;P w NGC 4762 11' to NW								
NGC 4762		VIR	10.3	GAL	8.6m x 2m	12h 52.9m	11° 14.0'		R84	S109	O		
					pB,vmE31,3 B * s,f of 2 - H II 75;NGC 4754 @ 10.5';thick streak w tufts at ends								
NGC 4772		VIR	11.0	GAL	3.1m x 1.8m	12h 53.5m	2° 10.0'						
					pF,pS,R,mbM - H II 24								
NGC 4958		VIR	10.7	GAL	3.9m x 1.4m	13h 05.8m	-8° 01.0'				O		
					vB,pS,E,bMBN - H I 130;Lenticular								

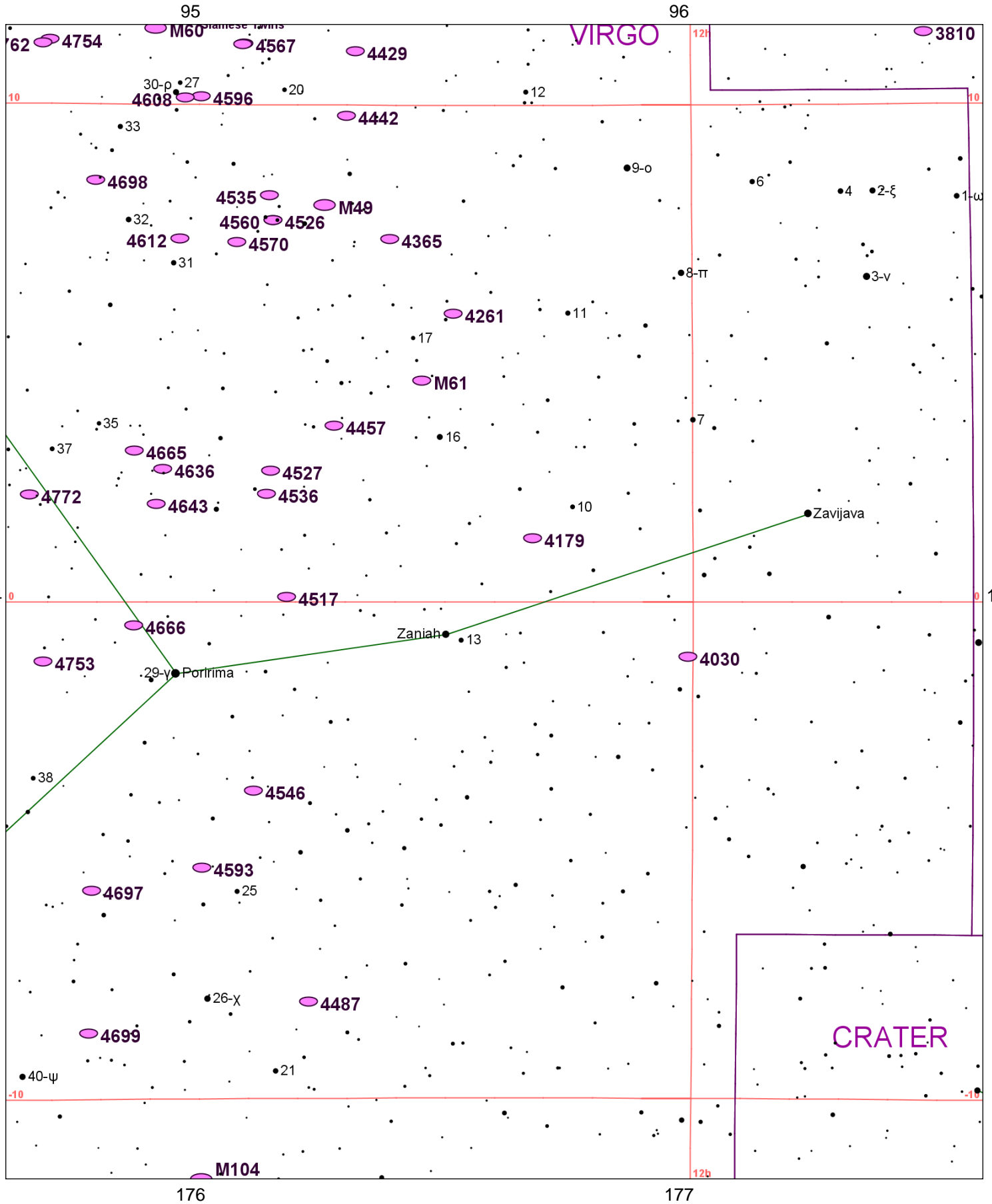


Chart 135													
Name	M	Const.	Mag.	Type	Size	R.A.	Decl.	C	R	S	O	# Stars	B
<b>Common</b>					<b>Notes</b>								
NGC 3810		LEO	10.8	GAL	4.1m x 2.7m	11h 41.0m	11° 28.0'				O		
					B,L,vIE - H I 21								
NGC 4030		VIR	10.6	GAL	4.2m x 3.2m	12h 00.4m	-1° 06.0'						
					cB,L,vIE,psmbM,B* nr - H I 121;fine nearly face on spiral								
NGC 4179		VIR	11.0	GAL	4.2m x 1.3m	12h 12.9m	1° 18.0'						
					pB,pS,pmE135,bMN - H I 9;edge on spindle shape								
NGC 4261		VIR	10.4	GAL	3.8m x 3.5m	12h 19.4m	5° 49.0'				O		
					pB,pS,R,gbM - H II 139;NGC 4264 @ 3.4';NGC 4257 @ 7.1';UGC 7360;3C270								
NGC 4303	M61	VIR	9.6	GAL	6.5m x 5.9m	12h 21.9m	4° 28.0'				O		B
					vB,vL,vsbM*,biN - SN 1926;1961;1964;NGC 4301 @ 10.0';H I 139:L face-on spiral								
NGC 4365		VIR	9.6	GAL	6.5m x 4.9m	12h 24.5m	7° 19.0'				O		
					cB,pL,vIE,gl,smB - H I 30;NGC 4370 @ 10.0'								
NGC 4429		VIR	10.0	GAL	5.8m x 2.8m	12h 27.4m	11° 06.0'				O		
					B,L,cE,psbM,*10 nf - H II 65;oval w large outer ring								
NGC 4442		VIR	10.4	GAL	4.5m x 1.8m	12h 28.1m	9° 48.0'				O		
					vB,pL,R,smB - H II 156								
NGC 4457		VIR	10.9	GAL	2.6m x 2.3m	12h 29.0m	3° 34.0'						
					cB,pS,R,smBMN,vBN - H II 35								
NGC 4472	M49	VIR	8.4	GAL	9.8m x 8.2m	12h 29.8m	8° 00.0'				O		B
					vB,L,R,mbM,r - NGC 4467 @ 4.2';NGC 4470 @ 10.5';NGC 4465 @ 5.8'								
NGC 4487		VIR	10.9	GAL	4m x 2.8m	12h 31.1m	-8° 03.0'						
					F,vL,er - H II 776;Coarse structured spiral								
NGC 4517		VIR	10.4	GAL	10.2m x 1.7m	12h 32.8m	0° 07.0'		R79		O		
					cB,vL,vmE89,pB*in cont - H IV 5;NGC 4517A @ 17.0';long narrow streak w dust patches								
NGC 4526		VIR	9.7	GAL	7m x 2.5m	12h 34.0m	7° 42.0'		R80	S105	O		
					vB,vL,mE120,psmbM - H I 31;lenticular;between two 7th mag stars								
NGC 4527		VIR	10.5	GAL	5.9m x 2.3m	12h 34.1m	2° 39.0'				O		
					pB,L,pmE69,mbM,vseBN or * - H II 37;SN 1915a;NGC 4536 @ 29.0								
NGC 4535		VIR	10.0	GAL	6.9m x 5.4m	12h 34.3m	8° 12.0'		R81	S106	O		
					pF,vL,r,vseBN or * - H II 500;Ho 420b @ 5.0';S-shaped spiral								
NGC 4536		VIR	10.6	GAL	7.1m x 3.1m	12h 34.4m	2° 11.0'				O		
					B,vL,mE110,sbM,er - H V 2;NGC 4533 @ 8.2';high tilt spiral w long curvd arms								
NGC 4546		VIR	10.3	GAL	3.3m x 1.6m	12h 35.5m	-3° 48.0'				O		
					vB,cL,pmE78,vsmbMN - H I 160								
NGC 4560		VIR	10.6	GAL	7m x 2.5m	12h 34.0m	7° 42.0'						
					cB,pL,R,gbM - H I 119								
NGC 4567		VIR	11.3	GAL	3.1m x 2.2m	12h 36.5m	11° 15.0'		R82	S107	O		
					vF,L,np of Dneb - H IV 8;NGC 4568 @ 1.2';Siamese Twins								
NGC 4568		VIR	10.8	GAL	4.6m x 2.2m	12h 36.6m	11° 14.0'						
					Siamese Twins								
					vF,L,sf of Dneb - H IV 9;NGC 4567 @ 1.2';overlaps 4567								
NGC 4570		VIR	10.9	GAL	3.7m x 1.2m	12h 36.9m	7° 15.0'						
					cB,pS,mE0,sbM - H I 32;lens shaped;in field of R VIR								
NGC 4593		VIR	10.9	GAL	3.7m x 2.6m	12h 39.7m	-5° 21.0'						
					pB,cL,E,sbMN=*,vBN in smooth bar - H II 183;Extended central mass w extensive outer arms;NGC 4602 nr								
NGC 4594	M104	VIR	8.0	GAL	8.6m x 4.2m	12h 40.0m	-11° 37.0'				O		B
					Sombrero Galaxy								
					lvB,vL,eE92,vsmbMN - H I 43;dark equatorial lane								
NGC 4596		VIR	10.4	GAL	4m x 3.4m	12h 39.9m	10° 11.0'				O		
					B,pS,R,gmbM,r,3 * f - H I 24;NGC 4608 @ 19.0';disc w projecting ansae								
NGC 4608		VIR	11.0	GAL	3.3m x 2.9m	12h 41.2m	10° 09.0'				O		
					pB,pL,R,psbM,r,* np 1' - H II 69;NGC 4596 @ 19.0'								
NGC 4612		VIR	10.9	GAL	2.7m x 2m	12h 41.5m	7° 19.0'						
					pB,S,R,psmbM - H II 148								
NGC 4636		VIR	9.5	GAL	5.9m x 4.6m	12h 42.8m	2° 41.0'				O		
					B,L,iR,vgvmbM,r - H II 38								
NGC 4643		VIR	10.8	GAL	3.1m x 2.5m	12h 43.3m	1° 59.0'						
					cB,pS,IE,mbM - H I 10;Saturn-like central mass w projecting ansae								

Chart 135

Name	M	Const.	Mag.	Type	Size	R.A.	Decl.	C	R	S	O	# Stars	B
<b>Common</b>					<b>Notes</b>								
NGC 4649	M60	VIR	8.8	GAL	7.6m x 6.2m	12h 43.7m	11° 33.0'				O		B
					vB,pL,R,f of Dneb - NGC 4647 @ 2.5'								
NGC 4665		VIR	10.5	GAL	3.5m x 3.5m	12h 45.1m	3° 03.0'						
					B,pL,iR,mbM,*10 sp - H I 142								
NGC 4666		VIR	10.7	GAL	4.5m x 1.4m	12h 45.1m	-0° 28.0'				O		
					B,vL,mE45,psbM - H I 15;NGC 4668 @ 7.3';NGC 4653 @ 20.0';edge on								
NGC 4697		VIR	9.2	GAL	6.2m x 4.5m	12h 48.6m	-5° 48.0'	C52			O		
					vB,L,IE45,smbMN - H I 39								
NGC 4698		VIR	10.6	GAL	4m x 2.9m	12h 48.4m	8° 29.0'						
					cB,pL,iR,bM,r - H I 8								
NGC 4699		VIR	9.5	GAL	3.8m x 2.8m	12h 49.0m	-8° 40.0'		R83	S108	O		
					vB,R,vmbMrN,r - H I 129								
NGC 4753		VIR	9.9	GAL	5.1m x 2.6m	12h 52.4m	-1° 12.0'				O		
					cB,L,vIE,vglbM - H I 16;SN 1965i								
NGC 4754		VIR	10.6	GAL	4.4m x 2.4m	12h 52.3m	11° 19.0'						
					B,pL,R,psbM,p of 2 - H I 25;P w NGC 4762 11' to NW								
NGC 4762		VIR	10.3	GAL	8.6m x 2m	12h 52.9m	11° 14.0'		R84	S109	O		
					pB,vmE31,3 B * s,f of 2 - H II 75;NGC 4754 @ 10.5';thick streak w tufts at ends								
NGC 4772		VIR	11.0	GAL	3.1m x 1.8m	12h 53.5m	2° 10.0'						
					pF,pS,R,mbM - H II 24								



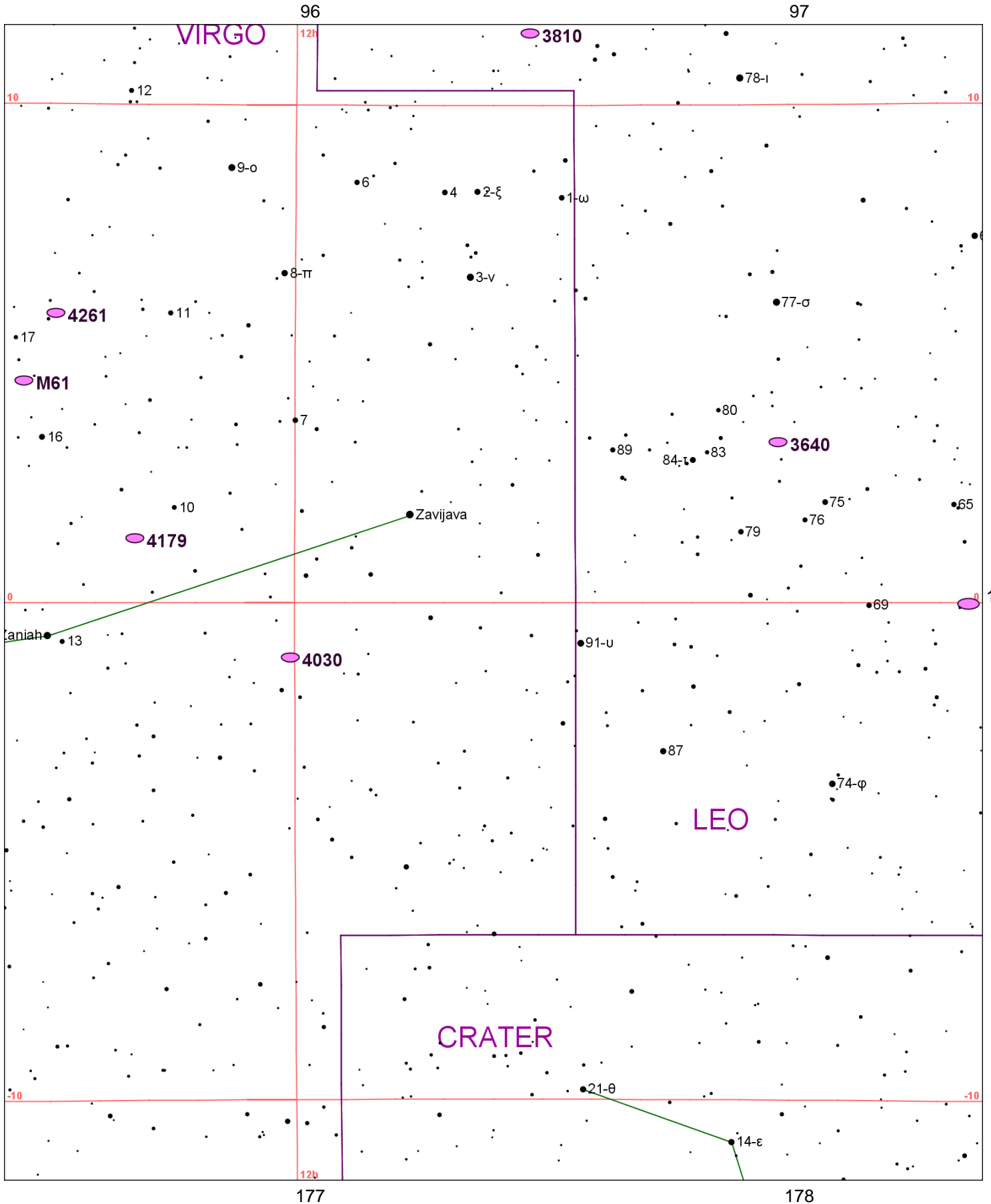


Chart 136													
Name	M	Const.	Mag.	Type	Size	R.A.	Decl.	C	R	S	O	# Stars	B
<b>Common</b>					<b>Notes</b>								
NGC 3521		LEO	9.0	GAL	11.2m x 5.4m	11h 05.8m	-0° 02.0'		R56	S62	O		
cB,cL,mE 140,vsmbMN - H I 13													
NGC 3640		LEO	10.4	GAL	4.5m x 4m	11h 21.1m	3° 14.0'				O		
B,pL,R,psbM - H II 33;P w NGC 3641 at 2.5';PA170													
NGC 3810		LEO	10.8	GAL	4.1m x 2.7m	11h 41.0m	11° 28.0'				O		
B,L,vIE - H I 21													
NGC 4030		VIR	10.6	GAL	4.2m x 3.2m	12h 00.4m	-1° 06.0'						
cB,L,vIE,psmbM,B* nr - H I 121;fine nearly face on spiral													
NGC 4179		VIR	11.0	GAL	4.2m x 1.3m	12h 12.9m	1° 18.0'						
pB,pS,pmE135,bMN - H I 9;edge on spindle shape													
NGC 4261		VIR	10.4	GAL	3.8m x 3.5m	12h 19.4m	5° 49.0'				O		
pB,pS,R,gbM - H II 139;NGC 4264 @ 3.4';NGC 4257 @ 7.1';UGC 7360;3C270													
NGC 4303	M61	VIR	9.6	GAL	6.5m x 5.9m	12h 21.9m	4° 28.0'				O		B
vB,vL,vsbM*,biN - SN 1926;1961;1964;NGC 4301 @ 10.0';H I 139;L face-on spiral													