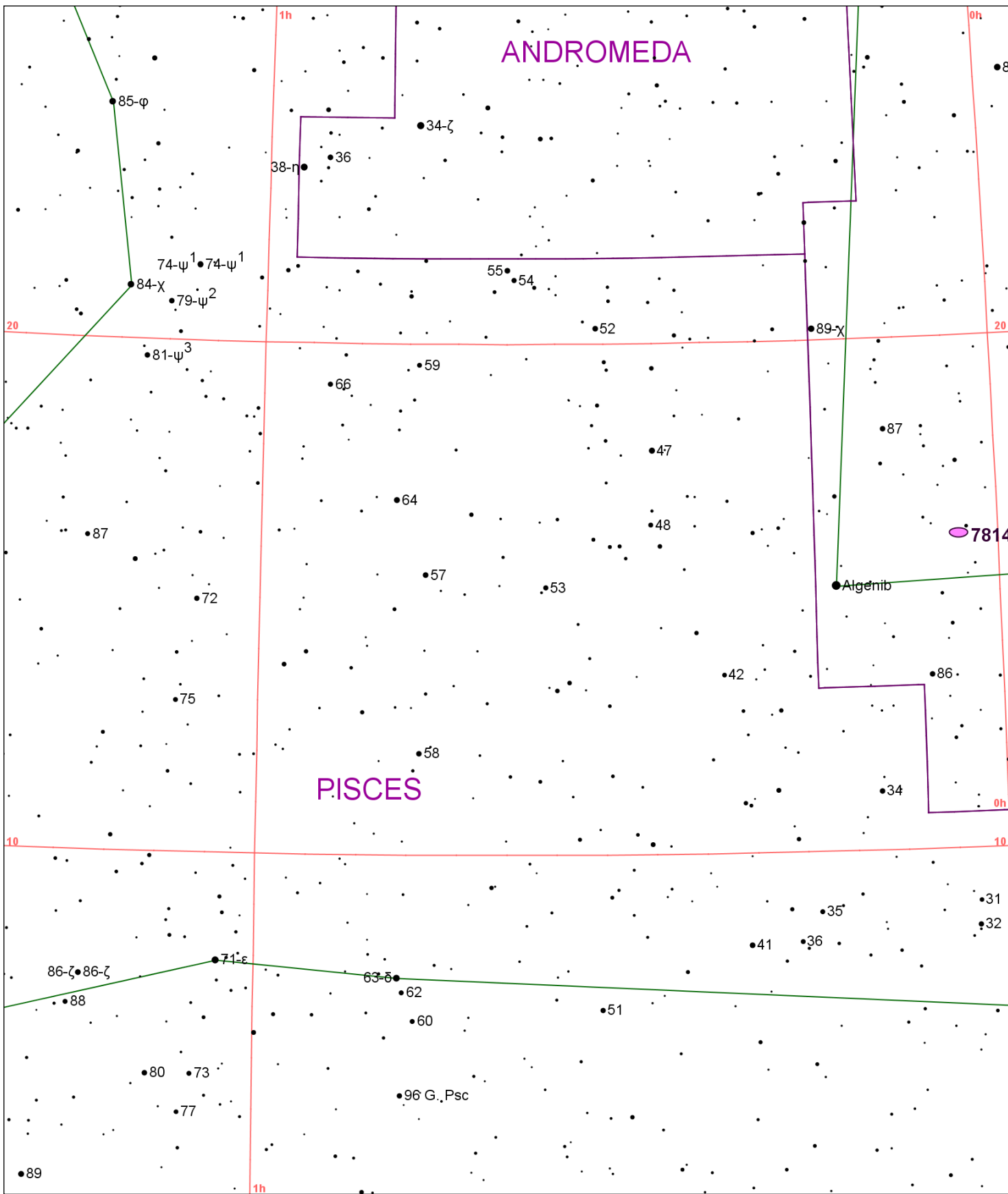


77

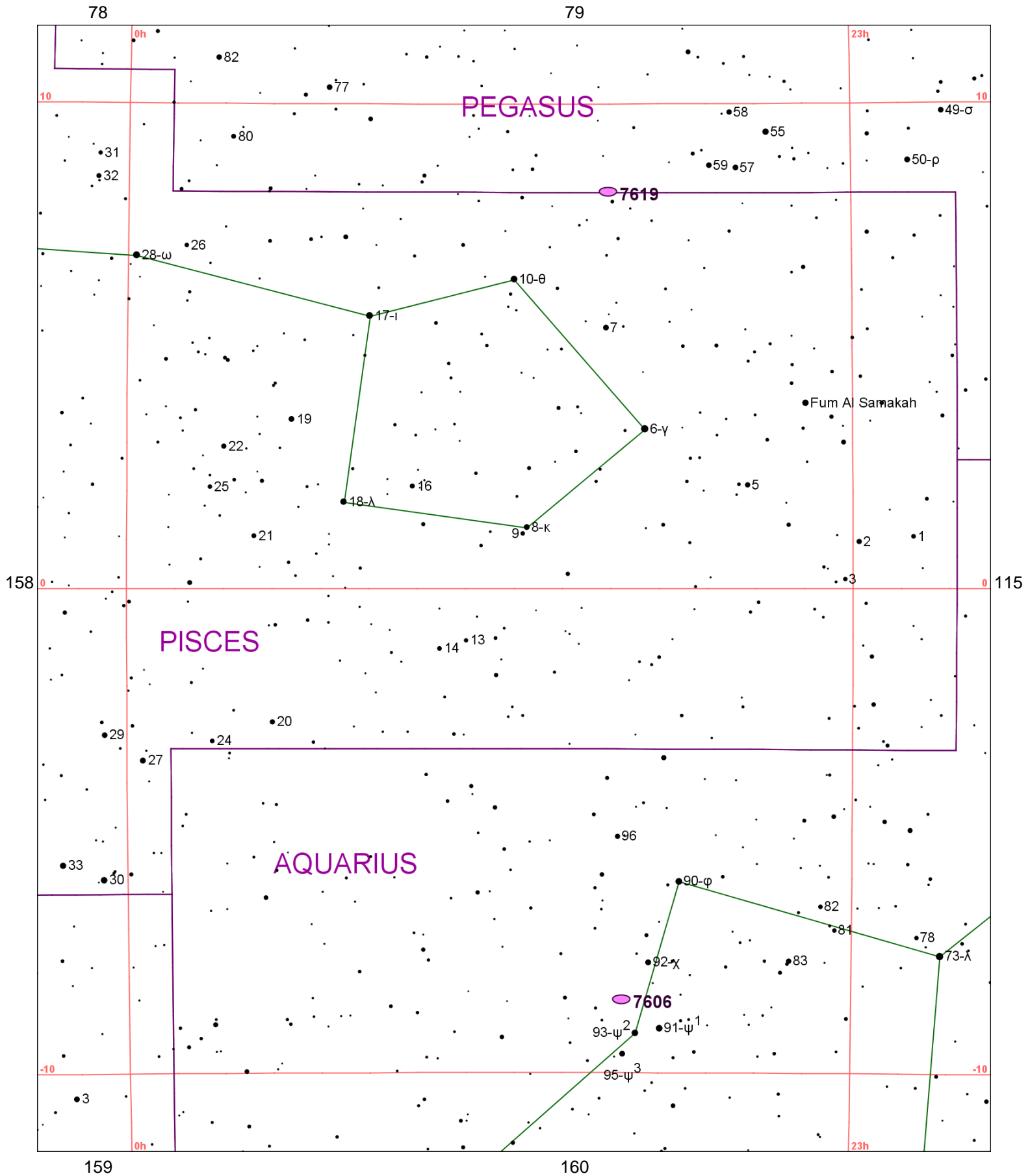


112

78

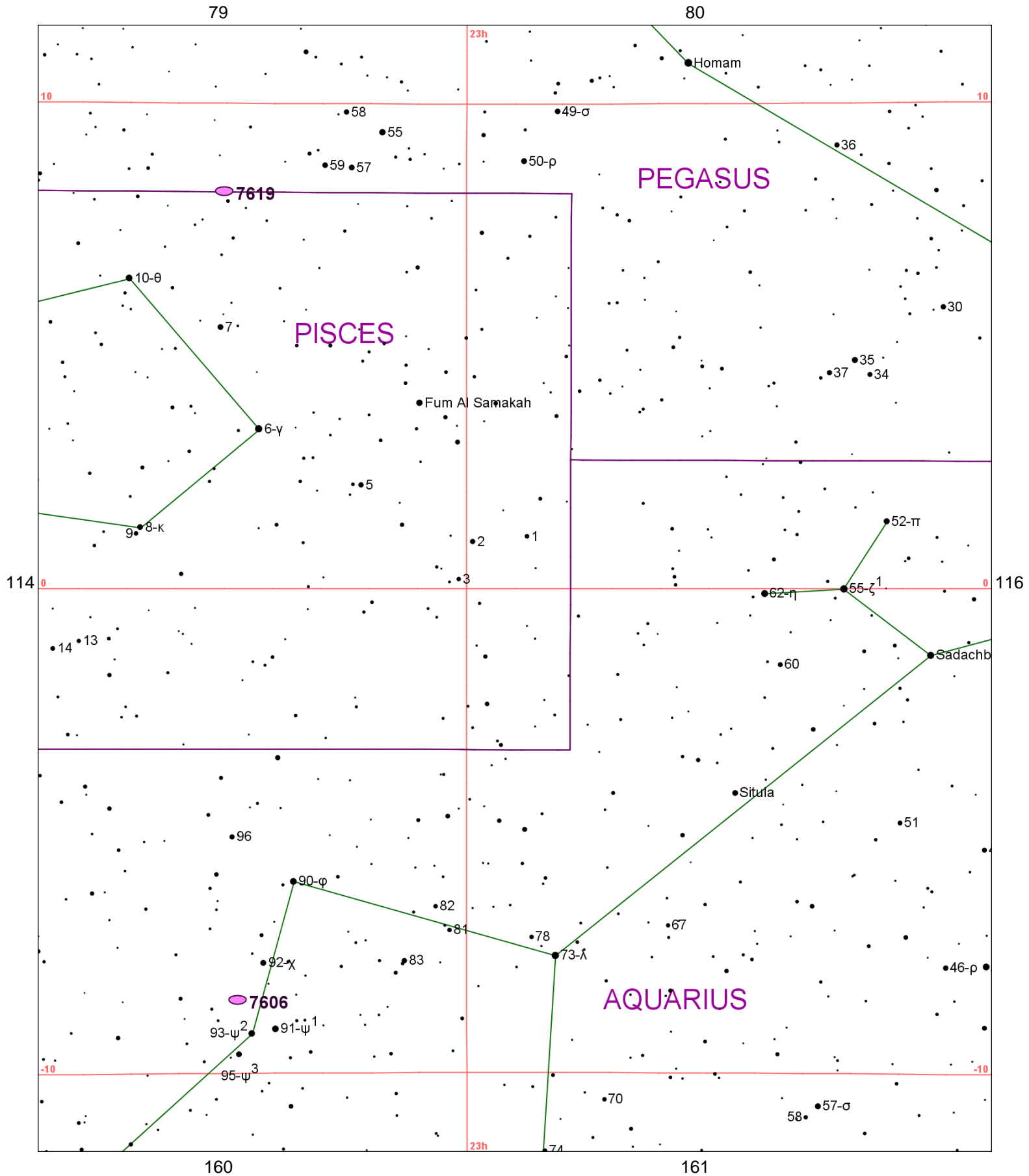
**Chart 113**

Name	M	Const.	Mag.	Type	Size	R.A.	Decl.	C	R	S	O	# Stars	B
<b>Common</b>					<b>Notes</b>								
NGC 7814		PEG	10.6	GAL	4.7m x 2.4m	0h 03.2m	16° 09.0'	C43			O		
					cB,cL,E,vgbM - H II 240;Equatorial dust lane;Nearly edge-on								



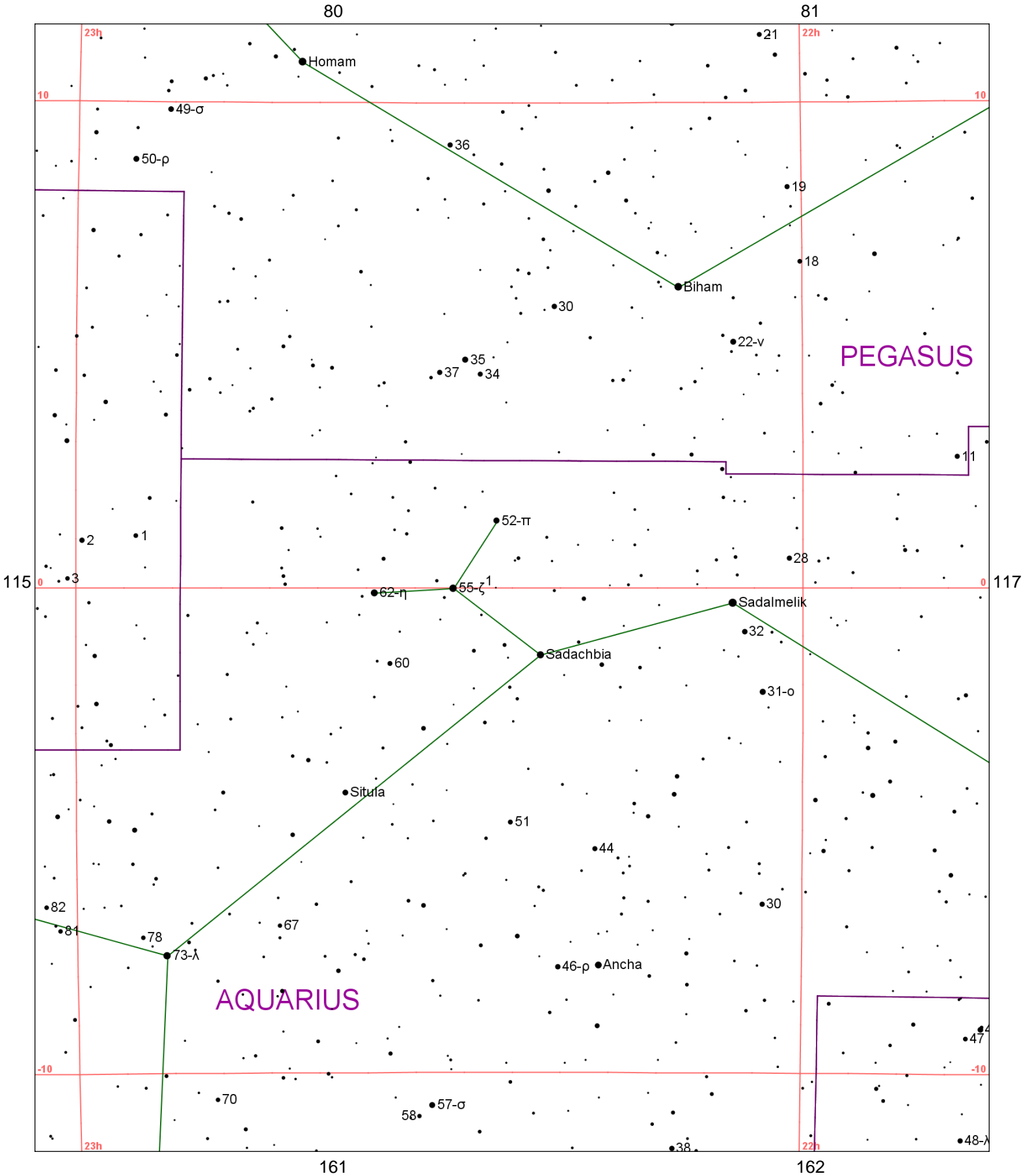
**Chart 114**

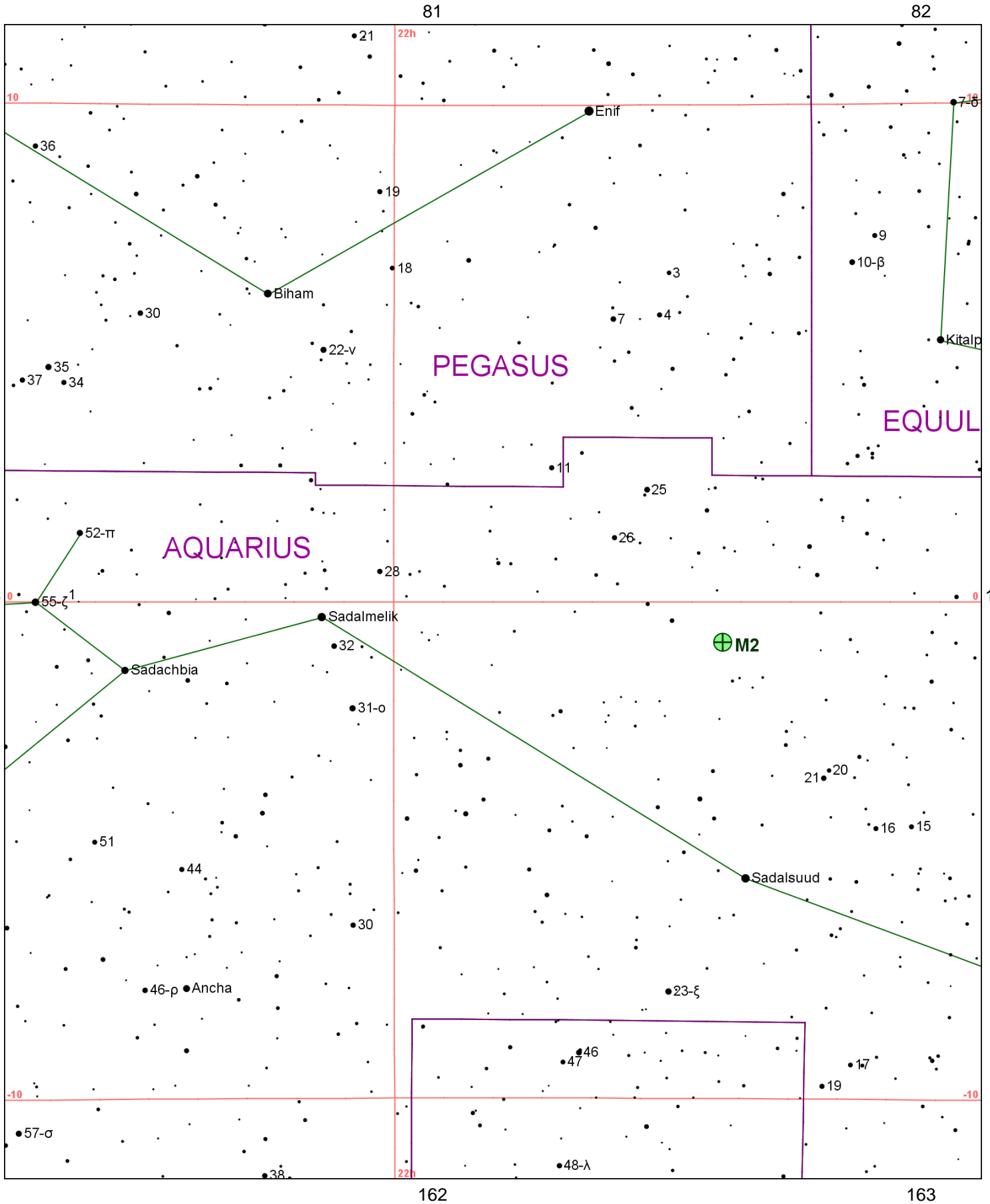
Name	M	Const.	Mag.	Type	Size	R.A.	Decl.	C	R	S	O	# Stars	B
<b>Common</b>					<b>Notes</b>								
NGC 7606		AQR	10.8	GAL	4.2m x 2.3m	23h 19.1m	-8° 29.0'						
					pF,cL,pmE0 - H I 104								
NGC 7619		PEG	11.1	GAL	2.8m x 2.5m	23h 20.2m	8° 12.0'				O		
					cB,pS,R,psbM - H II 439;UGC 12523								



**Chart 115**

Name	M	Const.	Mag.	Type	Size	R.A.	Decl.	C	R	S	O	# Stars	B
<b>Common</b>					<b>Notes</b>								
NGC 7606		AQR	10.8	GAL	4.2m x 2.3m	23h 19.1m	-8° 29.0'						
					pF,cL,pmE0 - H I 104								
NGC 7619		PEG	11.1	GAL	2.8m x 2.5m	23h 20.2m	8° 12.0'				O		
					cB,pS,R,psbM - H II 439;UGC 12523								



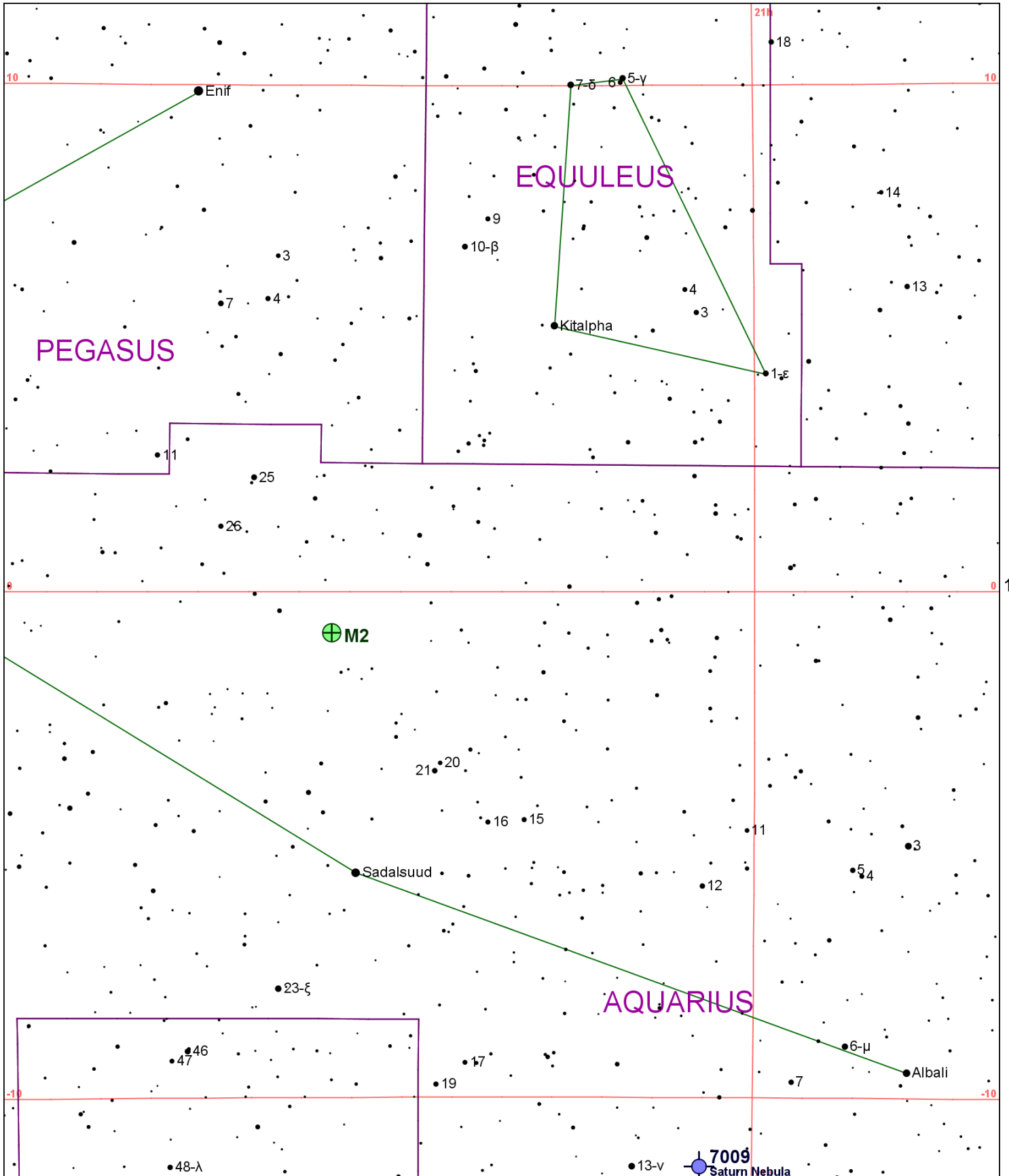




**Chart 117**

<b>Name</b>	<b>M</b>	<b>Const.</b>	<b>Mag.</b>	<b>Type</b>	<b>Size</b>	<b>R.A.</b>	<b>Decl.</b>	<b>C</b>	<b>R</b>	<b>S</b>	<b>O</b>	<b># Stars</b>	<b>B</b>
<b>Common</b>					<b>Notes</b>								
NGC 7089	M2	AQR	6.5	GC	11.7m	21h 33.5m	-0° 49.0'				O		B
					!!B,vL,gpmbM,rrr,st eS - Lord Rosse-Dark area near core;* mags 13...								

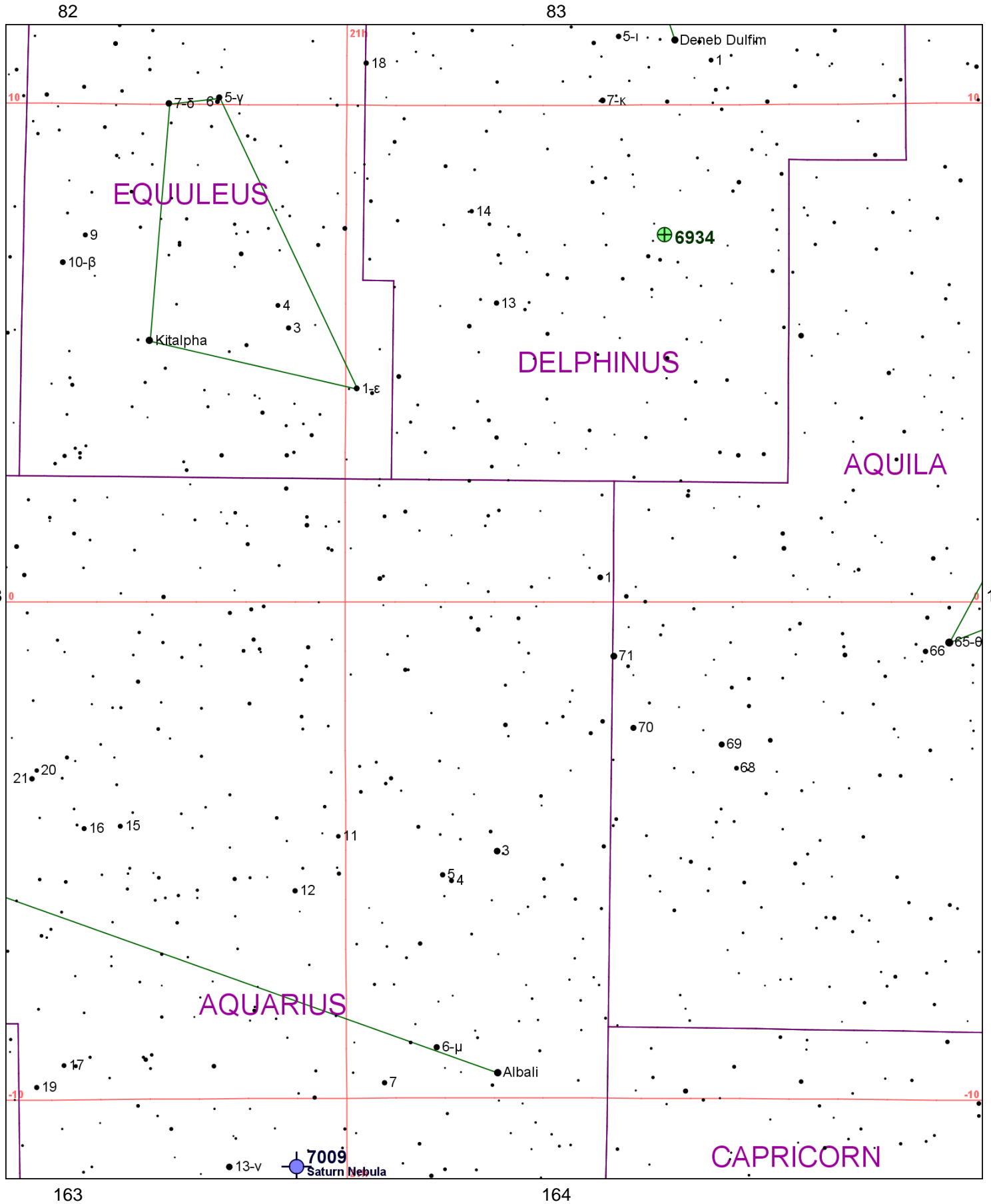
82



163

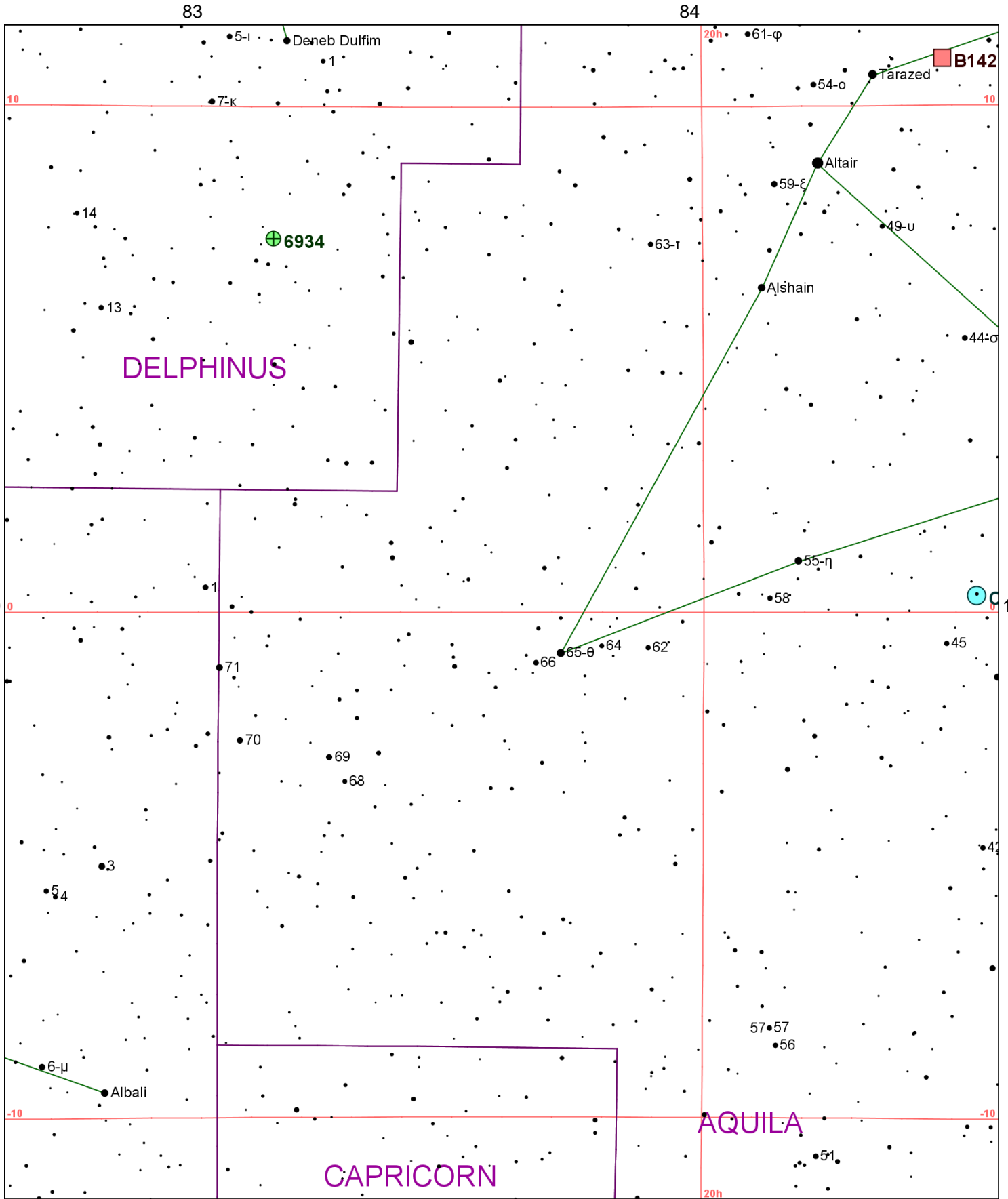
**Chart 118**

Name	M	Const.	Mag.	Type	Size	R.A.	Decl.	C	R	S	O	# Stars	B
<b>Common</b>					<b>Notes</b>								
NGC 7009		AQR	8.3	PN	28s x 23s	21h 04.2m	-11° 22.0'	C55	R1	S4	O		
Saturn Nebula					!!! vB,S,elliptic - H IV 1;bright blue-green disk								
NGC 7089	M2	AQR	6.5	GC	11.7m	21h 33.5m	-0° 49.0'				O		B
					!!B,vL,gpmbM,rrr,st eS - Lord Rosse-Dark area near core;* mags 13...								



**Chart 119**

Name	M	Const.	Mag.	Type	Size	R.A.	Decl.	C	R	S	O	# Stars	B
<b>Common</b>					<b>Notes</b>								
NGC 6934		DEL	8.9	GC	2m	20h 34.2m	7° 24.0'	C47			O		B
					B,L,R,rrr,*16... - H I 103;*10m 2' west								
NGC 7009		AQR	8.3	PN	28s x 23s	21h 04.2m	-11° 22.0'	C55	R1	S4	O		
Saturn Nebula					!!! vB,S,elliptic - H IV 1;bright blue-green disk								



**Chart 120**

Name	M	Const.	Mag.	Type	Size	R.A.	Decl.	C	R	S	O	# Stars	B
<b>Common</b>					<b>Notes</b>								
B142-3		AQL		DN	80m x 50m	19h 40.7m	10° 57.0'				O		
					! L,Irr,2 extensions W - Narrow lanes 3 deg north preceding Altair								
Cr 401		AQL	7.0	OC	1.0m	19h 38.4m	0° 20.0'						
NGC 6934		DEL	8.9	GC	2m	20h 34.2m	7° 24.0'	C47			O		B
					B,L,R,rrr,*16... - H I 103;*10m 2' west								