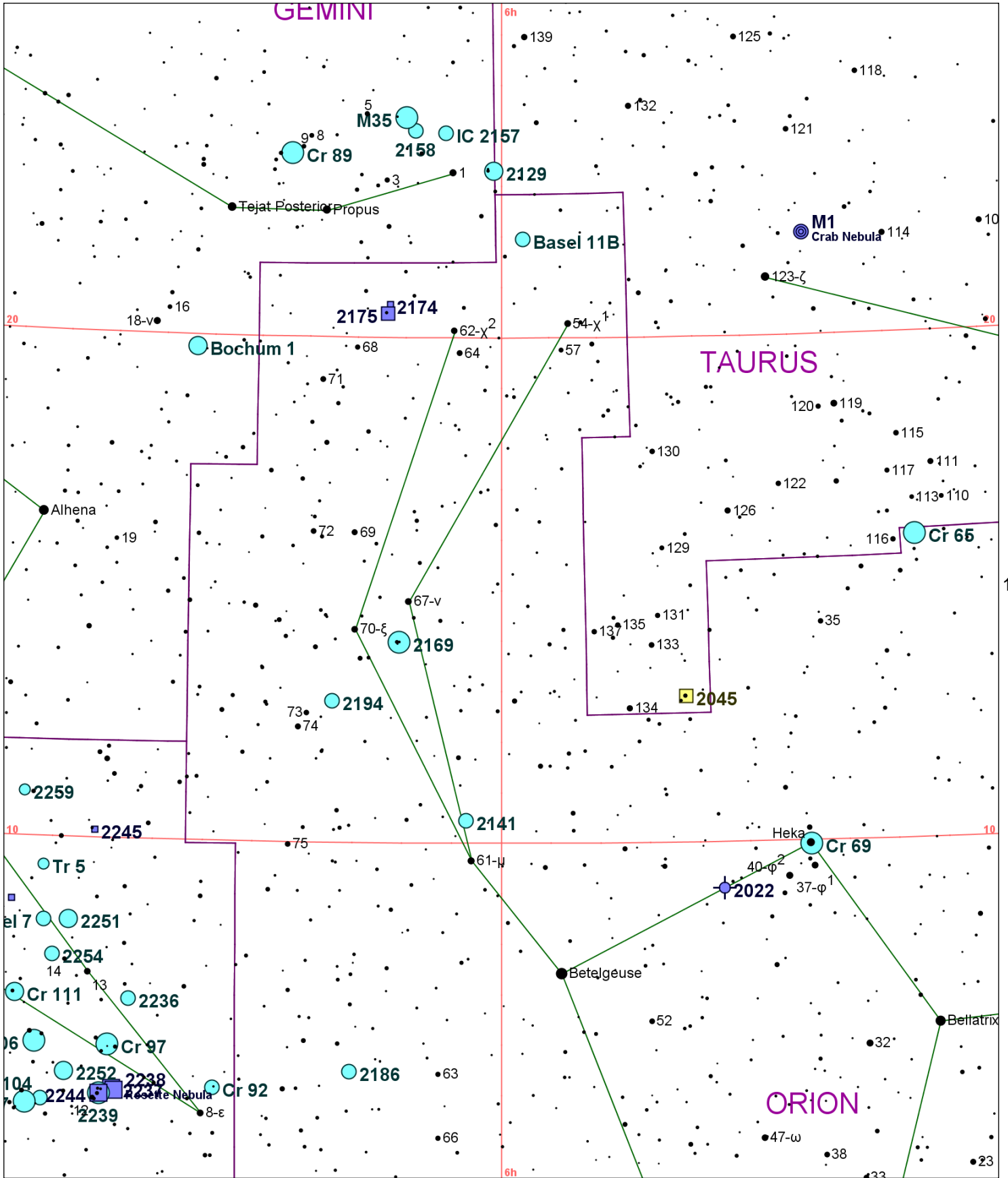


71

72



GEMINI

TAURUS

ORION

146

147

Chart 105													
Name	M	Const.	Mag.	Type	Size	R.A.	Decl.	C	R	S	O	# Stars	B
Common					Notes								
Basel 7		MON	8.5	OC		6h 36.6m	8° 21.0'					15	
Basel 11B		ORI	8.9	OC	10.0m	5h 58.2m	21° 58.0'					12	
Bochum 1		GEM	7.9	OC		6h 25.5m	19° 46.0'						
Cr 65		ORI	3.0	OC	220m	5h 26.0m	16° 00.0'						
Cr 69		ORI	2.8	OC	65m	5h 35.1m	9° 56.0'					20	
					Lambda Ori cluster								
Cr 89		GEM	5.7	OC	35.0m	6h 18.0m	23° 38.0'					15	
Cr 92		MON	8.5	OC	11.0m	6h 22.9m	5° 07.0'						
Cr 97		MON	5.4	OC	21.0m	6h 31.3m	5° 55.0'					15	
Cr 104		MON	9.6	OC	22.0m	6h 36.5m	4° 49.0'					15	
Cr 106		MON	4.6	OC	45.0m	6h 37.1m	5° 57.0'					20	
Cr 107		MON	5.1	OC	35.0m	6h 37.7m	4° 44.0'					15	
Cr 111		MON	7.0	OC	3.2m	6h 38.7m	6° 54.0'						
IC 2157		GEM	8.4	OC	7.0m	6h 04.8m	24° 04.0'					20	
					Cl,S,about 20 F stars								
NGC 1952	M1	TAU	8.4	SR	8m x 4m	5h 34.5m	22° 01.0'				O		B
Crab Nebula					vB,vL,E135,vglbM,r - Rosse saw filaments;cent pulsar 16 mag;3C144								
NGC 2022		ORI	12.8	PN	28s x 27s	5h 42.1m	9° 05.0'		R27	S76			
					pB,vS,vIE - H IV 34;small;faint and distinct w annular form;PK196-10.1								
NGC 2045		TAU	6.6	MISC		5h 45.0m	12° 53.0'						
					*8-9 w F neb								
NGC 2129		GEM	6.7	OC	7.0m	6h 00.7m	23° 19.0'				O	40	
					Cl,pL,40 or 50* 8...15 - H VIII 26								
NGC 2141		ORI	9.4	OC	10.0m	6h 02.9m	10° 27.0'					10	
					F,pS,dif								
NGC 2158		GEM	8.6	OC	5.0m	6h 07.4m	24° 06.0'			S53	O		
					Cl,pS,mC,vRi,irr triangle * eS - H VI 17;150 F* on edge of M 35								
NGC 2168	M35	GEM	5.1	OC	28.0m	6h 08.2m	24° 22.0'				O	200	B
					Cl,vL,eRi,pC,st9...16 - Lord Rosse counted 300*;Orange * invl;NGC 2158 30' SW								
NGC 2169		ORI	5.9	OC	7.0m	6h 08.4m	13° 58.0'					30	B
					Cl,S,IRi,pmC,** (ADS 4728) - H VIII 24;In nebula Ced 78								
NGC 2174		ORI		DN	40m x 30m	6h 09.4m	20° 40.0'				O		
					eF,bet 3 vF * - w IC 2159 sf; contains cluster								
NGC 2175		ORI	6.8	DN	18.0m	6h 09.6m	20° 29.0'					60	
					*8 in neb - In Gem OB1?								
NGC 2186		ORI	8.7	OC	4.0m	6h 12.1m	5° 28.0'					30	
					Cl,pL,pRi,pC,st L and S - H VII 25								
NGC 2194		ORI	8.5	OC	10.0m	6h 13.8m	12° 48.0'		R29	S77	O	80	
					Cl,L,Ri,gvmCM - H VI 5;faint;rich;look for 2169 nearby								
NGC 2236		MON	8.5	OC	7.0m	6h 29.7m	6° 50.0'					50	
					Cl,pRi,pC,*10,12...15 - H VII 5								
NGC 2237		MON	5.5	DN	80m x 60m	6h 30.9m	5° 03.0'	C49	R32		O		
					pB,vvL,dif,part of eL nebs ring ar 2239 - Rosette nebula								
NGC 2238		MON	6.0	DN	80m x 60m	6h 30.7m	5° 01.0'						
Rosette Nebula					F* in neby,part of eL nebs ring ar 2239								
NGC 2239		MON	4.8	OC	24m	6h 31.9m	4° 57.0'					40	
					*8 in L,P,B Cl								
NGC 2244		MON	4.8	DN	24.0m	6h 31.9m	4° 57.0'	C50		S68	O	100	B
					Cl,beautiful,st sc (12 MON) - H VII 2;In Rosette nebula								
NGC 2245		MON		DN	2m x 2m	6h 32.7m	10° 09.0'				O		
					pL,com,mbN sf aim *,*7-8 nf - H IV 3								
NGC 2251		MON	7.3	OC	10.0m	6h 34.6m	8° 22.0'				O	30	B
					Cl,vL,E,Ri,IC - H VIII 3								
NGC 2252		MON	7.7	OC	20.0m	6h 34.7m	5° 22.0'					30	
					Cl,vL,pRi,IC,st S - H VIII 50								
NGC 2254		MON	9.1	OC	4.0m	6h 35.8m	7° 40.0'					50	
					Cl,S,pC,iF,*11...13 - H VII 22								

Chart 105													
Name	M	Const.	Mag.	Type	Size	R.A.	Decl.	C	R	S	O	# Stars	B
Common					Notes								
NGC 2259		MON	10.8	OC	4.5m	6h 38.4m	10° 53.0'					25	
					Cl, cRi, eC, iF, st eS - H VI 28								
NGC 2261		MON		DN	2m x 1m	6h 39.2m	8° 45.0'	C46	R33	S69	O		
Hubble's Variable Nebula					B, vmE 330 deg, N com=*11 - H IV 2; fan-shaped; R Mon invl								
Tr 5		MON	10.9	OC	8.0m	6h 36.7m	9° 26.0'					150	
					One member is variable V 493 Mon--a red carbon star								

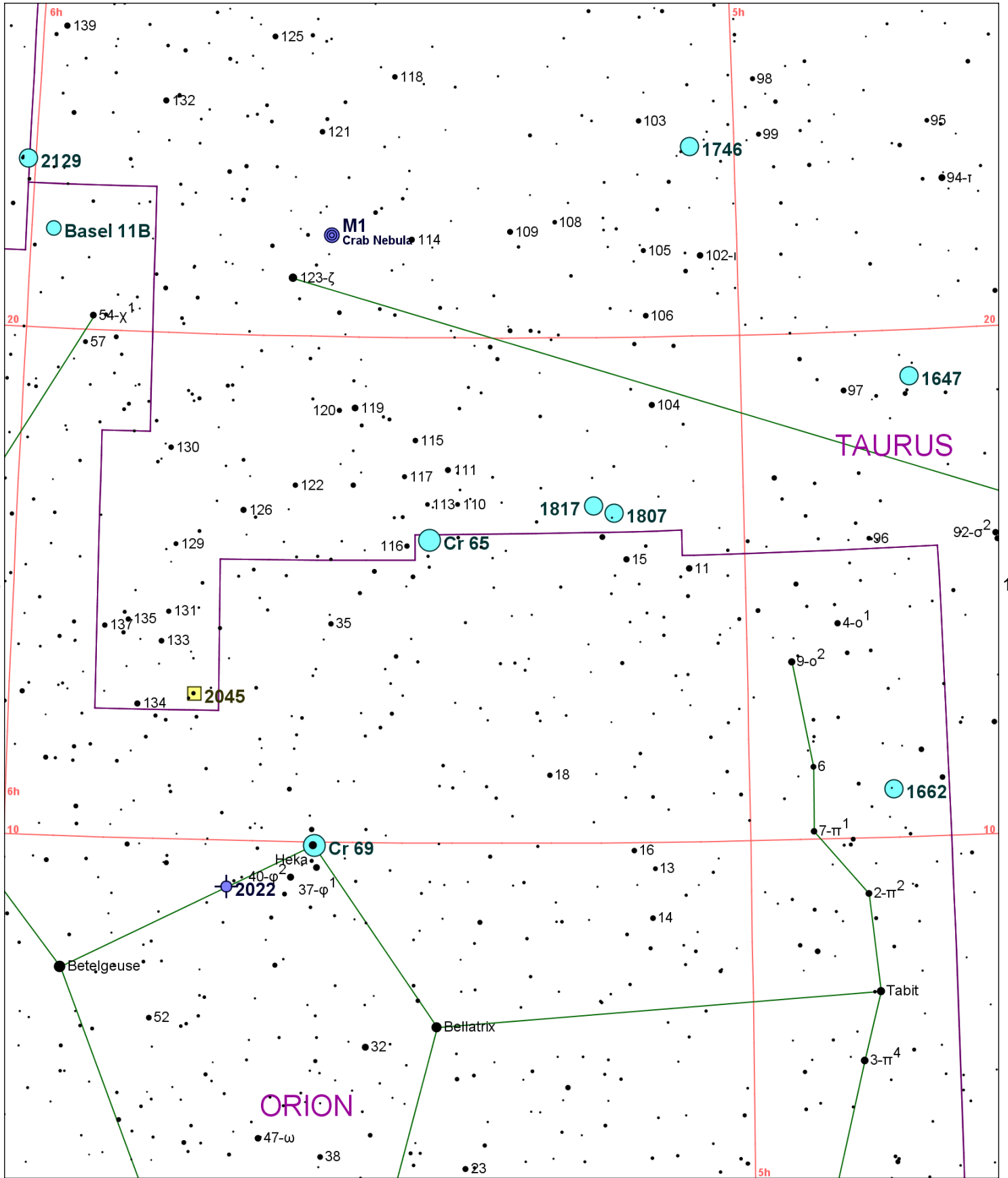


Chart 106													
Name	M	Const.	Mag.	Type	Size	R.A.	Decl.	C	R	S	O	# Stars	B
Common					Notes								
Basel 11B		ORI	8.9	OC	10.0m	5h 58.2m	21° 58.0'					12	
Cr 65		ORI	3.0	OC	220m	5h 26.0m	16° 00.0'						
Cr 69		ORI	2.8	OC	65m	5h 35.1m	9° 56.0'					20	
Lambda Ori cluster													
NGC 1647		TAU	6.4	OC	45m	4h 45.9m	19° 06.0'				O	200	B
Cl,vL,st L,sC - H VIII 8													
NGC 1662		ORI	6.4	OC	20.0m	4h 48.4m	10° 57.0'					35	B
Cl OF L&S sc st - H VII 1													
NGC 1746		TAU	6.1	OC	42m	5h 03.8m	23° 46.0'				O	20	B
Cl,P													
NGC 1807		TAU	7.0	OC	17m	5h 10.7m	16° 32.0'				O	20	B
Cl,pRi,st L & S - 15 * mag 8-9													
NGC 1817		TAU	7.7	OC	16m	5h 12.4m	16° 41.0'				O	60	B
Cl,L,Ri,IC,st11...14 - H VII 4;50 * mags 10 to 14													
NGC 1952	M1	TAU	8.4	SR	8m x 4m	5h 34.5m	22° 01.0'				O		B
Crab Nebula													
NGC 2022		ORI	12.8	PN	28s x 27s	5h 42.1m	9° 05.0'		R27	S76			
pB,vS,vIE - H IV 34;small;faint and distinct w annular form;PK196-10.1													
NGC 2045		TAU	6.6	MISC		5h 45.0m	12° 53.0'						
*8-9 w F neb													
NGC 2129		GEM	6.7	OC	7.0m	6h 00.7m	23° 19.0'				O	40	
Cl,pL,40 or 50* 8...15 - H VIII 26													

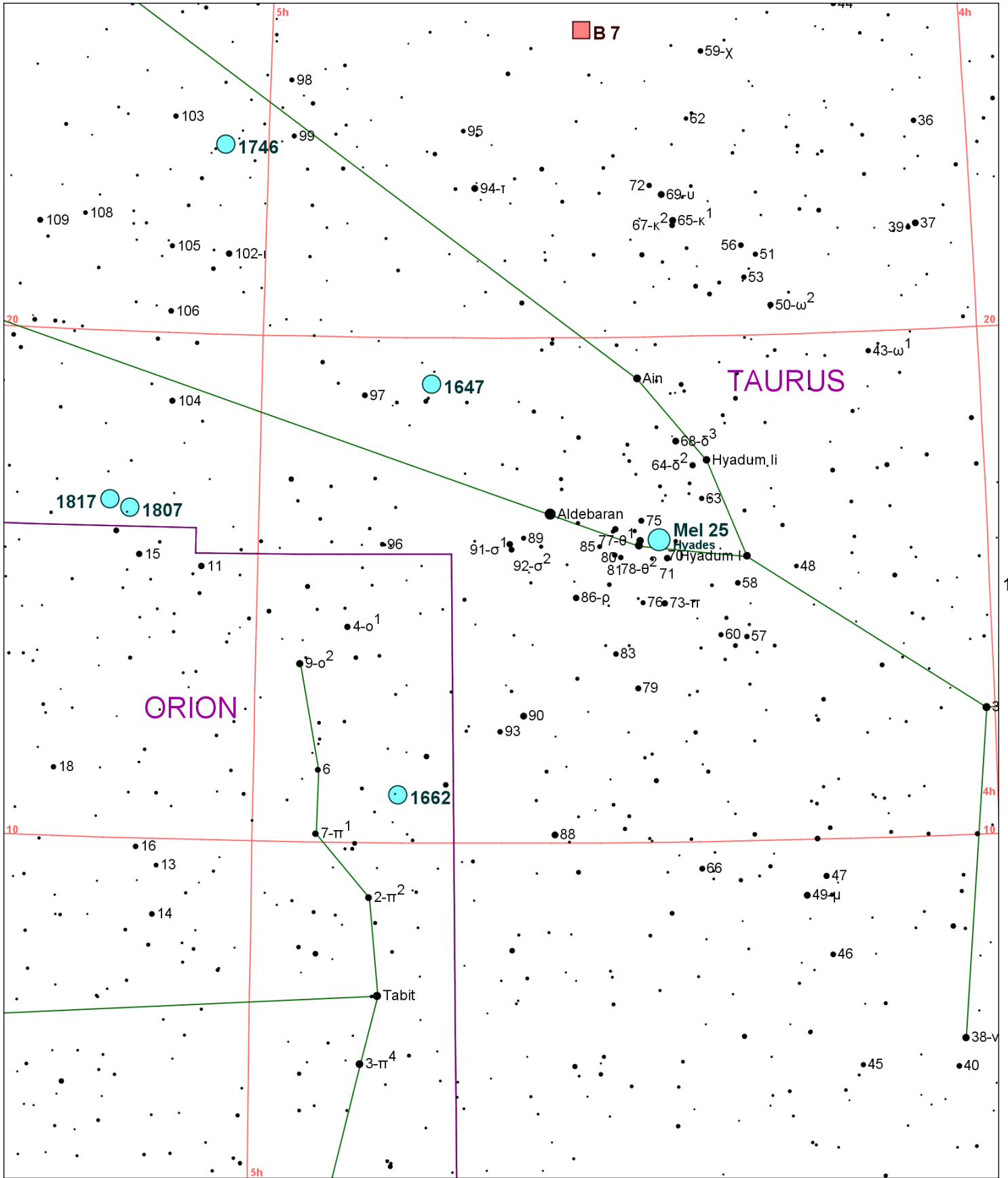


Chart 107

Name	M	Const.	Mag.	Type	Size	R.A.	Decl.	C	R	S	O	# Stars	B
Common					Notes								
B 7		TAU		DN	600m	4h 33.0m	26° 06.0'						
					Narrow lanes E-W;Area contains B22-24 and B208-220								
Mel 25		TAU	0.5	OC	330m	4h 27.0m	16° 00.0'	C41				40	B
					Hyades								
					vvB,vvL,irr - Taurus moving cluster;Aldebaran not a member								
NGC 1647		TAU	6.4	OC	45m	4h 45.9m	19° 06.0'				O	200	B
					Cl,vL,st L,sC - H VIII 8								
NGC 1662		ORI	6.4	OC	20.0m	4h 48.4m	10° 57.0'					35	B
					Cl OF L&S sc st - H VII 1								
NGC 1746		TAU	6.1	OC	42m	5h 03.8m	23° 46.0'				O	20	B
					Cl,P								
NGC 1807		TAU	7.0	OC	17m	5h 10.7m	16° 32.0'				O	20	B
					Cl,pRi,st L & S - 15 * mag 8-9								
NGC 1817		TAU	7.7	OC	16m	5h 12.4m	16° 41.0'				O	60	B
					Cl,L,Ri,IC,st11...14 - H VII 4;50 * mags 10 to 14								

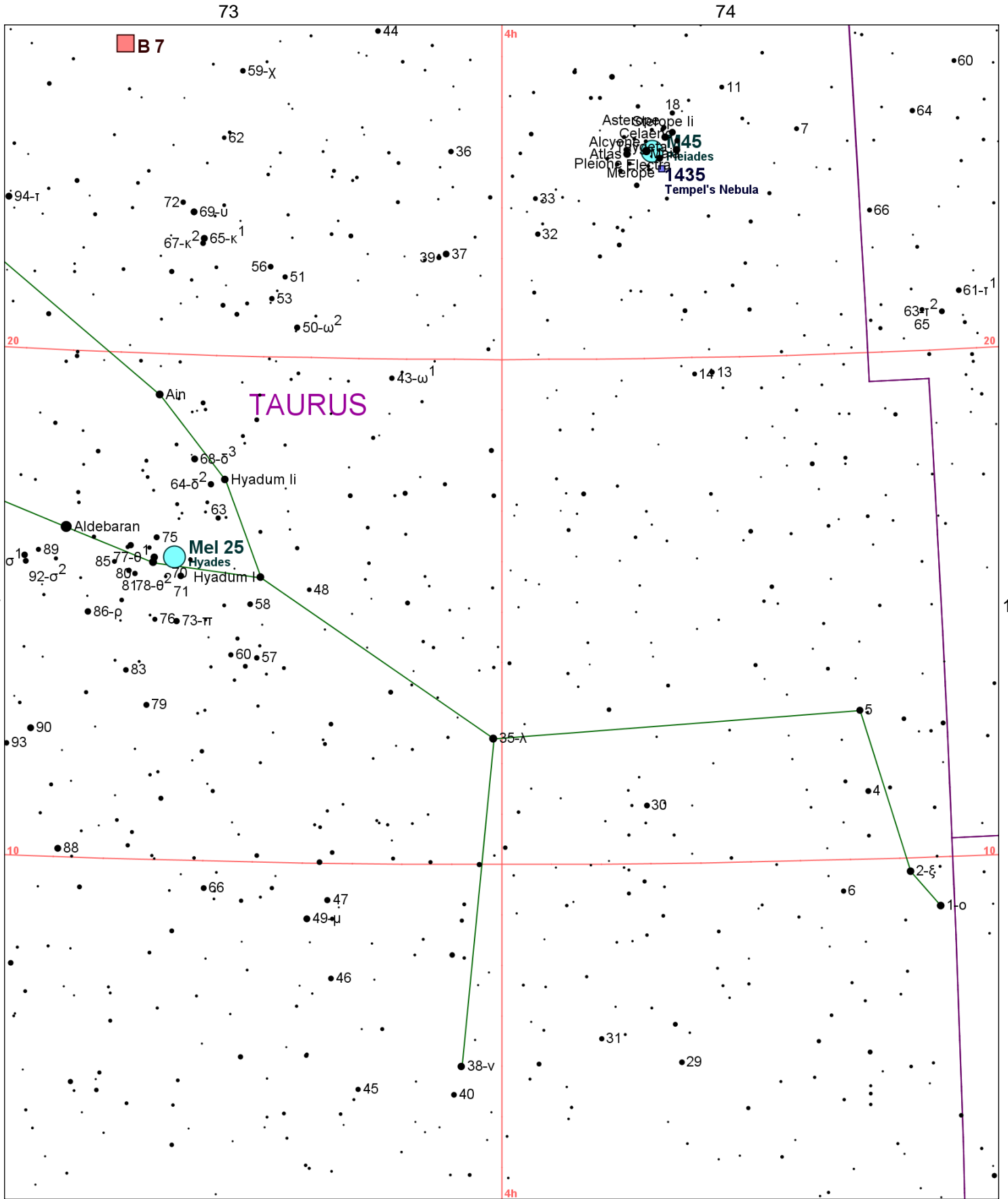


Chart 108													
Name	M	Const.	Mag.	Type	Size	R.A.	Decl.	C	R	S	O	# Stars	B
Common					Notes								
B 7		TAU		DN	600m	4h 33.0m	26° 06.0'						
					Narrow lanes E-W;Area contains B22-24 and B208-220								
Mel 22	M45	TAU	1.2	OC	100m	3h 47.0m	24° 07.0'				O	100	B
Pleiades					vvB,vL,brilliant naked eye cluster,neb inv - aka Subaru; nebus NGC 1432 and 1435 involved								
Mel 25		TAU	0.5	OC	330m	4h 27.0m	16° 00.0'	C41				40	B
Hyades					vvB,vvL,irr - Taurus moving cluster;Aldebaran not a member								
NGC 1435		TAU		DN	30m x 30m	3h 46.2m	23° 46.0'				O		
Tempel's Nebula					vF,vL,diff,(Merope in Pleiades) - fan-shaped								

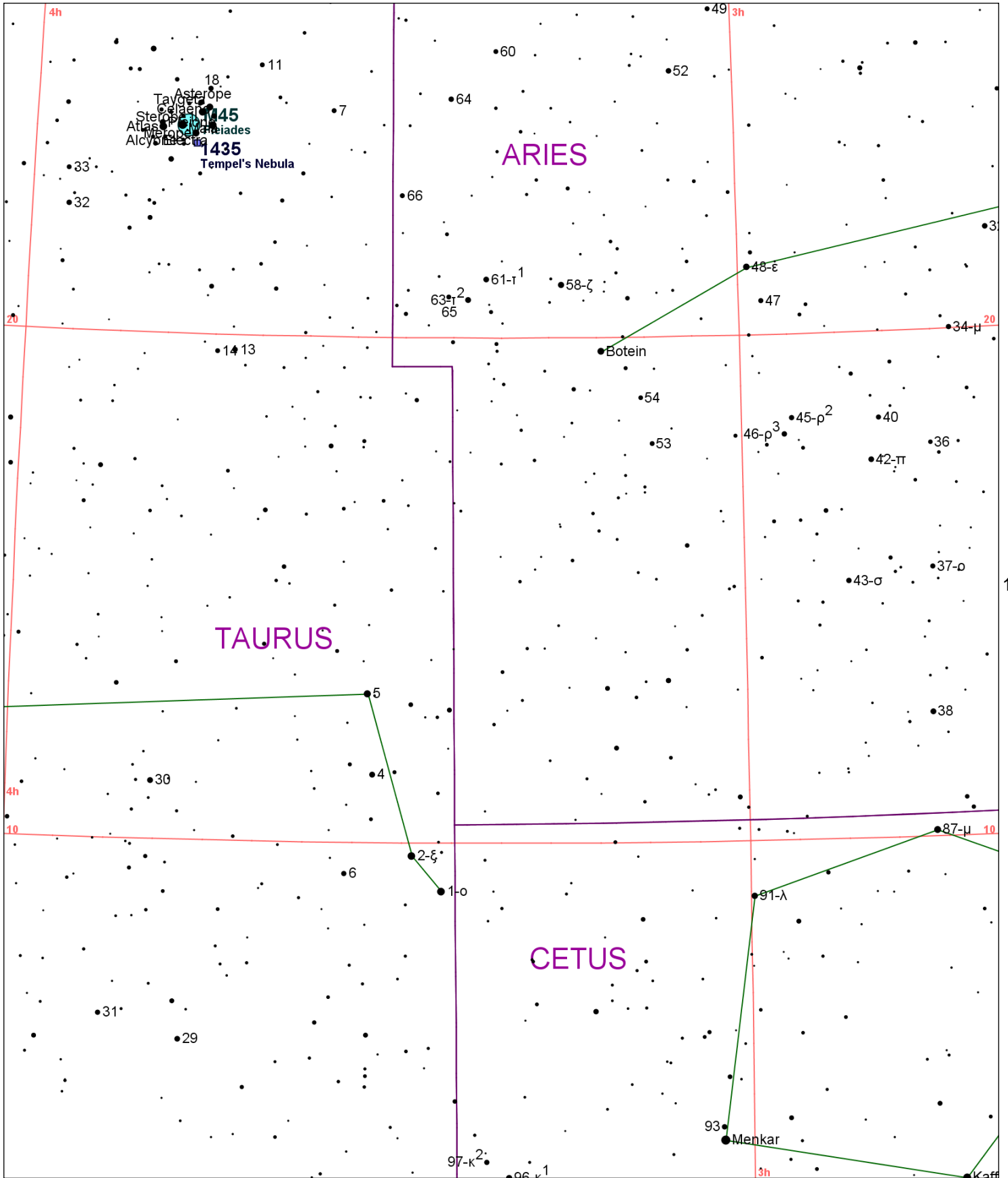


Chart 109

Name	M	Const.	Mag.	Type	Size	R.A.	Decl.	C	R	S	O	# Stars	B
Common					Notes								
Mel 22	M45	TAU	1.2	OC	100m	3h 47.0m	24° 07.0'				O	100	B
Pleiades					vvB,vL,brilliant naked eye cluster,neb inv - aka Subaru; nebus NGC 1432 and 1435 involved								
NGC 1435		TAU		DN	30m x 30m	3h 46.2m	23° 46.0'				O		
Tempel's Nebula					vF,vL,diff,(Merope in Pleiades) - fan-shaped								

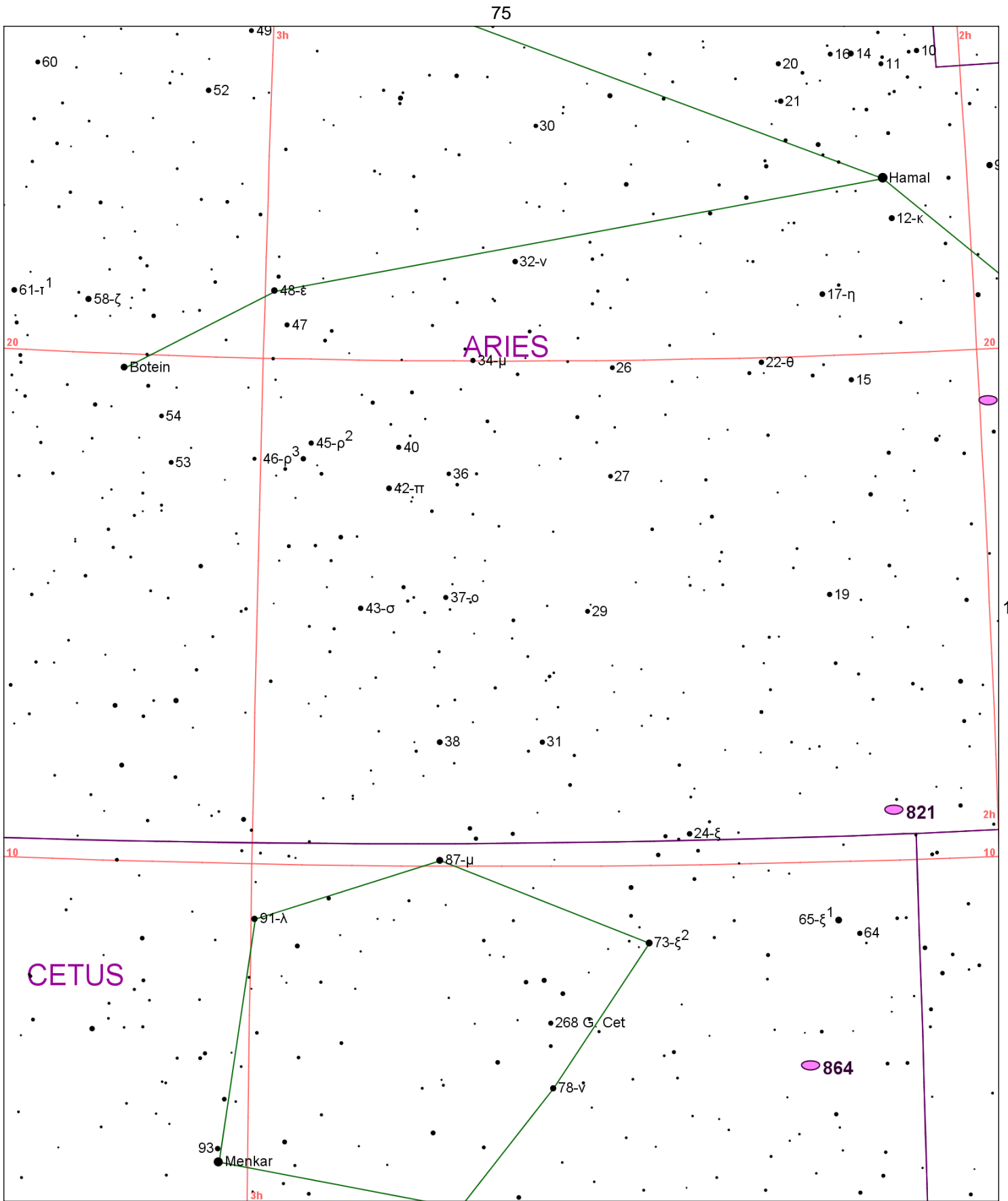


Chart 110

Name	M	Const.	Mag.	Type	Size	R.A.	Decl.	C	R	S	O	# Stars	B
Common					Notes								
NGC 772		ARI	10.3	GAL	7.5m x 4.3m	1h 59.3m	18° 60.0'		R14	S6	O		
					B,cL,R,gbM,r - H I 112;Several tightly coiled arms br on NW side;UGC 1466								
NGC 821		ARI	10.7	GAL	2.4m x 1.7m	2h 08.4m	11° 00.0'						
					pB,vS,vIE,svmbM,* np - H I 152;UGC 1631								
NGC 864		CET	10.9	GAL	4.7m x 3.2m	2h 15.5m	6° 00.0'						
					eF,cL,R,gbM - H III 457;* 12m sf nucl 35"								

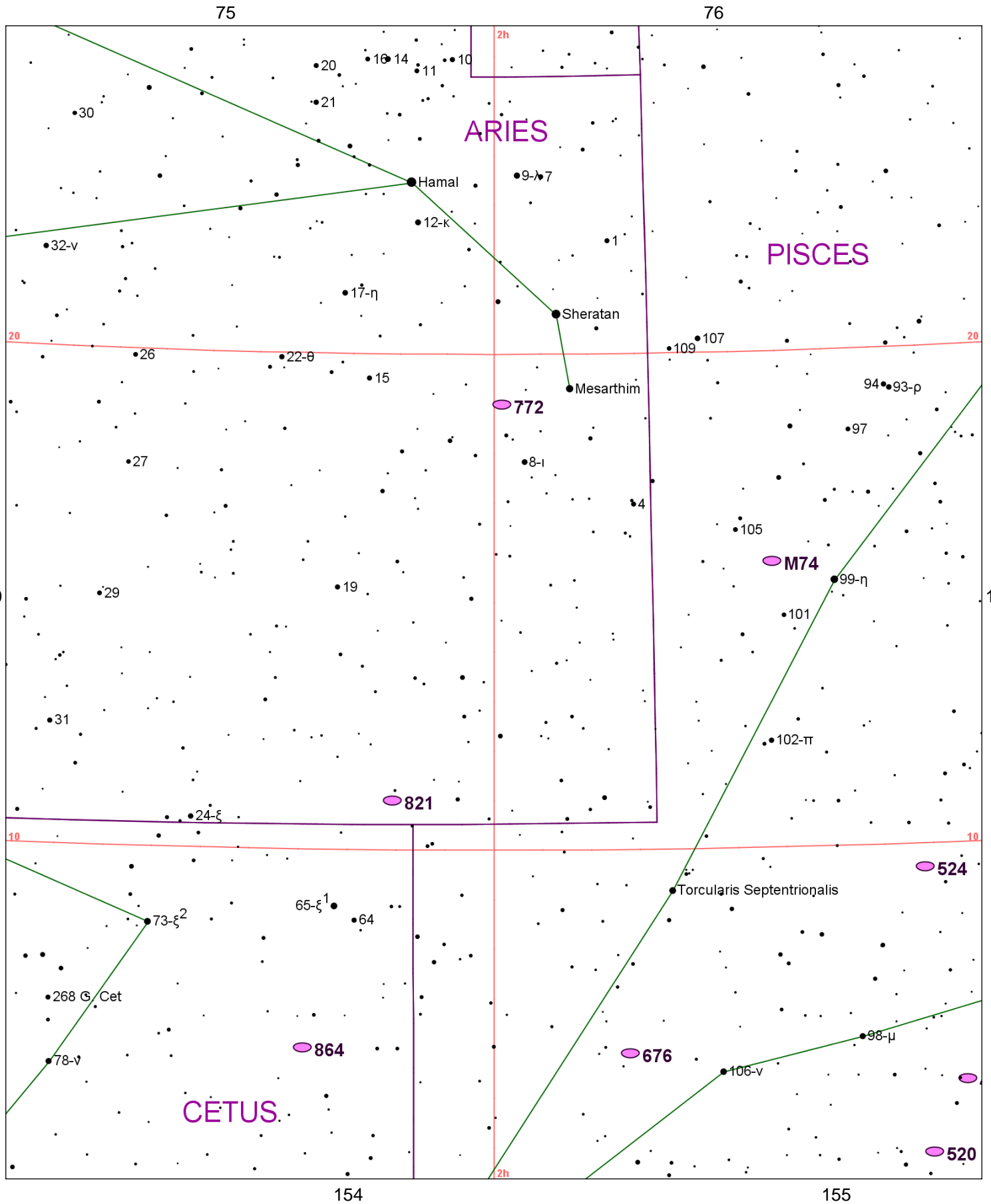


Chart 111

Name	M	Const.	Mag.	Type	Size	R.A.	Decl.	C	R	S	O	# Stars	B
Common					Notes								
NGC 488		PSC	10.3	GAL	5.4m x 3.9m	1h 21.8m	5° 15.0'				O		
					pB,L,R,svmbM,*8F10' - delicate spiral pattern								
NGC 520		PSC	11.4	GAL	3.7m x 1.5m	1h 24.6m	3° 48.0'				O		
					F,cL,E 137 deg - H III 253;Strongly Peculiar;M82 type galaxy;UGC 966								
NGC 524		PSC	10.3	GAL	3.2m x 3.2m	1h 24.8m	9° 32.0'				O		
					vB,pL,mbM,4S* nr - H I 151								
NGC 628	M74	PSC	9.4	GAL	10m x 9.4m	1h 36.7m	15° 47.0'				O		B
					F,vL,R,vq,psmbM,rr - Fine face on spiral								
NGC 676		PSC	10.5	GAL	4.2m x 1.6m	1h 49.0m	5° 54.0'						
					vF,E161,sbM*9 - H IV 42;Brightest in chain including NGC 693;NGC 706								
NGC 772		ARI	10.3	GAL	7.5m x 4.3m	1h 59.3m	18° 60.0'		R14	S6	O		
					B,cL,R,gbM,r - H I 112;Several tightly coiled arms br on NW side;UGC 1466								
NGC 821		ARI	10.7	GAL	2.4m x 1.7m	2h 08.4m	11° 00.0'						
					pB,vS,vIE,svmbM,* np - H I 152;UGC 1631								
NGC 864		CET	10.9	GAL	4.7m x 3.2m	2h 15.5m	6° 00.0'						
					eF,cL,R,gbM - H III 457;* 12m sf nucl 35"								

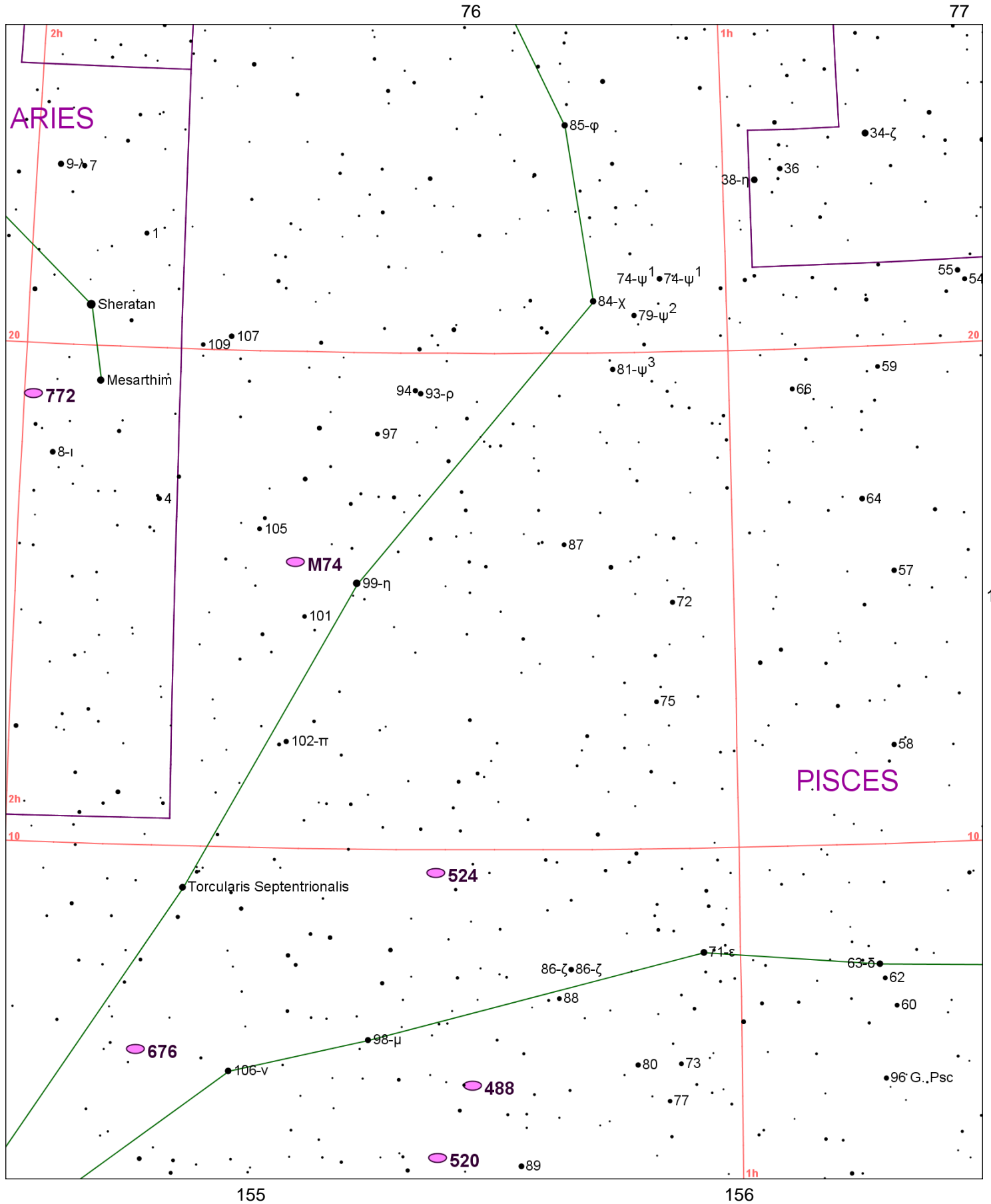


Chart 112

Name	M	Const.	Mag.	Type	Size	R.A.	Decl.	C	R	S	O	# Stars	B
Common					Notes								
NGC 488		PSC	10.3	GAL	5.4m x 3.9m	1h 21.8m	5° 15.0'				O		
					pB,L,R,svmbM,*8F10' - delicate spiral pattern								
NGC 520		PSC	11.4	GAL	3.7m x 1.5m	1h 24.6m	3° 48.0'				O		
					F,cL,E 137 deg - H III 253;Strongly Peculiar;M82 type galaxy;UGC 966								
NGC 524		PSC	10.3	GAL	3.2m x 3.2m	1h 24.8m	9° 32.0'				O		
					vB,pL,mbM,4S* nr - H I 151								
NGC 628	M74	PSC	9.4	GAL	10m x 9.4m	1h 36.7m	15° 47.0'				O		B
					F,vL,R,vq,psmbM,rr - Fine face on spiral								
NGC 676		PSC	10.5	GAL	4.2m x 1.6m	1h 49.0m	5° 54.0'						
					vF,E161,sbM*9 - H IV 42;Brightest in chain including NGC 693;NGC 706								
NGC 772		ARI	10.3	GAL	7.5m x 4.3m	1h 59.3m	18° 60.0'		R14	S6	O		
					B,cL,R,gbM,r - H I 112;Several tightly coiled arms br on NW side;UGC 1466								