

66

67

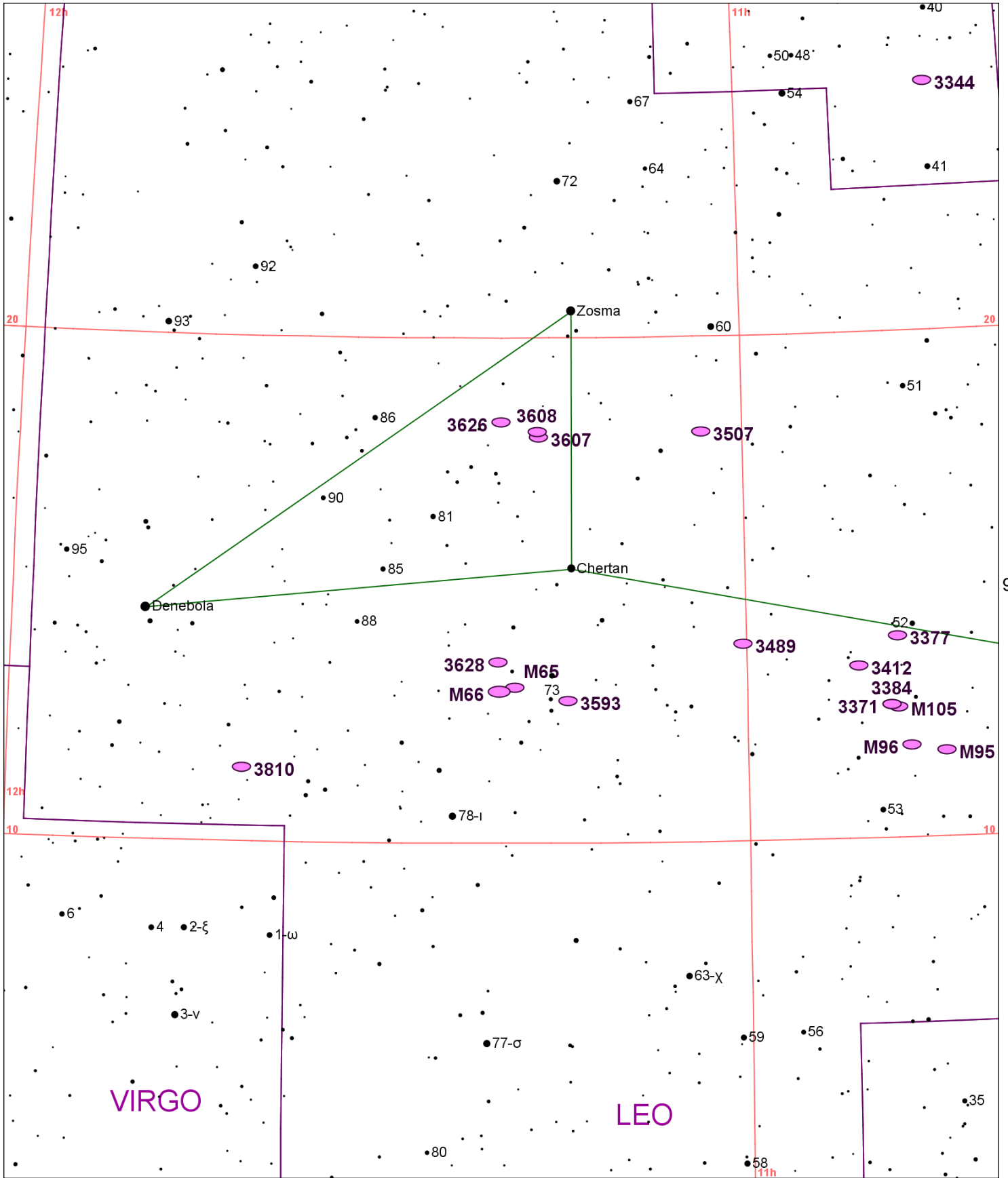


Chart 97													
Name	M	Const.	Mag.	Type	Size	R.A.	Decl.	C	R	S	O	# Stars	B
<b>Common</b>					<b>Notes</b>								
NGC 3344		LMI	9.9	GAL	7.1m x 6.8m	10h 43.5m	24° 55.0'		R52	S65	O		
					cB,L,gbM,* inv,2 st f - H I 81								
NGC 3351	M95	LEO	9.7	GAL	7.3m x 4.4m	10h 44.0m	11° 42.0'				O		
					B,L,R,pgmbMN - Leo group								
NGC 3368	M96	LEO	9.3	GAL	7.8m x 5.2m	10h 46.8m	11° 49.0'				O		B
					vB,vL,IE,vsmbM,r - comp @ 3.8';PA 205								
NGC 3371		LEO	10.9	GAL	5.4m x 2.7m	10h 48.3m	12° 38.0'						
					eF,R,2nf of 3								
NGC 3377		LEO	10.4	GAL	4.3m x 2.6m	10h 47.7m	13° 59.0'				O		
					vB,cL,IE,svmbMBN - H II 99;Leo group								
NGC 3379	M105	LEO	9.3	GAL	5.3m x 4.8m	10h 47.8m	12° 35.0'				O		
					vB,cL,R,psbM,r - H I 17;P w NGC 3384 @ 7.2';NGC 3389 @ 10.0';PA108;Leo Group								
NGC 3384		LEO	9.9	GAL	5.4m x 2.7m	10h 48.3m	12° 38.0'		R55	S61	O		
					vB,L,R,psmbM,2nd of 3 - H I 18;Leo group;in triple group w NGC 3379 and NGC 3389								
NGC 3412		LEO	10.5	GAL	3.7m x 2.2m	10h 50.9m	13° 25.0'				O		
					B,S,IE 135,smbMN - H I 27;Leo group								
NGC 3489		LEO	10.3	GAL	3.6m x 2.2m	11h 00.3m	13° 54.0'				O		
					vB,pL,IE 80,smbMN - H II 101;Leo group								
NGC 3507		LEO	10.9	GAL	3.4m x 2.9m	11h 03.4m	18° 08.0'						
					cF,pL,R,sbMS *,*9 att 25 - H IV 7;P w NGC 3501								
NGC 3593		LEO	10.9	GAL	4.9m x 2.1m	11h 14.6m	12° 49.0'				O		
					B,cL,E 90,psmbM - H I 29;in NGC 3607 group;BN w L bulge and dk lane								
NGC 3607		LEO	9.9	GAL	4.6m x 4m	11h 16.9m	18° 03.0'		R57	S63	O		
					vB,L,R,vmbM,2nd of 3 - H II 50;brightest in group;P w NGC 3608 at 6.2';PA10								
NGC 3608		LEO	10.8	GAL	3.5m x 3m	11h 17.0m	18° 09.0'						
					B,pL,R,psbM,3rd of 3 - H II 51;NGC 3607 group;comp 5.9';PA251;0.8'X0.3'								
NGC 3623	M65	LEO	9.3	GAL	9m x 2.3m	11h 18.9m	13° 05.0'				O		B
					B,vL,mE 165,gbMBN - M66 subgroup								
NGC 3626		LEO	11.0	GAL	3.2m x 2.4m	11h 20.1m	18° 21.0'	C40					
					B,S,vIE,sbM - H II 52;Indense part of clust;nearest comp 2' PA73 .5'X0.4'								
NGC 3627	M66	LEO	8.9	GAL	9.1m x 4.1m	11h 20.2m	13° 00.0'				O		B
					B,vL,mE 150,mbM,2 st np - brightest in group;M 65 & NGC 3628 in field								
NGC 3628		LEO	9.5	GAL	13.1m x 3.1m	11h 20.3m	13° 35.0'		R58	S64	O		
					pB,vL,vmE 102 - H V 8;Leo group;disturbed								
NGC 3810		LEO	10.8	GAL	4.1m x 2.7m	11h 41.0m	11° 28.0'				O		
					B,L,vIE - H I 21								

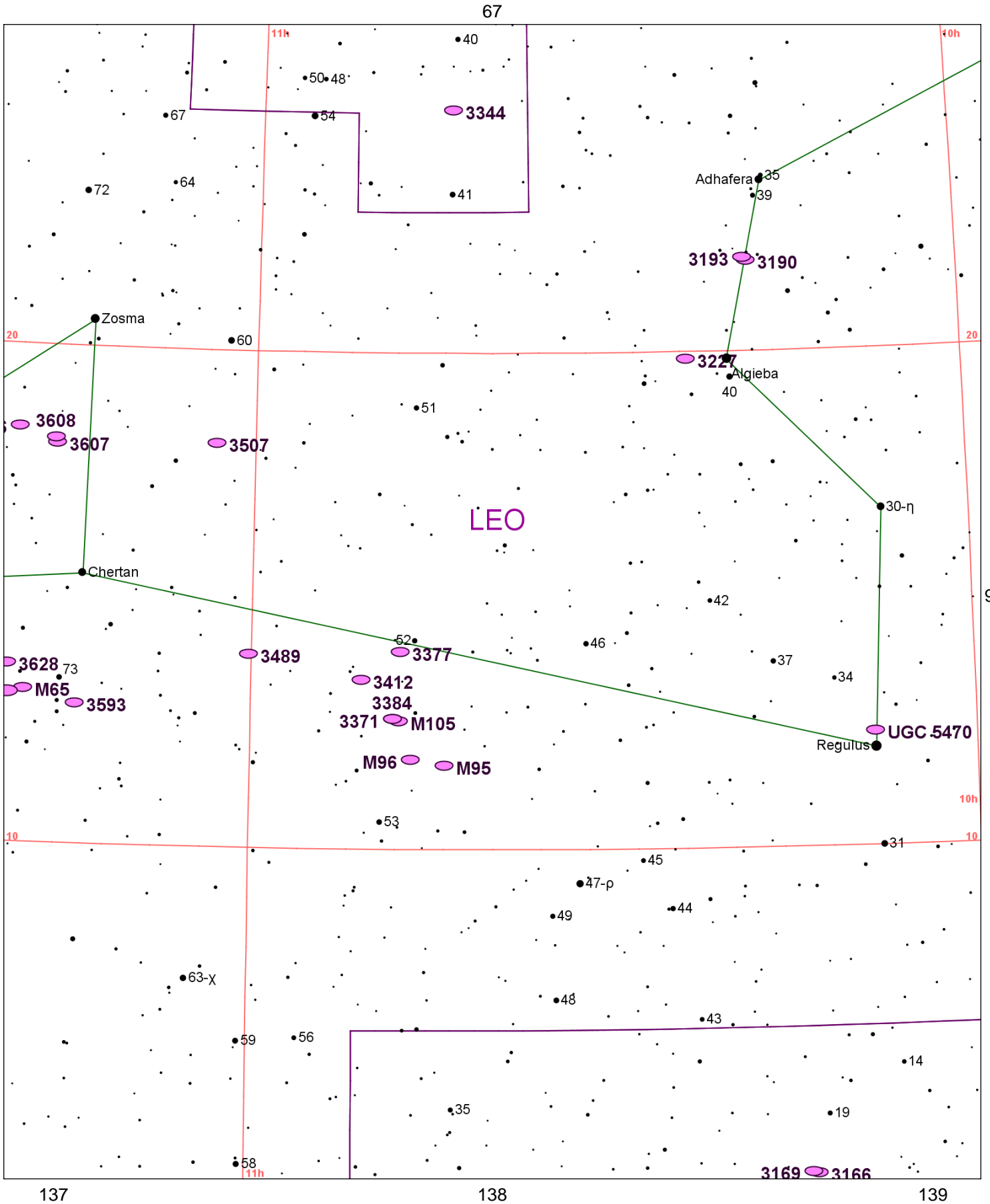
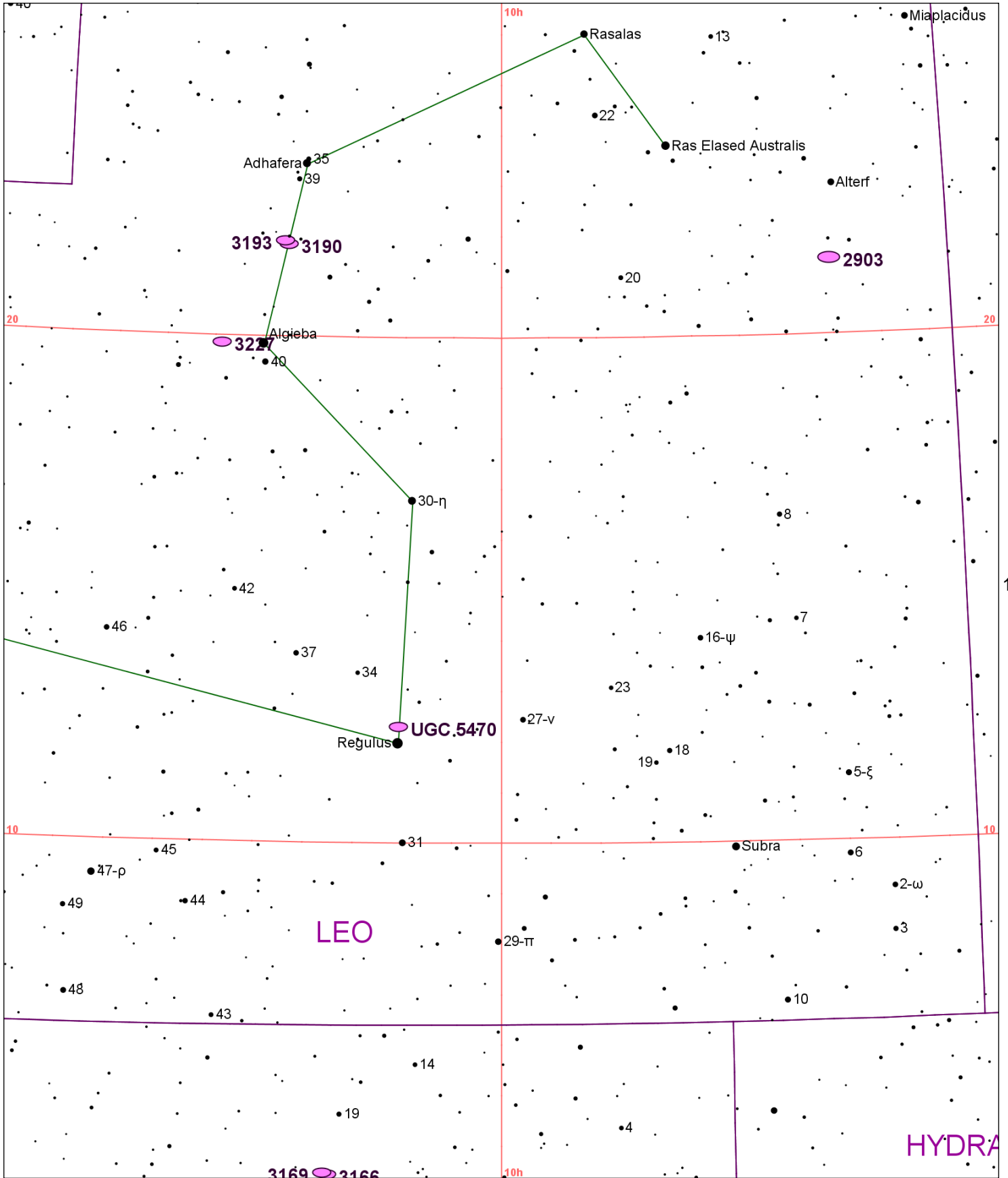


Chart 98													
Name	M	Const.	Mag.	Type	Size	R.A.	Decl.	C	R	S	O	# Stars	B
<b>Common</b>					<b>Notes</b>								
NGC 3166		SEX	10.4	GAL	4.8m x 1.9m	10h 13.8m	3° 26.0'				O		
					B,pS,R,psmbM,2nd of 3 - H I 3;brightest in group								
NGC 3169		SEX	10.2	GAL	4.2m x 2.9m	10h 14.2m	3° 28.0'				O		
					B,pL,vIE,pgmbM,*11,78,80",3rd of 3 - H I 4;eF corona vis to approx 8X6;P w NGC 3166								
NGC 3190		LEO	11.1	GAL	4m x 1.5m	10h 18.1m	21° 50.0'				O		
					B,pS,E,psbMN - H II 44;bright in grp;disturbed edge-on spiral;P w NGC 3187								
NGC 3193		LEO	10.9	GAL	2.9m x 2.8m	10h 18.4m	21° 54.0'						
					B,S,vIE,pslbM,*9.5,354,80" - H II 45;NGC 3189-90 group;vB center in smooth nebula								
NGC 3227		LEO	10.3	GAL	6.6m x 5m	10h 23.5m	19° 52.0'				O		
					pB,cL,R,D - H II 29;P w NGC 3226;vF env surr system;50' E of Gamma Leo								
NGC 3344		LMI	9.9	GAL	7.1m x 6.8m	10h 43.5m	24° 55.0'		R52	S65	O		
					cB,L,gbM,* inv,2 st f - H I 81								
NGC 3351	M95	LEO	9.7	GAL	7.3m x 4.4m	10h 44.0m	11° 42.0'				O		
					B,L,R,pgmbMN - Leo group								
NGC 3368	M96	LEO	9.3	GAL	7.8m x 5.2m	10h 46.8m	11° 49.0'				O		B
					vB,vL,IE,svsmbM,r - comp @ 3.8';PA 205								
NGC 3371		LEO	10.9	GAL	5.4m x 2.7m	10h 48.3m	12° 38.0'						
					eF,R,2nf of 3								
NGC 3377		LEO	10.4	GAL	4.3m x 2.6m	10h 47.7m	13° 59.0'				O		
					vB,cL,IE,svmbMBN - H II 99;Leo group								
NGC 3379	M105	LEO	9.3	GAL	5.3m x 4.8m	10h 47.8m	12° 35.0'				O		
					vB,cL,R,psbM,r - H I 17;P w NGC 3384 @ 7.2';NGC 3389 @ 10.0';PA108;Leo Group								
NGC 3384		LEO	9.9	GAL	5.4m x 2.7m	10h 48.3m	12° 38.0'		R55	S61	O		
					vB,L,R,psmbM,2nd of 3 - H I 18;Leo group;in triple group w NGC 3379 and NGC 3389								
NGC 3412		LEO	10.5	GAL	3.7m x 2.2m	10h 50.9m	13° 25.0'				O		
					B,S,IE 135,smbMN - H I 27;Leo group								
NGC 3489		LEO	10.3	GAL	3.6m x 2.2m	11h 00.3m	13° 54.0'				O		
					vB,pL,IE 80,smbMN - H II 101;Leo group								
NGC 3507		LEO	10.9	GAL	3.4m x 2.9m	11h 03.4m	18° 08.0'						
					cF,pL,R,sbMS *,*9 att 25 - H IV 7;P w NGC 3501								
NGC 3593		LEO	10.9	GAL	4.9m x 2.1m	11h 14.6m	12° 49.0'				O		
					B,cL,E 90,psmbM - H I 29;in NGC 3607 group;BN w L bulge and dk lane								
NGC 3607		LEO	9.9	GAL	4.6m x 4m	11h 16.9m	18° 03.0'		R57	S63	O		
					vB,L,R,vmbM,2nd of 3 - H II 50;brightest in group;P w NGC 3608 at 6.2';PA10								
NGC 3608		LEO	10.8	GAL	3.5m x 3m	11h 17.0m	18° 09.0'						
					B,pL,R,psbM,3rd of 3 - H II 51;NGC 3607 group;comp 5.9';PA251;0.8'X0.3'								
NGC 3623	M65	LEO	9.3	GAL	9m x 2.3m	11h 18.9m	13° 05.0'				O		B
					B,vL,mE 165,gbMBN - M66 subgroup								
NGC 3626		LEO	11.0	GAL	3.2m x 2.4m	11h 20.1m	18° 21.0'	C40					
					B,S,vIE,sbM - H II 52;Indense part of clust;nearest comp 2' PA73 .5'X0.4'								
NGC 3627	M66	LEO	8.9	GAL	9.1m x 4.1m	11h 20.2m	13° 00.0'				O		B
					B,vL,mE 150,mbM,2 st np - brightest in group;M 65 & NGC 3628 in field								
NGC 3628		LEO	9.5	GAL	13.1m x 3.1m	11h 20.3m	13° 35.0'		R58	S64	O		
					pB,vL,vmE 102 - H V 8;Leo group;disturbed								
UGC 5470		LEO	10.2	GAL	10.7m x 8.3m	10h 08.4m	12° 18.0'						
					dwarf elliptical in Local Group;0.3' N of Regulus								

67

68



98

100

LEO

HYDRA

3169 3166

139

140

Chart 99													
Name	M	Const.	Mag.	Type	Size	R.A.	Decl.	C	R	S	O	# Stars	B
<b>Common</b>					<b>Notes</b>								
NGC 2903		LEO	9.0	GAL	12m x 5.6m	9h 32.2m	21° 30.0'		R54	S60	O		
					cB,vL,E,gmbM,r,sp of 2 - H I 56;short B nucleus bar;fine multi arm spiral								
NGC 3166		SEX	10.4	GAL	4.8m x 1.9m	10h 13.8m	3° 26.0'				O		
					B,pS,R,psmbM,2nd of 3 - H I 3;brightest in group								
NGC 3169		SEX	10.2	GAL	4.2m x 2.9m	10h 14.2m	3° 28.0'				O		
					B,pL,vIE,pgmbM,*11,78,80",3rd of 3 - H I 4;eF corona vis to approx 8X6;P w NGC 3166								
NGC 3190		LEO	11.1	GAL	4m x 1.5m	10h 18.1m	21° 50.0'				O		
					B,pS,E,psbMN - H II 44;bright in grp;disturbed edge-on spiral;P w NGC 3187								
NGC 3193		LEO	10.9	GAL	2.9m x 2.8m	10h 18.4m	21° 54.0'						
					B,S,vIE,pslbM,*9.5,354,80" - H II 45;NGC 3189-90 group;vB center in smooth nebula								
NGC 3227		LEO	10.3	GAL	6.6m x 5m	10h 23.5m	19° 52.0'				O		
					pB,cL,R,D - H II 29;P w NGC 3226;vF env surr system;50' E of Gamma Leo								
UGC 5470		LEO	10.2	GAL	10.7m x 8.3m	10h 08.4m	12° 18.0'						
					dwarf elliptical in Local Group;0.3' N of Regulus								

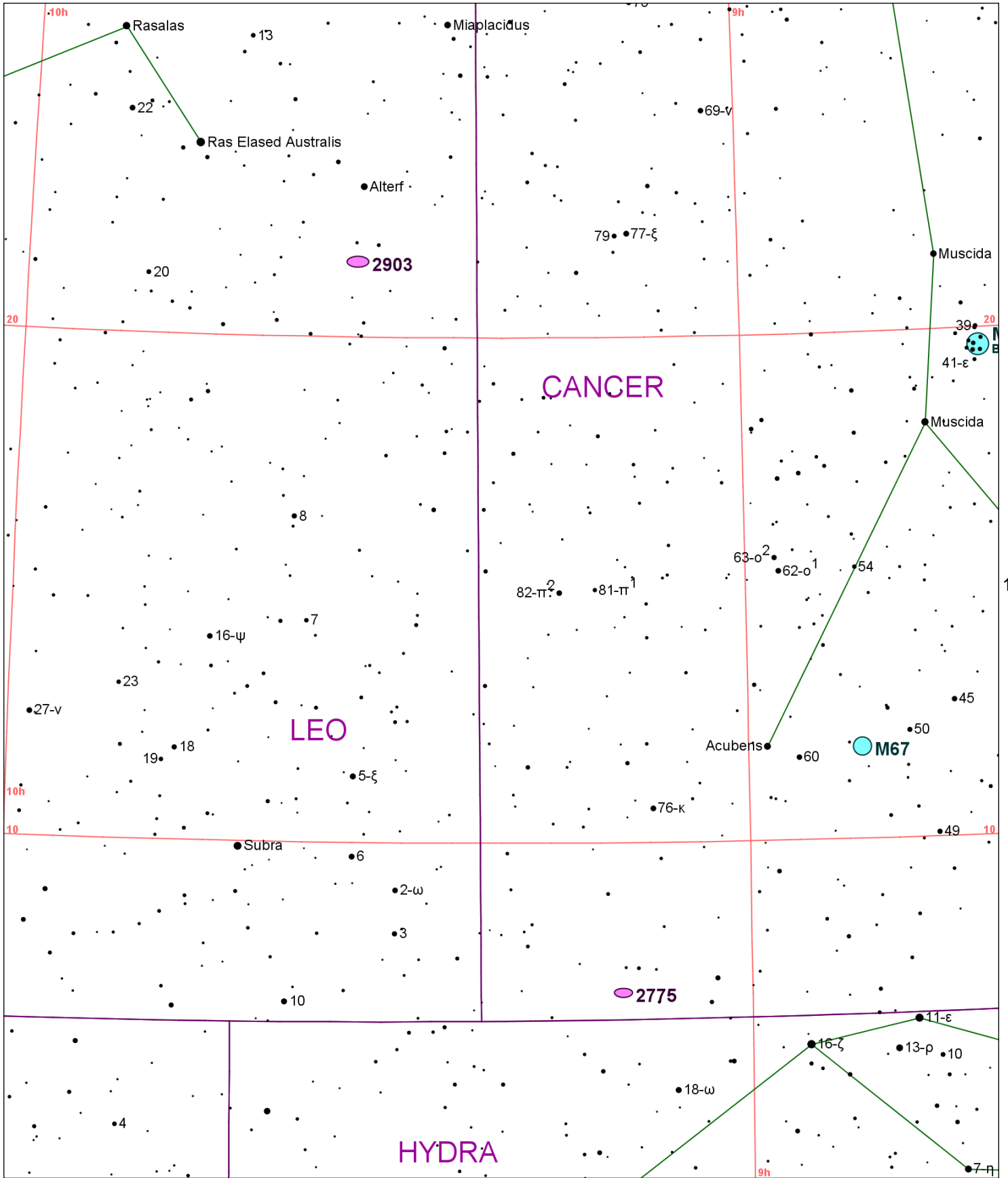
100

R.A. 9h 20' Decl. 15.0°

100

68

69



100

Deep Sky Surfing

100

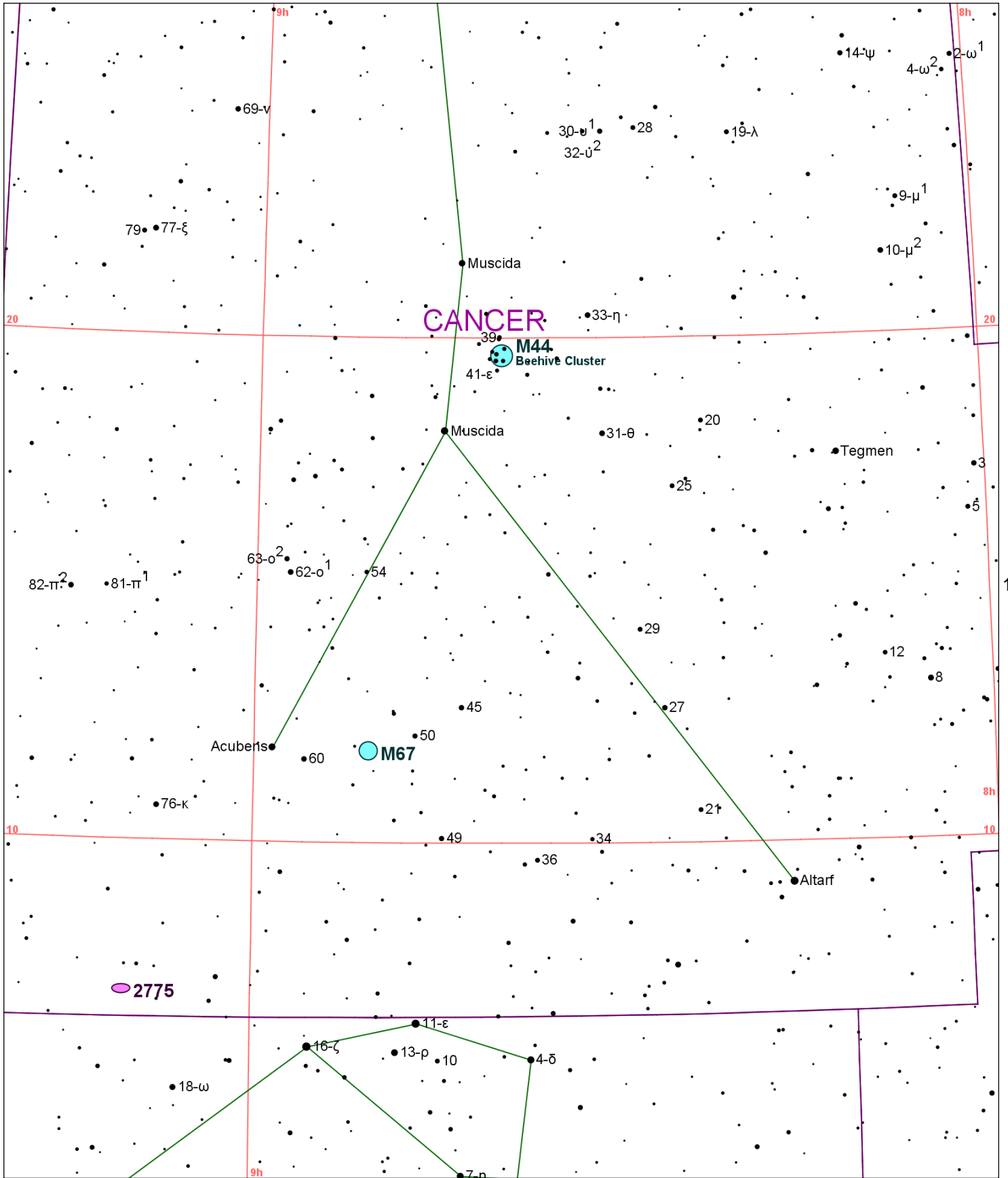
140

141

Chart 100													
Name	M	Const.	Mag.	Type	Size	R.A.	Decl.	C	R	S	O	# Stars	B
<b>Common</b>					<b>Notes</b>								
NGC 2632	M44	CNC	3.1	OC	95m	8h 40.0m	19° 40.0'				O	50	B
Beehive Cluster					!! - aka Praesepe; 200 memb to 14 mag								
NGC 2682	M67	CNC	6.9	OC	30m	8h 50.8m	11° 49.0'				O	200	B
					! Cl,vB,vL,eRi,IC,*10...15 - 500 memb to 16 mag;Mallas-dark spot near center								
NGC 2775		CNC	10.1	GAL	4.5m x 3.6m	9h 10.3m	7° 02.0'	C48			O		
					cB,cL,R,vgvsmB,r - H I 2;N in B smooth lens;many knotty arms form dk lane								
NGC 2903		LEO	9.0	GAL	12m x 5.6m	9h 32.2m	21° 30.0'		R54	S60	O		
					cB,vL,E,gmbM,r,sp of 2 - H I 56;short B nucleus bar;fine multi arm spiral								



69



100

102

2775

141

142

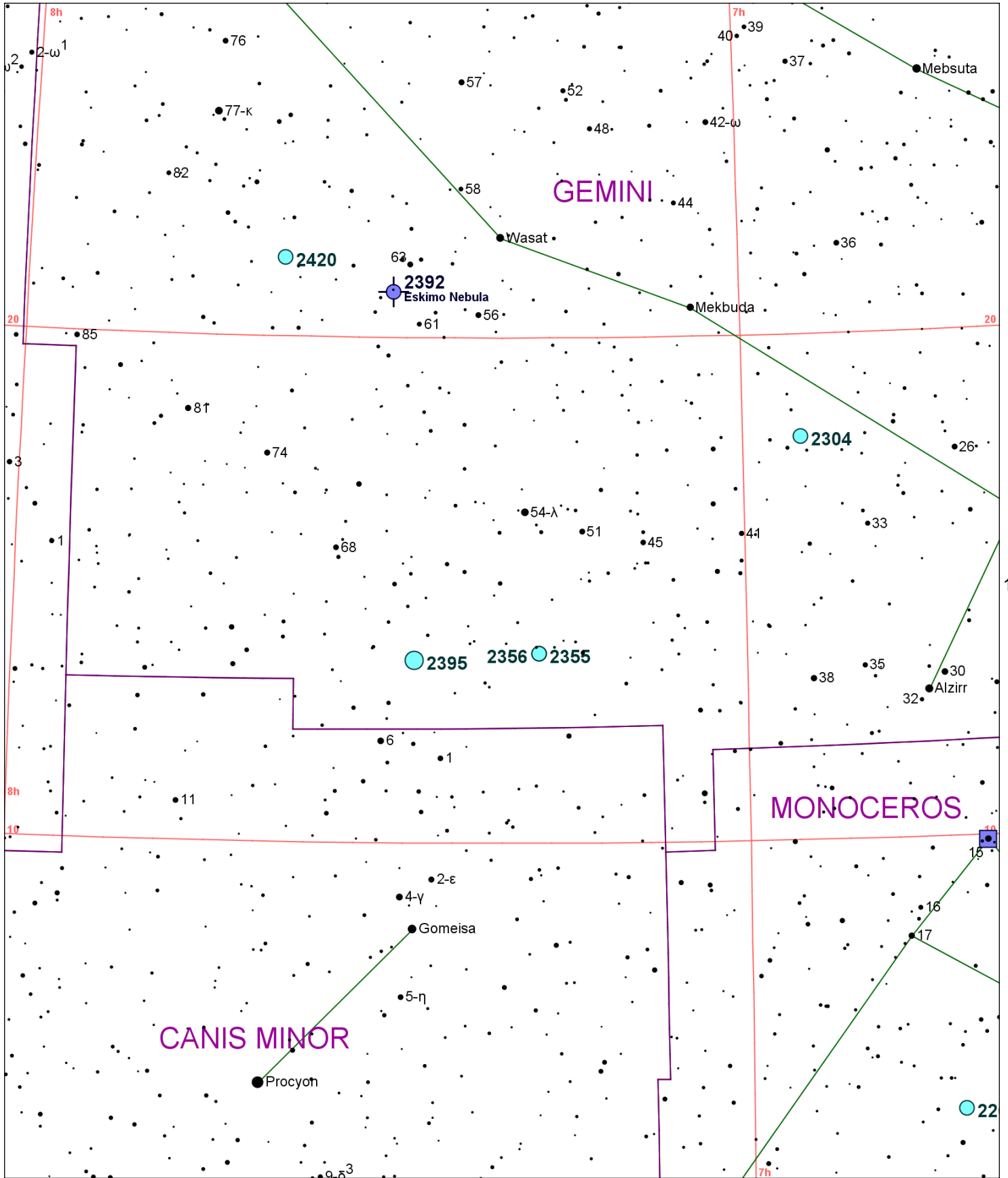
Chart 101													
Name	M	Const.	Mag.	Type	Size	R.A.	Decl.	C	R	S	O	# Stars	B
<b>Common</b>					<b>Notes</b>								
NGC 2632	M44	CNC	3.1	OC	95m	8h 40.0m	19° 40.0'				O	50	B
Beehive Cluster					!! - aka Praesepe; 200 memb to 14 mag								
NGC 2682	M67	CNC	6.9	OC	30m	8h 50.8m	11° 49.0'				O	200	B
					! Cl,vB,vL,eRi,IC,*10...15 - 500 memb to 16 mag;Mallas-dark spot near center								
NGC 2775		CNC	10.1	GAL	4.5m x 3.6m	9h 10.3m	7° 02.0'	C48			O		
					cB,cL,R,vgvsmB,r - H I 2;N in B smooth lens;many knotty arms form dk lane								



Chart 102													
Name	M	Const.	Mag.	Type	Size	R.A.	Decl.	C	R	S	O	# Stars	B
<b>Common</b>					<b>Notes</b>								
NGC 2392		GEM	8.6	PN	47s x 43s	7h 29.2m	20° 55.0'	C39	R31	S54	O		B
Eskimo Nebula					B,S,R,*9M,*8 nf 100" - aka Clown Face Nebula; H IV 45;PK197+17.1;sev shells								
NGC 2395		GEM	8.0	OC	12.0m	7h 27.2m	13° 37.0'					30	
					Cl,pRi,C - H VIII 11								
NGC 2420		GEM	8.3	OC	10.0m	7h 38.4m	21° 34.0'				O	100	
					Cl,cL,Ri,C,st 11...18 - H VI 1								
NGC 2632	M44	CNC	3.1	OC	95m	8h 40.0m	19° 40.0'				O	50	B
Beehive Cluster					!! - aka Praesepe; 200 memb to 14 mag								

70

71



102

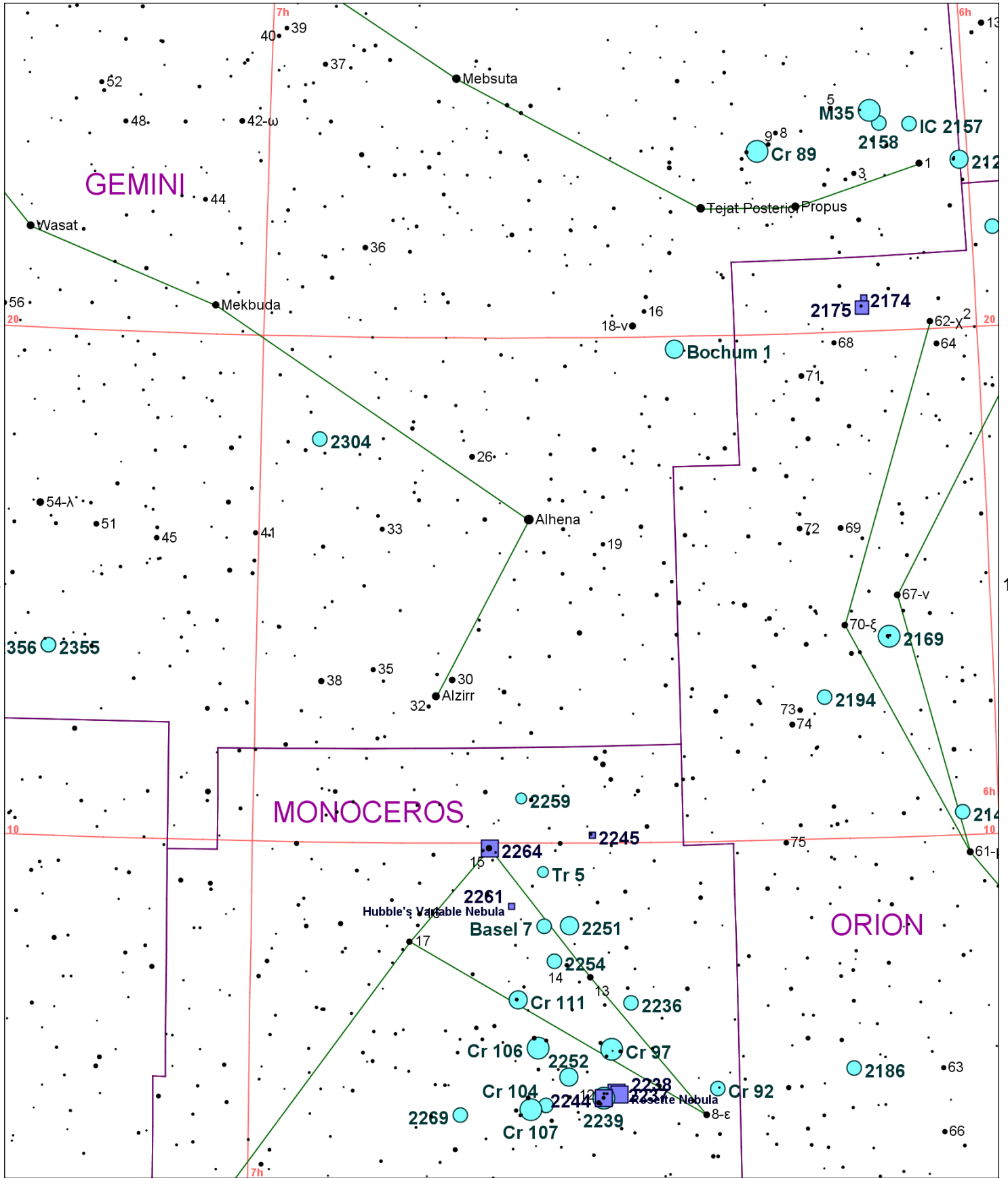
104

144

145

Chart 103													
Name	M	Const.	Mag.	Type	Size	R.A.	Decl.	C	R	S	O	# Stars	B
<b>Common</b>					<b>Notes</b>								
NGC 2264		MON	3.9	DN	20.0m	6h 41.0m	9° 54.0'				O	40	B
					eL neb,3 deg diam,densest 12' sp 15 MON - H V 27=H VIII 5; 20 * mags 6...10 w neby; Near Cone nebula								
NGC 2269		MON	10.0	OC	4.0m	6h 43.3m	4° 37.0'					12	
					Cl,vmC,not Ri,st vS - H VI 3								
NGC 2304		GEM	10.0	OC	5.0m	6h 55.2m	17° 59.0'					30	
					Cl,pL,Ri,mC,st vS - H VI 2								
NGC 2355		GEM	9.7	OC	9.0m	7h 17.0m	13° 45.0'					40	
					Cl,pS,pRi,mC,*15..16 - H VI 6								
NGC 2356		GEM	9.7	OC	9m	7h 17.0m	13° 45.0'						
					Cl,IC - H VII 6								
NGC 2392		GEM	8.6	PN	47s x 43s	7h 29.2m	20° 55.0'	C39	R31	S54	O		B
Eskimo Nebula					B,S,R,*9M,*8 nf 100" - aka Clown Face Nebula; H IV 45;PK197+17.1;sev shells								
NGC 2395		GEM	8.0	OC	12.0m	7h 27.2m	13° 37.0'					30	
					Cl,pRi,C - H VIII 11								
NGC 2420		GEM	8.3	OC	10.0m	7h 38.4m	21° 34.0'				O	100	
					Cl,cL,Ri,C,st 11...18 - H VI 1								

71



GEMINI

MONOCEROS

ORION

103

105

145

146

Chart 104													
Name	M	Const.	Mag.	Type	Size	R.A.	Decl.	C	R	S	O	# Stars	B
<b>Common</b>					<b>Notes</b>								
Basel 7		MON	8.5	OC		6h 36.6m	8° 21.0'					15	
Basel 11B		ORI	8.9	OC	10.0m	5h 58.2m	21° 58.0'					12	
Bochum 1		GEM	7.9	OC		6h 25.5m	19° 46.0'						
Cr 89		GEM	5.7	OC	35.0m	6h 18.0m	23° 38.0'					15	
Cr 92		MON	8.5	OC	11.0m	6h 22.9m	5° 07.0'						
Cr 97		MON	5.4	OC	21.0m	6h 31.3m	5° 55.0'					15	
Cr 104		MON	9.6	OC	22.0m	6h 36.5m	4° 49.0'					15	
Cr 106		MON	4.6	OC	45.0m	6h 37.1m	5° 57.0'					20	
Cr 107		MON	5.1	OC	35.0m	6h 37.7m	4° 44.0'					15	
Cr 111		MON	7.0	OC	3.2m	6h 38.7m	6° 54.0'						
IC 2157		GEM	8.4	OC	7.0m	6h 04.8m	24° 04.0'					20	
					Cl,S,about 20 F stars								
NGC 2129		GEM	6.7	OC	7.0m	6h 00.7m	23° 19.0'				O	40	
					Cl,pL,40 or 50* 8...15 - H VIII 26								
NGC 2141		ORI	9.4	OC	10.0m	6h 02.9m	10° 27.0'					10	
					F,pS,dif								
NGC 2158		GEM	8.6	OC	5.0m	6h 07.4m	24° 06.0'			S53	O		
					Cl,pS,mC,vRi,irr triangle * eS - H VI 17;150 F* on edge of M 35								
NGC 2168	M35	GEM	5.1	OC	28.0m	6h 08.2m	24° 22.0'				O	200	B
					Cl,vL,eRi,pC,st9...16 - Lord Rosse counted 300*;Orange * invl;NGC 2158 30' SW								
NGC 2169		ORI	5.9	OC	7.0m	6h 08.4m	13° 58.0'					30	B
					Cl,S,IRi,pmC,** (ADS 4728) - H VIII 24;In nebula Ced 78								
NGC 2174		ORI		DN	40m x 30m	6h 09.4m	20° 40.0'				O		
					eF,bet 3 vF * - w IC 2159 sf; contains cluster								
NGC 2175		ORI	6.8	DN	18.0m	6h 09.6m	20° 29.0'					60	
					*8 in neb - In Gem OB1?								
NGC 2186		ORI	8.7	OC	4.0m	6h 12.1m	5° 28.0'					30	
					Cl,pL,pRi,pC,st L and S - H VII 25								
NGC 2194		ORI	8.5	OC	10.0m	6h 13.8m	12° 48.0'		R29	S77	O	80	
					Cl,L,Ri,gvmCM - H VI 5;faint;rich;look for 2169 nearby								
NGC 2236		MON	8.5	OC	7.0m	6h 29.7m	6° 50.0'					50	
					Cl,pRi,pC,*10,12...15 - H VII 5								
NGC 2237		MON	5.5	DN	80m x 60m	6h 30.9m	5° 03.0'	C49	R32		O		
					pB,vvL,dif,part of eL nebs ring ar 2239 - Rosette nebula								
NGC 2238		MON	6.0	DN	80m x 60m	6h 30.7m	5° 01.0'						
Rosette Nebula					F* in neby,part of eL nebs ring ar 2239								
NGC 2239		MON	4.8	OC	24m	6h 31.9m	4° 57.0'					40	
					*8 in L,P,B Cl								
NGC 2244		MON	4.8	DN	24.0m	6h 31.9m	4° 57.0'	C50		S68	O	100	B
					Cl,beautiful,st sc (12 MON) - H VII 2;In Rosette nebula								
NGC 2245		MON		DN	2m x 2m	6h 32.7m	10° 09.0'				O		
					pL,com,mbN sf alm *,*7-8 nf - H IV 3								
NGC 2251		MON	7.3	OC	10.0m	6h 34.6m	8° 22.0'				O	30	B
					Cl,vL,E,Ri,IC - H VIII 3								
NGC 2252		MON	7.7	OC	20.0m	6h 34.7m	5° 22.0'					30	
					Cl,vL,pRi,IC,st S - H VIII 50								
NGC 2254		MON	9.1	OC	4.0m	6h 35.8m	7° 40.0'					50	
					Cl,S,pC,iF,*11...13 - H VII 22								
NGC 2259		MON	10.8	OC	4.5m	6h 38.4m	10° 53.0'					25	
					Cl,cRi,eC,iF,st eS - H VI 28								
NGC 2261		MON		DN	2m x 1m	6h 39.2m	8° 45.0'	C46	R33	S69	O		
Hubble's Variable Nebula					B,vmE 330 deg,N com=*11 - H IV 2; fan-shaped; R Mon invl								
NGC 2264		MON	3.9	DN	20.0m	6h 41.0m	9° 54.0'				O	40	B
					eL neb,3 deg diam,densest 12' sp 15 MON - H V 27=H VIII 5; 20 * mags 6...10 w neby; Near Cone nebula								
NGC 2269		MON	10.0	OC	4.0m	6h 43.3m	4° 37.0'					12	
					Cl,vmC,not Ri,st vS - H VI 3								



Chart 104													
Name	M	Const.	Mag.	Type	Size	R.A.	Decl.	C	R	S	O	# Stars	B
<b>Common</b>					<b>Notes</b>								
NGC 2304		GEM	10.0	OC	5.0m	6h 55.2m	17° 59.0'					30	
					Cl,pL,Ri,mC,st vS - H VI 2								
NGC 2355		GEM	9.7	OC	9.0m	7h 17.0m	13° 45.0'					40	
					Cl,pS,pRi,mC,*15..16 - H VI 6								
NGC 2356		GEM	9.7	OC	9m	7h 17.0m	13° 45.0'						
					Cl,IC - H VII 6								
Tr 5		MON	10.9	OC	8.0m	6h 36.7m	9° 26.0'					150	
					One member is variable V 493 Mon--a red carbon star								