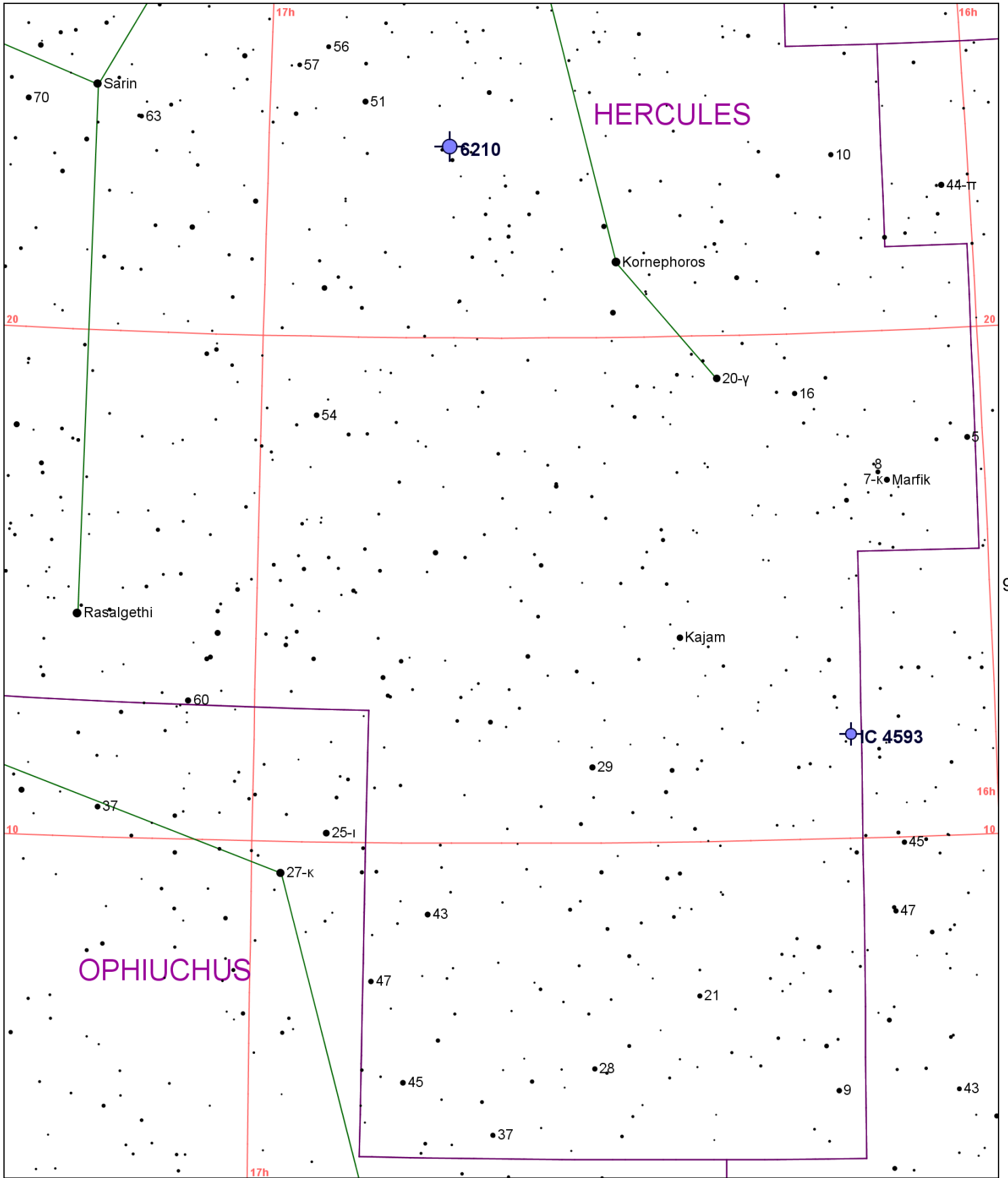


61



88

90

OPHIUCHUS

HERCULES

6210

C 4593

126

127

Chart 89													
Name	M	Const.	Mag.	Type	Size	R.A.	Decl.	C	R	S	O	# Stars	B
Common					Notes								
IC 4593		HER	11.0	PN	12.5s x 10s	16h 11.7m	12° 04.0'						
					S,F,Stellar								
NGC 6210		HER	9.7	PN	20s x 13s	16h 44.5m	23° 48.0'		R90	S56	O		
					vB,vS,R,disc								

61

62

HERCULES

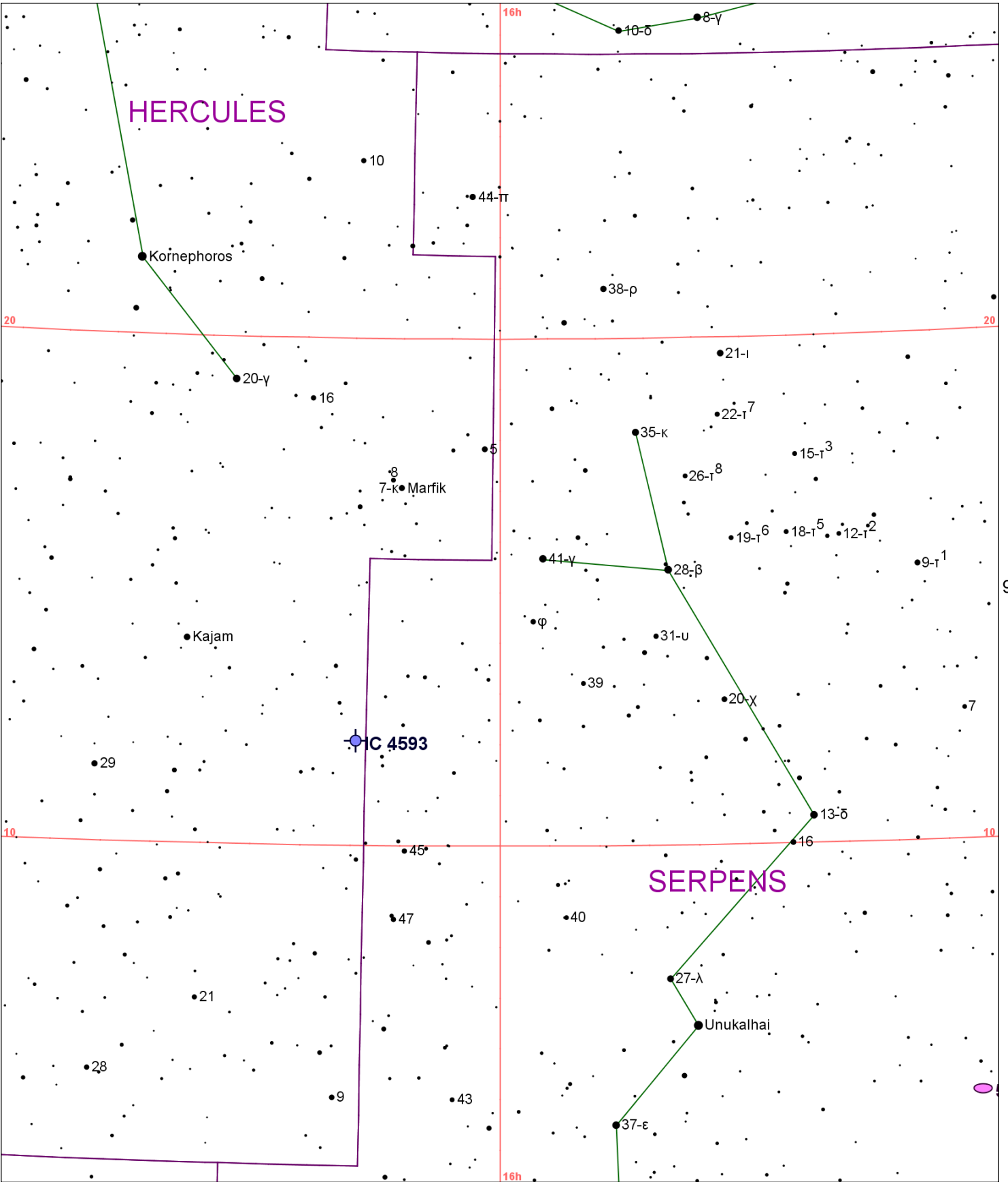


Chart 90													
Name	M	Const.	Mag.	Type	Size	R.A.	Decl.	C	R	S	O	# Stars	B
Common					Notes								
IC 4593		HER	11.0	PN	12.5s x 10s	16h 11.7m	12° 04.0'						
					S,F,Stellar								
NGC 5921		SER	10.8	GAL	4.8m x 4m	15h 21.9m	5° 04.0'						
					cB,cL,iR,vsbM*12,am * - H I 148:eBN in B bar								

62

63

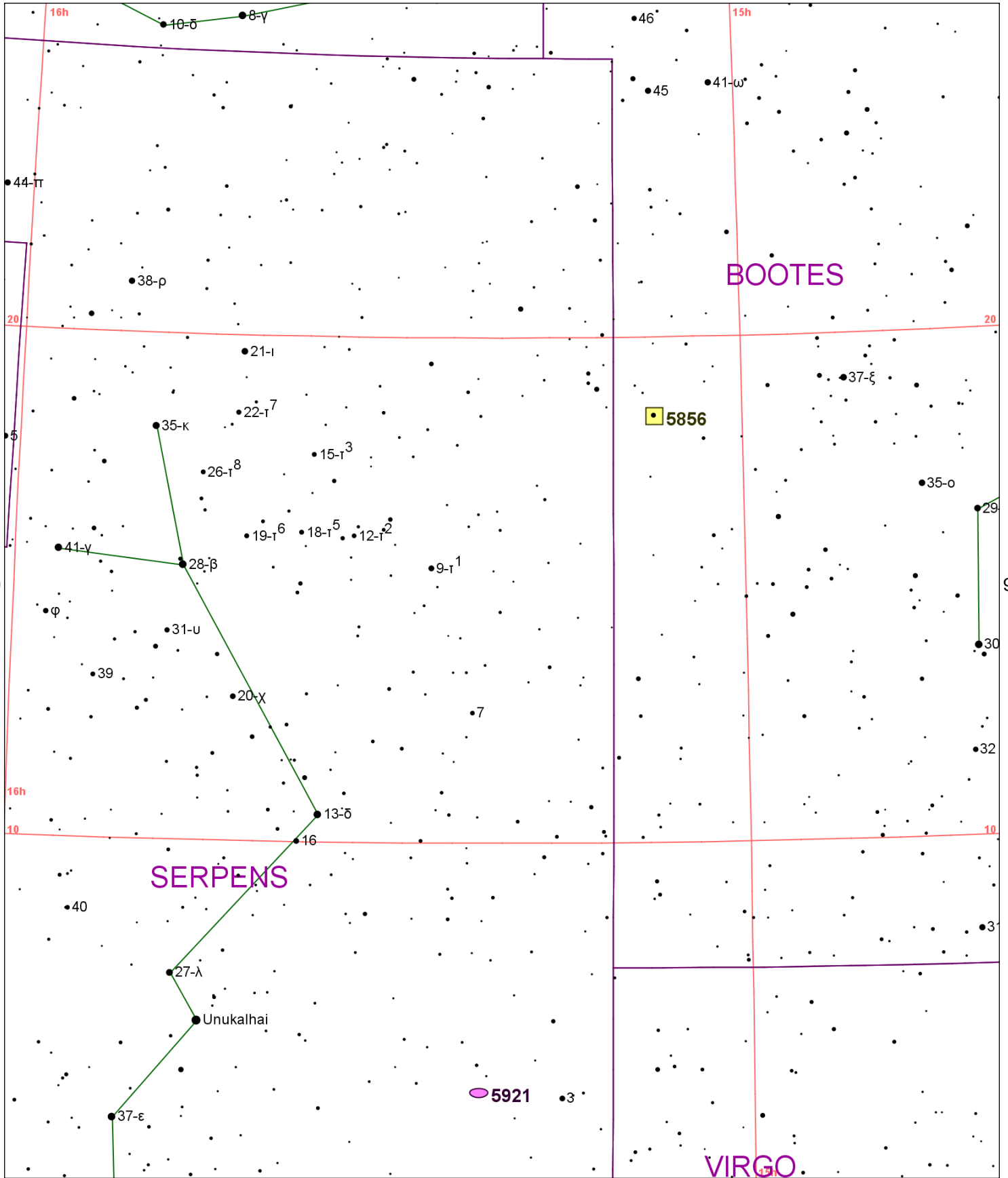


Chart 91													
Name	M	Const.	Mag.	Type	Size	R.A.	Decl.	C	R	S	O	# Stars	B
Common					Notes								
NGC 5856		BOO	6.0	MISC		15h 07.3m	18° 27.0'						
					neb *6? - H IV 71								
NGC 5921		SER	10.8	GAL	4.8m x 4m	15h 21.9m	5° 04.0'						
					cB,cL,iR,vsbM*12,am * - H I 148:eBN in B bar								

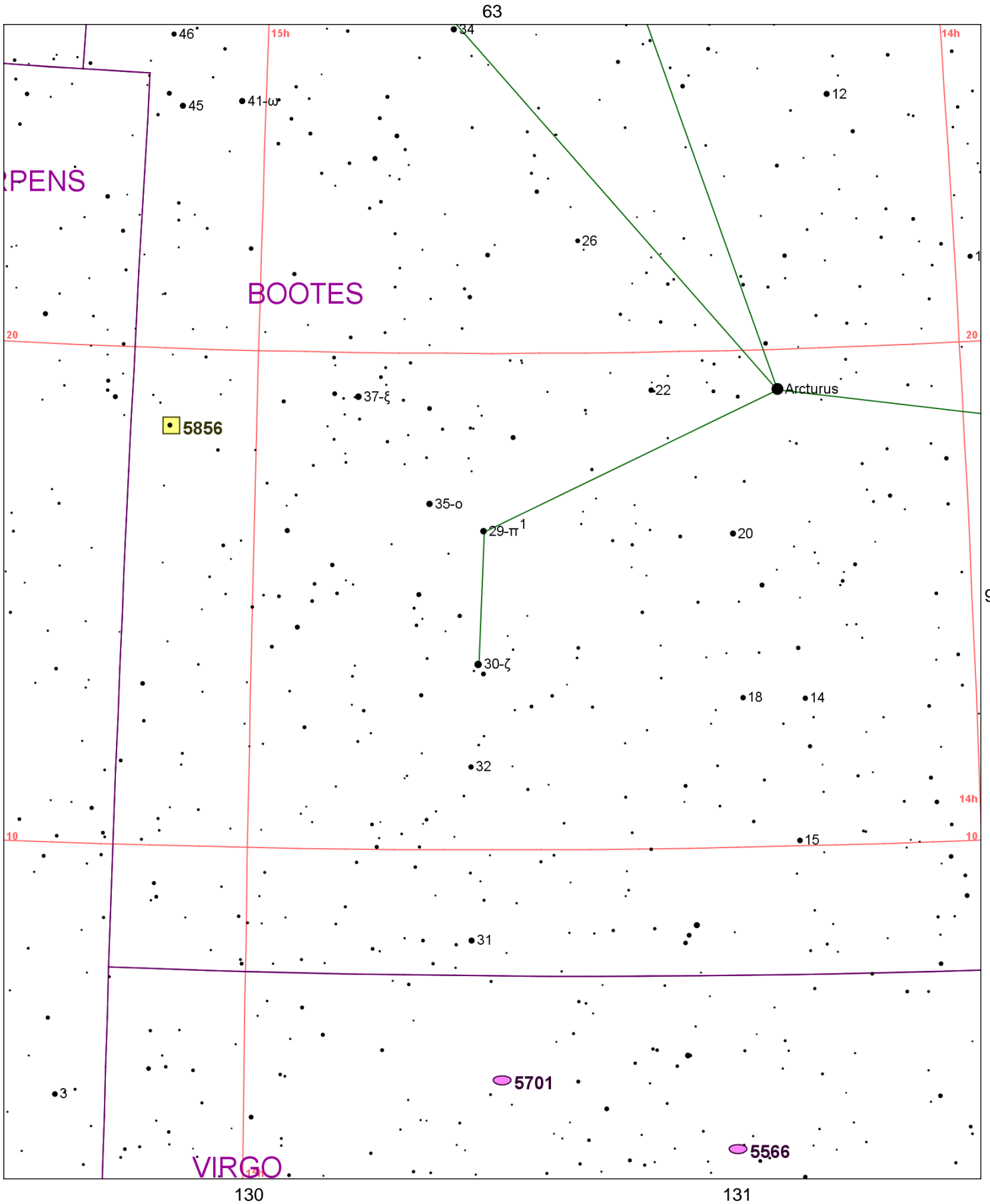
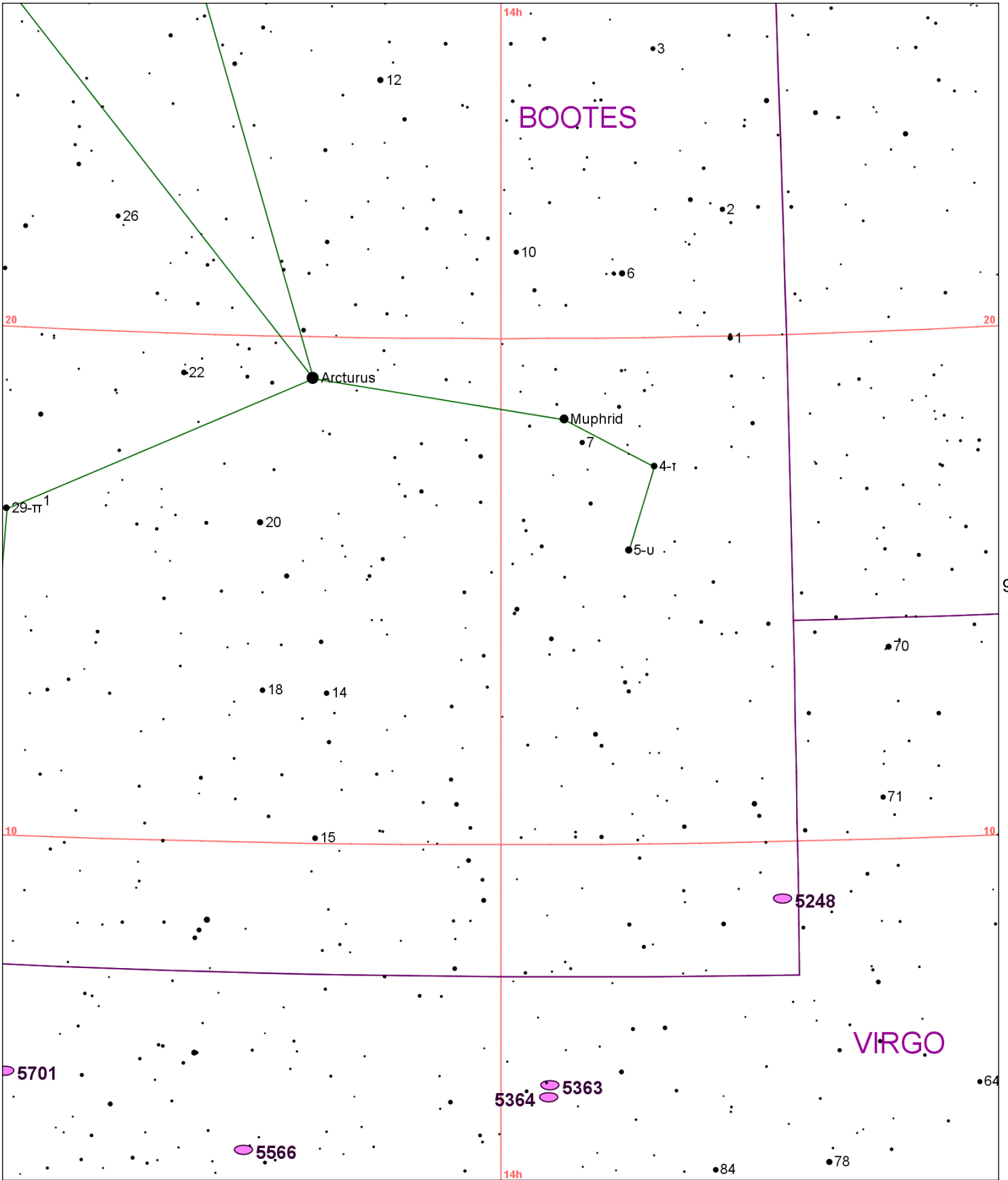


Chart 92													
Name	M	Const.	Mag.	Type	Size	R.A.	Decl.	C	R	S	O	# Stars	B
Common					Notes								
NGC 5566		VIR	10.6	GAL	6.6m x 2.3m	14h 20.3m	3° 56.0'						
					B,pL,R,psbM,r,*f1.5' - H I 144;double galaxy								
NGC 5701		VIR	10.9	GAL	4.7m x 4.6m	14h 39.2m	5° 22.0'				O		
					cB,pS,R,mbM,*11p15" - H II 575;Several vF;vS comps in field								
NGC 5856		BOO	6.0	MISC		15h 07.3m	18° 27.0'						
					neb *6? - H IV 71								

63

64



92

94

131

132

14h

Chart 93													
Name	M	Const.	Mag.	Type	Size	R.A.	Decl.	C	R	S	O	# Stars	B
Common					Notes								
NGC 5248		BOO	10.3	GAL	5.9m x 4.5m	13h 37.5m	8° 53.0'	C45			O		
					B,L,E150,psbMRN - H I 34;eBN in vB lens w many dk lanes								
NGC 5363		VIR	10.1	GAL	4.6m x 3.1m	13h 56.1m	5° 15.0'				O		
					B,pL,R,psbM,*8 nf - H I 6;P w NGC 5364 at 14.5' 2 B dif N in contact								
NGC 5364		VIR	10.5	GAL	6.1m x 4.2m	13h 56.2m	5° 01.0'						
					cF,L,R,gbM - H II 534;sBN in smooth cent w dk matter								
NGC 5566		VIR	10.6	GAL	6.6m x 2.3m	14h 20.3m	3° 56.0'						
					B,pL,R,psbM,r,*f1.5' - H I 144;double galaxy								
NGC 5701		VIR	10.9	GAL	4.7m x 4.6m	14h 39.2m	5° 22.0'				O		
					cB,pS,R,mbM,*11p15" - H II 575;Several vF;vS comps in field								

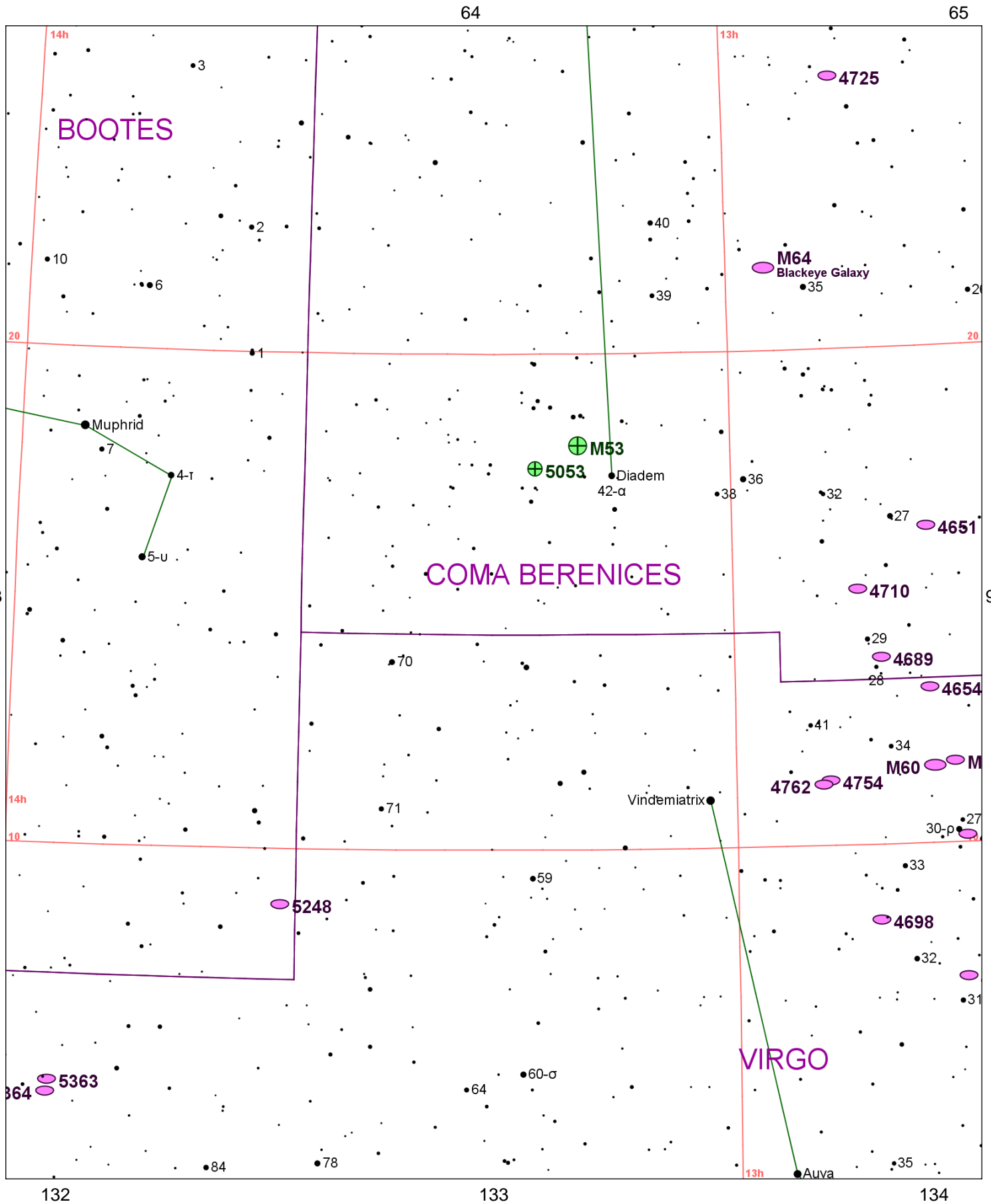


Chart 94													
Name	M	Const.	Mag.	Type	Size	R.A.	Decl.	C	R	S	O	# Stars	B
Common					Notes								
NGC 4608		VIR	11.0	GAL	3.3m x 2.9m	12h 41.2m	10° 09.0'				O		
					pB,pL,R,psbM,r,* np 1' - H II 69;NGC 4596 @ 19.0'								
NGC 4612		VIR	10.9	GAL	2.7m x 2m	12h 41.5m	7° 19.0'						
					pB,S,R,psmbM - H II 148								
NGC 4621	M59	VIR	9.6	GAL	5.3m x 4m	12h 42.0m	11° 39.0'				O		
					B,pL,IE,vsvmbM,2 * p - B diff N;smooth arms								
NGC 4649	M60	VIR	8.8	GAL	7.6m x 6.2m	12h 43.7m	11° 33.0'				O		B
					vB,pL,R,f of Dneb - NGC 4647 @ 2.5'								
NGC 4651		COM	10.8	GAL	4m x 2.7m	12h 43.7m	16° 24.0'						
					cB,L,E90,gbM,r - H II 12								
NGC 4654		VIR	10.5	GAL	5m x 3.1m	12h 43.9m	13° 08.0'				O		
					F,vL,pmE(D?),3 * nr - H II 126								
NGC 4689		COM	10.9	GAL	4.7m x 4m	12h 47.8m	13° 46.0'						
					pB,vL,E,vglbM,r - H II 128								
NGC 4698		VIR	10.6	GAL	4m x 2.9m	12h 48.4m	8° 29.0'						
					cB,pL,iR,bM,r - H I 8								
NGC 4710		COM	11.0	GAL	4.9m x 1.6m	12h 49.6m	15° 10.0'				O		
					cB,pL,vmE28,sbMN - H II 95;equatorial dust lane								
NGC 4725		COM	9.4	GAL	10.4m x 7.2m	12h 50.4m	25° 30.0'		R73	S31	O		
					vB,vL,E,vg,vsvmbM,eBN - H I 84;P w NGC 4712 @ 12.0'								
NGC 4754		VIR	10.6	GAL	4.4m x 2.4m	12h 52.3m	11° 19.0'						
					B,pL,R,psbM,p of 2 - H I 25;P w NGC 4762 11' to NW								
NGC 4762		VIR	10.3	GAL	8.6m x 2m	12h 52.9m	11° 14.0'		R84	S109	O		
					pB,vmE31,3 B * s,f of 2 - H II 75;NGC 4754 @ 10.5';thick streak w tufts at ends								
NGC 4826	M64	COM	8.5	GAL	10.3m x 5m	12h 56.7m	21° 41.0'				O		B
					Blackeye Galaxy								
NGC 5024	M53	COM	7.7	GC	14.4m	13h 12.9m	18° 10.0'				O		B
					!B,vC,iR,vvmbM,st 12... - 1 deg NE of Alpha Comae Berenices								
NGC 5053		COM	9.8	GC	8.9m	13h 16.5m	17° 42.0'						
					Cl,vF,pL,iR,vgbM,st 15 - H VI 7;Low surf brightness;1 deg sf M 53								
NGC 5248		BOO	10.3	GAL	5.9m x 4.5m	13h 37.5m	8° 53.0'	C45			O		
					B,L,E150,psbMRN - H I 34;eBN in vB lens w many dk lanes								
NGC 5363		VIR	10.1	GAL	4.6m x 3.1m	13h 56.1m	5° 15.0'				O		
					B,pL,R,psbM,*8 nf - H I 6;P w NGC 5364 at 14.5' 2 B dif N in contact								
NGC 5364		VIR	10.5	GAL	6.1m x 4.2m	13h 56.2m	5° 01.0'						
					cF,L,R,gbM - H II 534;sBN in smooth cent w dk matter								

65

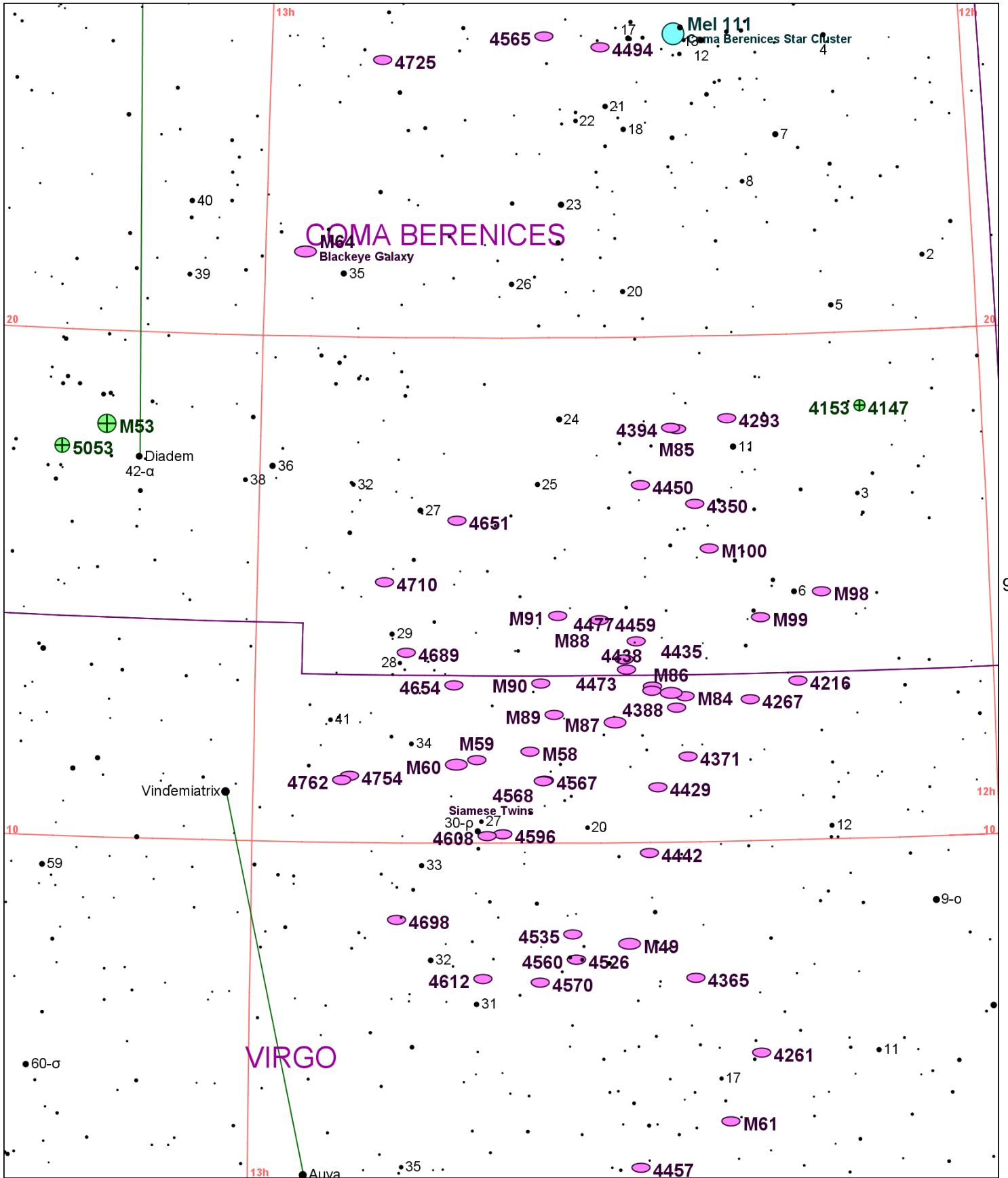


Chart 95													
Name	M	Const.	Mag.	Type	Size	R.A.	Decl.	C	R	S	O	# Stars	B
Common					Notes								
Mel 111		COM	1.8	OC	275m	12h 25.0m	26° 00.0'				O	80	B
Coma Berenices Star Cluster					10X50-eB,eL,nRi,nC; 32* in arrowhead shape								
NGC 4147		COM	10.3	GC	4.0m	12h 10.1m	18° 33.0'						
					vB,pL,R,gbM,rrr - H I 19;Stars F								
NGC 4153		COM	10.3	GC	4.1m	12h 10.1m	18° 33.0'						
					B,pL,E,gbM - H I 11;equals NGC 4147; best possible ID								
NGC 4192	M98	COM	10.1	GAL	9.4m x 2.3m	12h 13.8m	14° 54.0'				O		
					B,vL,vmE152,vsmbM - 6 Comae Berenices is 30' east								
NGC 4216		VIR	10.0	GAL	7.8m x 1.8m	12h 15.9m	13° 09.0'		R76	S102	O		
					vB,vL,vmE17,sbMN - H I 35;UGC 7284;edge on streak;two other in field								
NGC 4254	M99	COM	9.9	GAL	5.3m x 4.6m	12h 18.8m	14° 25.0'				O		
					!,B,L,R,gbM,r,3 branch spiral - SN 1967h;Norton-diff for small scope								
NGC 4261		VIR	10.4	GAL	3.8m x 3.5m	12h 19.4m	5° 49.0'				O		
					pB,pS,R,gbM - H II 139;NGC 4264 @ 3.4';NGC 4257 @ 7.1';UGC 7360;3C270								
NGC 4267		VIR	10.9	GAL	3m x 2.8m	12h 19.8m	12° 48.0'						
					pB,vS,R,vsmbM - H II 166								
NGC 4293		COM	10.4	GAL	5.5m x 2.9m	12h 21.2m	18° 23.0'						
					F,vL,E,lbM,r,vsBN - H V 5;Spiral pattern dim;heavy dust lanes								
NGC 4303	M61	VIR	9.6	GAL	6.5m x 5.9m	12h 21.9m	4° 28.0'				O		B
					vB,vL,vsbM*,biN - SN 1926;1961;1964;NGC 4301 @ 10.0';H I 139:L face-on spiral								
NGC 4321	M100	COM	9.4	GAL	7.5m x 6.1m	12h 22.9m	15° 49.0'				O		
					pF,vL,R,vg,psbMrN,spiral-Rosse - SN 1901-14-59;NGC 4322 @ 5.2';NGC 4328 @ 6.1'								
NGC 4350		COM	11.0	GAL	2.9m x 1.6m	12h 24.0m	16° 42.0'						
					cB,vS,mE,vsbM - H II 86;NGC 4340 @ 5.6';lenticular								
NGC 4365		VIR	9.6	GAL	6.5m x 4.9m	12h 24.5m	7° 19.0'				O		
					cB,pL,vIE,gl,smbM - H I 30;NGC 4370 @ 10.0'								
NGC 4371		VIR	10.8	GAL	4m x 2.3m	12h 24.9m	11° 42.0'				O		
					B,pS,R,gbM - H I 22								
NGC 4374	M84	VIR	9.1	GAL	6.7m x 6m	12h 25.1m	12° 53.0'				O		
					vB,pL,R,psbM - NGC 4387 @ 10.5';center of Virgo cluster								
NGC 4382	M85	COM	9.1	GAL	7.4m x 5.9m	12h 25.4m	18° 11.0'				O		
					vB,pL,R,bM,* np - SN 1960r;P w NGC 4394 @ 7.8' foll								
NGC 4388		VIR	11.0	GAL	5.6m x 1.5m	12h 25.8m	12° 40.0'		R77	S103			
					vF,E,sf of 2 - H II 168;edge on lens shape;16' SE from M 84								
NGC 4394		COM	10.9	GAL	3.4m x 3.2m	12h 25.9m	18° 13.0'						
					pB,IE,bM - H II 55;P w NGC 4382 @ 7.8'								
NGC 4406	M86	VIR	8.9	GAL	9.8m x 6.3m	12h 26.2m	12° 57.0'				O		
					vB,L,R,gbMN - Markarian's chain;comp superimposed @ 1.4';NGC 4402 @ 10.0'								
NGC 4429		VIR	10.0	GAL	5.8m x 2.8m	12h 27.4m	11° 06.0'				O		
					B,L,cE,psbM,*10 nf - H II 65;oval w large outer ring								
NGC 4435		VIR	10.8	GAL	3m x 2.2m	12h 27.7m	13° 05.0'				O		
					vB,cL,R,np of 2 - part of Markarian's Chain; H I 28;NGC 4438 @ 4.3' SSE								
NGC 4438		VIR	10.2	GAL	8.5m x 3m	12h 27.8m	13° 00.0'		R78	S104	O		
					B,cL,vIE,r,sf of 2 - part of Markarian's Chain; H I 28;NGC 4435 @ 4.4';long filaments								
NGC 4442		VIR	10.4	GAL	4.5m x 1.8m	12h 28.1m	9° 48.0'				O		
					vB,pL,R,smbM - H II 156								
NGC 4450		COM	10.1	GAL	5.4m x 4.1m	12h 28.5m	17° 05.0'				O		
					B,L,R,gvmbM*,r,B* sp - H II 56								
NGC 4457		VIR	10.9	GAL	2.6m x 2.3m	12h 29.0m	3° 34.0'						
					cB,pS,R,smbMN,vBN - H II 35								
NGC 4459		COM	10.4	GAL	4m x 3.1m	12h 29.0m	13° 59.0'				O		
					pB,pL,iR,bM,r,*8 sf 2' - H I 161;comp @ 2.2';NGC 4468 @ 8.5';NGC 4474 @ 13.5'								
NGC 4472	M49	VIR	8.4	GAL	9.8m x 8.2m	12h 29.8m	8° 00.0'				O		B
					vB,L,R,mbM,r - NGC 4467 @ 4.2';NGC 4470 @ 10.5';NGC 4465 @ 5.8'								
NGC 4473		COM	10.2	GAL	4.2m x 2.6m	12h 29.8m	13° 26.0'				O		
					pB - part of Markarian's Chain; H II 114								
NGC 4477		COM	10.4	GAL	3.7m x 3.3m	12h 30.0m	13° 38.0'				O		

Chart 95													
Name	M	Const.	Mag.	Type	Size	R.A.	Decl.	C	R	S	O	# Stars	B
Common					Notes								
					pB,cL - part of Markarian's Chain; H II 115;NGC 4479 @5.3'								
NGC 4486	M87	VIR	8.6	GAL	8.7m x 6.6m	12h 30.8m	12° 23.0'				O		B
					vB,vL,R,mbM,3 of 3 - B in Virgo cluster;NGC 4486A @ 7.5' ssf;NGC 4486B @ 7.3'								
NGC 4494		COM	9.8	GAL	4.5m x 4.3m	12h 31.4m	25° 46.0'		R70	S28	O		
					vB,pL,R,vsmbMN - H I 83								
NGC 4501	M88	COM	9.6	GAL	6.8m x 3.7m	12h 32.0m	14° 25.0'				O		
					B,vL,vmE - comp @ 6.9';mult arm spiral								
NGC 4526		VIR	9.7	GAL	7m x 2.5m	12h 34.0m	7° 42.0'		R80	S105	O		
					vB,vL,mE120,psmbM - H I 31;lenticular;between two 7th mag stars								
NGC 4535		VIR	10.0	GAL	6.9m x 5.4m	12h 34.3m	8° 12.0'		R81	S106	O		
					pF,vL,r,vseBN or * - H II 500;Ho 420b @ 5.0';S-shaped spiral								
NGC 4548	M91	COM	10.1	GAL	5.2m x 4.2m	12h 35.4m	14° 30.0'				O		
					B,L,IE,lbM - NGC 4571 @ 27.0';H II 120;F outer arms in S patrn								
NGC 4552	M89	VIR	9.8	GAL	5.3m x 4.8m	12h 35.7m	12° 33.0'				O		
					pB,pS,R,gmbM								
NGC 4560		VIR	10.6	GAL	7m x 2.5m	12h 34.0m	7° 42.0'						
					cB,pL,R,gbM - H I 119								
NGC 4565		COM	9.6	GAL	14.9m x 2m	12h 36.3m	25° 59.0'	C38	R72	S30	O		
					!!B,eL,eE135,vsbMN = *10-11 - H V 24;NGC 4562 @ 13.4';classic edge-on galaxy								
NGC 4567		VIR	11.3	GAL	3.1m x 2.2m	12h 36.5m	11° 15.0'		R82	S107	O		
					vF,L,np of Dneb - H IV 8;NGC 4568 @ 1.2';Siamese Twins								
NGC 4568		VIR	10.8	GAL	4.6m x 2.2m	12h 36.6m	11° 14.0'						
					Siamese Twins								
					vF,L,sf of Dneb - H IV 9;NGC 4567 @ 1.2';overlaps 4567								
NGC 4569	M90	VIR	9.5	GAL	9.9m x 4.4m	12h 36.8m	13° 10.0'				O		
					pL,bMN - IC 3583 @ 6.0';vseBN in B diff bar w much dark matter								
NGC 4570		VIR	10.9	GAL	3.7m x 1.2m	12h 36.9m	7° 15.0'						
					cB,pS,mE0,sbM - H I 32;lens shaped;in field of R VIR								
NGC 4579	M58	VIR	9.7	GAL	6m x 4.8m	12h 37.7m	11° 49.0'				O		
					B,L,iR,vmbM - fine compact spiral								
NGC 4596		VIR	10.4	GAL	4m x 3.4m	12h 39.9m	10° 11.0'				O		
					B,pS,R,gmbM,r,3 * f - H I 24;NGC 4608 @ 19.0';disc w projecting ansae								
NGC 4608		VIR	11.0	GAL	3.3m x 2.9m	12h 41.2m	10° 09.0'				O		
					pB,pL,R,psbM,r,* np 1' - H II 69;NGC 4596 @ 19.0'								
NGC 4612		VIR	10.9	GAL	2.7m x 2m	12h 41.5m	7° 19.0'						
					pB,S,R,psmbM - H II 148								
NGC 4621	M59	VIR	9.6	GAL	5.3m x 4m	12h 42.0m	11° 39.0'				O		
					B,pL,IE,vsvmbM,2 * p - B diff N;smooth arms								
NGC 4649	M60	VIR	8.8	GAL	7.6m x 6.2m	12h 43.7m	11° 33.0'				O		B
					vB,pL,R,f of Dneb - NGC 4647 @ 2.5'								
NGC 4651		COM	10.8	GAL	4m x 2.7m	12h 43.7m	16° 24.0'						
					cB,L,E90,gbM,r - H II 12								
NGC 4654		VIR	10.5	GAL	5m x 3.1m	12h 43.9m	13° 08.0'				O		
					F,vL,pmE(D?),3 * nr - H II 126								
NGC 4689		COM	10.9	GAL	4.7m x 4m	12h 47.8m	13° 46.0'						
					pB,vL,E,vglbM,r - H II 128								
NGC 4698		VIR	10.6	GAL	4m x 2.9m	12h 48.4m	8° 29.0'						
					cB,pL,iR,bM,r - H I 8								
NGC 4710		COM	11.0	GAL	4.9m x 1.6m	12h 49.6m	15° 10.0'				O		
					cB,pL,vmE28,sbMN - H II 95;equatorial dust lane								
NGC 4725		COM	9.4	GAL	10.4m x 7.2m	12h 50.4m	25° 30.0'		R73	S31	O		
					vB,vL,E,vg,vsvmbM,eBN - H I 84;P w NGC 4712 @ 12.0'								
NGC 4754		VIR	10.6	GAL	4.4m x 2.4m	12h 52.3m	11° 19.0'						
					B,pL,R,psbM,p of 2 - H I 25;P w NGC 4762 11' to NW								
NGC 4762		VIR	10.3	GAL	8.6m x 2m	12h 52.9m	11° 14.0'		R84	S109	O		
					pB,vmE31,3 B * s,f of 2 - H II 75;NGC 4754 @ 10.5';thick streak w tufts at ends								
NGC 4826	M64	COM	8.5	GAL	10.3m x 5m	12h 56.7m	21° 41.0'				O		B
Blackeye Galaxy					!vB,vL,vmE120,bM,SBN - dark ;marking nr center								

Chart 95													
Name	M	Const.	Mag.	Type	Size	R.A.	Decl.	C	R	S	O	# Stars	B
Common					Notes								
NGC 5024	M53	COM	7.7	GC	14.4m	13h 12.9m	18° 10.0'				O		B
					!B,vC,iR,vvmbM,st 12... - 1 deg NE of Alpha Comae Berenices								
NGC 5053		COM	9.8	GC	8.9m	13h 16.5m	17° 42.0'						
					Cl,vF,pL,iR,vgbM,st 15 - H VI 7;Low surf brightness;1 deg sf M 53								

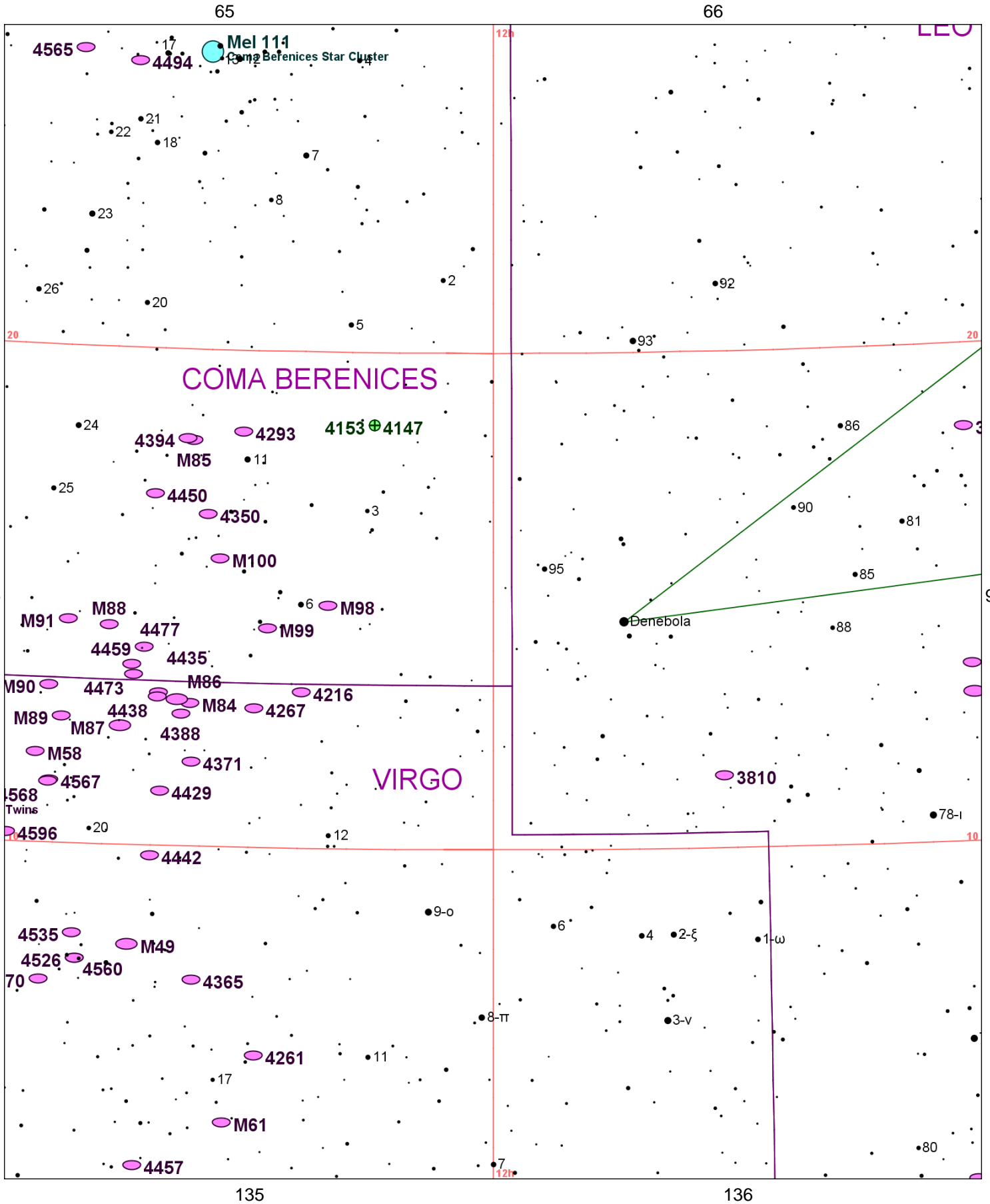


Chart 96													
Name	M	Const.	Mag.	Type	Size	R.A.	Decl.	C	R	S	O	# Stars	B
Common					Notes								
Mel 111		COM	1.8	OC	275m	12h 25.0m	26° 00.0'				O	80	B
Coma Berenices Star Cluster					10X50-eB,eL,nRi,nC; 32* in arrowhead shape								
NGC 3626		LEO	11.0	GAL	3.2m x 2.4m	11h 20.1m	18° 21.0'	C40					
					B,S,vIE,sbM - H II 52;Indense part of clust;nearest comp 2' PA73 .5'X0.4'								
NGC 3627	M66	LEO	8.9	GAL	9.1m x 4.1m	11h 20.2m	13° 00.0'				O		B
					B,vL,mE 150,mbM,2 st np - brightest in group;M 65 & NGC 3628 in field								
NGC 3628		LEO	9.5	GAL	13.1m x 3.1m	11h 20.3m	13° 35.0'		R58	S64	O		
					pB,vL,vmE 102 - H V 8;Leo group;disturbed								
NGC 3640		LEO	10.4	GAL	4.5m x 4m	11h 21.1m	3° 14.0'				O		
					B,pL,R,psbM - H II 33;P w NGC 3641 at 2.5';PA170								
NGC 3810		LEO	10.8	GAL	4.1m x 2.7m	11h 41.0m	11° 28.0'				O		
					B,L,vIE - H I 21								
NGC 4147		COM	10.3	GC	4.0m	12h 10.1m	18° 33.0'						
					vB,pL,R,gbM,rrr - H I 19;Stars F								
NGC 4153		COM	10.3	GC	4.1m	12h 10.1m	18° 33.0'						
					B,pL,E,bM - H I 11;equals NGC 4147; best possible ID								
NGC 4192	M98	COM	10.1	GAL	9.4m x 2.3m	12h 13.8m	14° 54.0'				O		
					B,vL,vmE152,vsmbM - 6 Comae Berenices is 30' east								
NGC 4216		VIR	10.0	GAL	7.8m x 1.8m	12h 15.9m	13° 09.0'		R76	S102	O		
					vB,vL,vmE17,sbMN - H I 35;UGC 7284;edge on streak;two other in field								
NGC 4254	M99	COM	9.9	GAL	5.3m x 4.6m	12h 18.8m	14° 25.0'				O		
					!,B,L,R,gbM,r,3 branch spiral - SN 1967h;Norton-diff for small scope								
NGC 4261		VIR	10.4	GAL	3.8m x 3.5m	12h 19.4m	5° 49.0'				O		
					pB,pS,R,gbM - H II 139;NGC 4264 @ 3.4';NGC 4257 @ 7.1';UGC 7360;3C270								
NGC 4267		VIR	10.9	GAL	3m x 2.8m	12h 19.8m	12° 48.0'						
					pB,vS,R,vsmbM - H II 166								
NGC 4293		COM	10.4	GAL	5.5m x 2.9m	12h 21.2m	18° 23.0'						
					F,vL,E,lbM,r,vsBN - H V 5;Spiral pattern dim;heavy dust lanes								
NGC 4303	M61	VIR	9.6	GAL	6.5m x 5.9m	12h 21.9m	4° 28.0'				O		B
					vB,vL,vsbM*,biN - SN 1926;1961;1964;NGC 4301 @ 10.0';H I 139:L face-on spiral								
NGC 4321	M100	COM	9.4	GAL	7.5m x 6.1m	12h 22.9m	15° 49.0'				O		
					pF,vL,R,vg,psbMrN,spiral-Rosse - SN 1901-14-59;NGC 4322 @ 5.2';NGC 4328 @ 6.1'								
NGC 4350		COM	11.0	GAL	2.9m x 1.6m	12h 24.0m	16° 42.0'						
					cB,vS,mE,vsbM - H II 86;NGC 4340 @ 5.6';lenticular								
NGC 4365		VIR	9.6	GAL	6.5m x 4.9m	12h 24.5m	7° 19.0'				O		
					cB,pL,vIE,gl,smbM - H I 30;NGC 4370 @ 10.0'								
NGC 4371		VIR	10.8	GAL	4m x 2.3m	12h 24.9m	11° 42.0'				O		
					B,pS,R,gbM - H I 22								
NGC 4374	M84	VIR	9.1	GAL	6.7m x 6m	12h 25.1m	12° 53.0'				O		
					vB,pL,R,psbM - NGC 4387 @ 10.5';center of Virgo cluster								
NGC 4382	M85	COM	9.1	GAL	7.4m x 5.9m	12h 25.4m	18° 11.0'				O		
					vB,pL,R,bM,* np - SN 1960r;P w NGC 4394 @ 7.8' foll								
NGC 4388		VIR	11.0	GAL	5.6m x 1.5m	12h 25.8m	12° 40.0'		R77	S103			
					vF,E,sf of 2 - H II 168;edge on lens shape;16' SE from M 84								
NGC 4394		COM	10.9	GAL	3.4m x 3.2m	12h 25.9m	18° 13.0'						
					pB,IE,bM - H II 55;P w NGC 4382 @ 7.8'								
NGC 4406	M86	VIR	8.9	GAL	9.8m x 6.3m	12h 26.2m	12° 57.0'				O		
					vB,L,R,gbMN - Markarian's chain;comp superimposed @ 1.4';NGC 4402 @ 10.0'								
NGC 4429		VIR	10.0	GAL	5.8m x 2.8m	12h 27.4m	11° 06.0'				O		
					B,L,cE,psbM,*10 nf - H II 65;oval w large outer ring								
NGC 4435		VIR	10.8	GAL	3m x 2.2m	12h 27.7m	13° 05.0'				O		
					vB,cL,R,np of 2 - part of Markarian's Chain; H I 28;NGC 4438 @ 4.3' SSE								
NGC 4438		VIR	10.2	GAL	8.5m x 3m	12h 27.8m	13° 00.0'		R78	S104	O		
					B,cL,vIE,r,sf of 2 - part of Markarian's Chain; H I 28;NGC 4435 @ 4.4';long filaments								
NGC 4442		VIR	10.4	GAL	4.5m x 1.8m	12h 28.1m	9° 48.0'				O		
					vB,pL,R,smbM - H II 156								
NGC 4450		COM	10.1	GAL	5.4m x 4.1m	12h 28.5m	17° 05.0'				O		

Chart 96													
Name	M	Const.	Mag.	Type	Size	R.A.	Decl.	C	R	S	O	# Stars	B
Common					Notes								
					B,L,R,gvmbM*,r,B* sp - H II 56								
NGC 4457		VIR	10.9	GAL	2.6m x 2.3m	12h 29.0m	3° 34.0'						
					cB,pS,R,smbMN,vBN - H II 35								
NGC 4459		COM	10.4	GAL	4m x 3.1m	12h 29.0m	13° 59.0'				O		
					pB,pL,iR,bM,r,*8 sf 2' - H I 161;comp @ 2.2';NGC 4468 @ 8.5';NGC 4474 @ 13.5'								
NGC 4472	M49	VIR	8.4	GAL	9.8m x 8.2m	12h 29.8m	8° 00.0'				O		B
					vB,L,R,mbM,r - NGC 4467 @ 4.2';NGC 4470 @ 10.5';NGC 4465 @ 5.8'								
NGC 4473		COM	10.2	GAL	4.2m x 2.6m	12h 29.8m	13° 26.0'				O		
					pB - part of Markarian's Chain; H II 114								
NGC 4477		COM	10.4	GAL	3.7m x 3.3m	12h 30.0m	13° 38.0'				O		
					pB,cL - part of Markarian's Chain; H II 115;NGC 4479 @ 5.3'								
NGC 4486	M87	VIR	8.6	GAL	8.7m x 6.6m	12h 30.8m	12° 23.0'				O		B
					vB,vL,R,mbM,3 of 3 - B in Virgo cluster;NGC 4486A @ 7.5' ssf;NGC 4486B @ 7.3'								
NGC 4494		COM	9.8	GAL	4.5m x 4.3m	12h 31.4m	25° 46.0'		R70	S28	O		
					vB,pL,R,vsmBMN - H I 83								
NGC 4501	M88	COM	9.6	GAL	6.8m x 3.7m	12h 32.0m	14° 25.0'				O		
					B,vL,vmE - comp @ 6.9';mult arm spiral								
NGC 4526		VIR	9.7	GAL	7m x 2.5m	12h 34.0m	7° 42.0'		R80	S105	O		
					vB,vL,mE120,psmbM - H I 31;lenticular;between two 7th mag stars								
NGC 4535		VIR	10.0	GAL	6.9m x 5.4m	12h 34.3m	8° 12.0'		R81	S106	O		
					pF,vL,r,vseBN or * - H II 500;Ho 420b @ 5.0';S-shaped spiral								
NGC 4548	M91	COM	10.1	GAL	5.2m x 4.2m	12h 35.4m	14° 30.0'				O		
					B,L,IE,lbM - NGC 4571 @ 27.0';H II 120;F outer arms in S patrn								
NGC 4552	M89	VIR	9.8	GAL	5.3m x 4.8m	12h 35.7m	12° 33.0'				O		
					pB,pS,R,gmbM								
NGC 4560		VIR	10.6	GAL	7m x 2.5m	12h 34.0m	7° 42.0'						
					cB,pL,R,gbM - H I 119								
NGC 4565		COM	9.6	GAL	14.9m x 2m	12h 36.3m	25° 59.0'	C38	R72	S30	O		
					!!B,eL,eE135,vsbMN = *10-11 - H V 24;NGC 4562 @ 13.4';classic edge-on galaxy								
NGC 4567		VIR	11.3	GAL	3.1m x 2.2m	12h 36.5m	11° 15.0'		R82	S107	O		
					vF,L,np of Dneb - H IV 8;NGC 4568 @ 1.2';Siamese Twins								
NGC 4568		VIR	10.8	GAL	4.6m x 2.2m	12h 36.6m	11° 14.0'						
Siamese Twins					vF,L,sf of Dneb - H IV 9;NGC 4567 @ 1.2';overlaps 4567								
NGC 4569	M90	VIR	9.5	GAL	9.9m x 4.4m	12h 36.8m	13° 10.0'				O		
					pL,bMN - IC 3583 @ 6.0';vseBN in B diff bar w much dark matter								
NGC 4570		VIR	10.9	GAL	3.7m x 1.2m	12h 36.9m	7° 15.0'						
					cB,pS,mE0,sbM - H I 32;lens shaped;in field of R VIR								
NGC 4579	M58	VIR	9.7	GAL	6m x 4.8m	12h 37.7m	11° 49.0'				O		
					B,L,iR,vmbM - fine compact spiral								
NGC 4596		VIR	10.4	GAL	4m x 3.4m	12h 39.9m	10° 11.0'				O		
					B,pS,R,gmbM,r,3 * f - H I 24;NGC 4608 @ 19.0';disc w projecting ansae								