

50

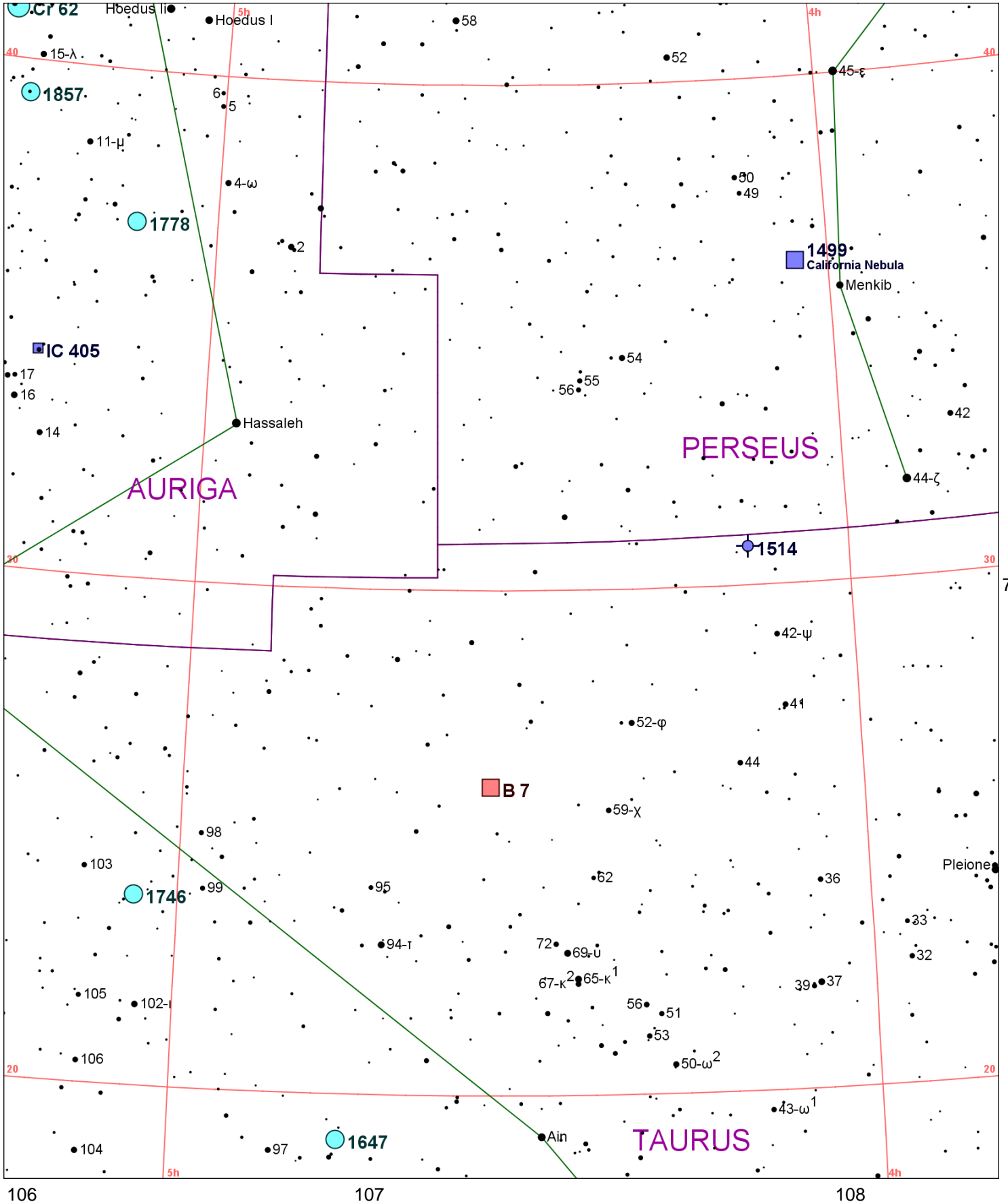


Chart 73													
Name	M	Const.	Mag.	Type	Size	R.A.	Decl.	C	R	S	O	# Stars	B
<b>Common</b>					<b>Notes</b>								
B 7		TAU		DN	600m	4h 33.0m	26° 06.0'						
					Narrow lanes E-W;Area contains B22-24 and B208-220								
Cr 62		AUR	4.2	OC	28.0m	5h 22.5m	40° 60.0'						
IC 405		AUR	10.0	DN	50m x 30m	5h 16.5m	34° 21.0'	C31					
					* 6.7 w pB,vL neb - Flaming Star nebula;variable AE Aur in center of neby								
NGC 1499		PER	5.0	DN	160m x 40m	4h 03.2m	36° 22.0'				O		
California Nebula					vF,vL,mE ns,dif - 0.6 deg from Xi Per								
NGC 1514		TAU	10.8	PN	120s x 90s	4h 09.3m	30° 47.0'		R23		O		
					*9 in neb 3'Diam - H IV 69;PK165-15.1								
NGC 1647		TAU	6.4	OC	45m	4h 45.9m	19° 06.0'				O	200	B
					Cl,vL,st L,sC - H VIII 8								
NGC 1746		TAU	6.1	OC	42m	5h 03.8m	23° 46.0'				O	20	B
					Cl,P								
NGC 1778		AUR	7.7	OC	7m	5h 08.1m	37° 01.0'				O	25	
					Cl,pC,IRi,iF,st L - H VIII 61								
NGC 1857		AUR	7.0	OC	6m	5h 20.1m	39° 21.0'				O	40	
					Cl,pRi,pC,st7... - H VII 33								

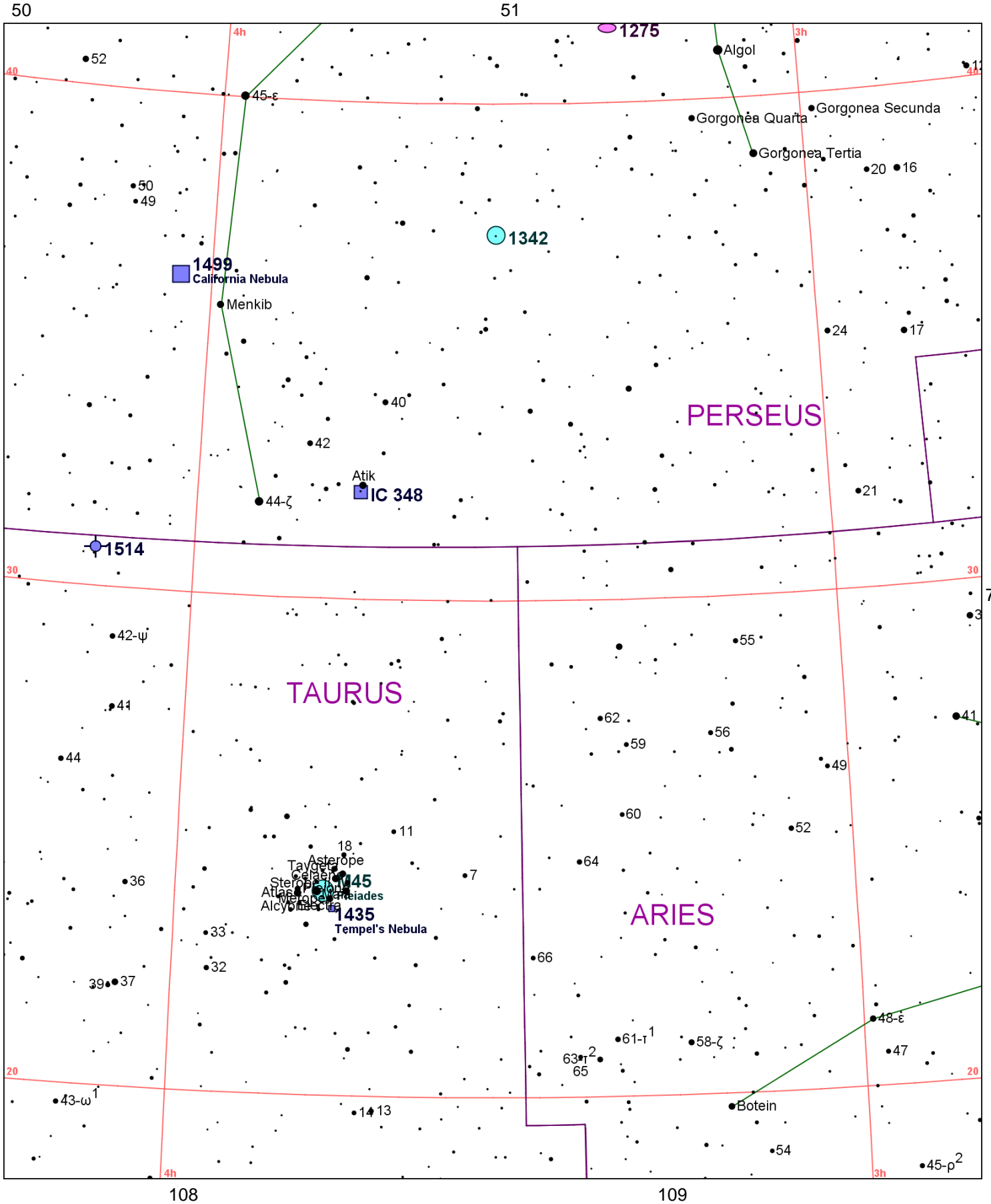


Chart 74													
Name	M	Const.	Mag.	Type	Size	R.A.	Decl.	C	R	S	O	# Stars	B
<b>Common</b>					<b>Notes</b>								
IC 348		PER	7.3	DN	10m x 10m	3h 44.6m	32° 10.0'					20	
					pB,vL,vgbM - With faint neby;surrounds Omicron Persei;near B4								
Mel 22	M45	TAU	1.2	OC	100m	3h 47.0m	24° 07.0'				O	100	B
Pleiades					vvB,vL,brilliant naked eye cluster,neb inv - aka Subaru; nebys NGC 1432 and 1435 involved								
NGC 1275		PER	11.9	GAL	2.3m x 1.6m	3h 19.8m	41° 31.0'	C24			O		
					F,S - Seyfert;brtst in Persus Cl;center obj in dense galxy cluster								
NGC 1342		PER	6.7	OC	14.0m	3h 31.7m	37° 22.0'				O	40	B
					Cl,vL,ab60* - H VIII 88								
NGC 1435		TAU		DN	30m x 30m	3h 46.2m	23° 46.0'				O		
Tempel's Nebula					vF,vL,diff,(Merope in Pleiades) - fan-shaped								
NGC 1499		PER	5.0	DN	160m x 40m	4h 03.2m	36° 22.0'				O		
California Nebula					vF,vL,mE ns,dif - 0.6 deg from Xi Per								
NGC 1514		TAU	10.8	PN	120s x 90s	4h 09.3m	30° 47.0'		R23		O		
					*9 in neb 3'Diam - H IV 69;PK165-15.1								

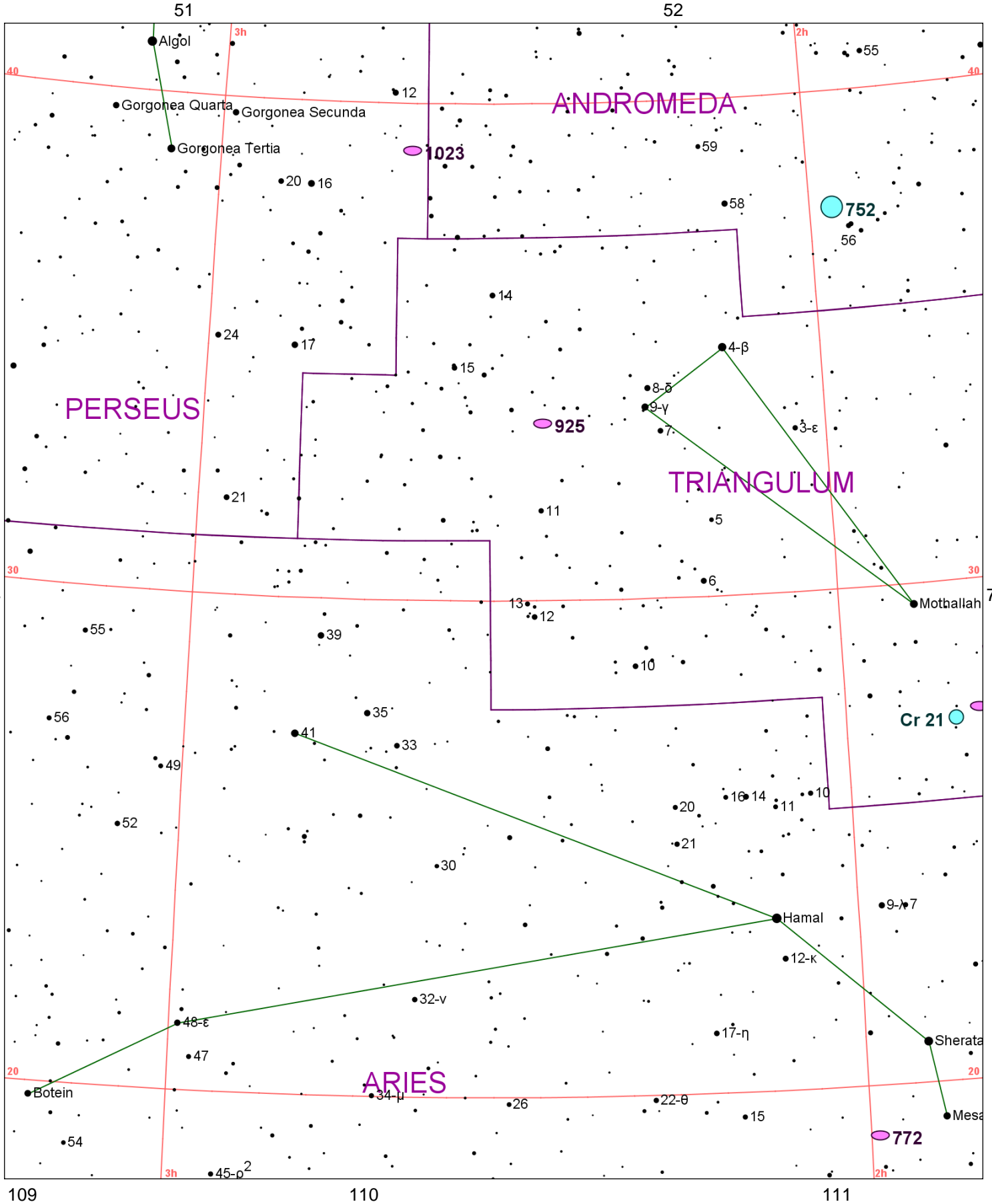


Chart 75													
Name	M	Const.	Mag.	Type	Size	R.A.	Decl.	C	R	S	O	# Stars	B
<b>Common</b>					<b>Notes</b>								
Cr 21		TRI	8.2	OC	6.0m	1h 50.1m	27° 15.0'					20	
					group of 15 *								
NGC 672		TRI	10.9	GAL	7.5m x 2.6m	1h 47.9m	27° 26.0'				O		
					F,pL,mE80 - H I 157;Brightest in group;coarse spiral								
NGC 752		AND	5.7	OC	50m	1h 57.7m	37° 40.0'	C28			O	60	B
					Cl,vvL,Ri,*L & S,C - H VII 32;Best in RFT or binocs;lr scattered cl 70* mags 8...								
NGC 772		ARI	10.3	GAL	7.5m x 4.3m	1h 59.3m	18° 60.0'		R14	S6	O		
					B,cL,R,gbM,r - H I 112;Several tightly coiled arms br on NW side;UGC 1466								
NGC 925		TRI	10.1	GAL	10.9m x 6.2m	2h 27.3m	33° 35.0'				O		
					cF,cL,E,vgbM,2*13 np - H III 177;NGC 1023 group;coarse spiral								
NGC 1023		PER	9.4	GAL	8.1m x 3.4m	2h 40.4m	39° 04.0'		R18	S81	O		
					vB,vL,vmE,vvmbM - H I 156;brtst in grp;more neb 10' E;lens shp F tuft on E tip								

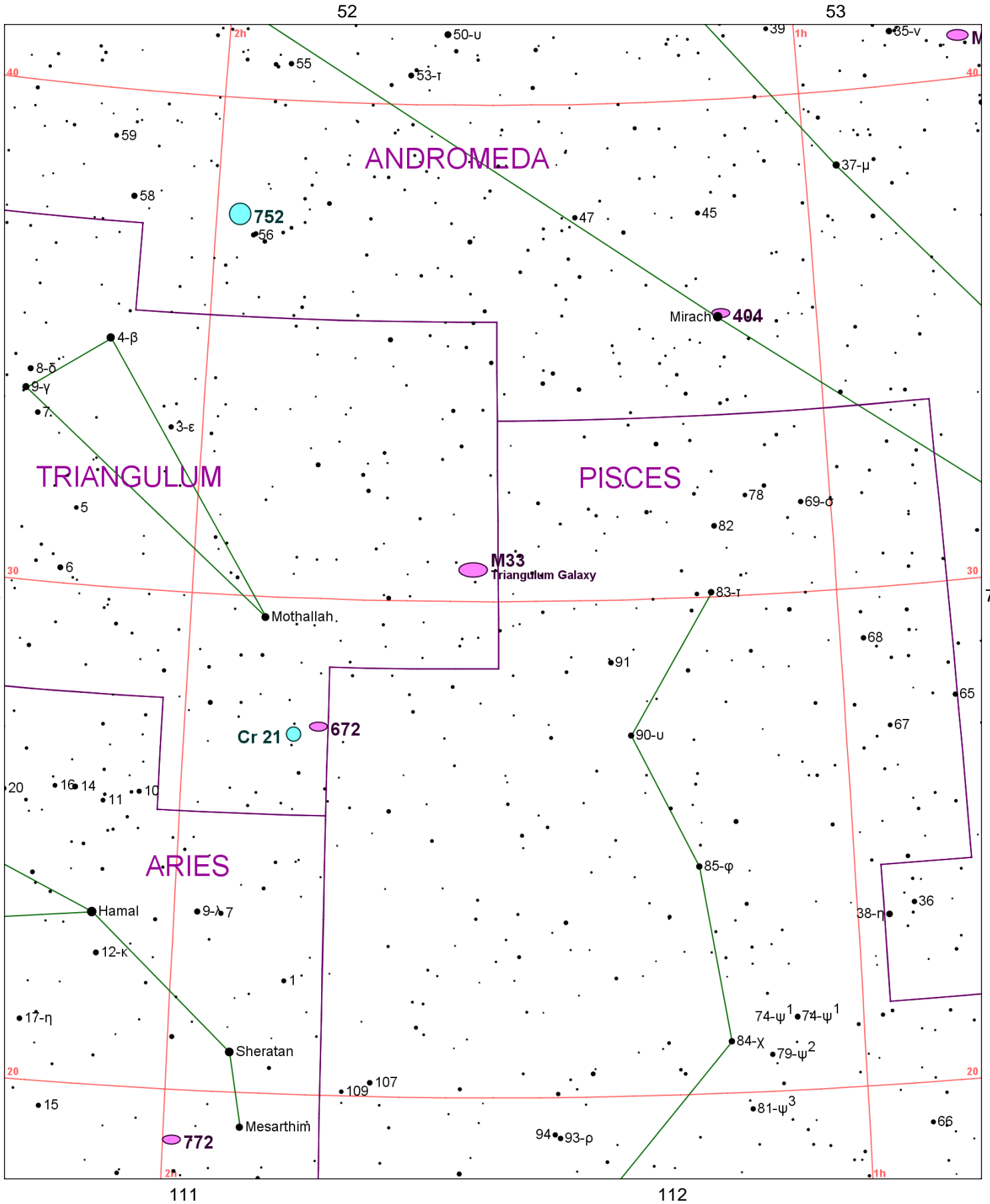


Chart 76													
Name	M	Const.	Mag.	Type	Size	R.A.	Decl.	C	R	S	O	# Stars	B
<b>Common</b>					<b>Notes</b>								
Cr 21		TRI	8.2	OC	6.0m	1h 50.1m	27° 15.0'					20	
					group of 15 *								
NGC 221	M32	AND	8.1	GAL	8.5m x 6.5m	0h 42.7m	40° 52.0'				O		B
					vvB,L,R,psmbMN - M31 Triplicate;Comp to M31								
NGC 404		AND	10.3	GAL	4.3m x 3.9m	1h 09.4m	35° 43.0'				O		
					pB,cL,R,gbM - H II 224;UGC 718;Beta AND sf 6'								
NGC 598	M33	TRI	5.7	GAL	68.7m x 41.6m	1h 33.9m	30° 39.0'				O		B
					Triangulum Galaxy								
					eB,eL,R,vgbMN - Local Group;H V 17								
NGC 672		TRI	10.9	GAL	7.5m x 2.6m	1h 47.9m	27° 26.0'				O		
					F,pL,mE80 - H I 157;Brightest in group;coarse spiral								
NGC 752		AND	5.7	OC	50m	1h 57.7m	37° 40.0'	C28			O	60	B
					Cl,vvL,Ri,*L & S,C - H VII 32;Best in RFT or binocs;lr scattered cl 70* mags 8...								
NGC 772		ARI	10.3	GAL	7.5m x 4.3m	1h 59.3m	18° 60.0'		R14	S6	O		
					B,cL,R,gbM,r - H I 112;Several tightly coiled arms br on NW side;UGC 1466								



53

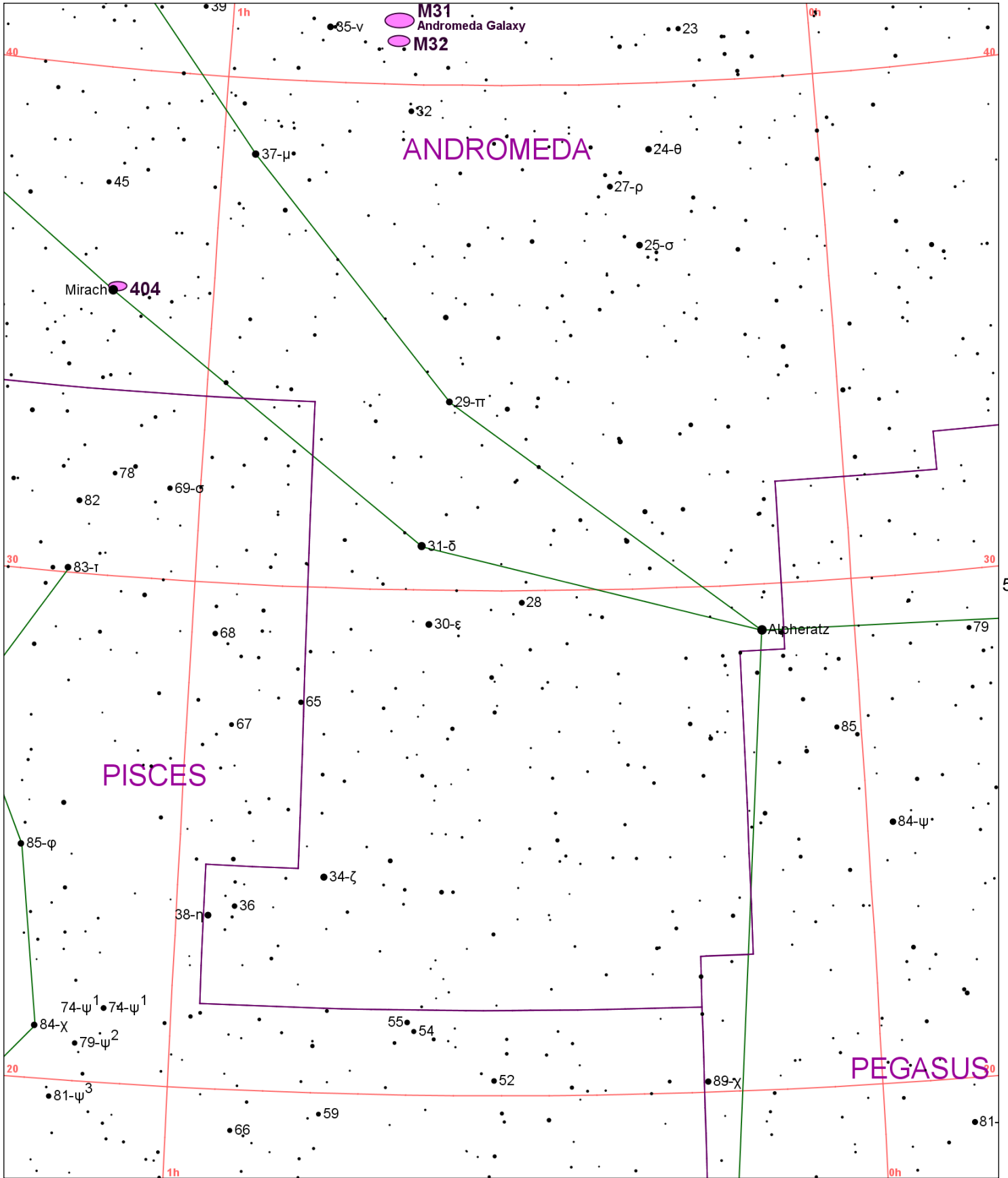


Chart 77													
Name	M	Const.	Mag.	Type	Size	R.A.	Decl.	C	R	S	O	# Stars	B
<b>Common</b>					<b>Notes</b>								
NGC 221	M32	AND	8.1	GAL	8.5m x 6.5m	0h 42.7m	40° 52.0'				O		B
					vvB,L,R,psmbMN - M31 Triplicate;Comp to M31								
NGC 224	M31	AND	3.4	GAL	189.1m x 61.7m	0h 42.7m	41° 16.0'				O		B
Andromeda Galaxy					!!!eeB,eL,vmE - Local Group;nearest spiral								
NGC 404		AND	10.3	GAL	4.3m x 3.9m	1h 09.4m	35° 43.0'				O		
					pB,cL,R,gbM - H II 224;UGC 718;Beta AND sf 6'								

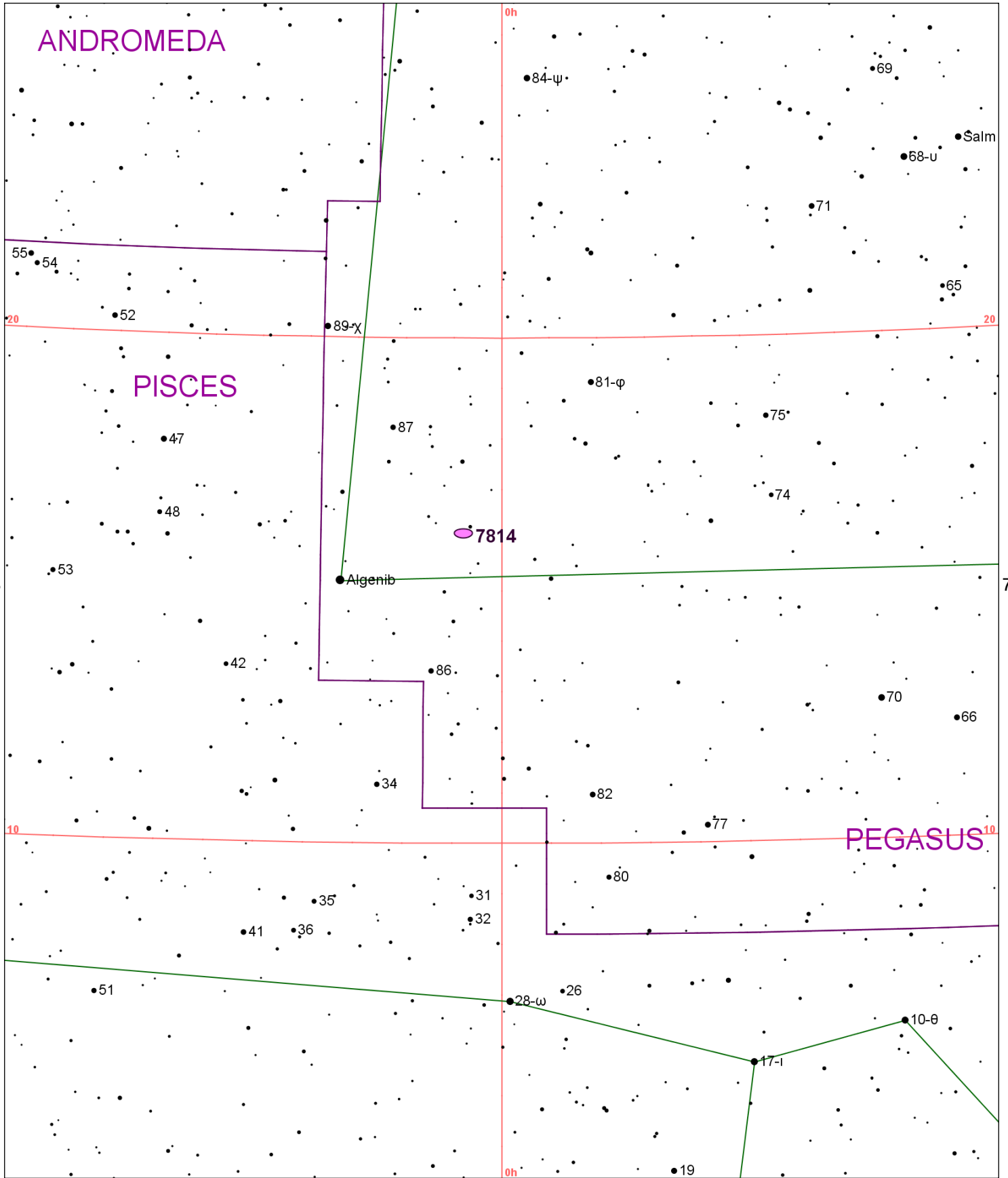


Chart 78													
Name	M	Const.	Mag.	Type	Size	R.A.	Decl.	C	R	S	O	# Stars	B
<b>Common</b>					<b>Notes</b>								
NGC 7814		PEG	10.6	GAL	4.7m x 2.4m	0h 03.2m	16° 09.0'	C43			O		
					cB,cL,E,vgbM - H II 240;Equatorial dust lane;Nearly edge-on								

54

55

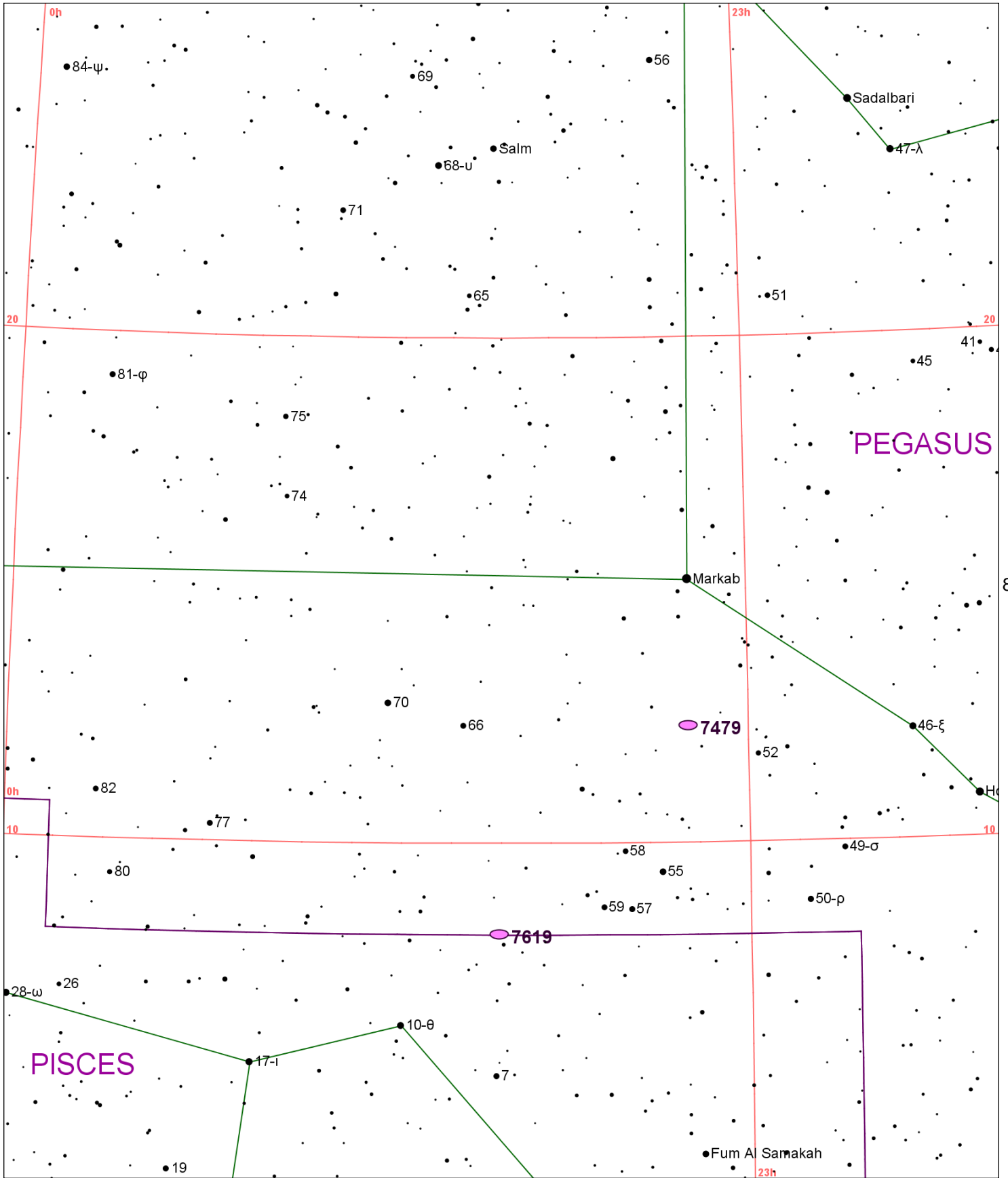


Chart 79													
Name	M	Const.	Mag.	Type	Size	R.A.	Decl.	C	R	S	O	# Stars	B
<b>Common</b>					<b>Notes</b>								
NGC 7479		PEG	10.9	GAL	4m x 3.1m	23h 04.9m	12° 19.0'	C44			O		
					pB,cL,mE12,bet 2 st - H I 55:excellent barred spiral								
NGC 7619		PEG	11.1	GAL	2.8m x 2.5m	23h 20.2m	8° 12.0'				O		
					cB,pS,R,psbM - H II 439;UGC 12523								

55

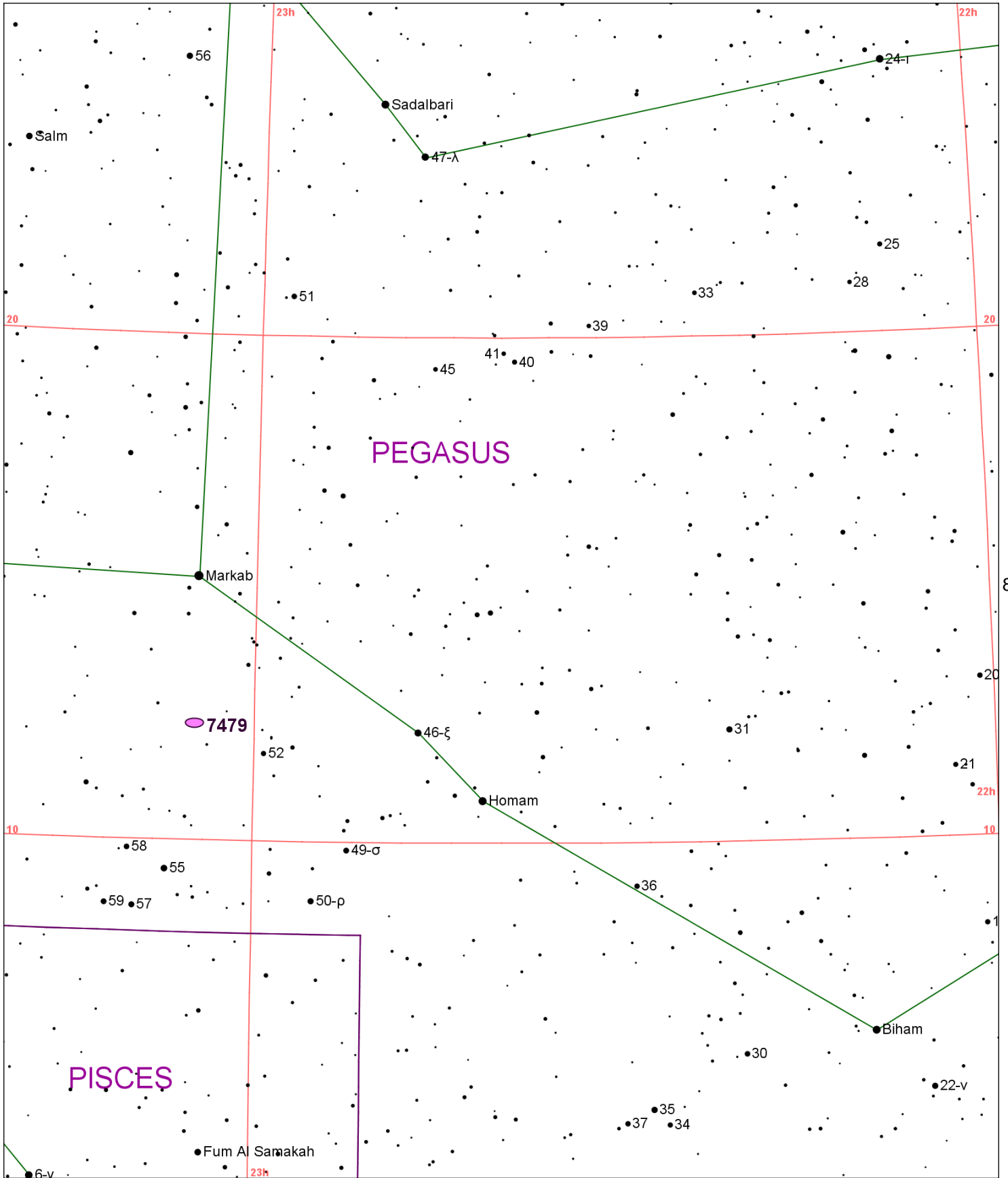


Chart 80													
Name	M	Const.	Mag.	Type	Size	R.A.	Decl.	C	R	S	O	# Stars	B
<b>Common</b>					<b>Notes</b>								
NGC 7479		PEG	10.9	GAL	4m x 3.1m	23h 04.9m	12° 19.0'	C44			O		
					pB,cL,mE12,bet 2 st - H I 55:excellent barred spiral								